

**CUSTOMER APPROVAL ENDORSEMENT**

APPROVED AS SHOWN

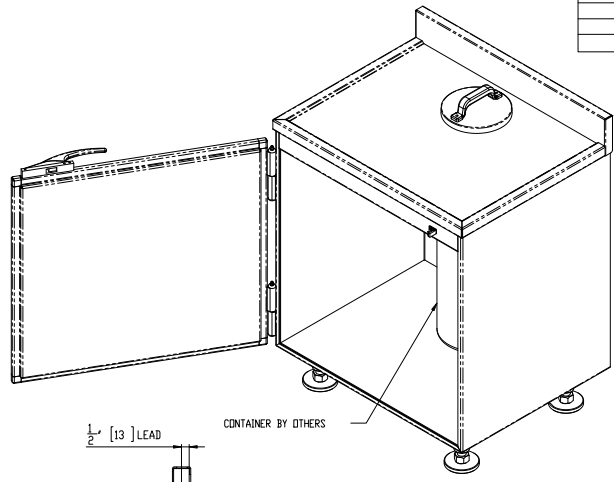
APPROVED WITH CHANGES SHOWN

BY: \_\_\_\_\_ DATE: \_\_\_\_\_

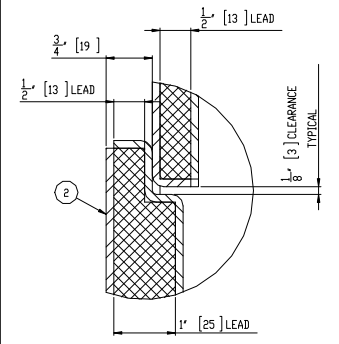
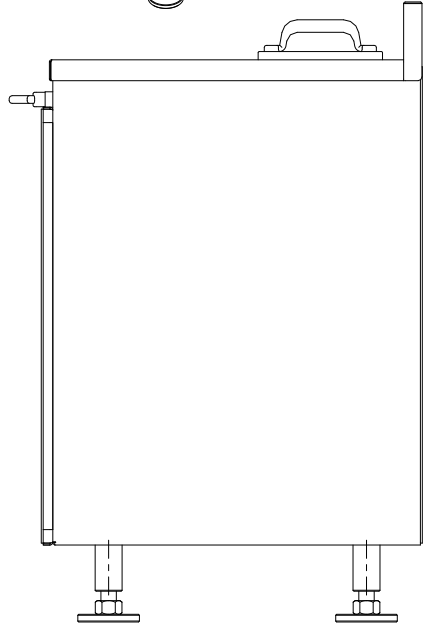
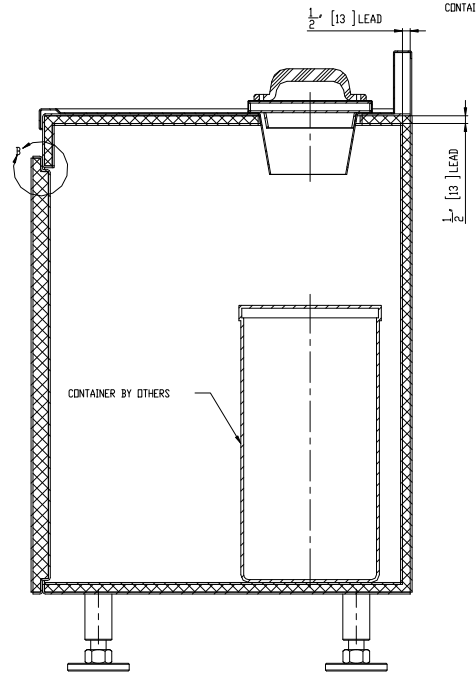
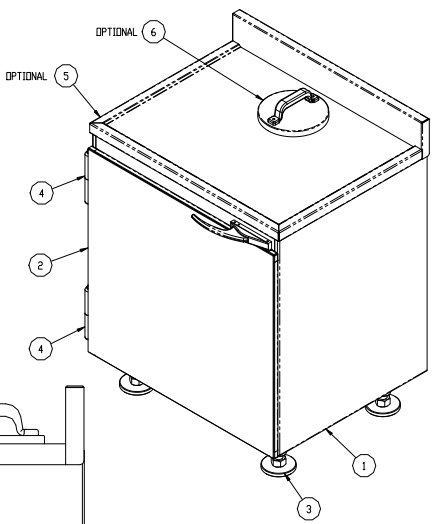
TITLE: \_\_\_\_\_

COMPANY: \_\_\_\_\_

COMMENTS: \_\_\_\_\_



| ITEM NO. | QTY | PART NUMBER     | DESCRIPTION                                |
|----------|-----|-----------------|--|
| 1        | 1   | MS-WC-0.5-01-00 | BODY                                       |
| 2        | 1   | MS-DC-0.5-02-00 | IDDR                                       |
| 3        | 4   | MS-DC-0.5-08-00 | LEG  |
| 4        | 2   |                 | 7" HINGE C/W GREASE NIPPLE                 |
| 5        | 1   | MS-10-05        | OPTIONAL CABINET TOP                       |
| 6        | 1   | -----           | OPTIONAL SHARPS HOLE C/W LEAD FILLED COVER |



DETAIL B  
SCALE 1 : 1

- NOTES:**
1. ALL UNITS ARE INCHES (MM) UNLESS OTHERWISE SPECIFIED
  2. ITEM 5 (CABINET TOP) IS OPTIONAL
  3. ITEM 6 ( SHARPS HOLE & COVER) IS OPTIONAL

| TOTAL LEAD WEIGHT   | TOTAL CABINET WEIGHT (INCLUDING LEAD) |
|---------------------|---------------------------------------|
| 1,085 LBS. (493 kg) | 1,465 LBS. (666 kg)                   |

| REV. | DESCRIPTION                             | DATE      | APPROVER |
|------|---|-----------|----------|
| B    | ADDED WEIGHTS TABLE                     | 2/27/2003 | N.S.B.   |
| A    | RELEASED FOR CUSTOMER REVIEW & APPROVAL | 1/27/2003 | N.S.B.   |

UNLESS OTHERWISE SPECIFIED

ALL DIMENSIONS ARE IN INCHES (MM) UNLESS OTHERWISE SPECIFIED

ALL DIMENSIONS ARE TO CENTER UNLESS OTHERWISE SPECIFIED

ALL DIMENSIONS ARE TO CENTER UNLESS OTHERWISE SPECIFIED

PROPERTY OF MARSHIELD

NO PART OF THIS DOCUMENT MAY BE REPRODUCED, STORED, OR TRANSMITTED IN ANY FORM OR BY ANY MEANS, WITHOUT THE WRITTEN PERMISSION OF Marshield, a Xerox Health Company

Division of Xerox Health Services, LLC

MS-WC-0.5-30.5-24-36.5

WASTE CABINET ASSEMBLY

SCALE 1 : 1

SHEET 1 OF 1