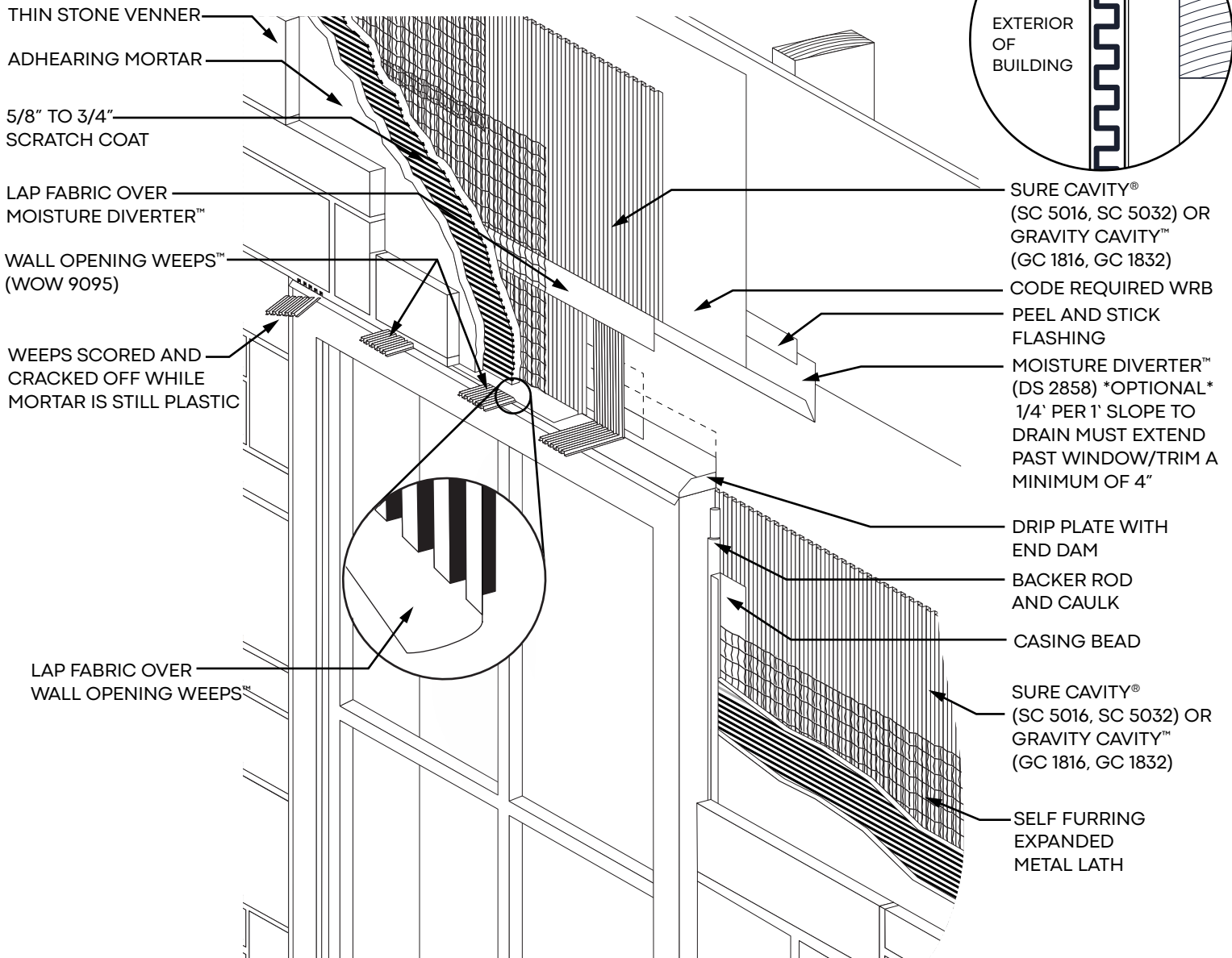




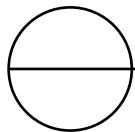
MASONRY TECHNOLOGY INC.
 24235 ELECTRIC ST, P.O. BOX 214
 CRESCO, IA 52136
 TOLL FREE: 1-800-879-3348
 PHONE: (563) 547-1122
 FAX: (563) 547-1133
 WWW.MTIDRY.COM



NOTES:

1. INSTALLATION TO BE COMPLETED IN ACCORDANCE WITH MANUFACTURER'S SPECIFICATIONS.
2. DO NOT SCALE DRAWINGS
3. CONTRACTORS NOTE: FOR PRODUCT AND COMPANY INFORMATION VISIT WWW.MTIDRY.COM

THIN STONE VENEER AT WINDOW HEAD WITH SURE CAVITY® OR GRAVITY CAVITY™



SURE CAVITY® (SC 5016, SC 5032) OR GRAVITY CAVITY™ (GC 1816, GC 1832) AND WALL OPENING WEEPS™ (WOW 9095) AND MOISTURE DIVERTER™ (DS 2858)

MTI CAD drawings are created from sources deemed to be reliable. However, MTI does not guarantee the accuracy or completeness of any information, nor shall be held responsible for any errors, omissions, or damages arising out of the use of this information. These drawings are created with the understanding that MTI is providing information but is not attempting to render engineering or other professional service. If such services are required, the assistance of an appropriate profession should be sought. Use MTI materials in strict conformance with local building codes and regulations. Consult local code/code officials prior to installation. It is the buyer's responsibility to ensure that MTI materials are used in strict conformance with local building codes and regulations.