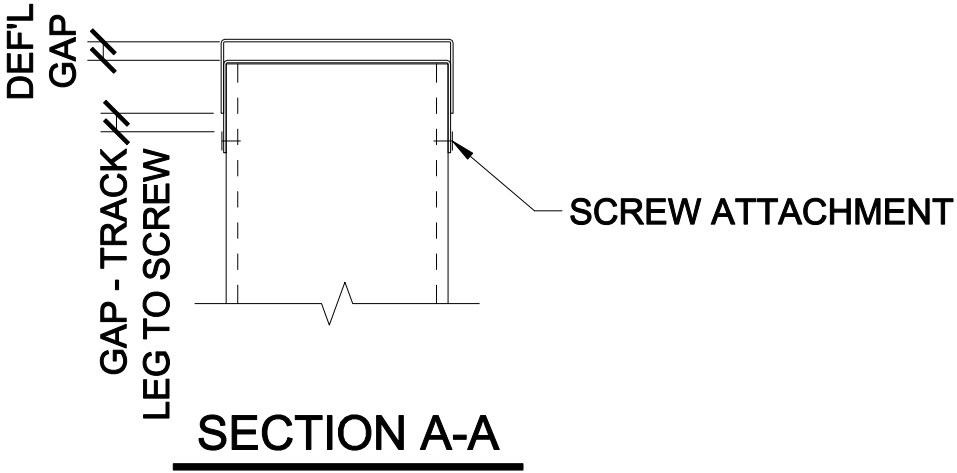


Deflection Track Assembly

Double Deflection Track



ADVANTAGES:

- 1. Provides lateral connection of the studs together without relying on cladding for lateral support parallel to the wall.
- 2. Allows both vertical and horizontal movement of the structure above which supports the deflection track.

DISADVANTAGES:

- 1. Difficult to build - usually requires temporary support of nested track to deflection track - Temporary support must be removed prior to installation of cladding.

