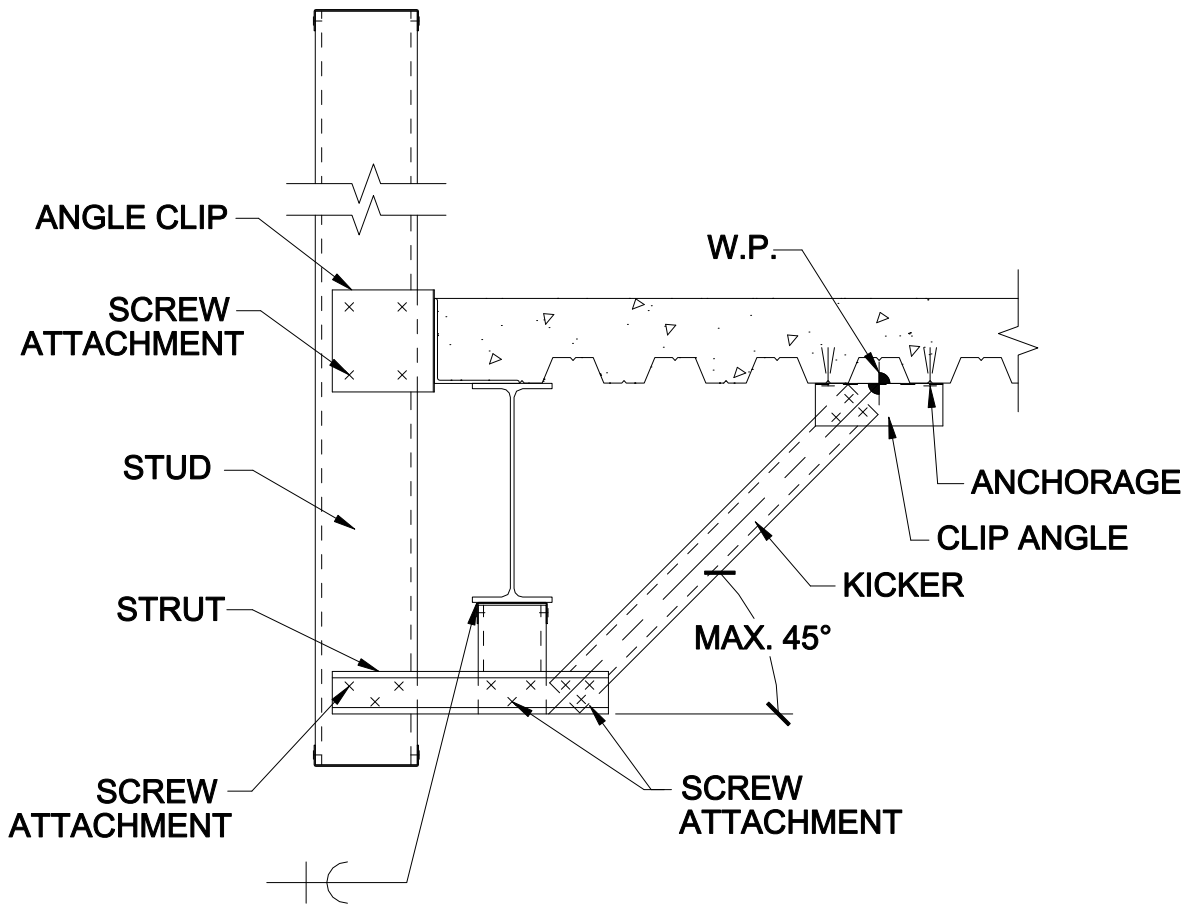


# Spandrel Curtain Wall Sticker with Vertical Drop And Diagonal Brace



## ADVANTAGES:

1. Increases spacing between support points which reduces support reactions and decreases deflections.
2. Transfers vertical load from the brace into bottom of beam rather than the wall.
3. Allows support at floor/roof to be sized to take lateral and dead loads from wall only, rather than the brace.

## DISADVANTAGES:

1. Costly to install.