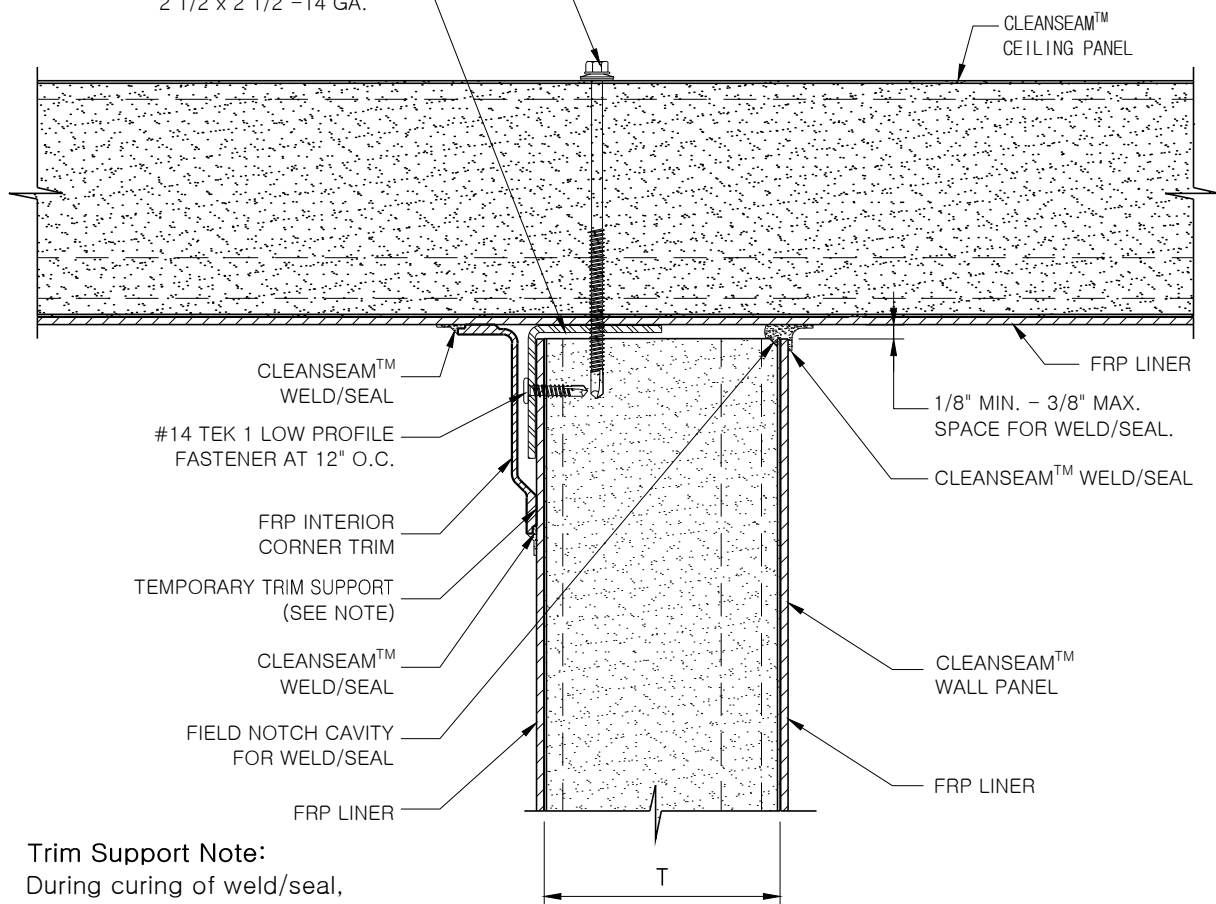


CEILING PANEL FASTENER SPACING NOTES:

1. CEILING PANELS PARALLEL TO WALL FASTENERS AT 24" O.C.
2. CEILING PANELS PERPENDICULAR TO WALL FASTENERS AT 6" EACH SIDE OF PANEL JOINT.

1/4-14 HWH TYPE 3 SELF DRILLING FASTENER WITH SEALING WASHER (SEE NOTE FOR FASTENER SPACING.)
 NOTE: MARK LOCATION OF 14 GAUGE ANGLE ON THE CEILING PANEL AS THEY ARE BEING INSTALLED.

WALL/CEILING ANGLE WITH FACTORY HOLES
 2 1/2"x 2 1/2"-14 GA.



Trim Support Note:
 During curing of weld/seal, trim may be supported by contact adhesive tape or rivets. Exposed rivet heads covered with weld/seal.

T = PANEL THICKNESS
 3" OR 4"

**APPLICATION:
 PROCESSING**

**CLEANSEAM™
 PARTITION TO CEILING DETAIL**

CSM-CG-07

DATE: Nov. 9, 2016