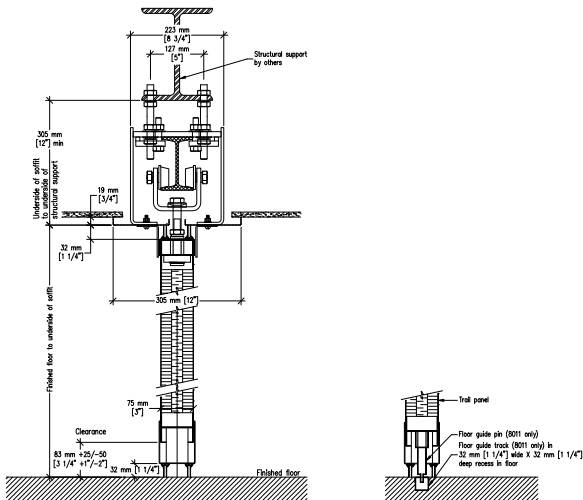


# Excel 700

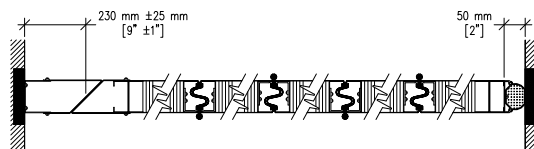
## MODELS: 733-EG CONTINUOUSLY-HINGED ELECTRICALLY OPERATED PARTITION



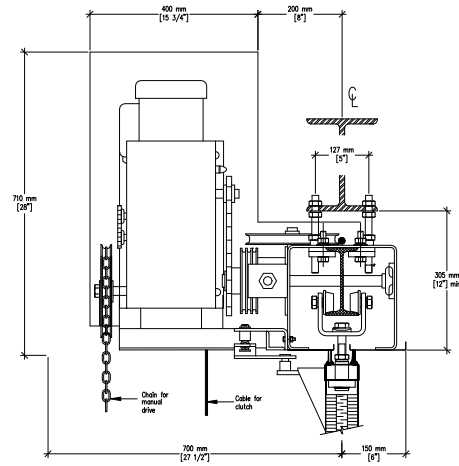
#80 steel track



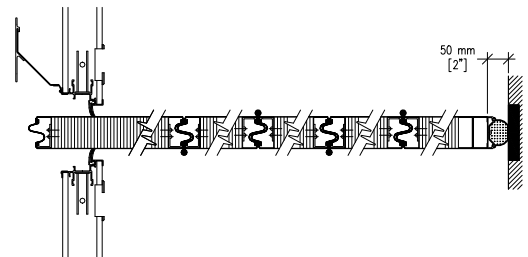
Top & Bottom fixed sweeps  
Adjustable bottom seal retainer



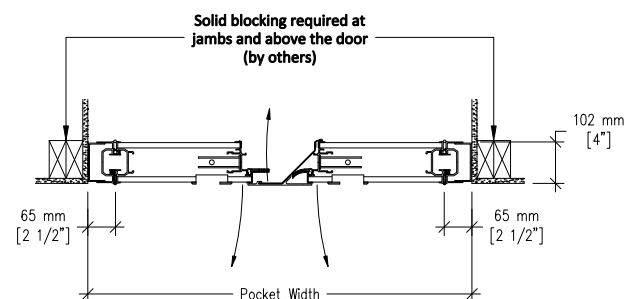
Fixed wall jamb & Bulb seal  
(Wall to wall application)



Vertical Section at Drive Unit



Pocket door & Bulb seal  
(Wall to pocket application)



3-Section Pocket Door  
(optional in Wall to wall application)