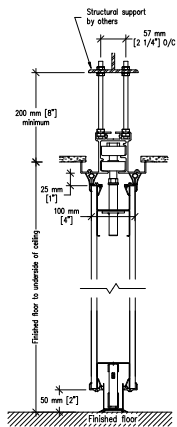
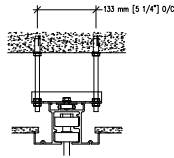


## #23-T aluminum track

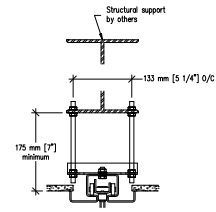


## Optional Hanger Bracket



required when top nuts do not allow adjustment

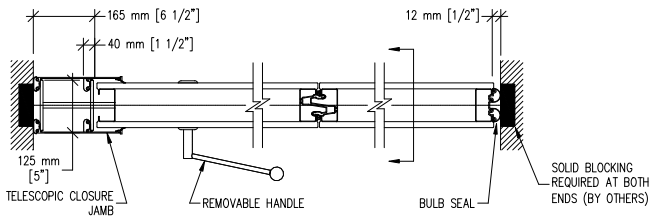
## Optional #72 steel track



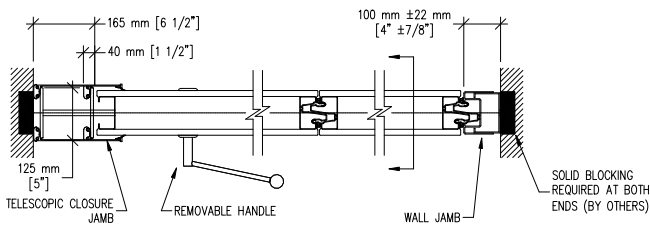
## Top fixed & Bottom automatic seals

## Trimless Edges

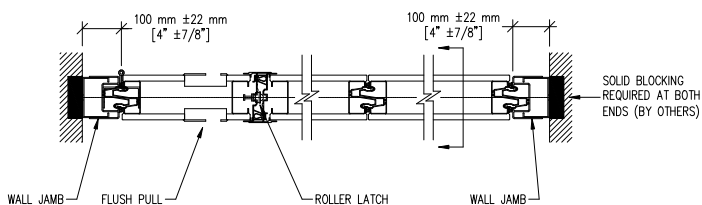
## Protective Trims



## Telescopic closure & Bulb seal



## Telescopic closure & Fixed wall jamb



## Hinged closure panel & Fixed wall jamb (Available on panels under 3730 mm [12'-3"])