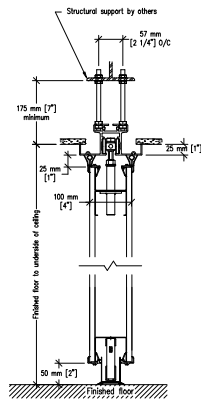
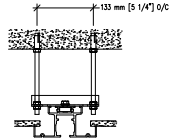


## #45-T aluminum track

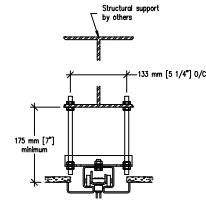


## Optional Hanger Bracket



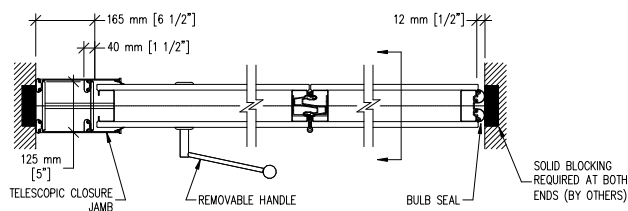
required when top nuts do not  
allow adjustment

## Optional #72 steel track



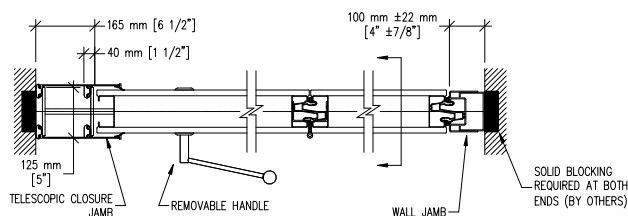
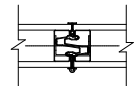
## Top fixed & Bottom automatic seals

### Trimless Edges

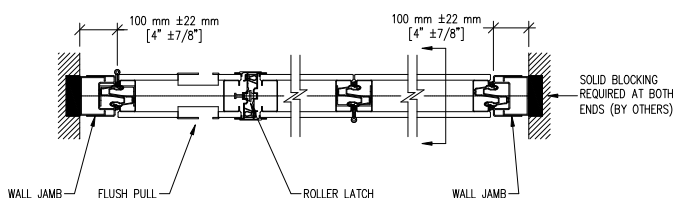


### Telescopic closure & Bulb seal

### Protective Trims



### Telescopic closure & Fixed wall jamb



### Hinged closure panel & Fixed wall jamb (Available on panels under 3730 mm [12'-3\"])