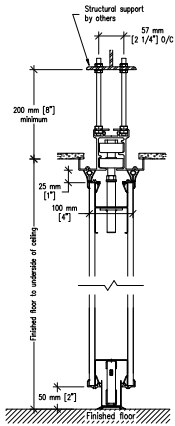
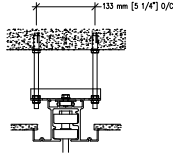


#23-T aluminum track

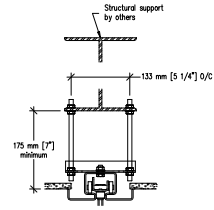


Optional Hanger Bracket



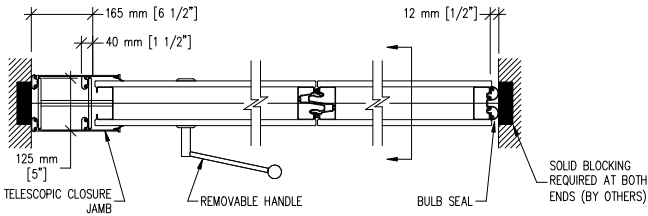
required when top nuts do not allow adjustment

Optional #72 steel track



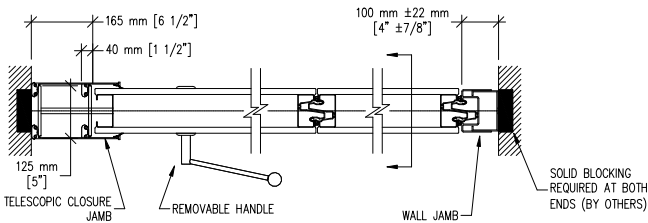
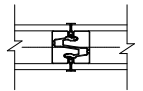
Top fixed & Bottom automatic seals

Trimless Edges

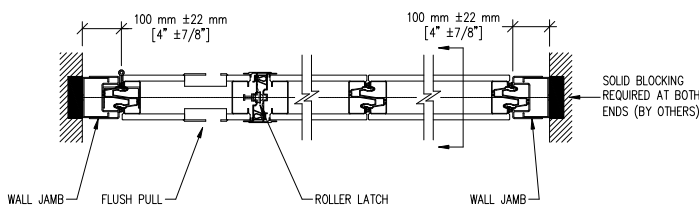


Telescopic closure & Bulb seal

Protective Trims



Telescopic closure & Fixed wall jamb



Hinged closure panel & Fixed wall jamb  
(Available on panels under 3730 mm [12'-3\"])