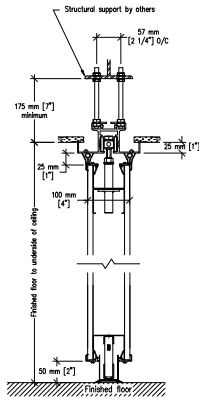
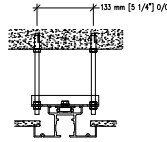


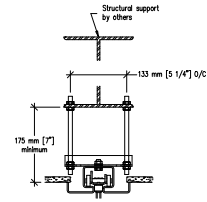
#45-T aluminum track



Optional Hanger Bracket



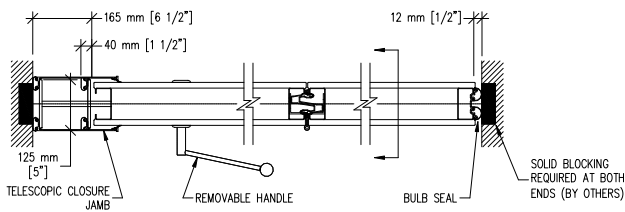
Optional #72 steel track



required when top nuts do not allow adjustment

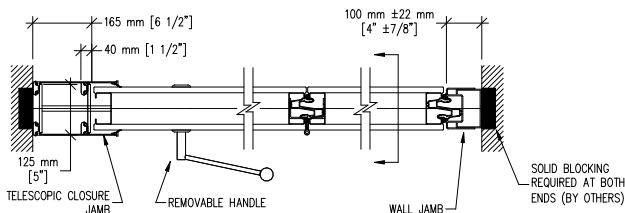
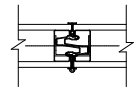
Top fixed & Bottom automatic seals

Trimless Edges

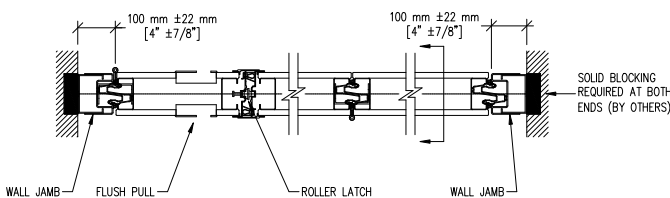


Telescopic closure & Bulb seal

Protective Trims



Telescopic closure & Fixed wall jamb



Hinged closure panel & Fixed wall jamb
(Available on panels under 3730 mm [12'-3"])