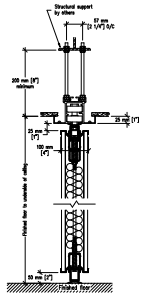
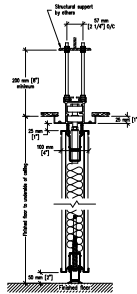


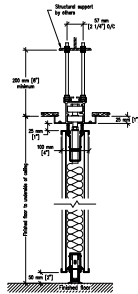
#23-T aluminum track for panels under 4648 mm [15'-3"]



Top & Bottom mechanical seals

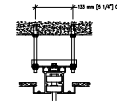


Top fixed & Bottom mechanical seals



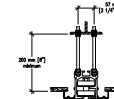
Top fixed & Bottom automatic seals

Optional Hanger Bracket

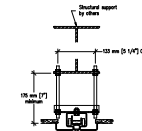


required when top nuts do not allow adjustment

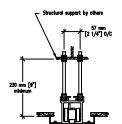
#33-T aluminum track for panels 4648 mm [15'-3"] up to 6781 mm [22'-3"]



Optional #72 steel track for panels up to 4648 mm [15'-3"] (switch & curve)

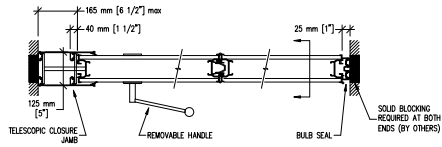


#55-T aluminum track for panels 6781 mm [22'-3"] up to 9220 mm [30'-3"] (switch & curve)

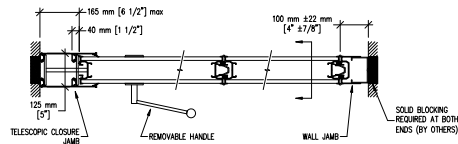
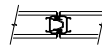


Protective Trims

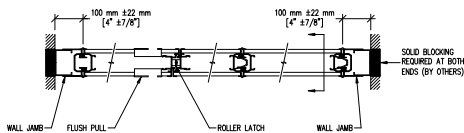
Trimless Edges



Telescopic closure & Bulb seal



Telescopic closure & Fixed wall jamb



Hinged closure panel & Fixed wall jamb
(Available on panels under 3730 mm [12'-3"])