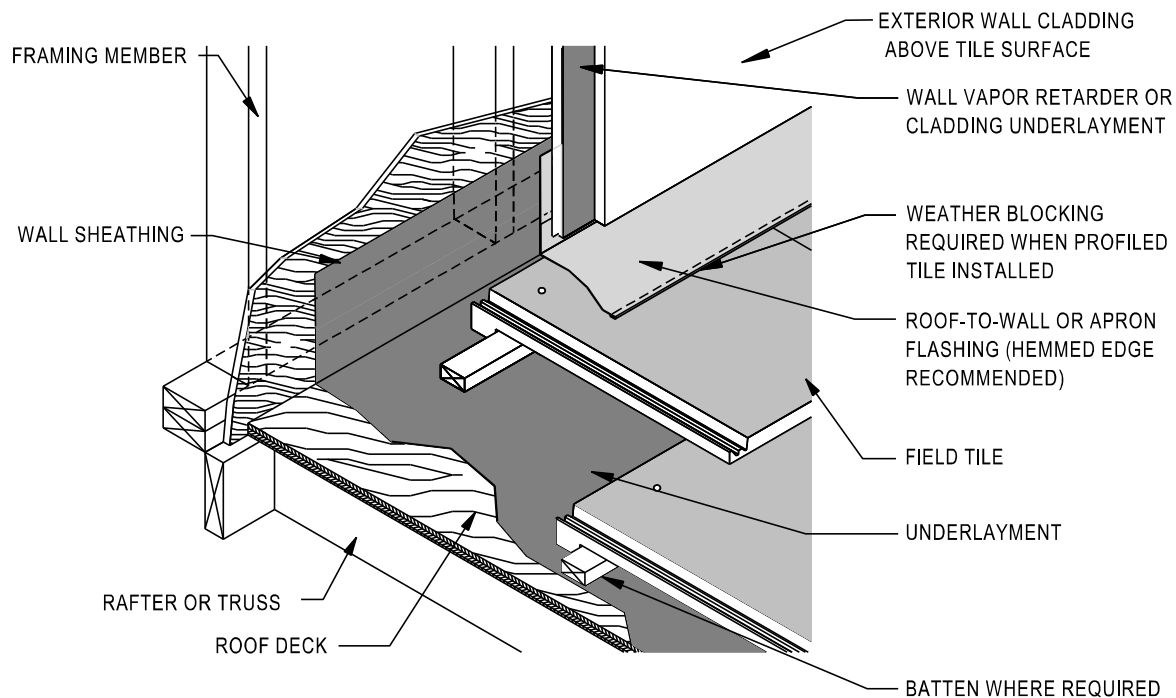


HEAD WALL FLASHING WITHOUT COUNTERFLASHING

MC-11A



Note:

Openings at hips, ridges and head walls including chimneys, skylights, solar panels, and downslope horizontal abutments shall be fitted with weather blocking material to keep water on the surface of the field tile. Other methods approved by local building official will be allowed. See Technical Bulletin at www.tilerroofing.org

Notes:

1. For recommended underlayment and fastening requirement, see Table 1A and 1B.
2. Underlayment shall extend a minimum of 4" up vertical wood blocking or wall, and is suggested to extend above wall flashing.
3. Apron flashing or other roof-to-wall closure material is necessary at roof-to-wall intersections. Roof-to-wall/apron flashing should extend a minimum of 2", with 4" preferred up vertical walls, and provide a minimum of 3" overlap/headlap onto tile. The apron flashing is required to be overlapped a minimum of 2" by sheet metal counterflashing or wall cladding.
4. Dimensions shown are minimum and are intended to be approximate to allow for reasonable tolerances due to field conditions.
5. The bottom edge of the counterflashing height settings shall be set above the roof deck a minimum of 4" for flat tile, 5" for low profile tile, and 6" for high profile tile.
6. All roof flashing shall be a minimum of (No. 26 galvanized sheet gaUge) not less than 0.019 inch corrosion-resistant metal (G90). See Table A for additional options.

