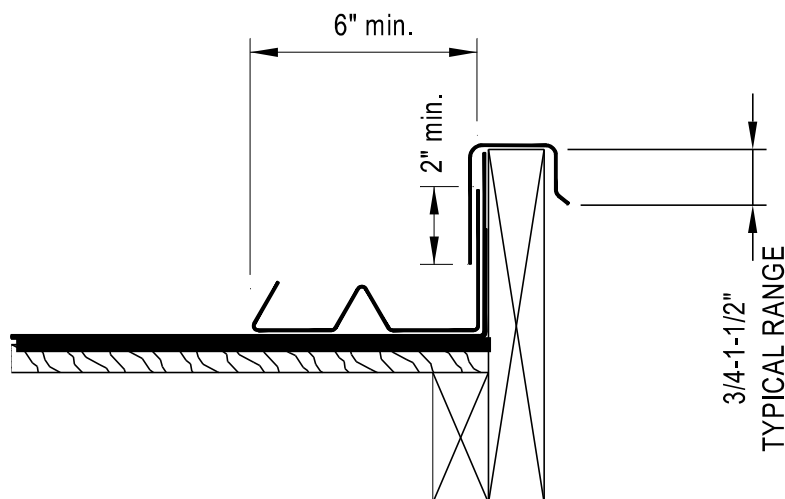


RAKE FLASHING - EXAMPLES

MC-19A

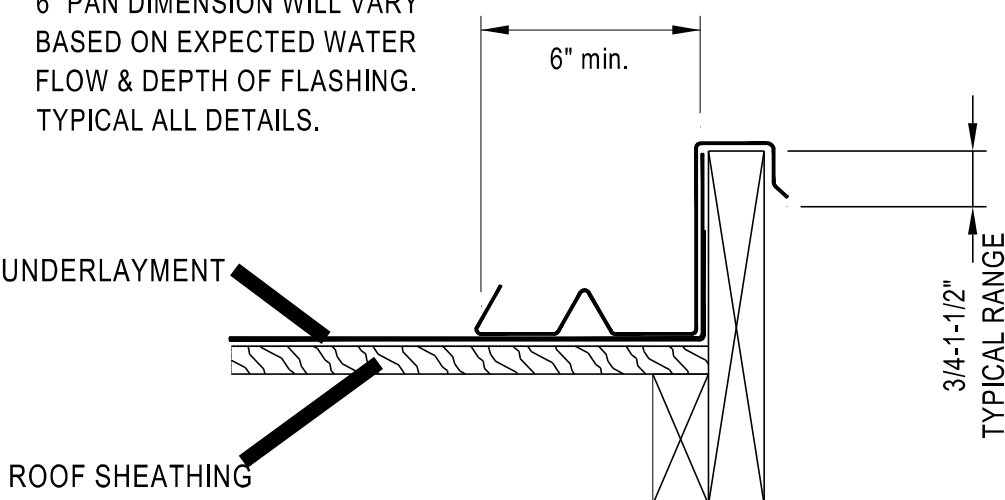
SEE DRAWING MC-12B FOR ADDITIONAL FLASHING INFORMATION



2 PIECE METAL PAN FLASHING
WITH DRIP EDGE

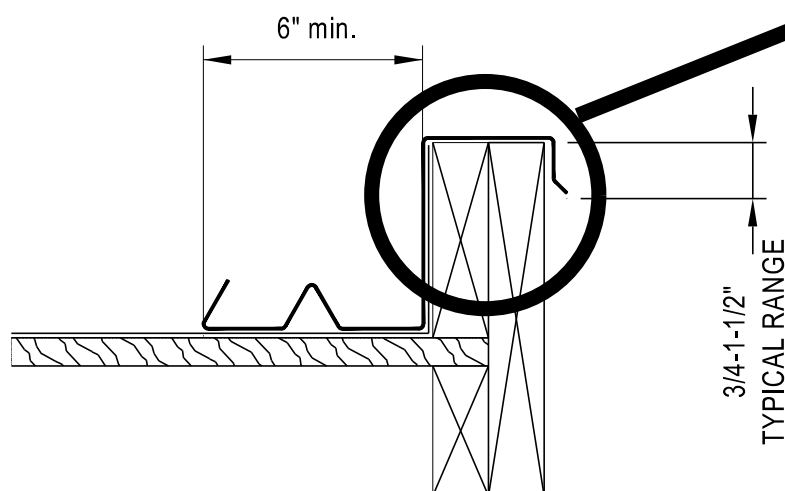
NOTE:

6" PAN DIMENSION WILL VARY
BASED ON EXPECTED WATER
FLOW & DEPTH OF FLASHING.
TYPICAL ALL DETAILS.



ONE-PIECE METAL PAN
FLASHING WITH DRIP EDGE

UNDERLAYMENT
ROOF SHEATHING



OPTIONAL CLEAT DRIP EDGE

ENGAGE CLEAT 3/4" MINIMUM

METAL PAN FLASHING WITH
DRIP EDGE

Notes:

1. Flashing details may vary according to local weather conditions, roof size, location, slope of roof and contributory run-off area.
2. Underlayment will extend a minimum of 4" up vertical wood blocking, wall, or to the top of fascia or gable trim.
3. Sheet metal flashing should be a minimum of (No. 26 galvanized sheet gauge) not less than 0.019 inch corrosion-resistant metal (G90). See Table A for additional options.
4. Dimensions shown are minimums and are intended to be approximate to allow for reasonable tolerances due to field conditions, and area practices.
5. Rake flashing and wood nailer/trim board will be raised above the roof deck to a height greater than the height of the installed roof tile.

