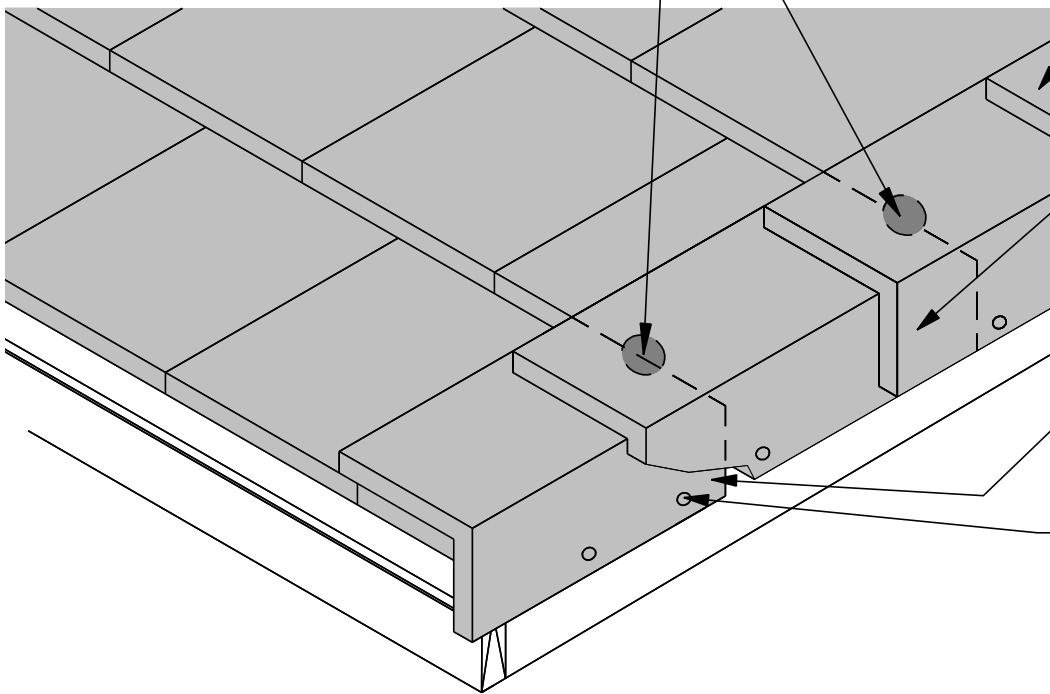


FOR ADDITIONAL FASTENING IN REGIONS SUBJECT TO HIGH WINDS OR SNOW ACCUMULATION, A MINIMUM 1" DAB OF CODE APPROVED ADHESIVE IS RECOMMENDED AT OVERLAP

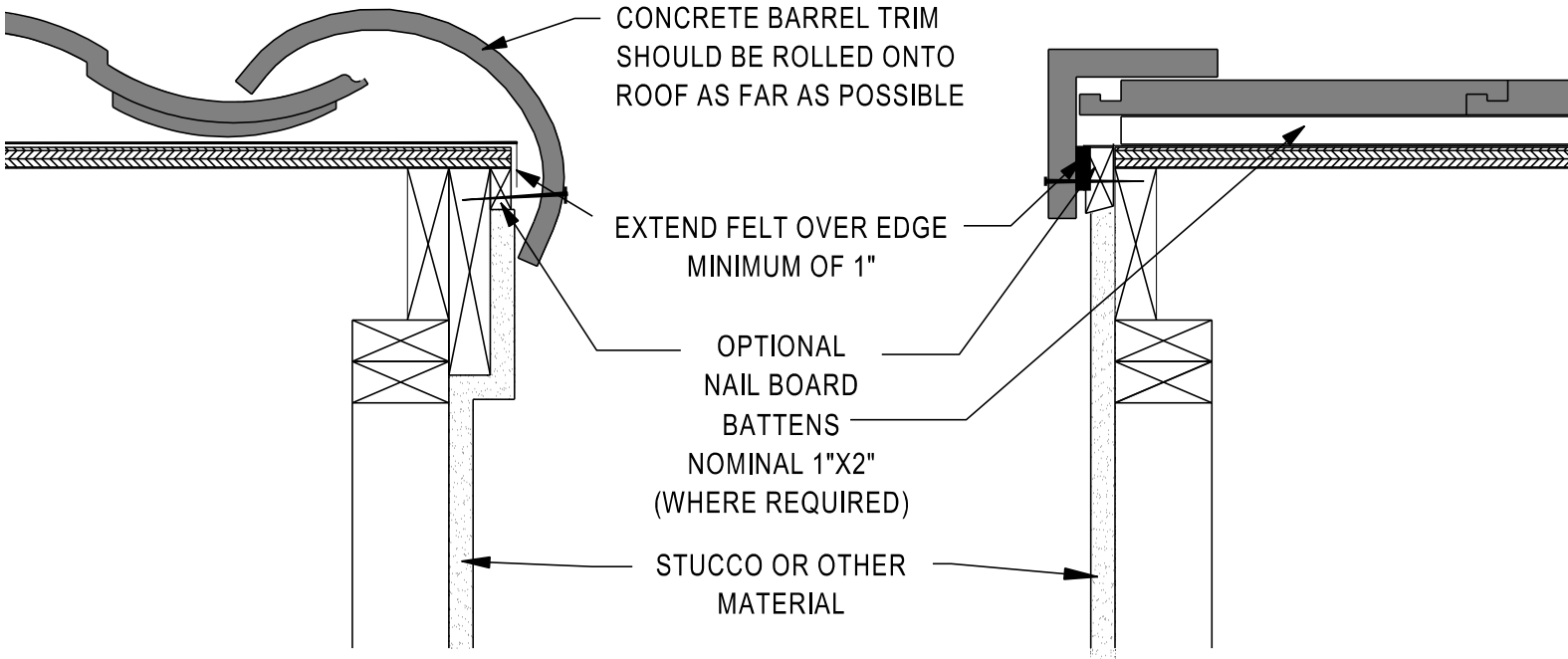


FACTORY-FINISHED BUTT END EXPOSED; PLACE THICK END UPSLOPE TOWARD RIDGE

BUTT RAKE TILES TO COURSE ABOVE

CUT OFF HEAD END OF FIRST RAKE TILES SO FACTORY-FINISHED BUTT END IS FLUSH WITH EAVE COURSE TILES

TWO CORROSION-RESISTANT FASTENERS, PER RAKE TILE, OF SUFFICIENT LENGTH TO PENETRATE THE 2x NAILER OR BARGE BOARD A MINIMUM OF 3/4". HEAD OF FASTENERS SHALL BE LARGER THAN HOLE IN TRIM TILES.



CONCRETE BARREL TRIM SHOULD BE ROLLED ONTO ROOF AS FAR AS POSSIBLE

EXTEND FELT OVER EDGE MINIMUM OF 1"

OPTIONAL NAIL BOARD BATTENS NOMINAL 1"x2" (WHERE REQUIRED)

STUCCO OR OTHER MATERIAL

Notes:

1. Dimensions shown are minimums and are intended to be approximate to allow for reasonable tolerances due to field conditions, and area practices.
2. Rake tiles must be fastened into a minimum nominal 2" gable facia or equivalent in dimension.
3. The fasteners must penetrate a minimum of 3/4" into dimensional wood lumber.
4. See Table 1A for additional fastening instructions.

