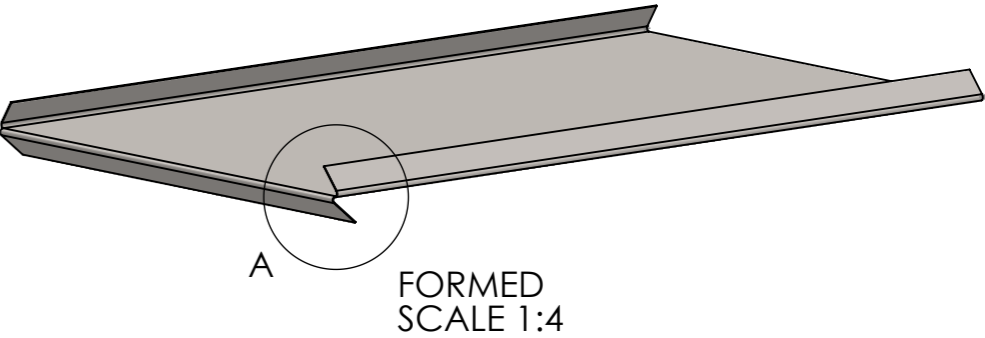
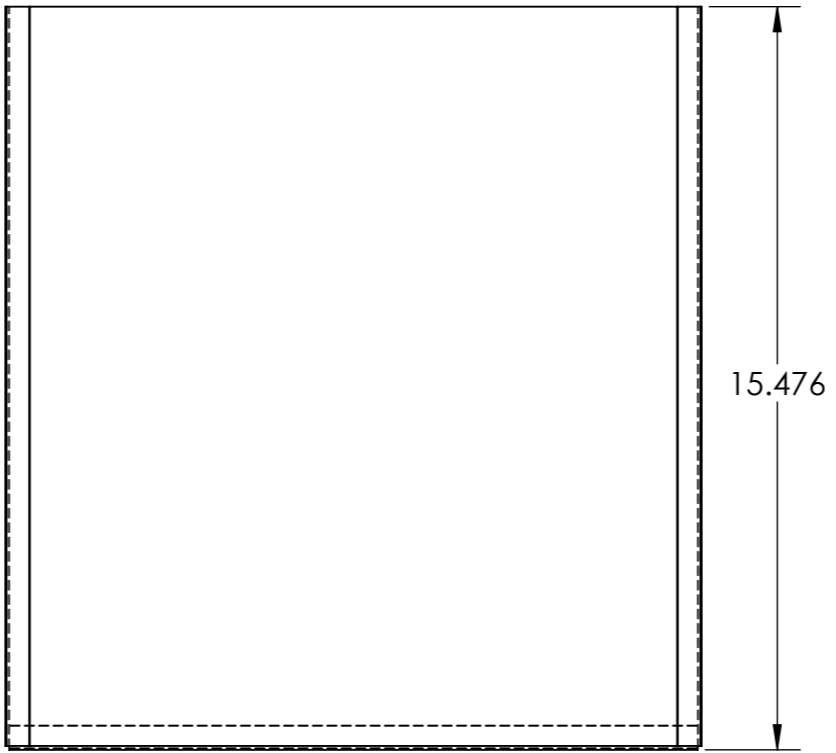
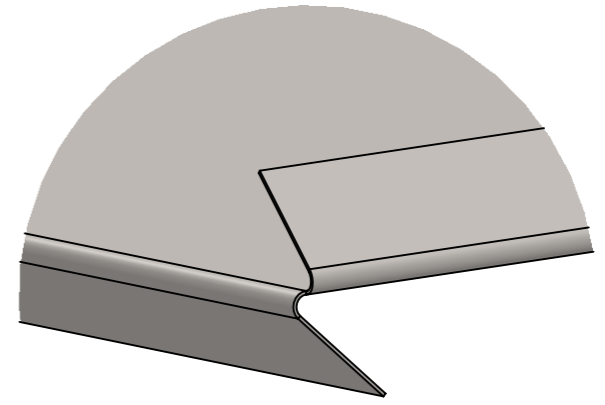


SAP#	Description	Surface A	Surface B
92532	Pipe Jack Tray	Bare	Bare

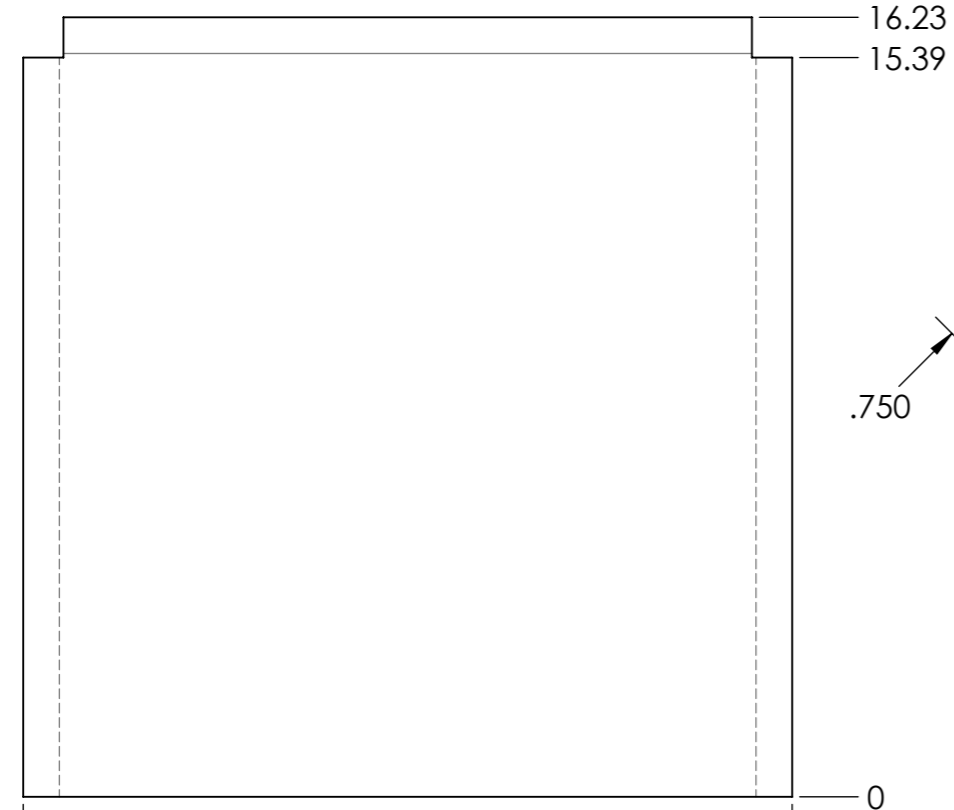
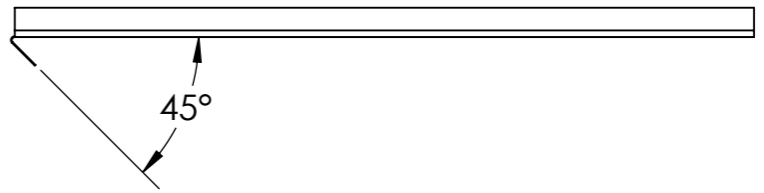
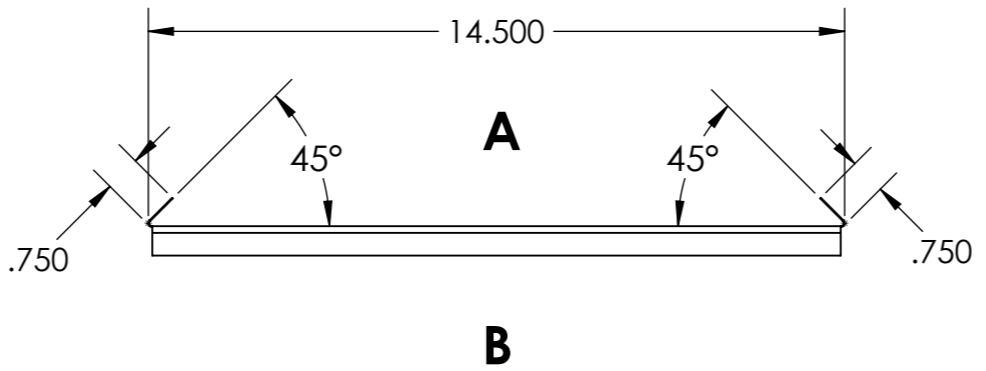
SURFACE COATING SPEC.	
Description	
BARE (See material description)	
STONE COATED	
PAINTED (COLOR)	
a) 0.7 mil - 0.8 mil POLYESTER	
PRIMER	
a) 0.2 mil - 0.4 mil POLYESTER	



FORMED SCALE 1:4




DETAIL A SCALE 1:1



FLAT OUT SCALE 1:4

NOTE: MATERIAL SIZE, FLAT STOCK: W X L= 16" X 16.23"

REFERENCE:
APPROX WEIGHT: 1.38 lb

REVISIONS					MATERIAL: 0.0170"± 0.0005" THICKNESS, G90 GALVANIZED OR AZ50 GALVALUME	UNLESS OTHERWISE SPECIFIED TOLERANCES ARE: TOLERANCES: ±0.0625" ANGULAR: ±3°	SAP# 92532		
ZONE	REV.	DESCRIPTION	DATE	CHANGED BY			TITLE	UNIT: INCH	
COPYRIGHT © 2010 BORAL ROOFING						DRAWN I. Haniff CHECKED S. Barry APPROVED C. Falatoon ASSY. DRAWING	DATE 5/15/2018 DATE 1/2/2019 DATE 09/20/2019	SHEET 1 OF 1 DRAWING NUMBER PT-0629	REV A SIZE A3
<small>This drawing is the property of BORAL ROOFING and is subject to return upon demand. It is submitted for the confidential use of the borrower and only in connection with proposals or contracts of this organization upon the expressed condition that it is not to be reproduced, copied, lent or otherwise disposed of directly or used directly or indirectly in any way detrimental to BORAL ROOFING and its subsidiaries.</small>						SCALE 1:4 UNLESS NOTED			