

Metal Wall & Roof Systems
North America



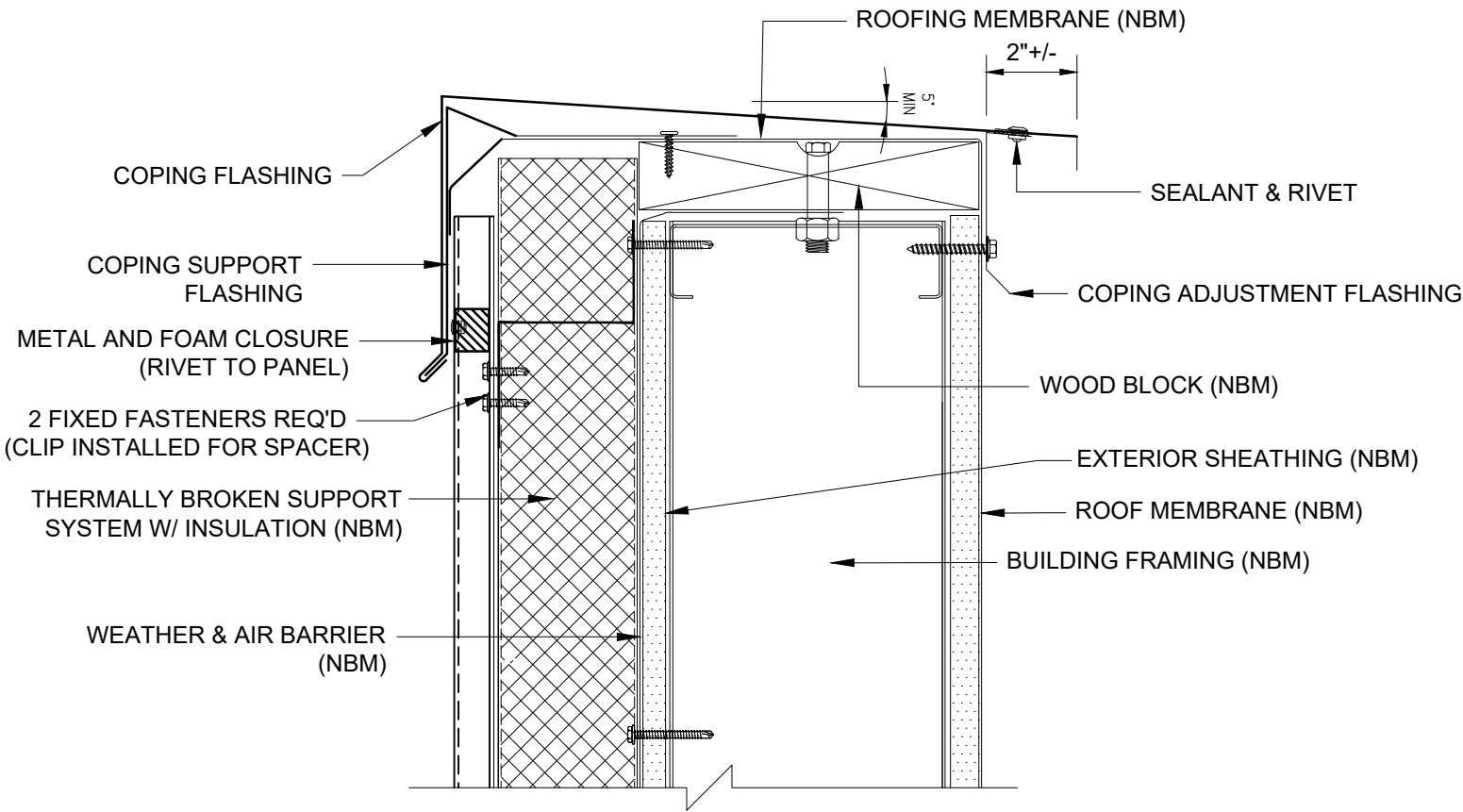
Morin Integrity Series Metal Wall System Installation Details

Innovative Single Element Building Envelope Solution



Morin[®]
By Kingspan

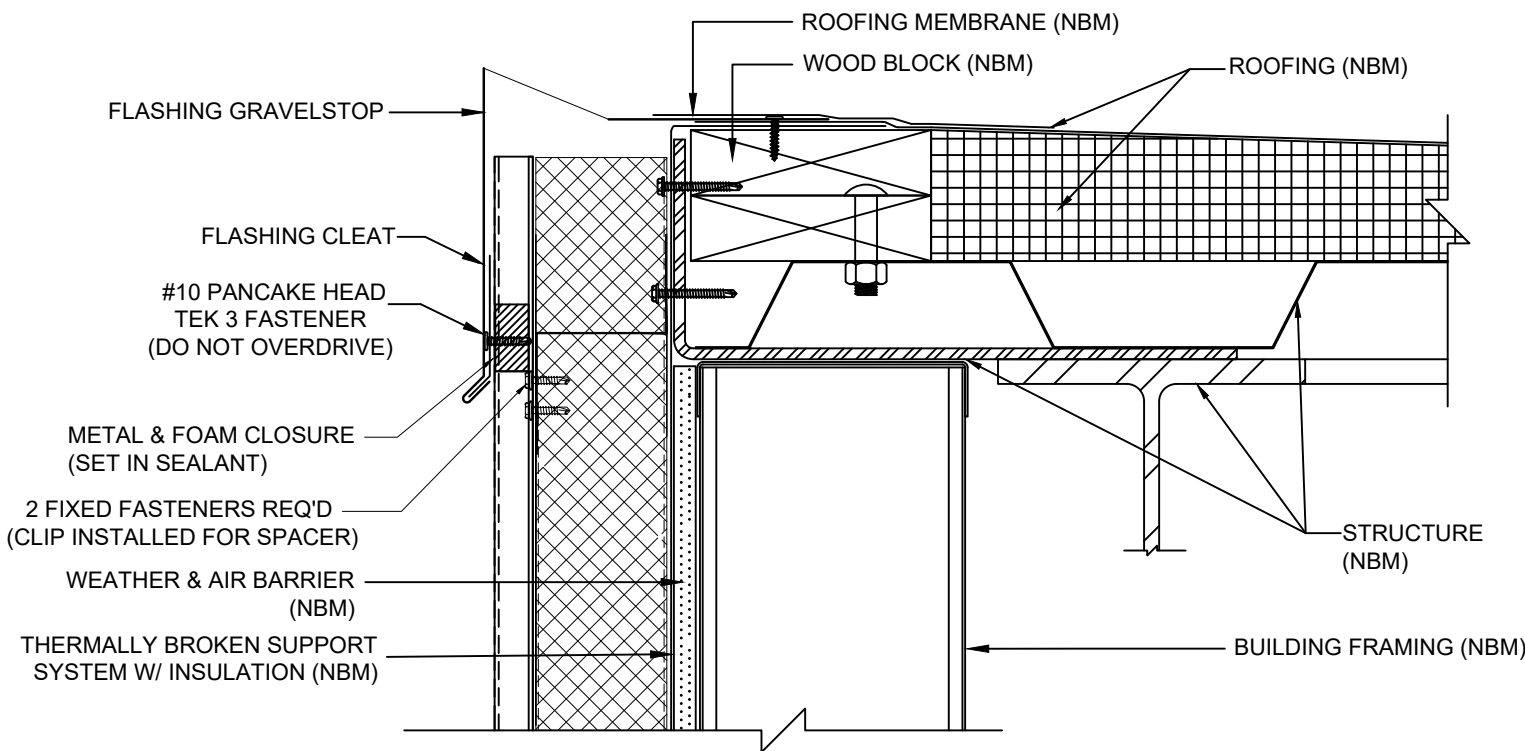
Vertical Installation



COPING DETAIL

*NBM=(NOT BY MORIN)

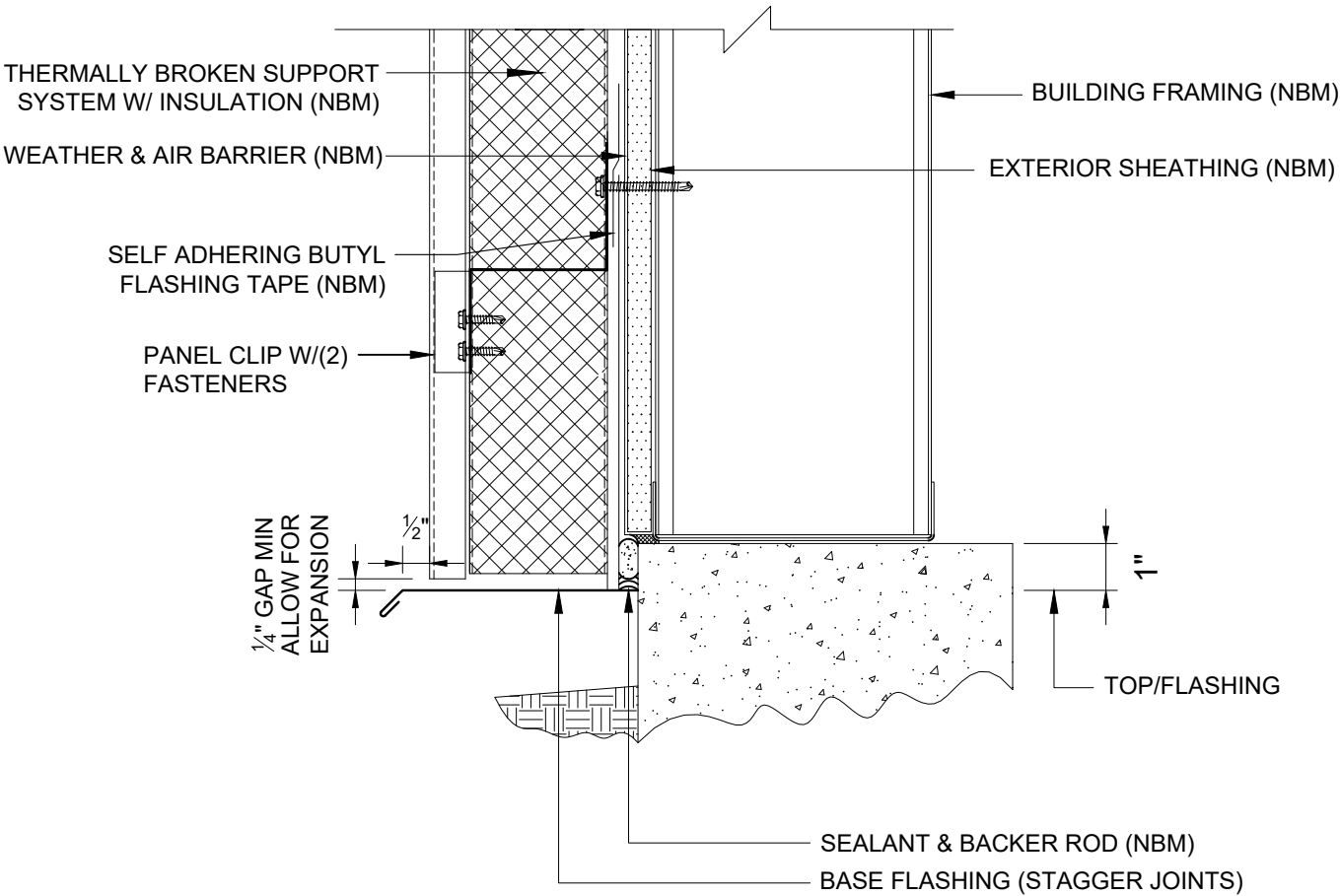
Vertical Installation



GRAVELSTOP DETAIL

*NBM=(NOT BY MORIN)

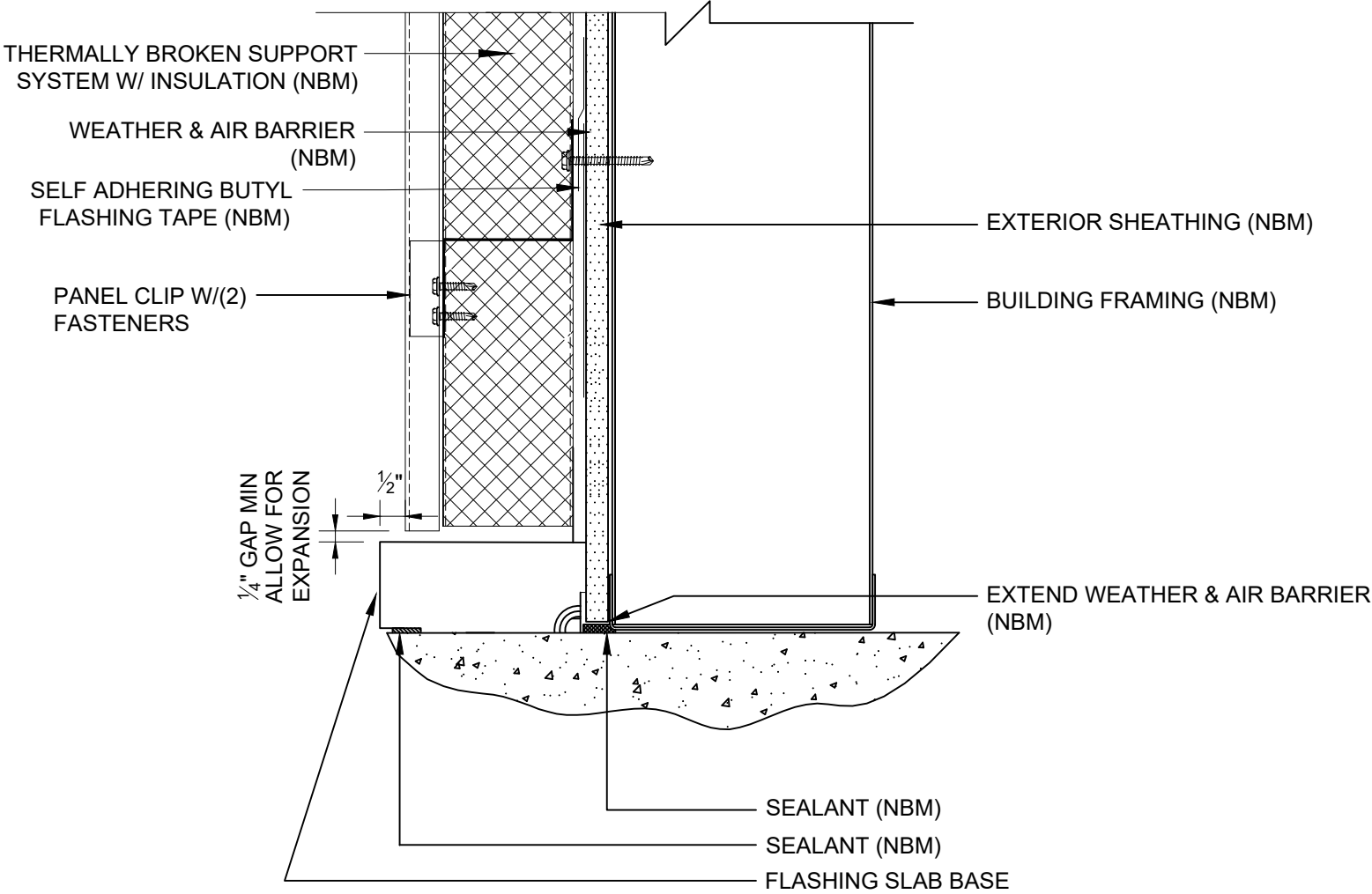
Vertical Installation



BASE AT CURB OR EDGE OF SLAB DETAIL

*NBM=(NOT BY MORIN)

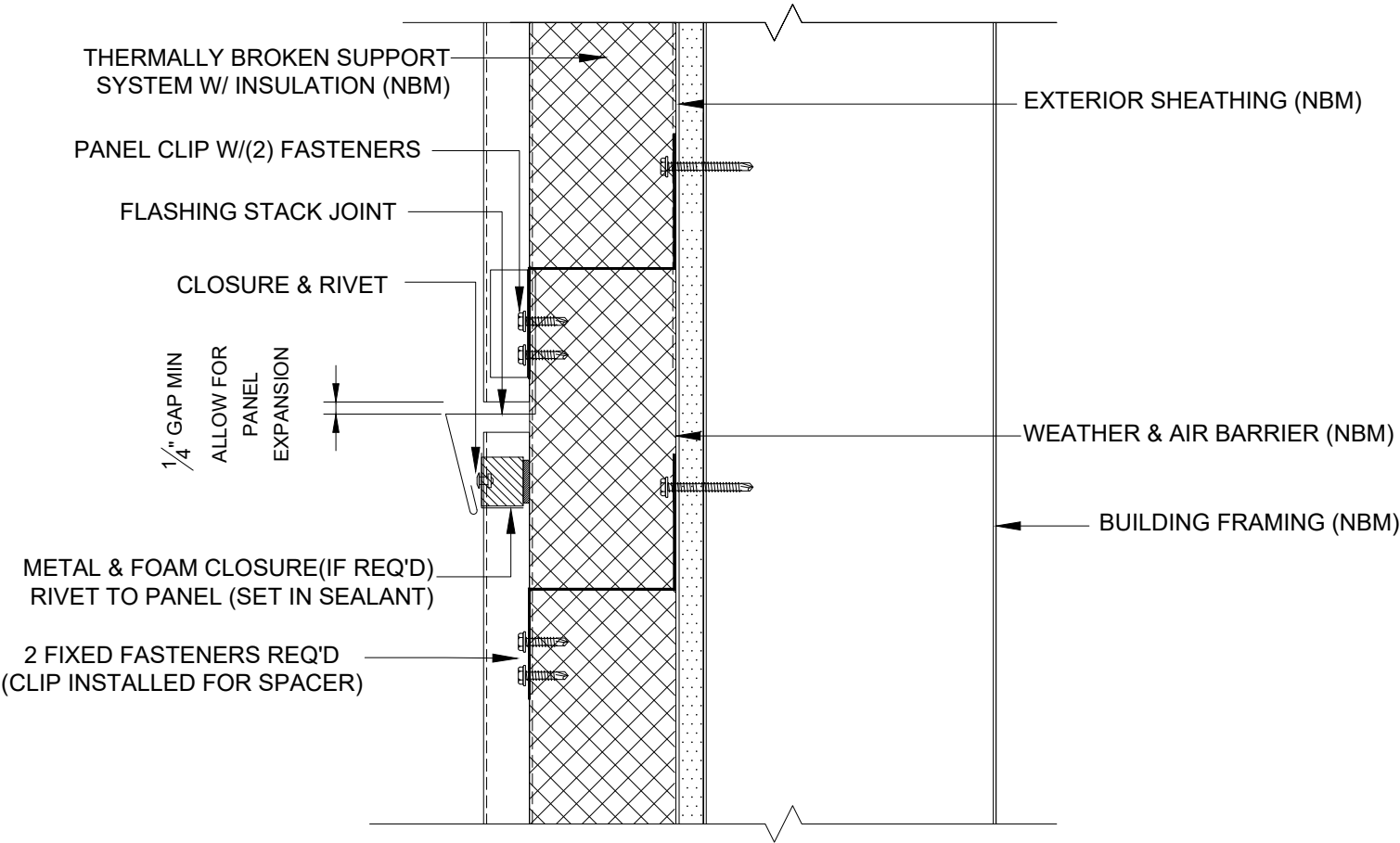
Vertical Installation



BASE AT SLAB DETAIL

*NBM=(NOT BY MORIN)

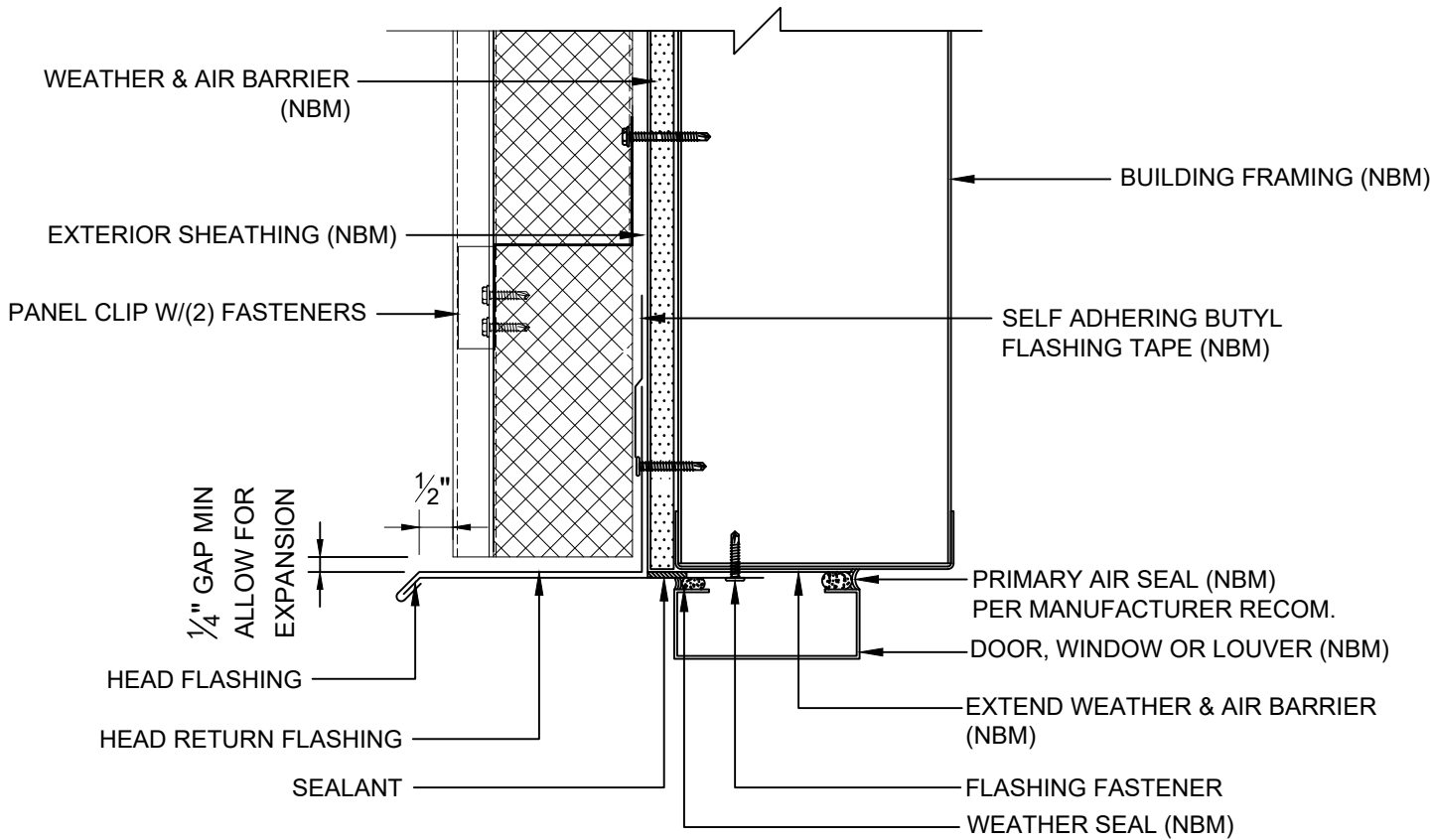
Vertical Installation



STACK JOINT DETAIL

*NBM=(NOT BY MORIN)

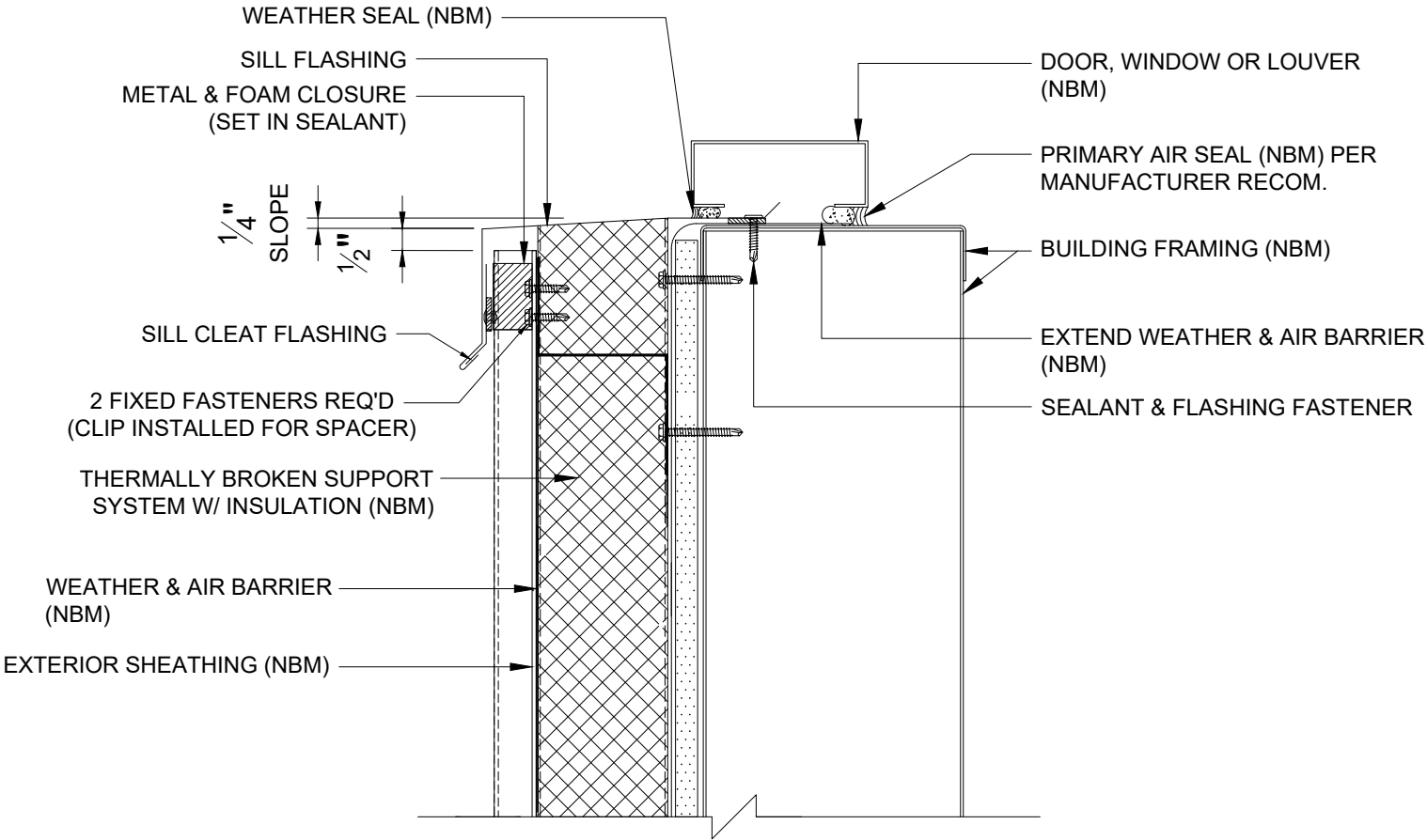
Vertical Installation



DOOR/WINDOW/LOUVER HEAD DETAIL

*NBM=(NOT BY MORIN)

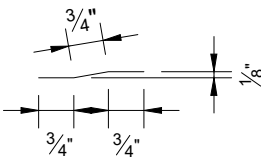
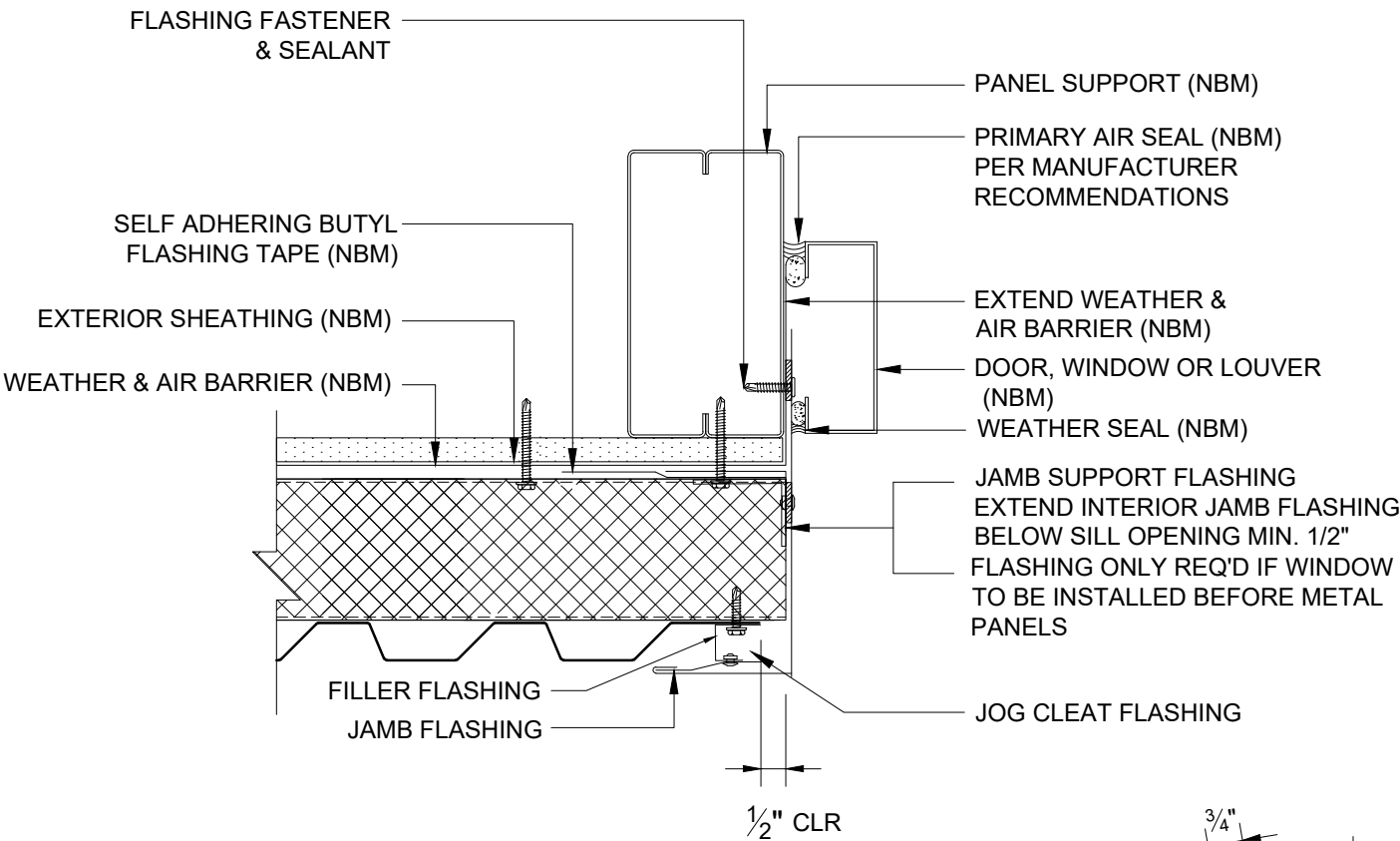
Vertical Installation



DOOR/WINDOW/LOUVER SILL DETAIL

*NBM=(NOT BY MORIN)

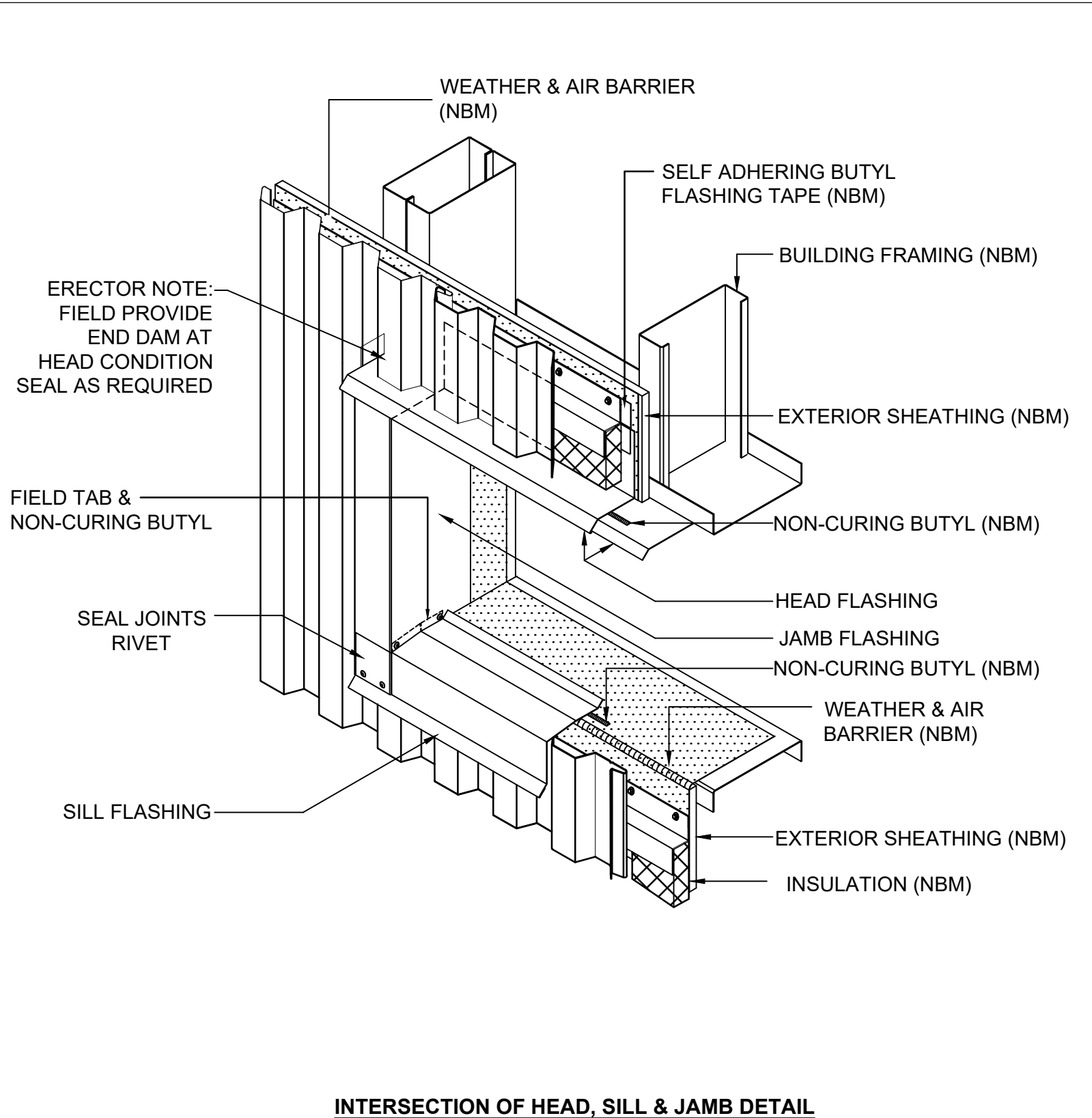
Vertical Installation



DOOR/WINDOW/LOUVER JAMB DETAIL

*NBM=(NOT BY MORIN)

Vertical Installation

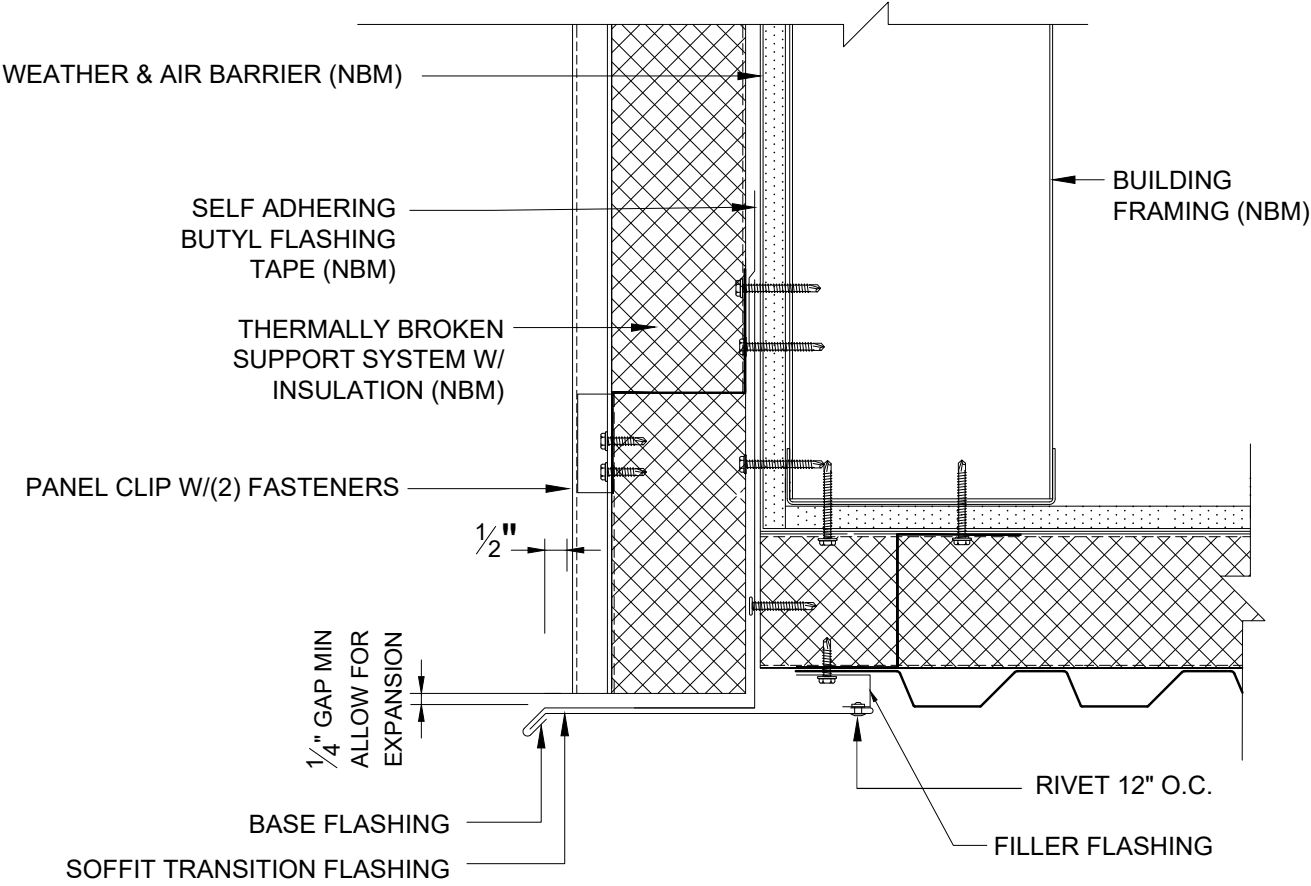


*NBM=(NOT BY MORIN)

Morin Integrity Series



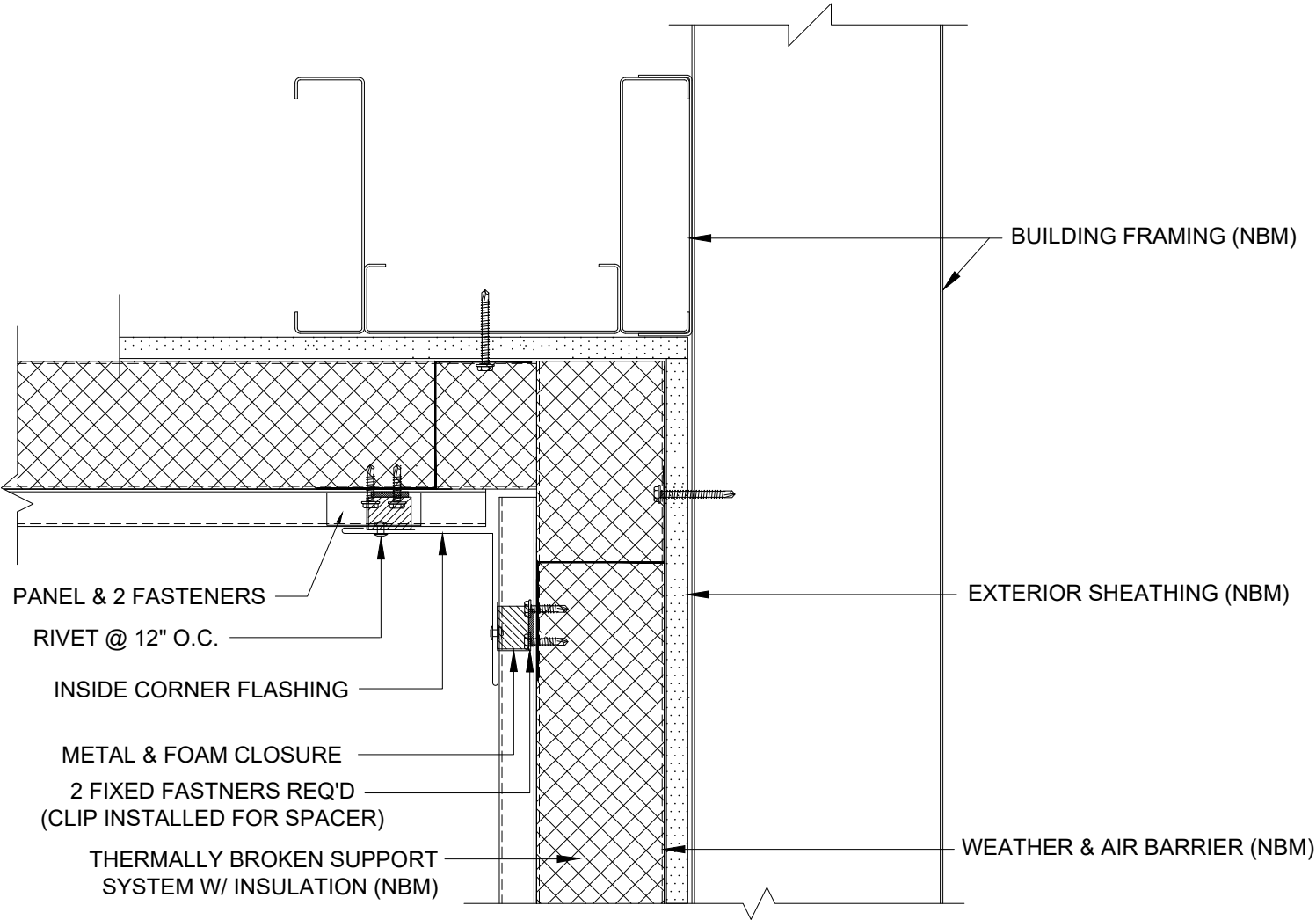
Vertical Installation



FRONT SOFFIT DETAIL

*NBM=(NOT BY MORIN)

Vertical Installation

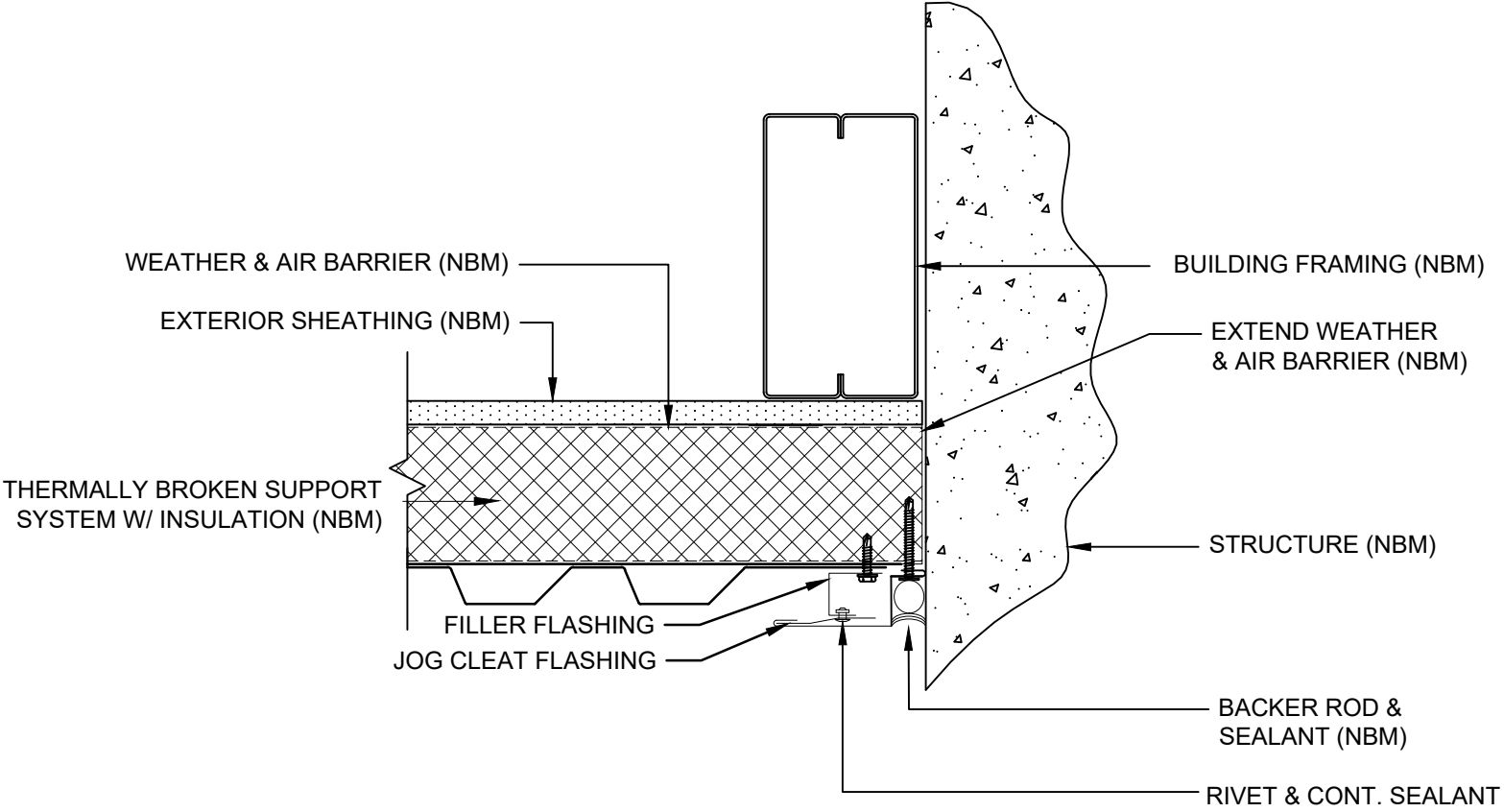


BACK SOFFIT DETAIL

*NBM=(NOT BY MORIN)

Morin Integrity Series

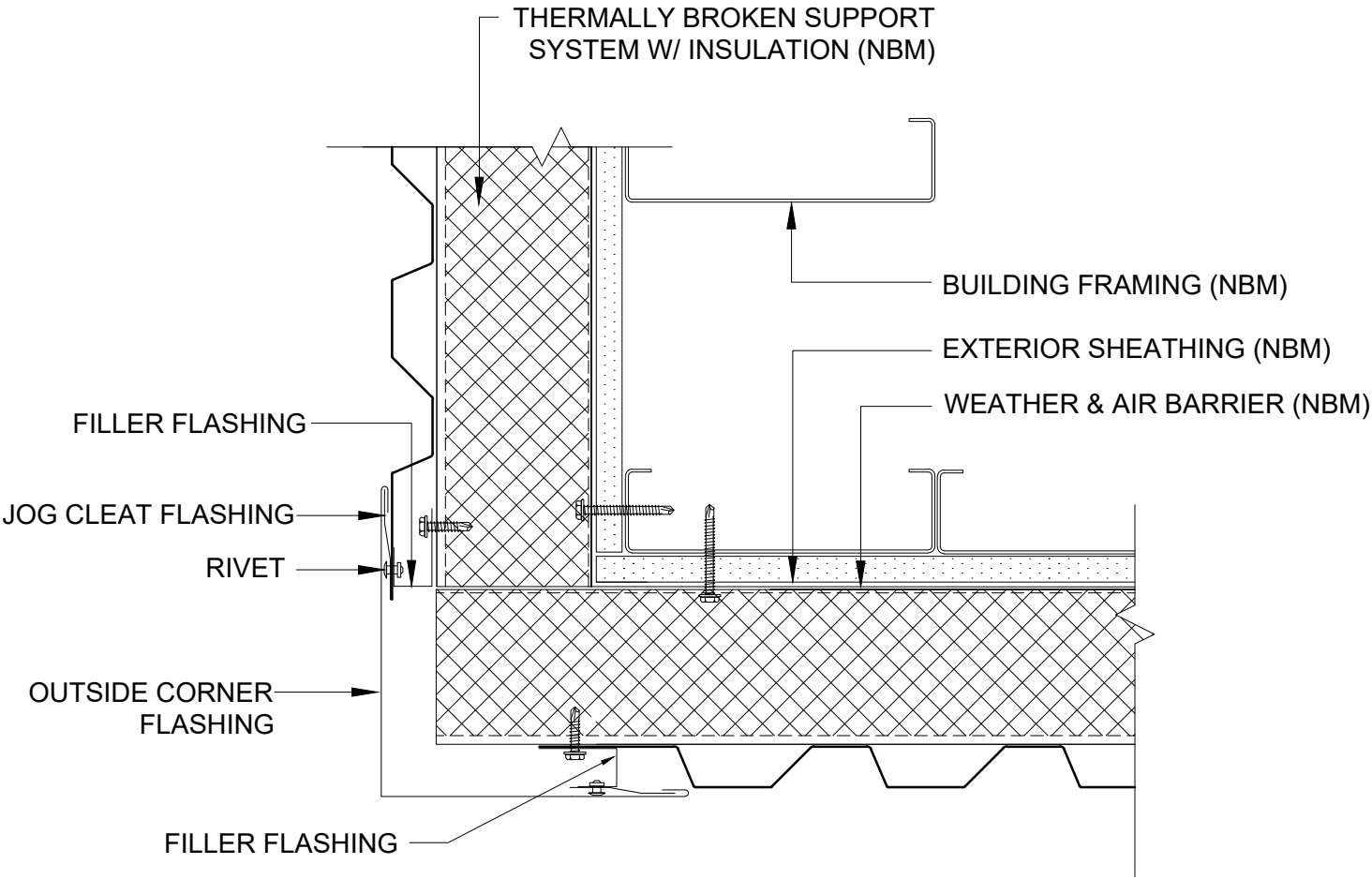
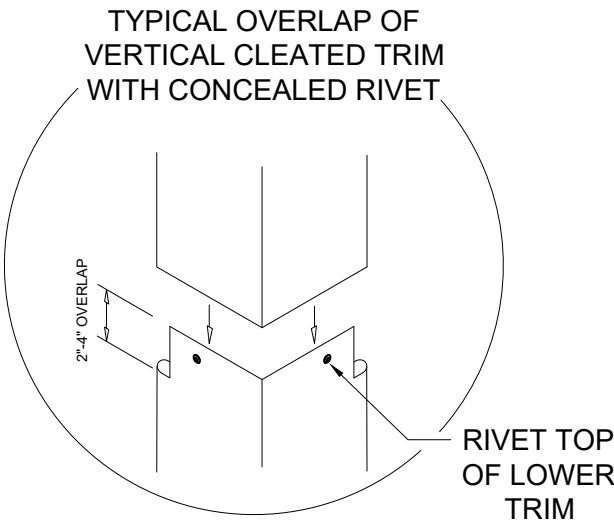
Vertical Installation



ENDWALL DETAIL

*NBM=(NOT BY MORIN)

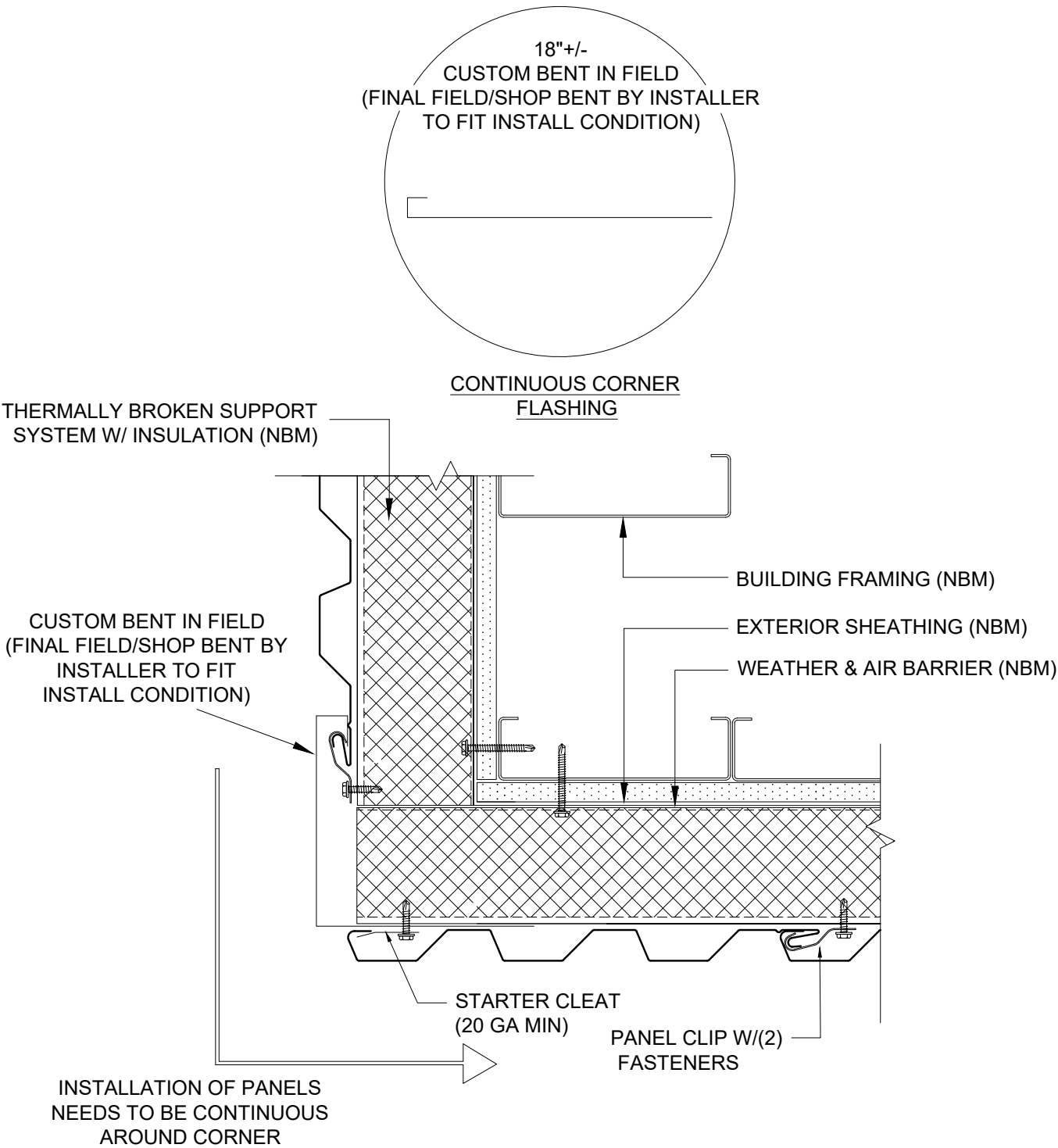
Vertical Installation



OUTSIDE CORNER DETAIL

*NBM=(NOT BY MORIN)

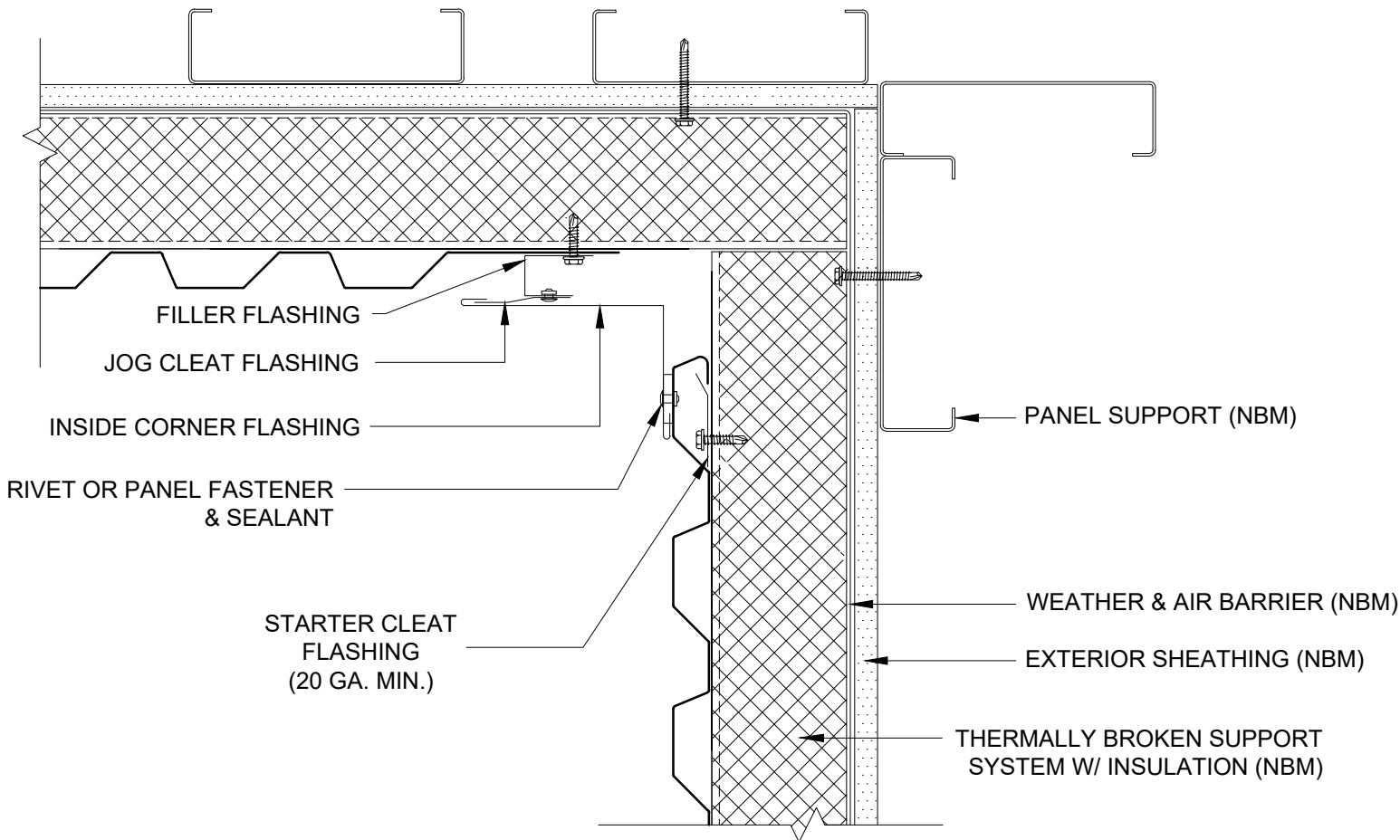
Vertical Installation



CONTINUOUS CORNER DETAIL

*NBM=(NOT BY MORIN)

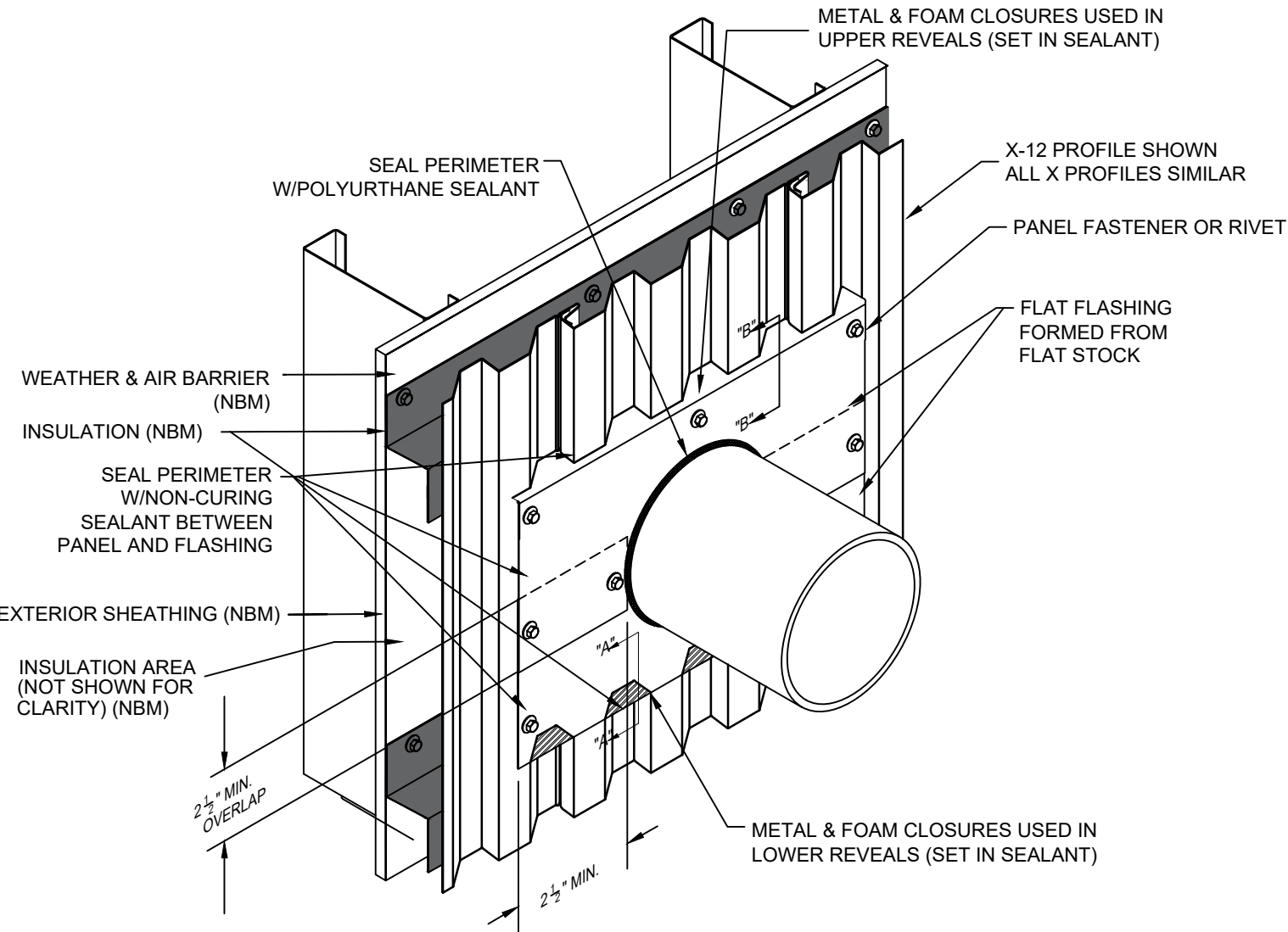
Vertical Installation



INSIDE CORNER DETAIL

*NBM=(NOT BY MORIN)

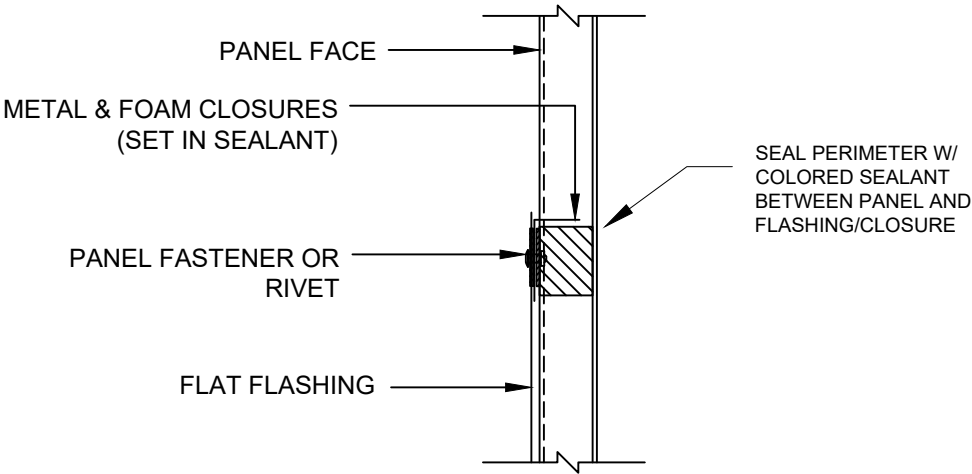
Vertical Installation



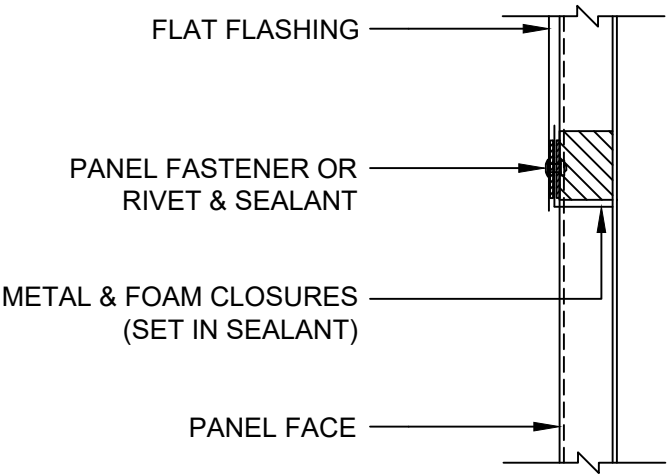
PENETRATION ISOMETRIC

*NBM=(NOT BY MORIN)

Vertical Installation



SECTION "B"-"B"



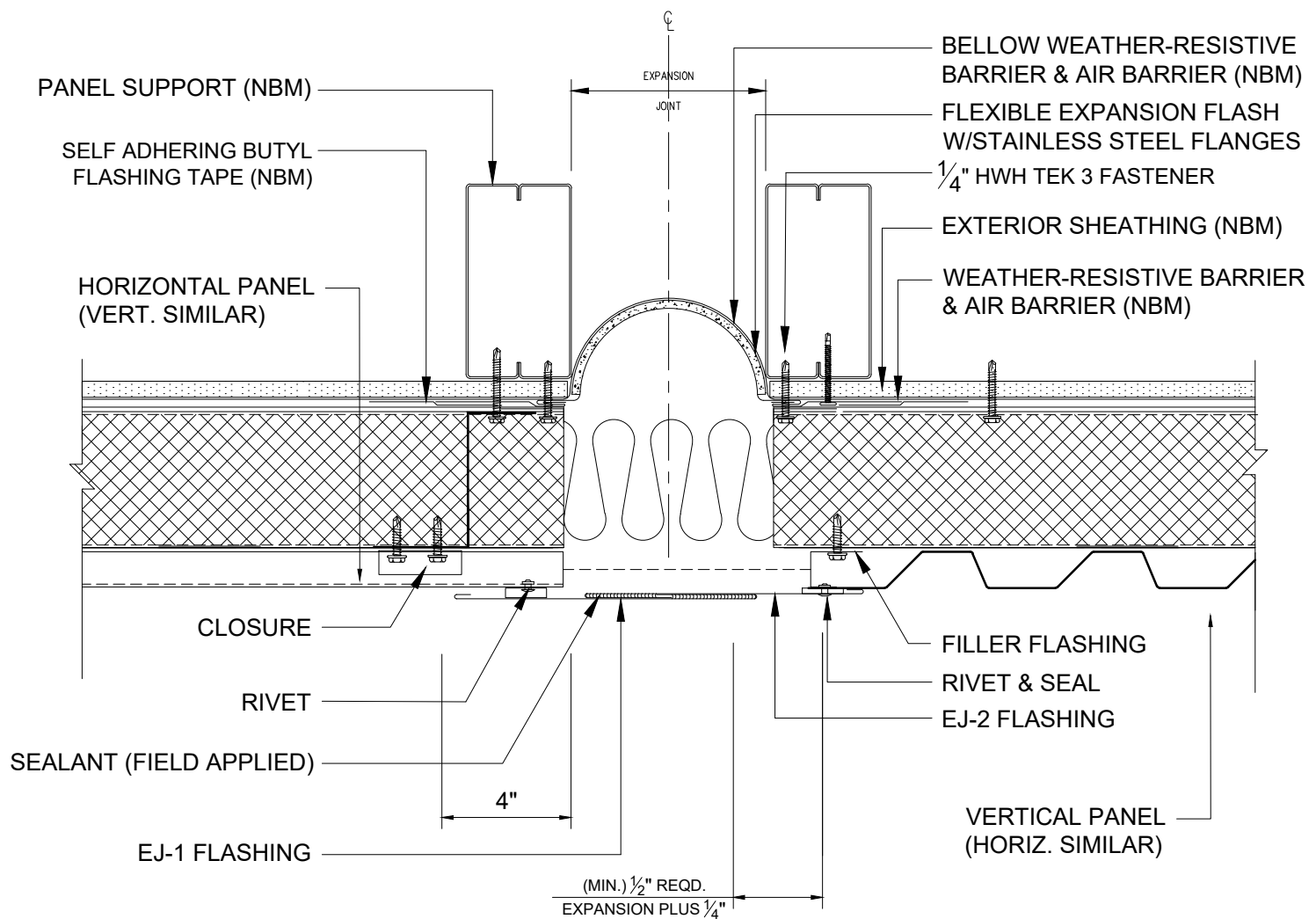
SECTION "A"-"A"

PENETRATION DETAIL

*NBM=(NOT BY MORIN)

Morin Integrity Series

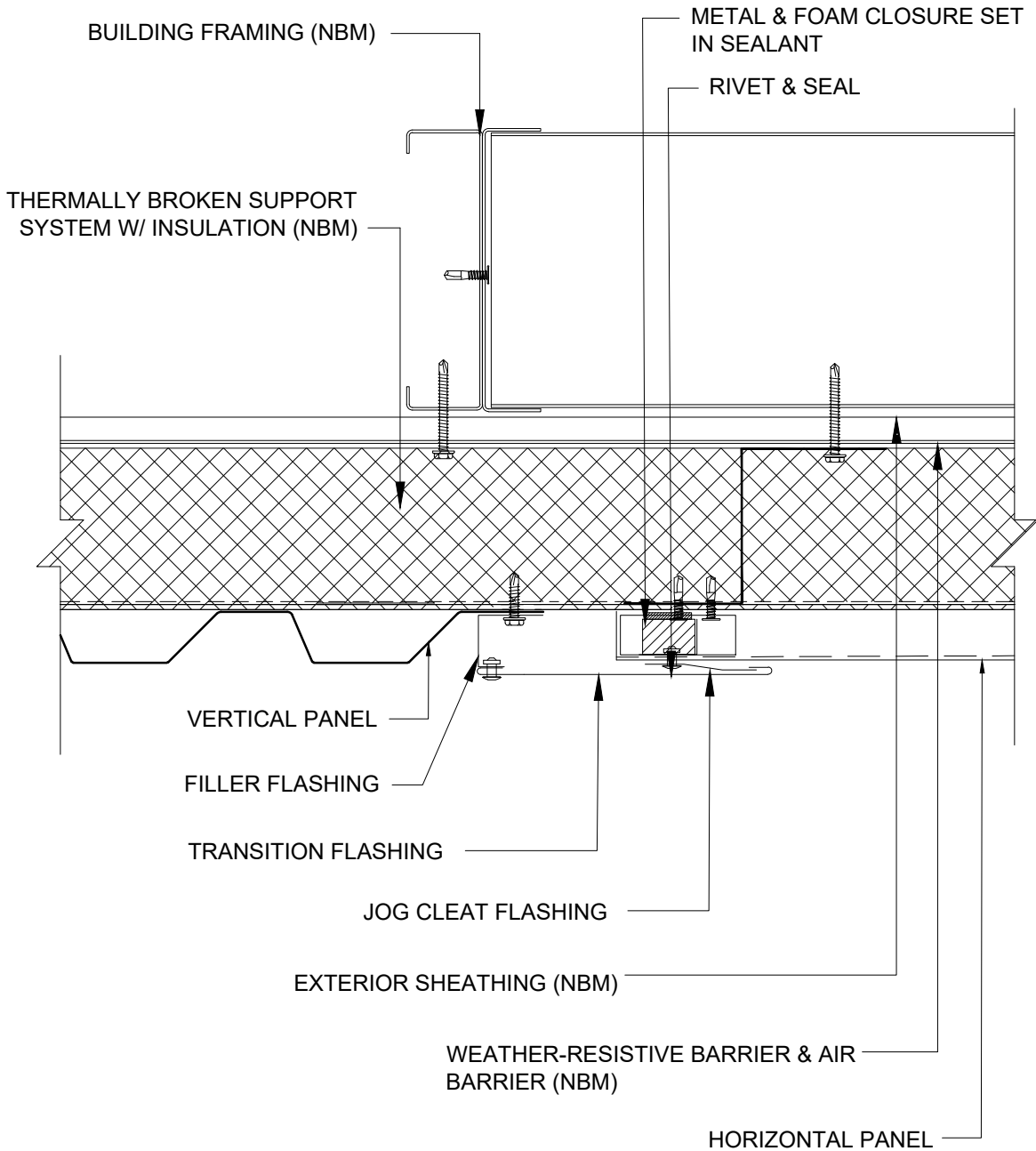
Vertical Installation



EXPANSION DETAIL

*NBM=(NOT BY MORIN)

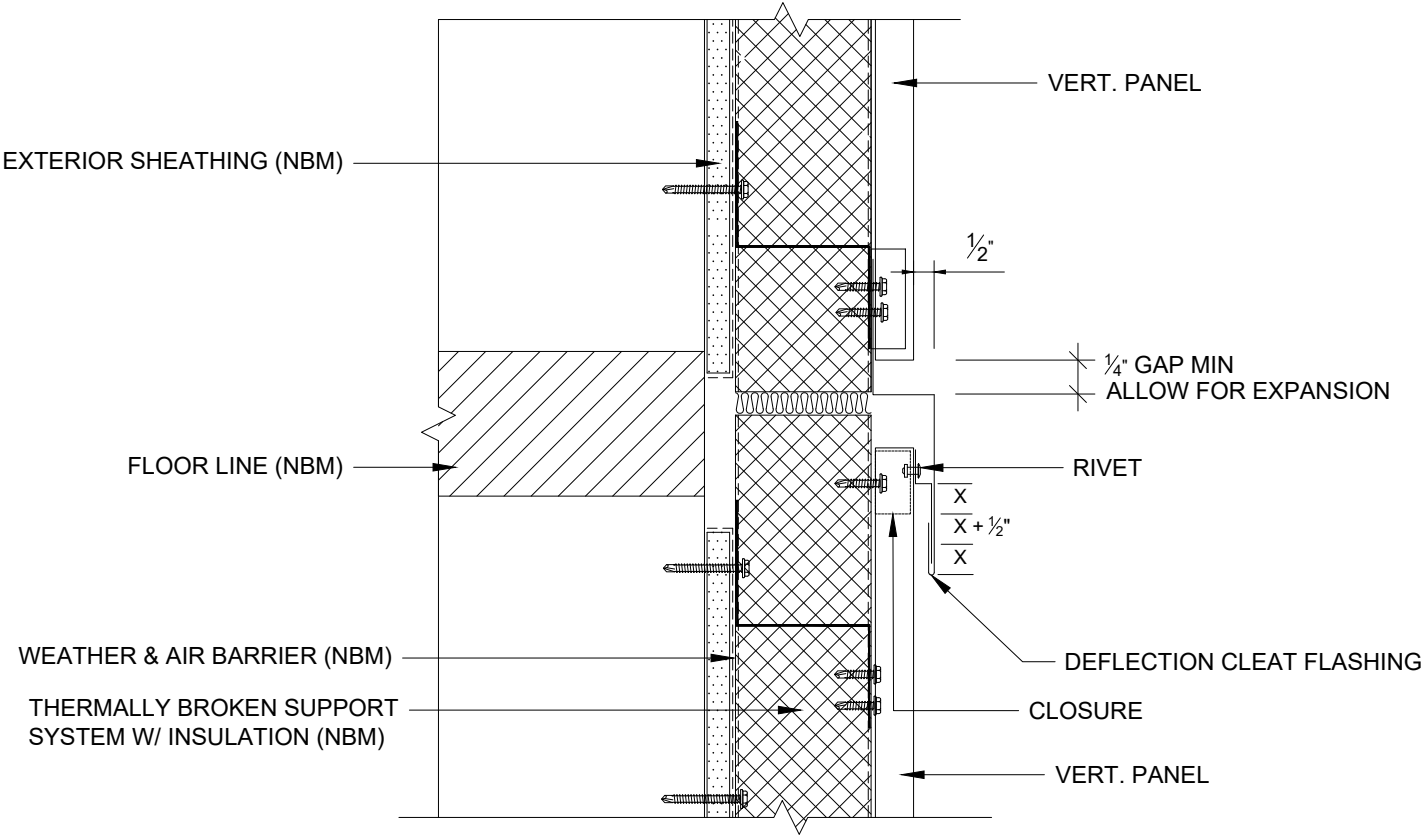
Vertical Installation



TRANSITION DETAIL

*NBM=(NOT BY MORIN)

Vertical Installation



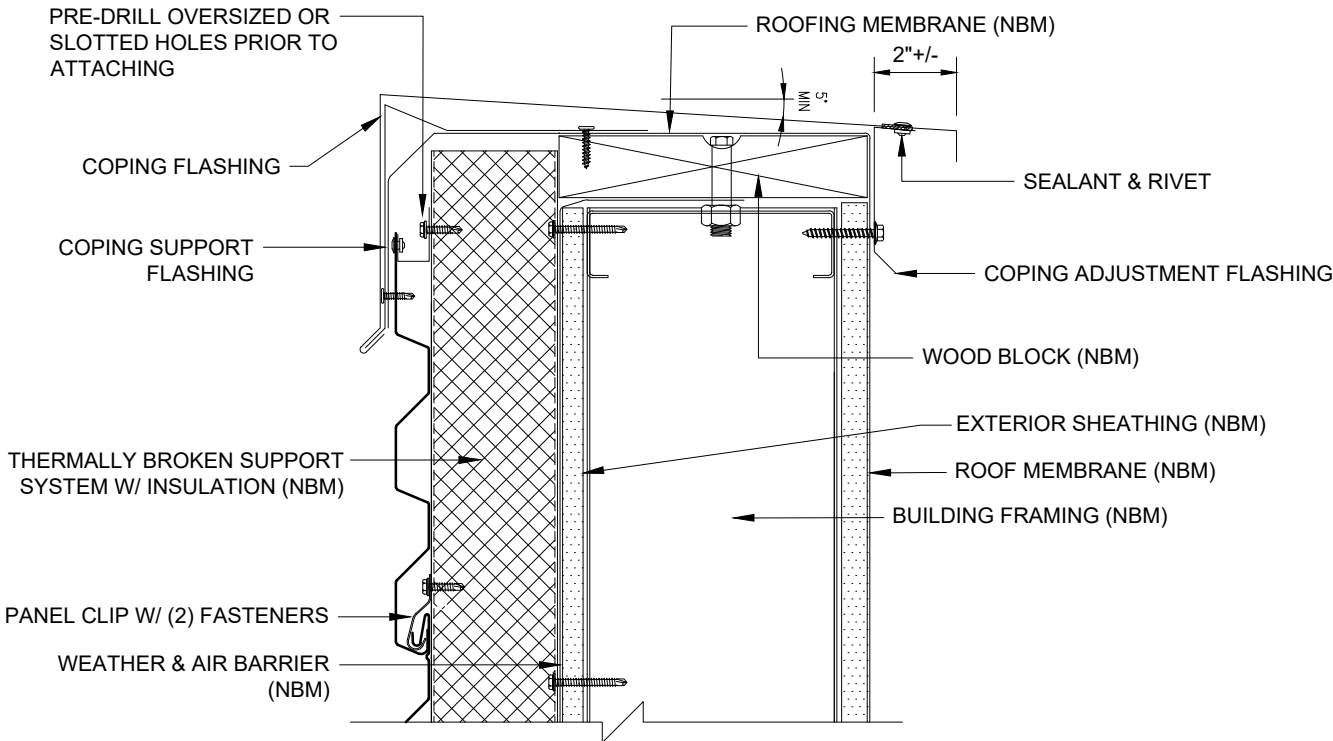
NOTE: X = AMOUNT OF DEFLECTION REQ'D

DEFLECTION/FLOOR SHRINKAGE JOINT DETAIL

*NBM=(NOT BY MORIN)

Morin Integrity Series

Horizontal Installation

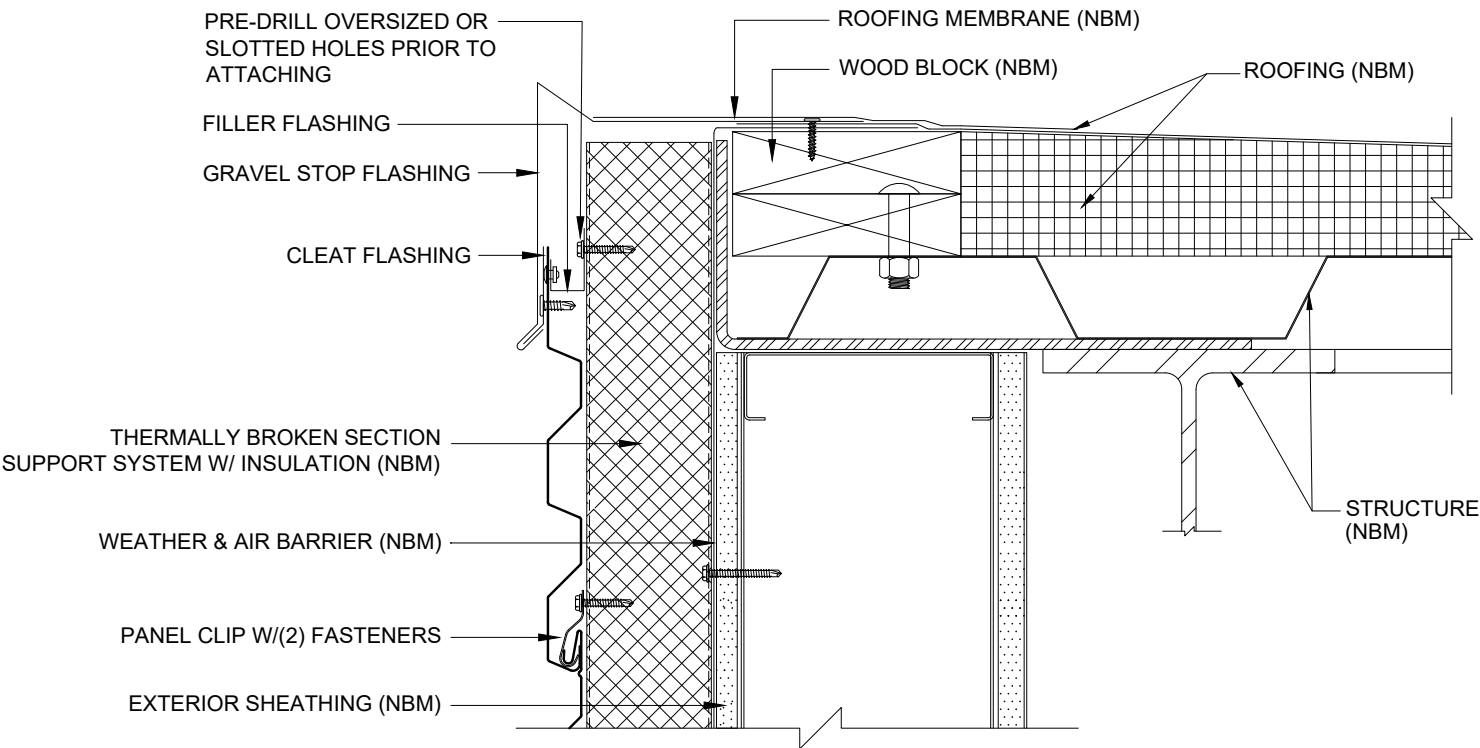


COPING DETAIL

*NBM=(NOT BY MORIN)

Morin Integrity Series

Horizontal Installation

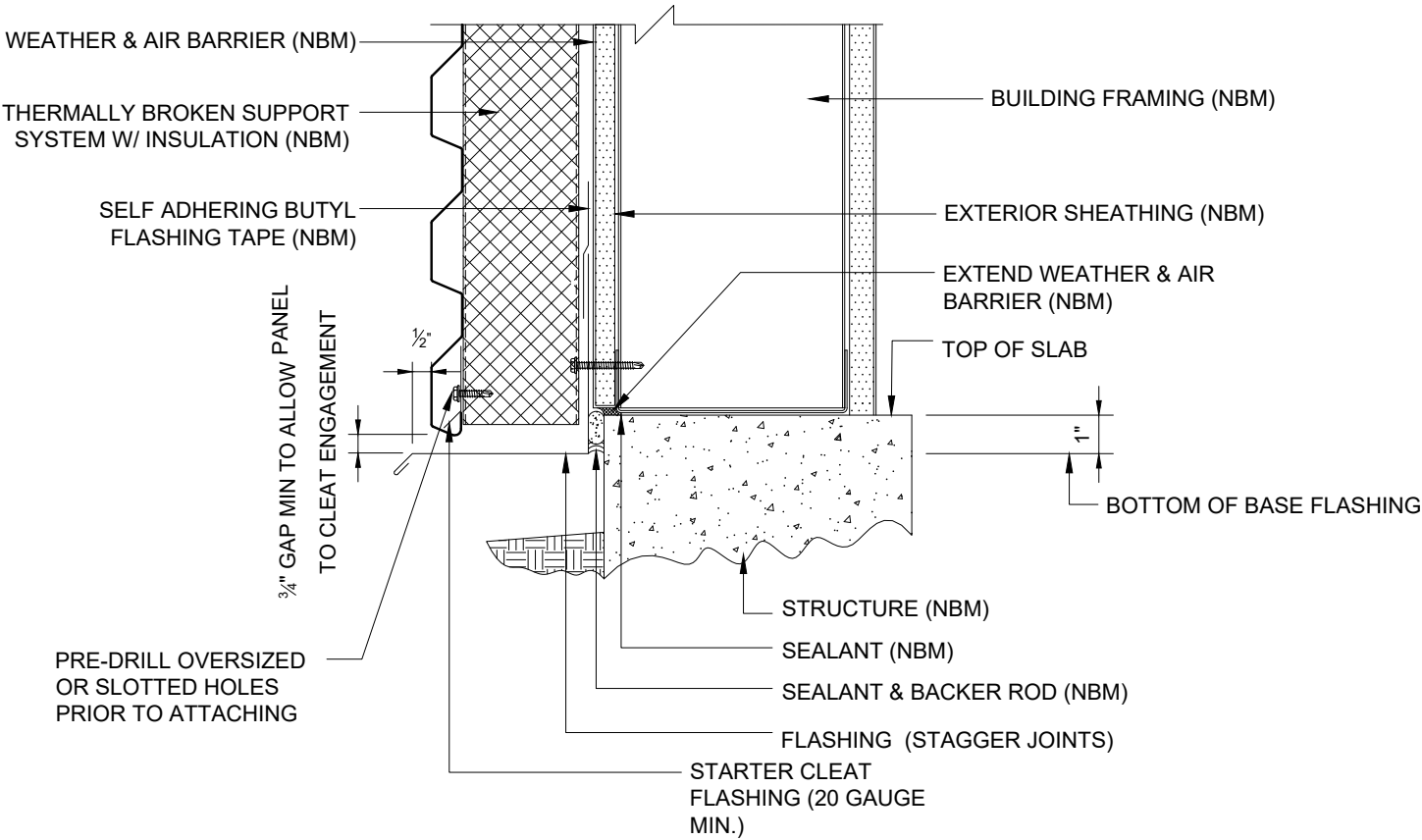
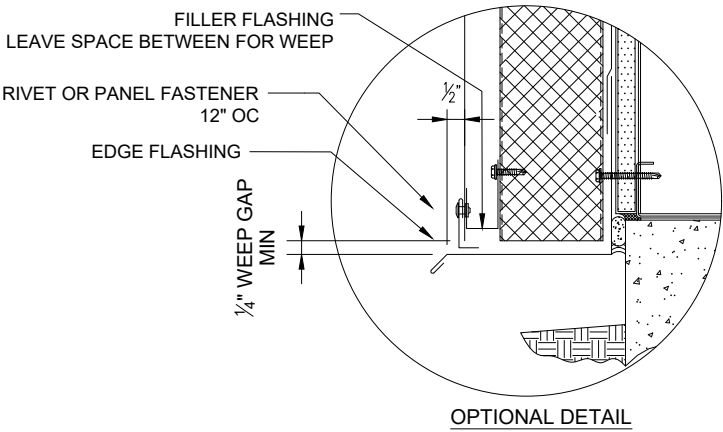


GRAVELSTOP DETAIL

*NBM=(NOT BY MORIN)

Morin Integrity Series

Horizontal Installation

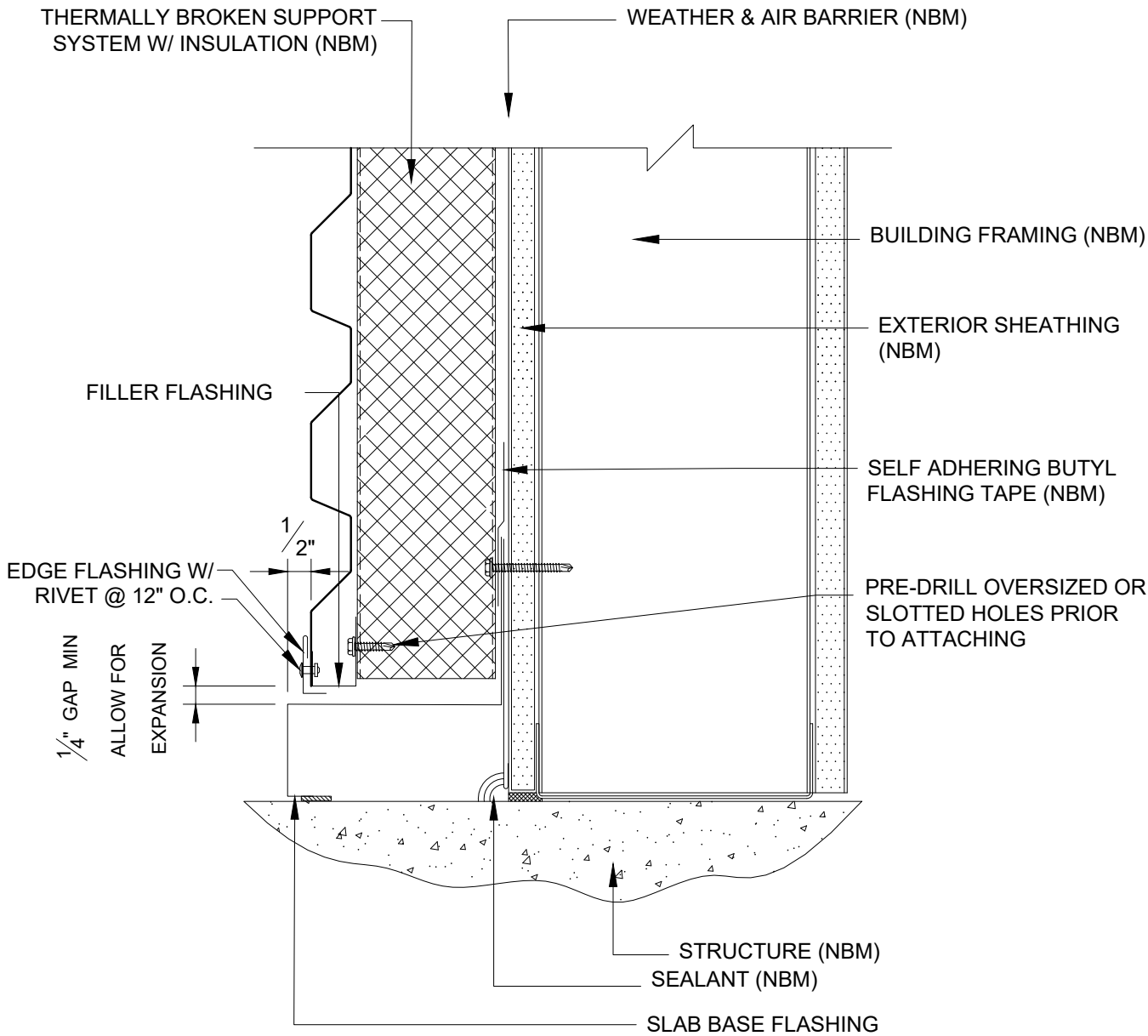


BASE AT CURB OR EDGE OF SLAB DETAIL

*NBM=(NOT BY MORIN)

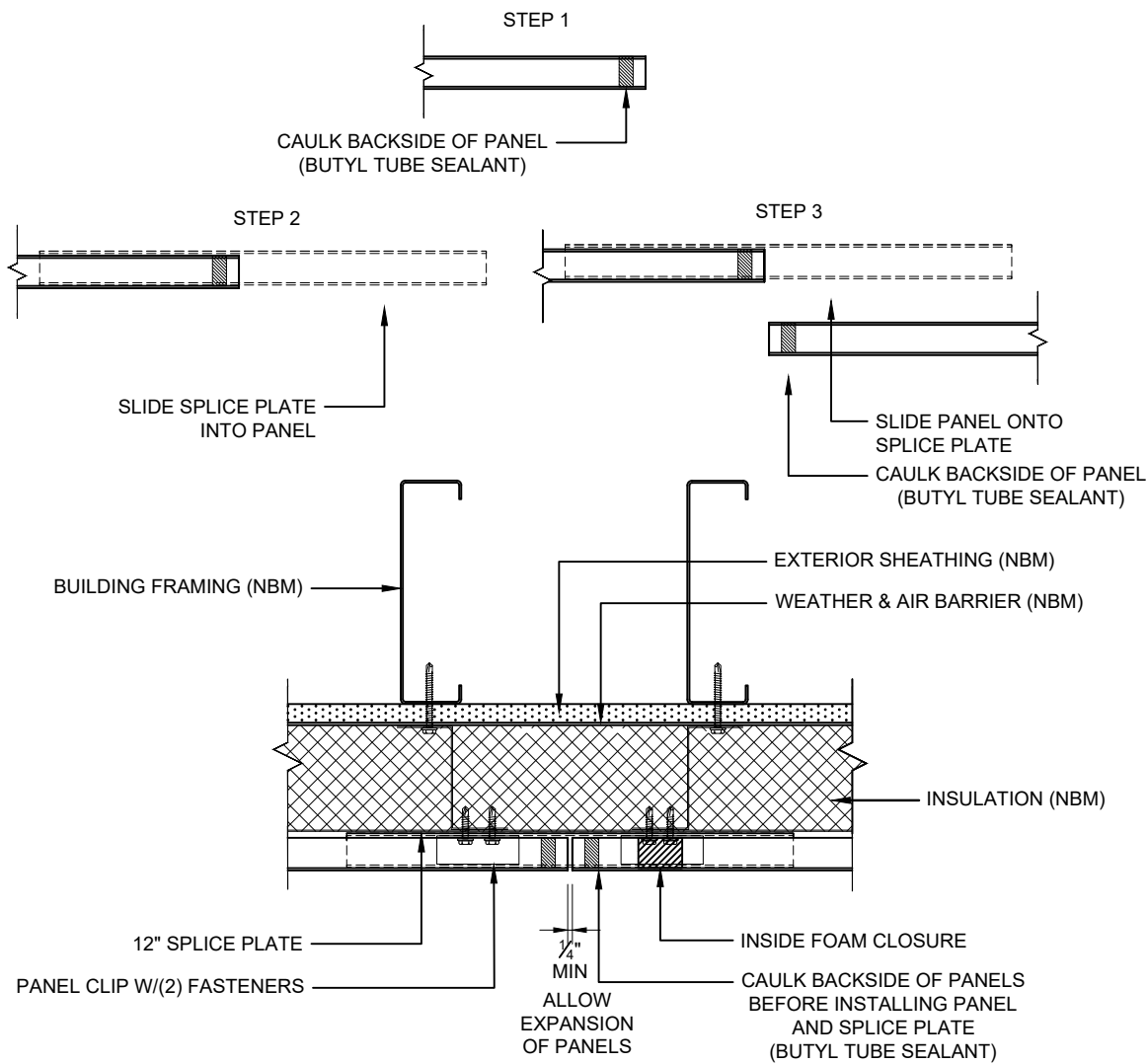
Morin Integrity Series

Horizontal Installation



BASE AT SLAB DETAIL

*NBM=(NOT BY MORIN)

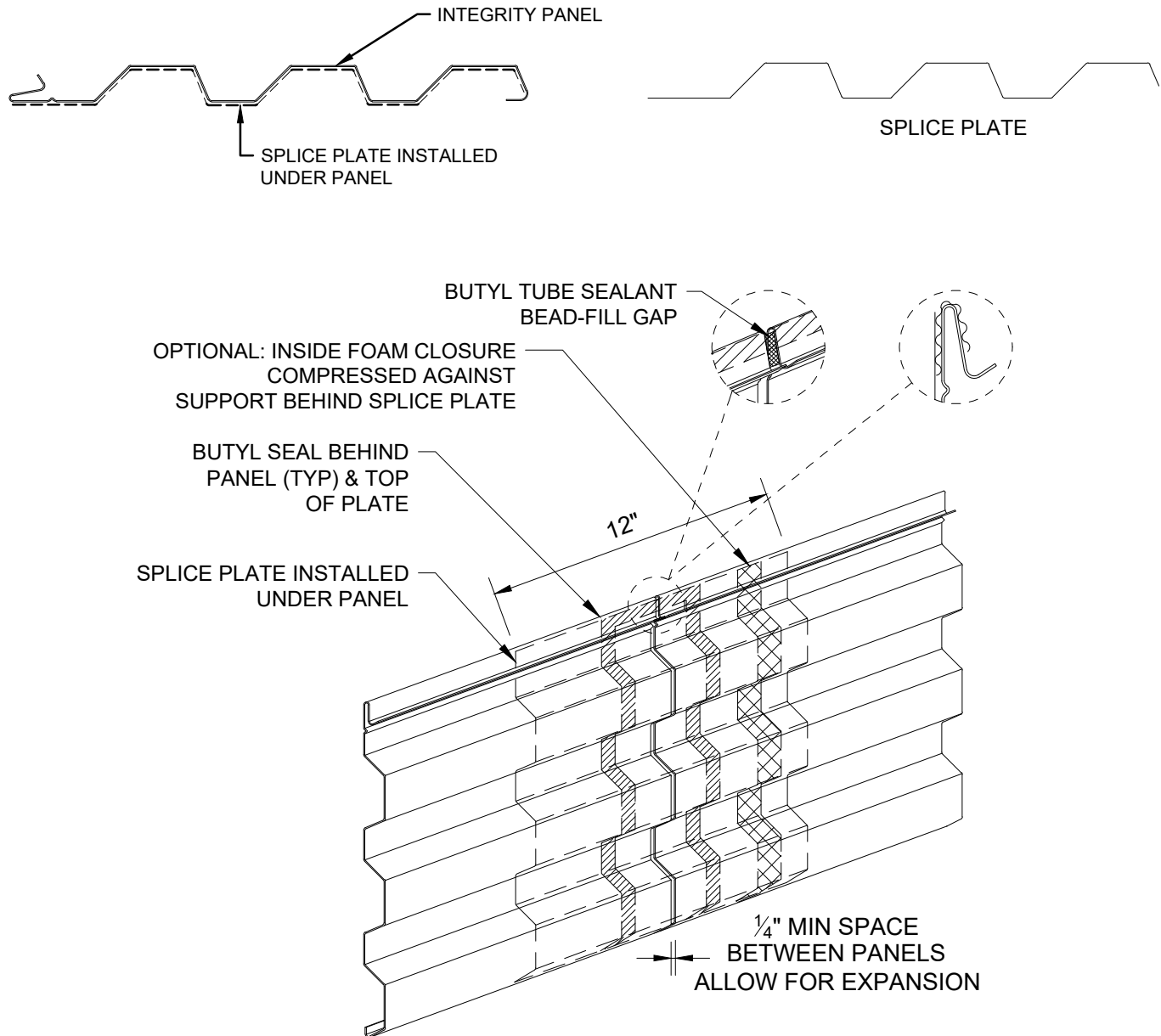


SPLICE PLATE DETAIL

*NBM=(NOT BY MORIN)

Morin Integrity Series

Horizontal Installation



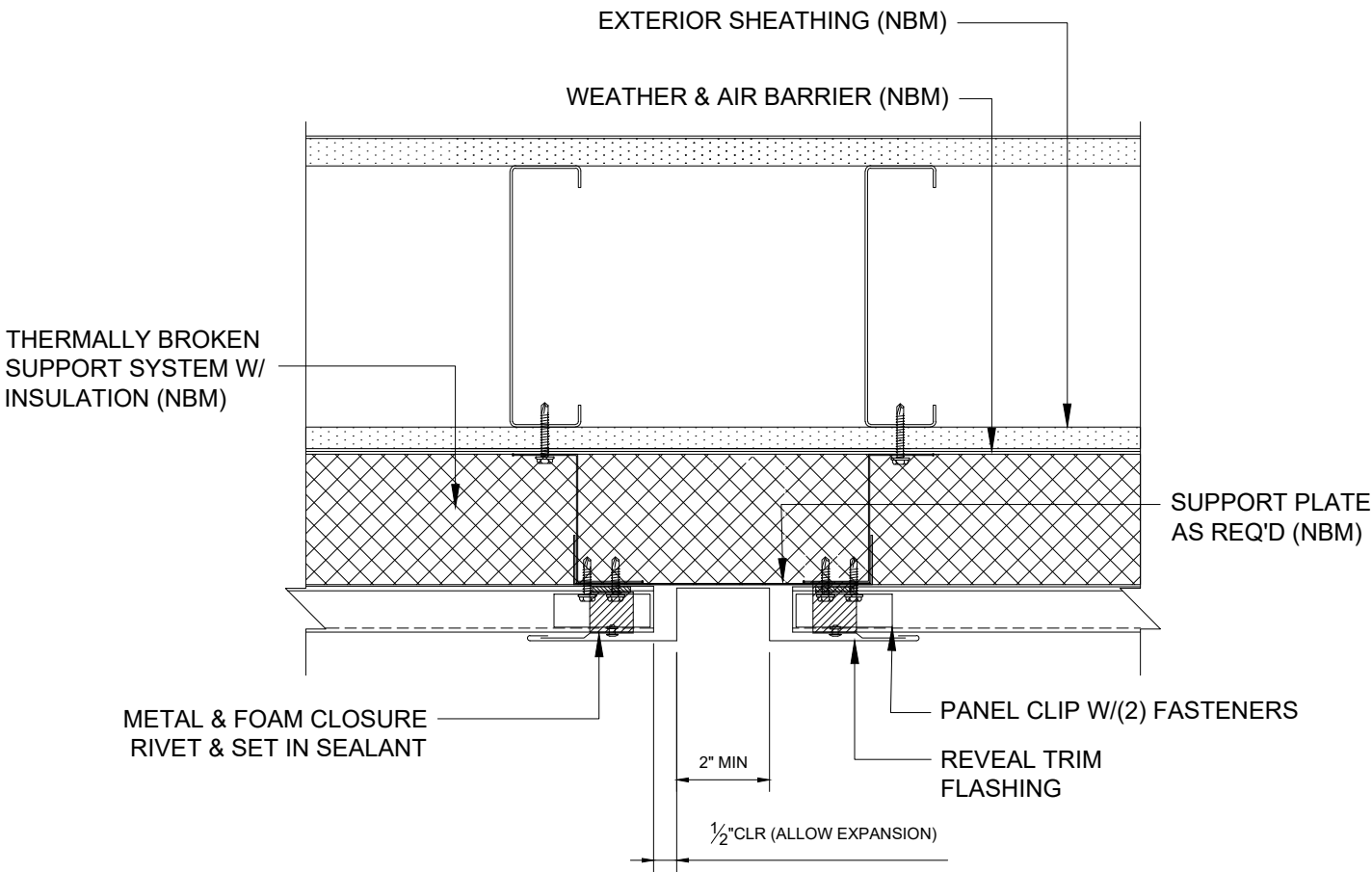
SPLICE PLATE ASSEMBLY

SPECIAL NOTE:
NOT SUGGESTED BEING MADE OF
.050AL OR 18GA DUE TO MATERIAL
THICKNESS

*NBM=(NOT BY MORIN)

Morin Integrity Series

Horizontal Installation



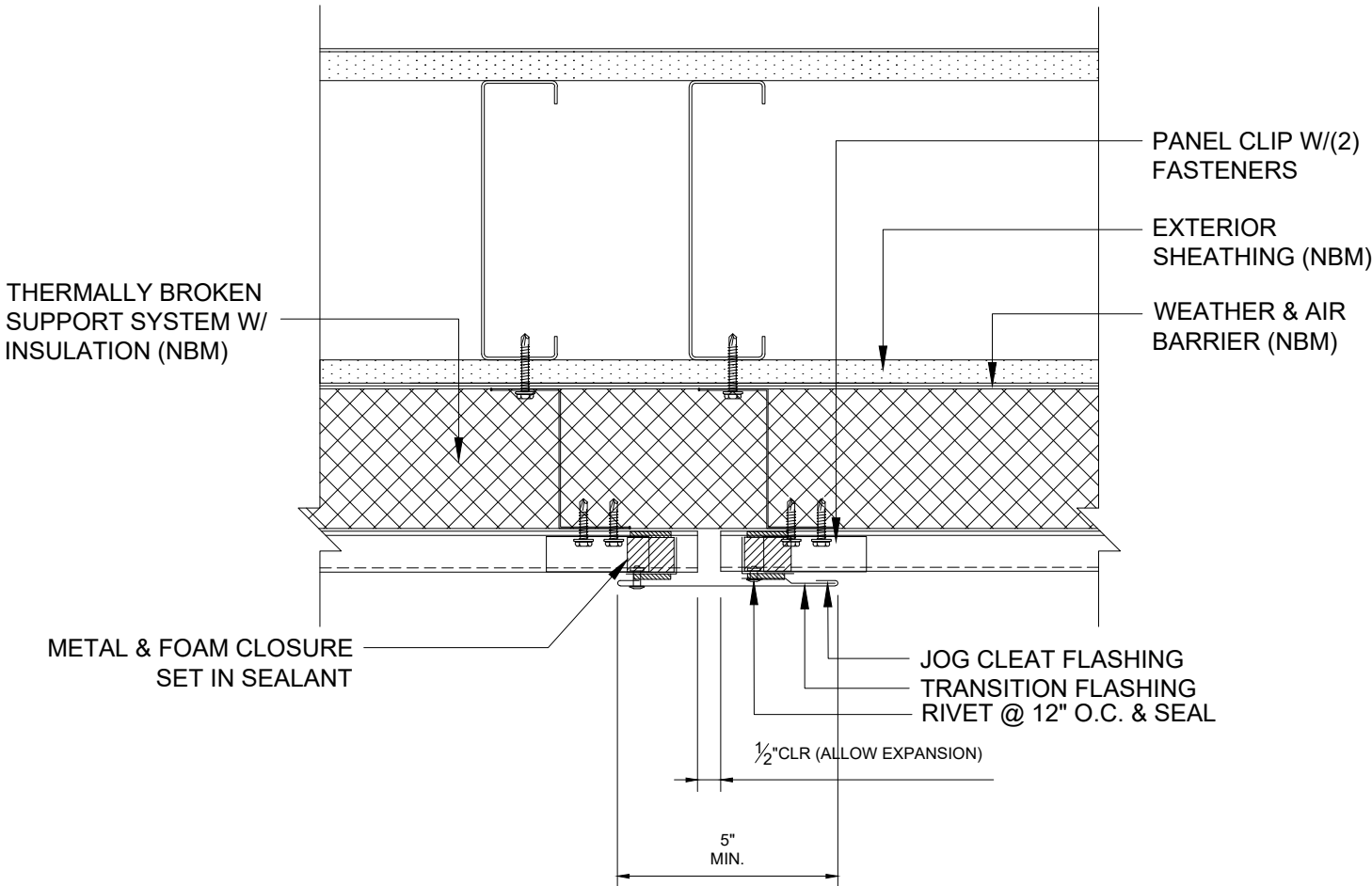
***SEE PAGE 39 FOR HOW TO FIX
FASTEN TRIM WITH CLEATS**

REVEAL TRIM DETAIL

*NBM=(NOT BY MORIN)

Morin Integrity Series

Horizontal Installation

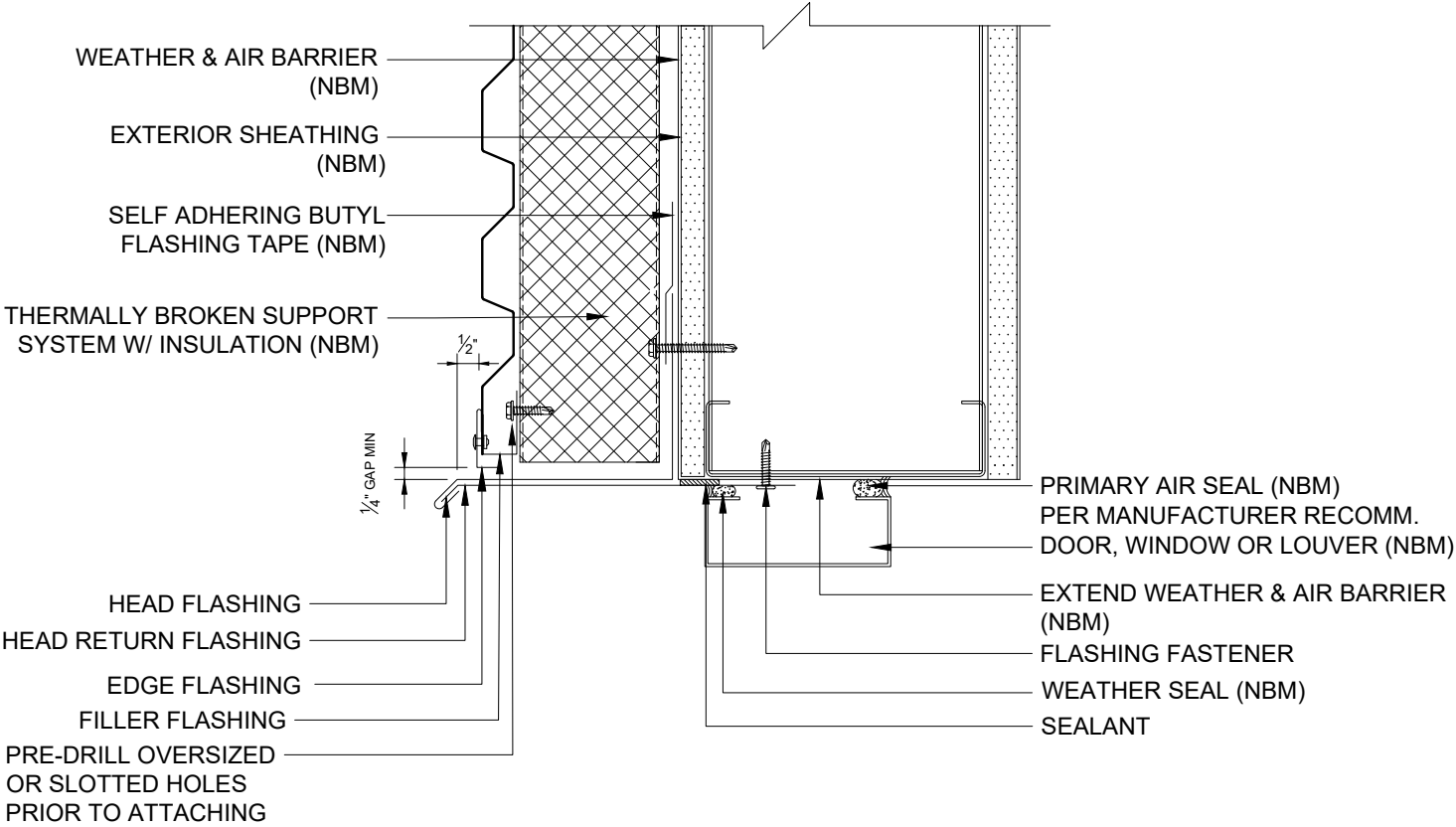


TRANSITION TRIM DETAIL

*NBM=(NOT BY MORIN)

Morin Integrity Series

Horizontal Installation

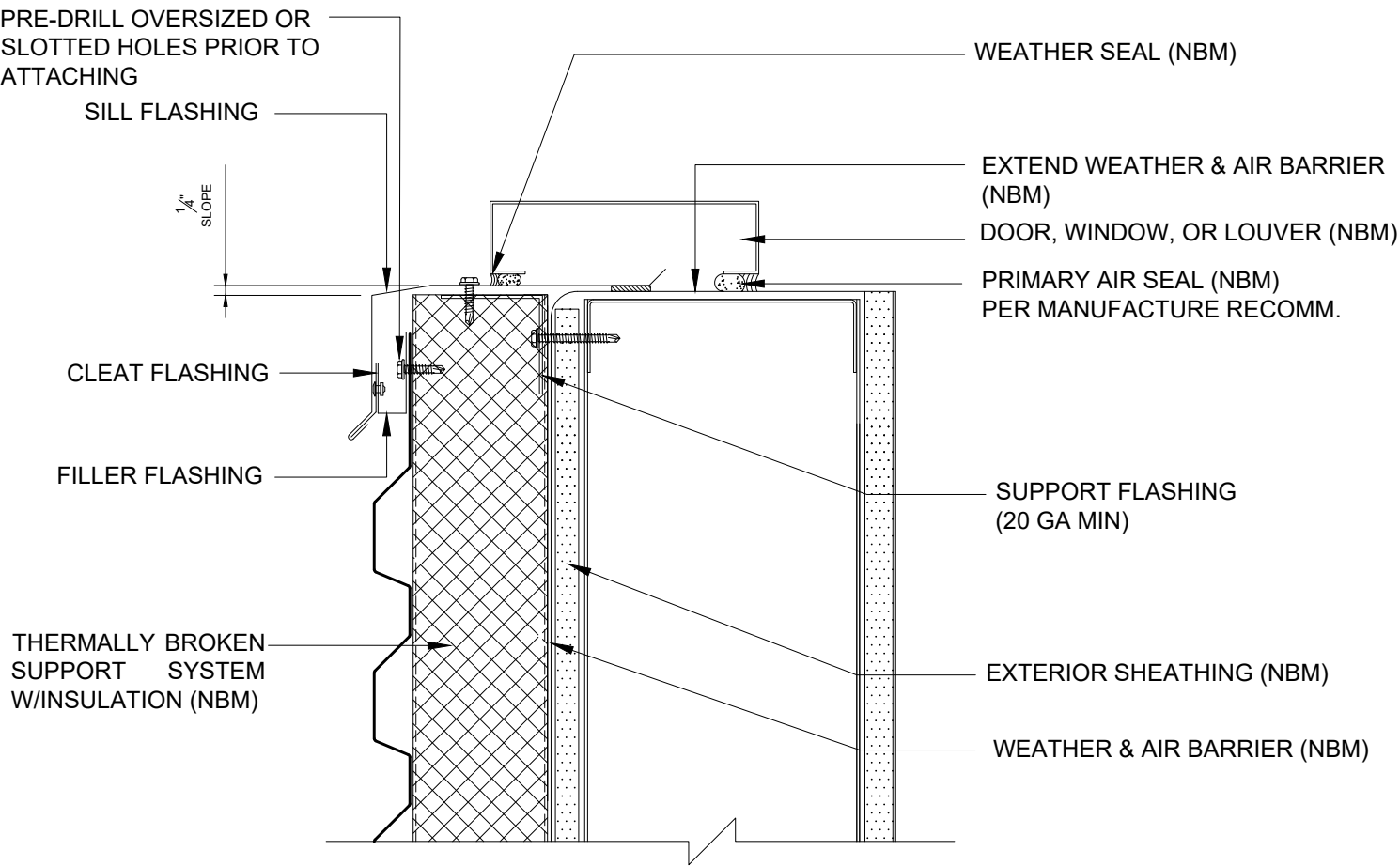


DOOR/WINDOW/LOUVER HEAD DETAIL

*NBM=(NOT BY MORIN)

Morin Integrity Series

Horizontal Installation

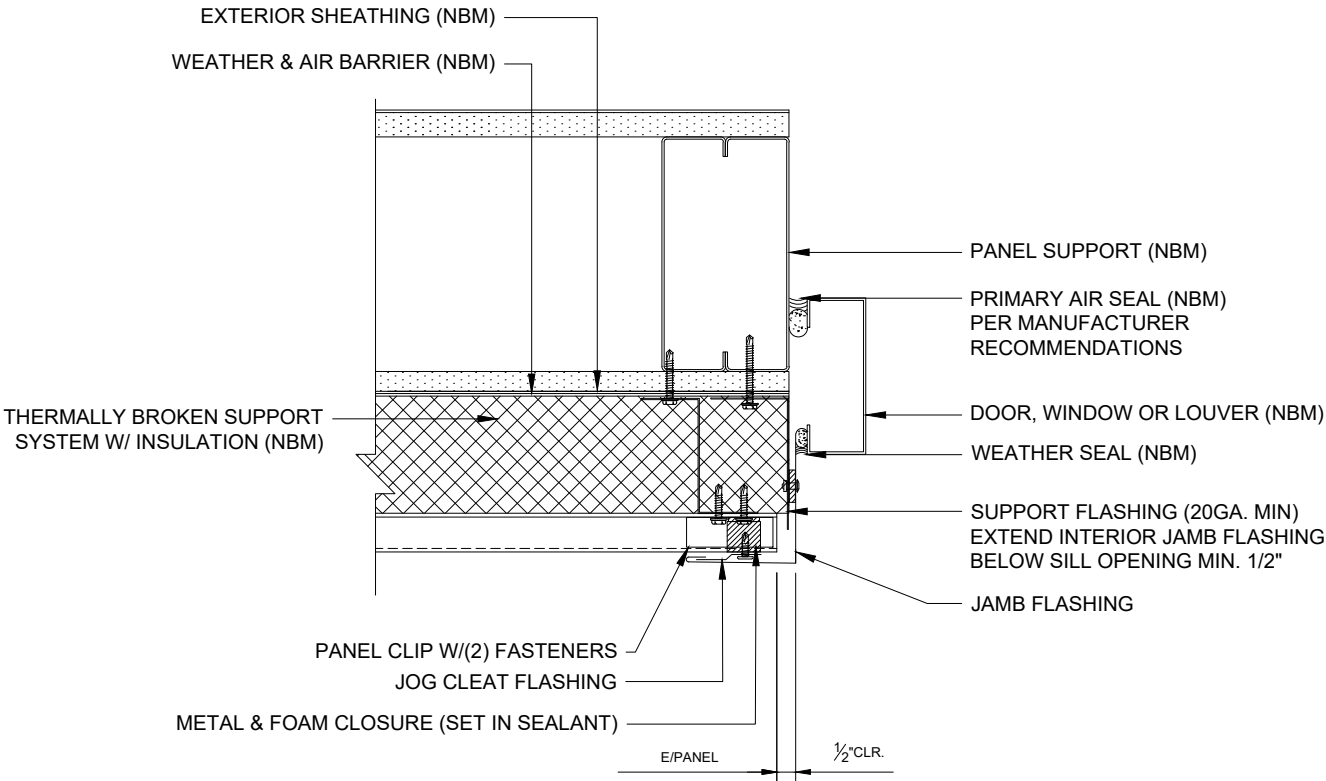


DOOR/WINDOW/LOUVER SILL DETAIL

*NBM=(NOT BY MORIN)

Morin Integrity Series

Horizontal Installation

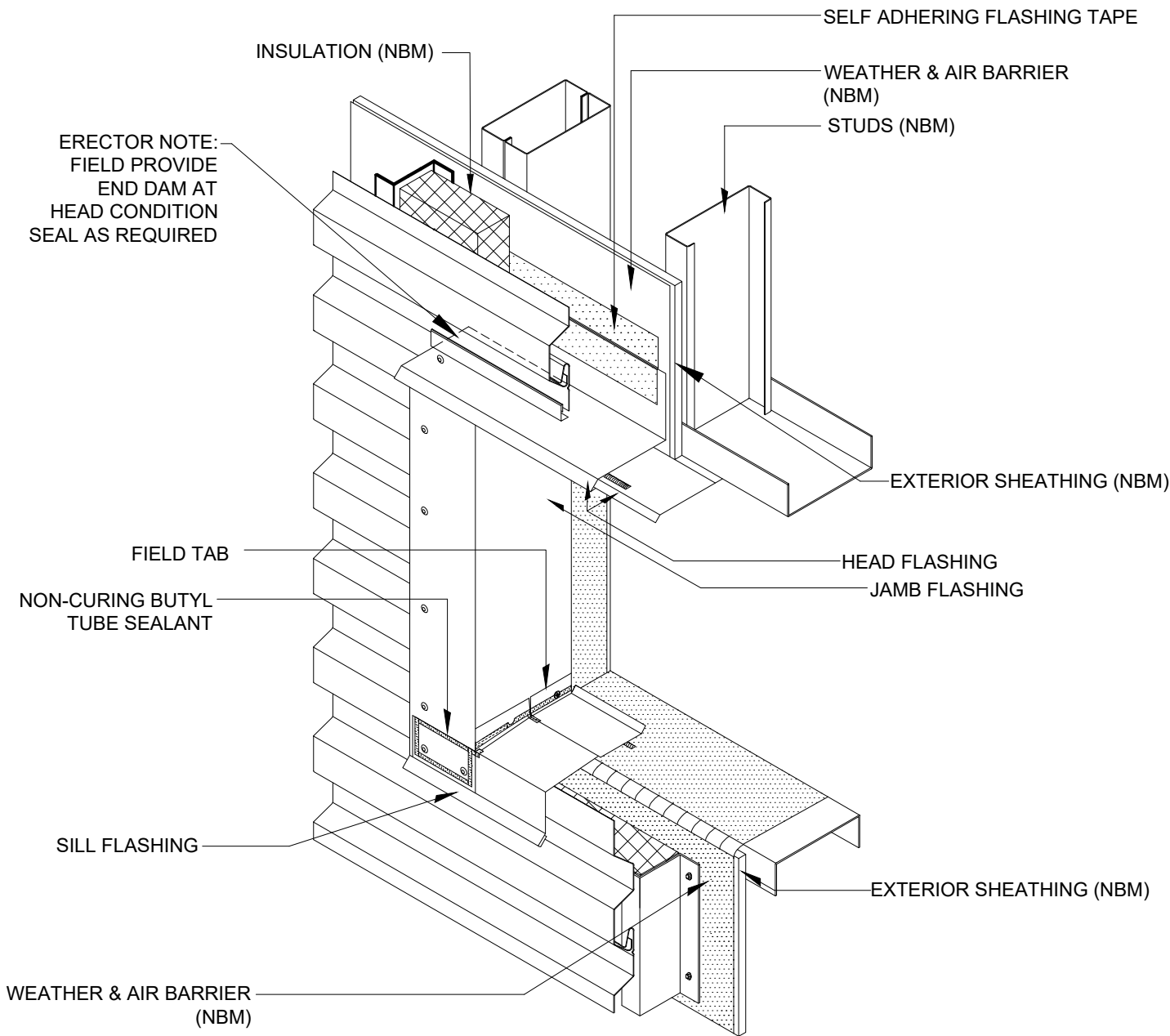


DOOR/WINDOW/LOUVER JAMB DETAIL

*NBM=(NOT BY MORIN)

Morin Integrity Series

Horizontal Installation

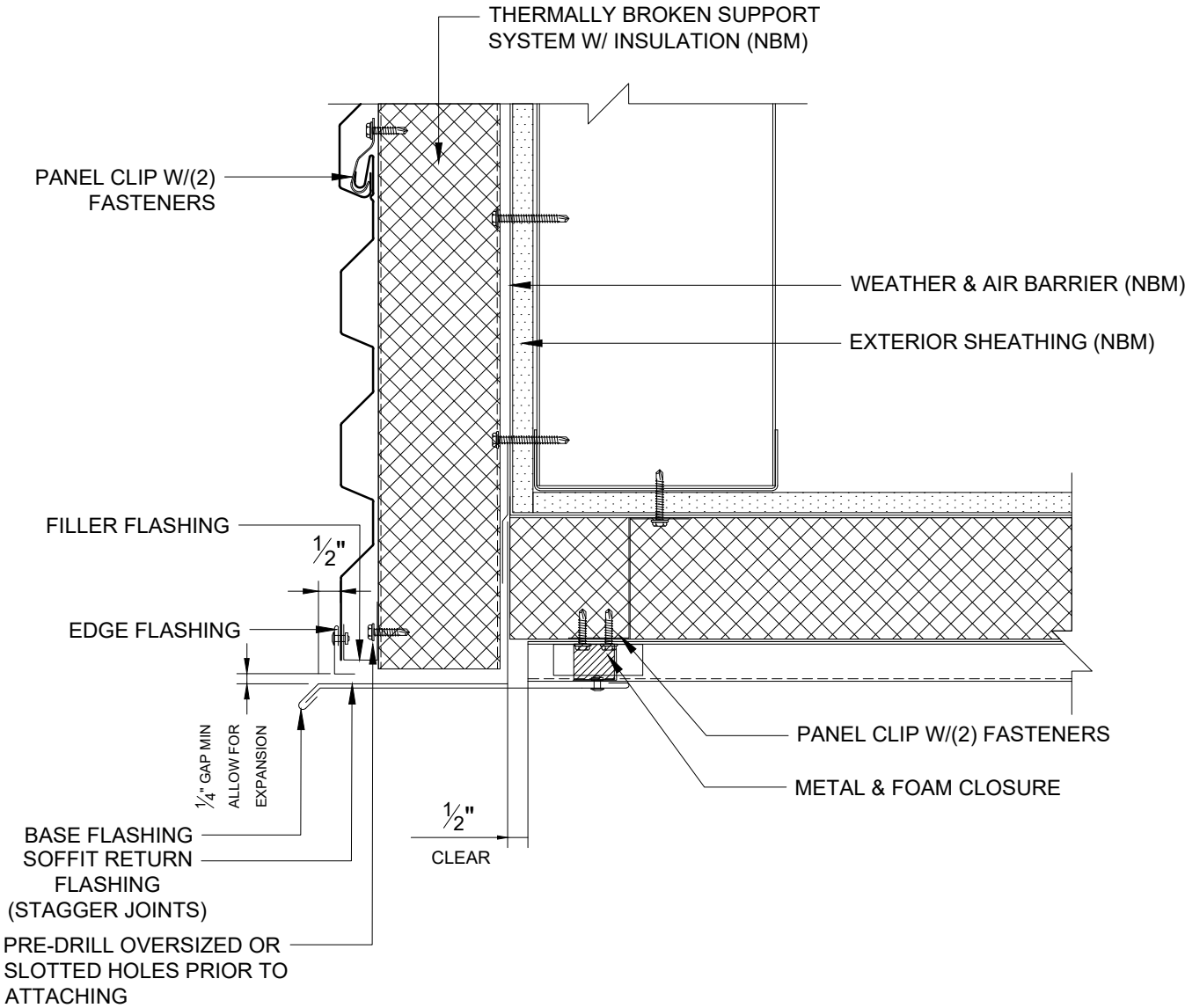


INTERSECTION OF HEAD/JAMB/SILL DETAIL

*NBM=(NOT BY MORIN)

Morin Integrity Series

Horizontal Installation

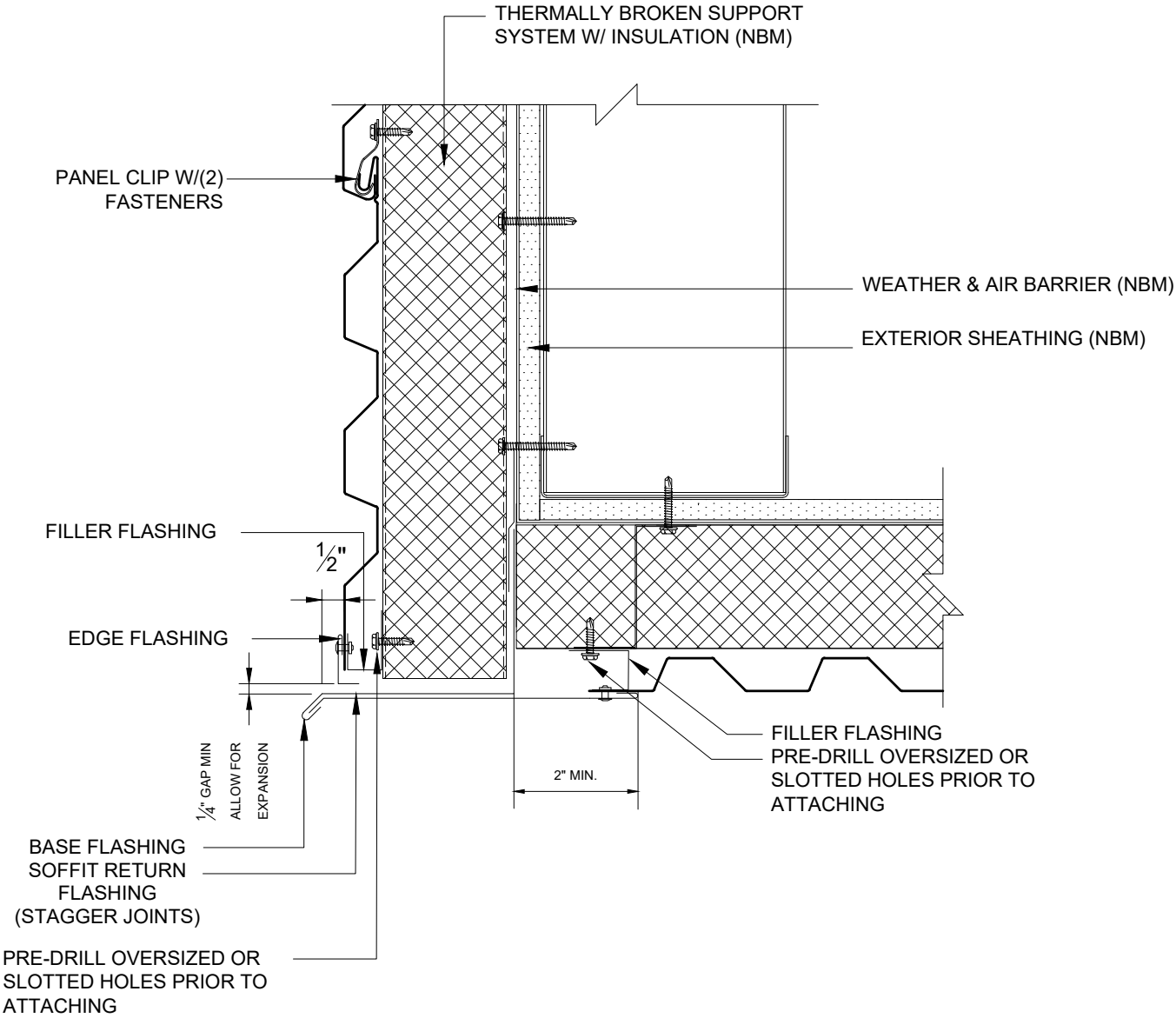


FRONT SOFFIT DETAIL

*NBM=(NOT BY MORIN)

Morin Integrity Series

Horizontal Installation

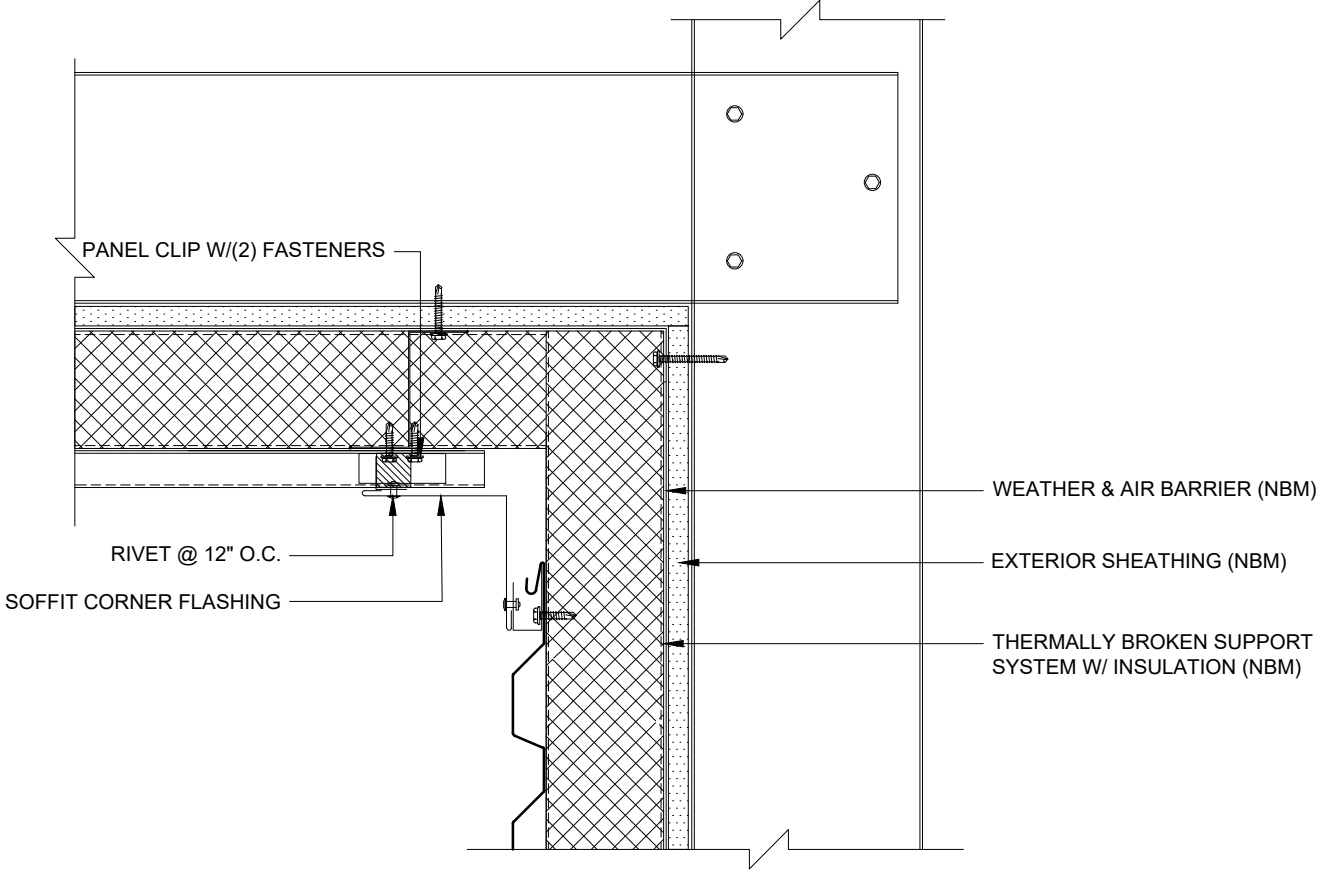


FRONT SOFFIT DETAIL

*NBM=(NOT BY MORIN)

Morin Integrity Series

Horizontal Installation

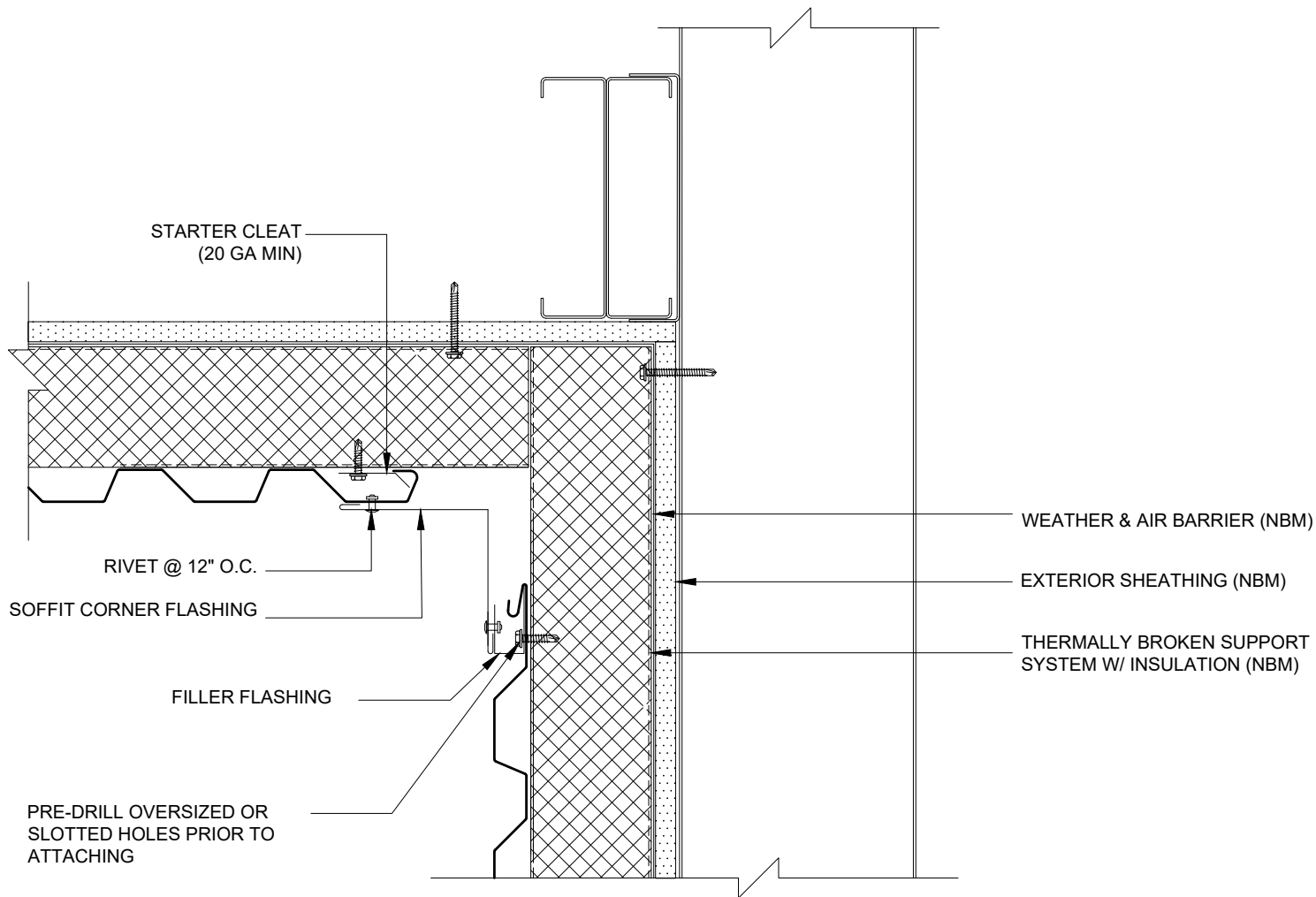


BACK SOFFIT DETAIL

*NBM=(NOT BY MORIN)

Morin Integrity Series

Horizontal Installation

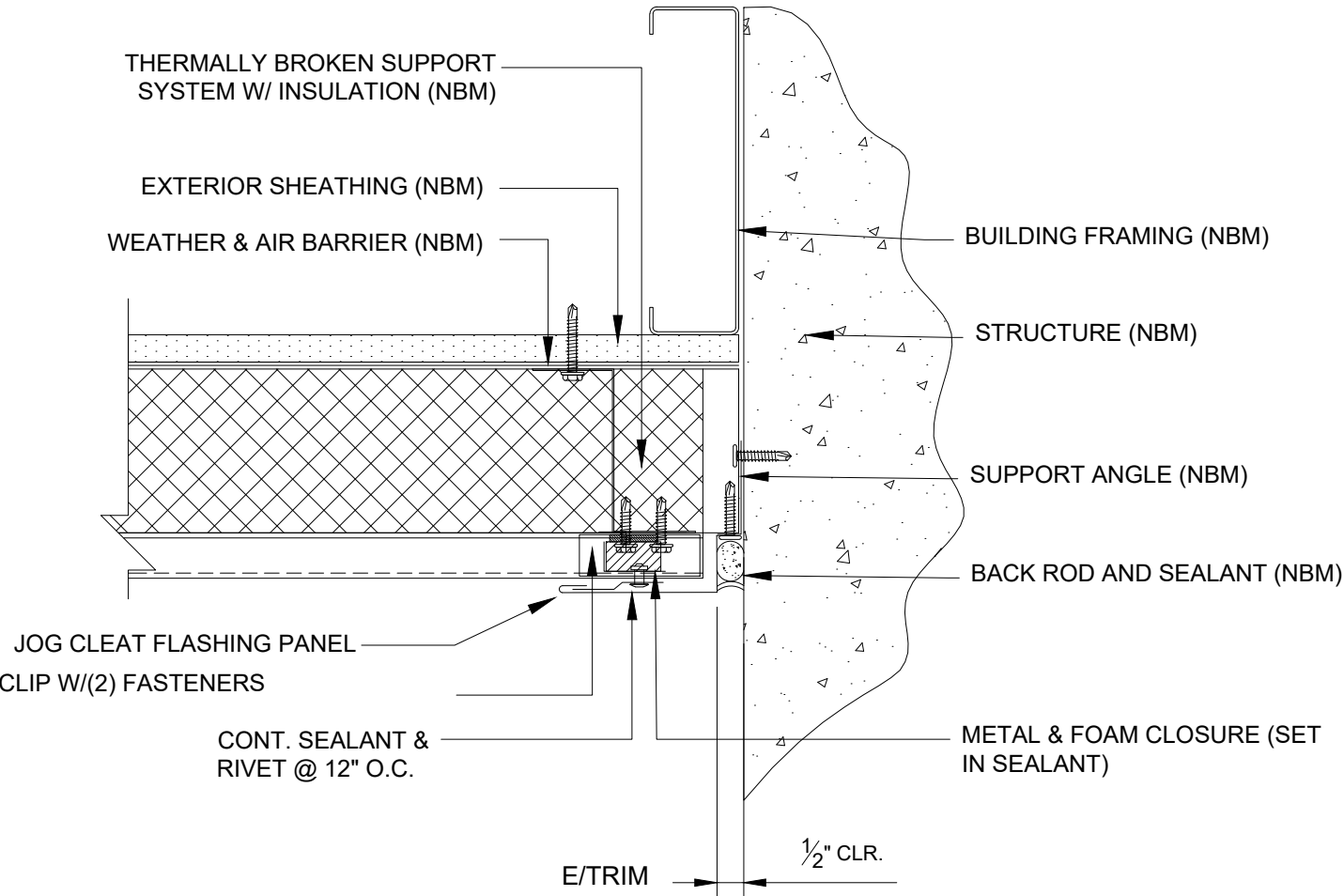


BACK SOFFIT DETAIL

*NBM=(NOT BY MORIN)

Morin Integrity Series

Horizontal Installation

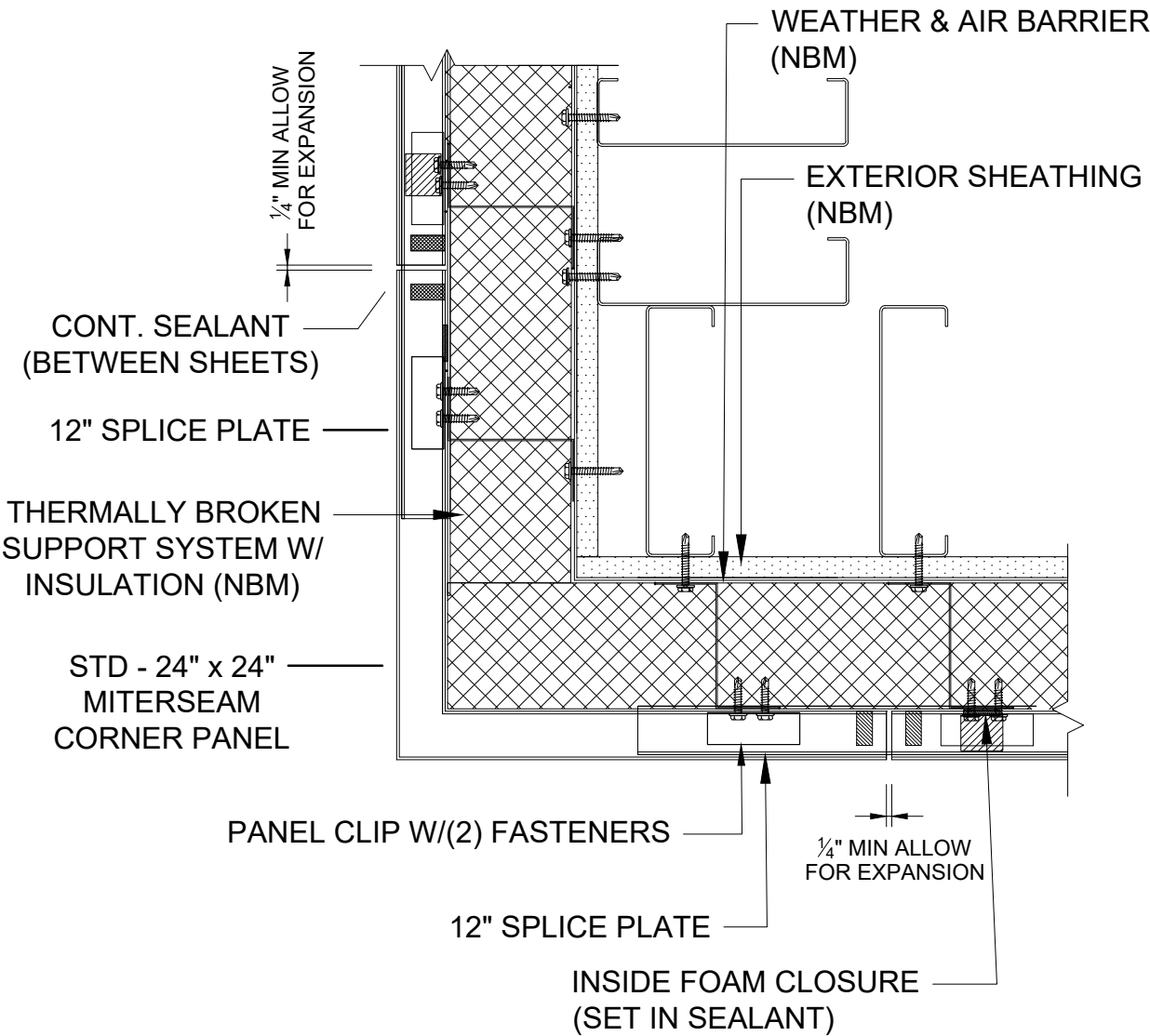


ENDWALL DETAIL

*NBM=(NOT BY MORIN)

Morin Integrity Series

Horizontal Installation



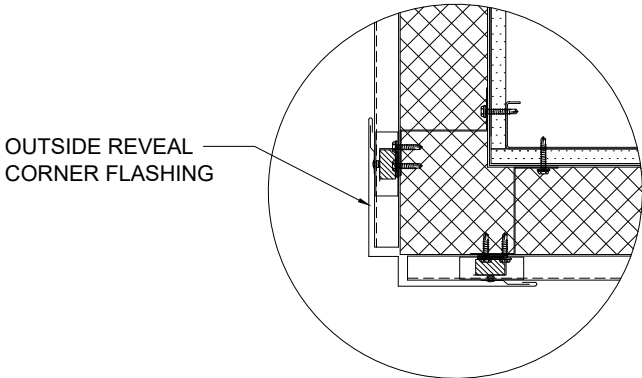
*CORNER TO BE INSTALLED
AT SAME TIME AS PANELS

OUTSIDE CORNER (MITERSEAM) DETAIL

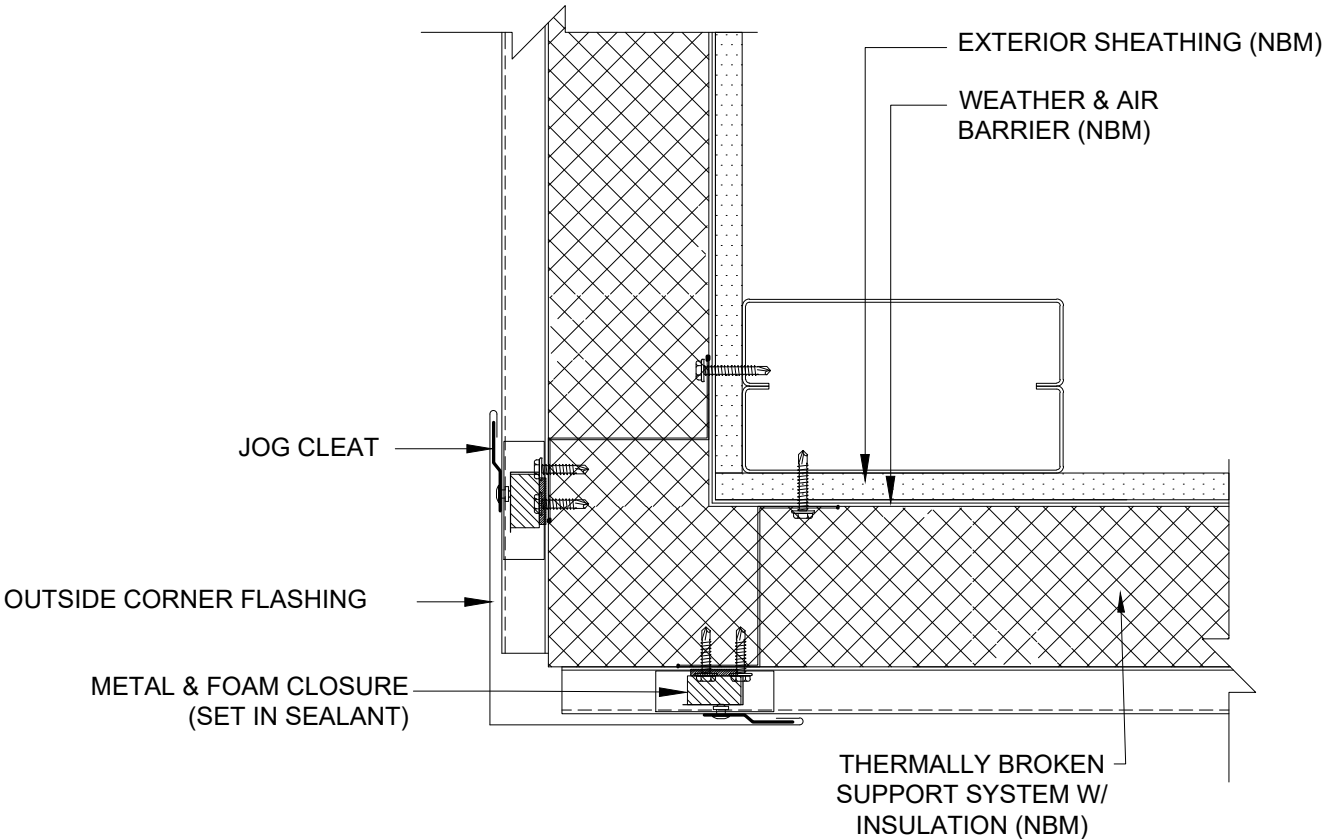
*NBM=(NOT BY MORIN)

Morin Integrity Series

Horizontal Installation



OPTIONAL REVEAL DETAIL



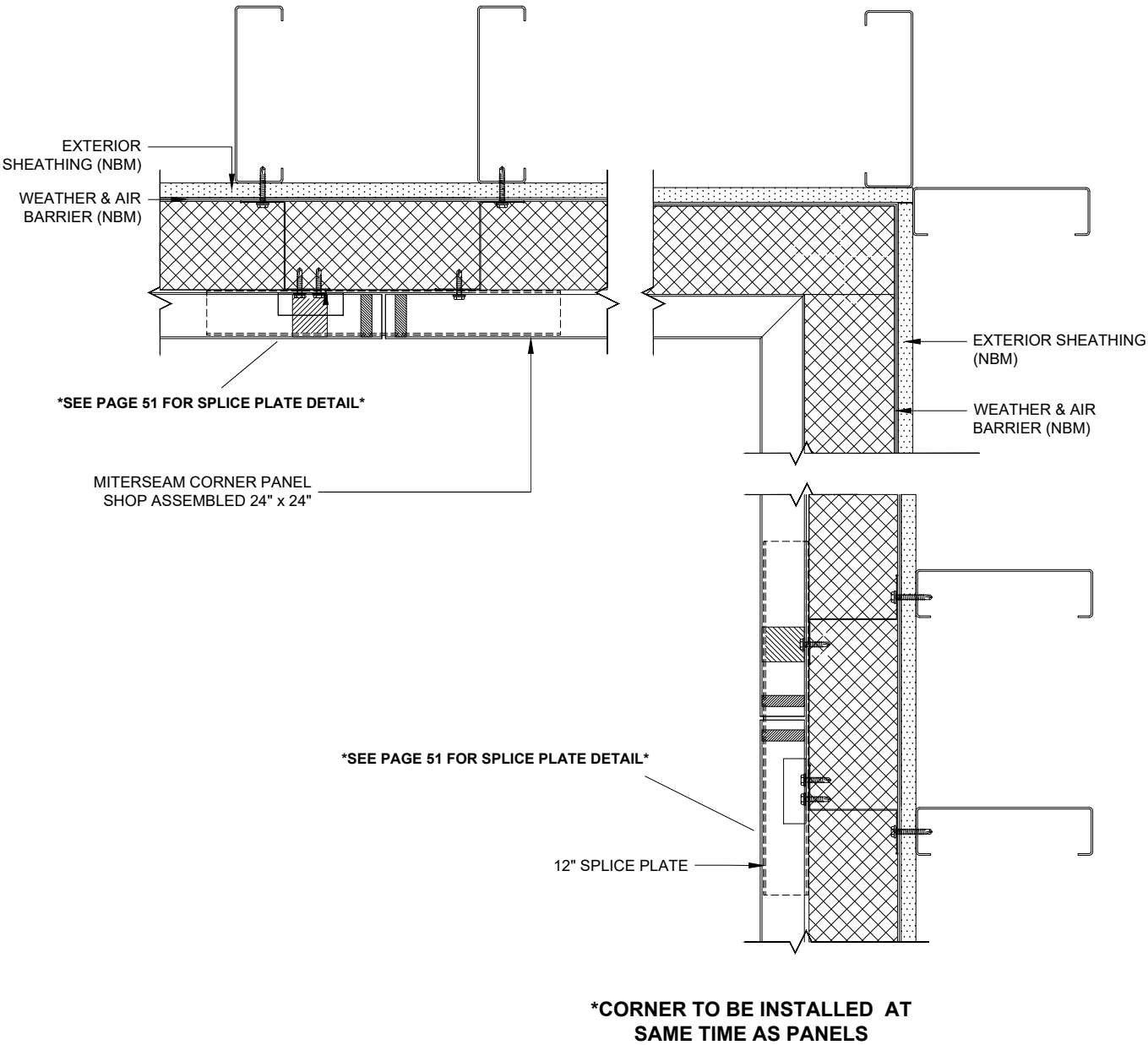
***SEE PAGE 39**

OUTSIDE CORNER DETAIL

*NBM=(NOT BY MORIN)

Morin Integrity Series

Horizontal Installation

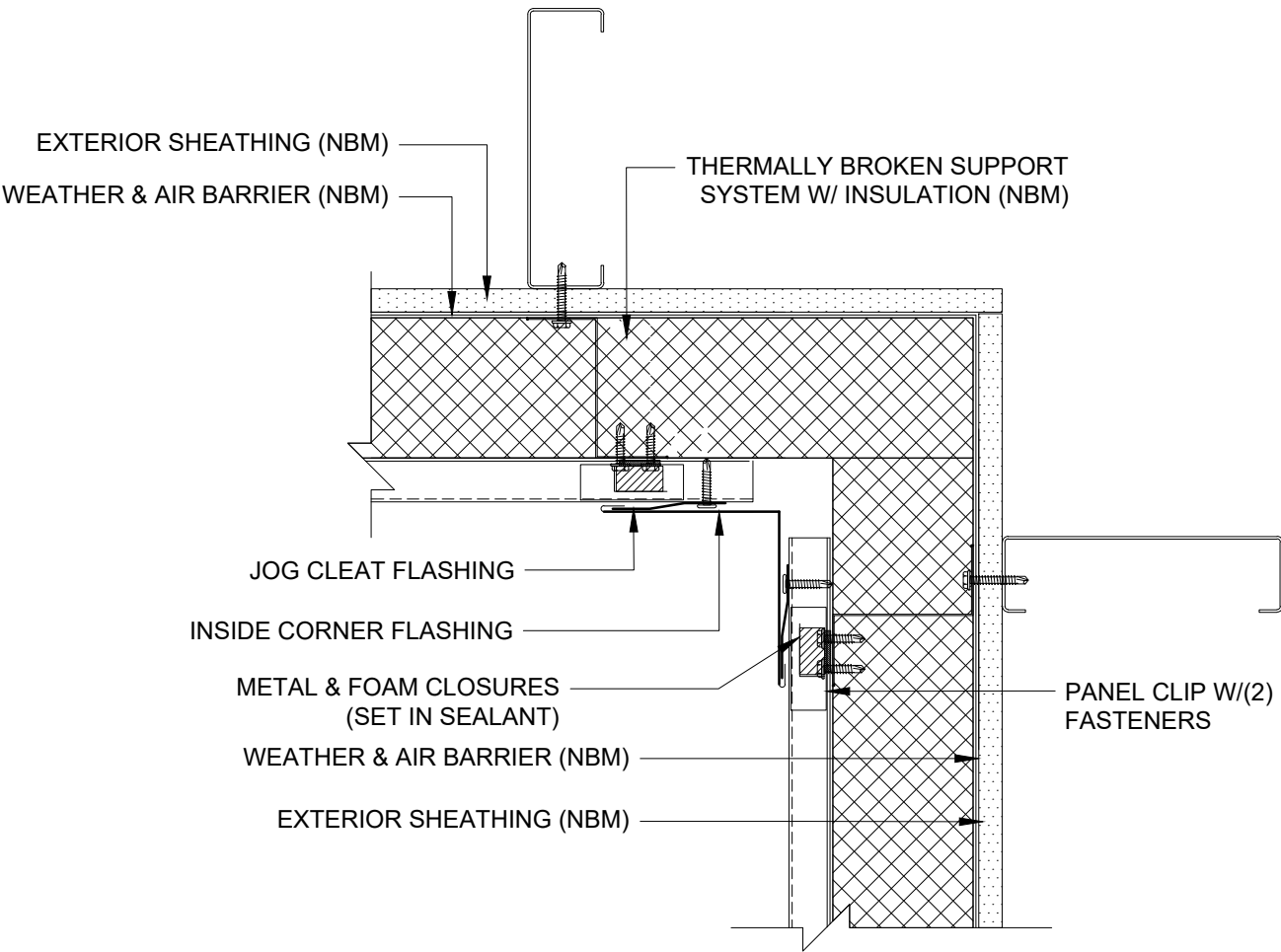


INSIDE CORNER (MITERSEAM) DETAIL

*NBM=(NOT BY MORIN)

Morin Integrity Series

Horizontal Installation



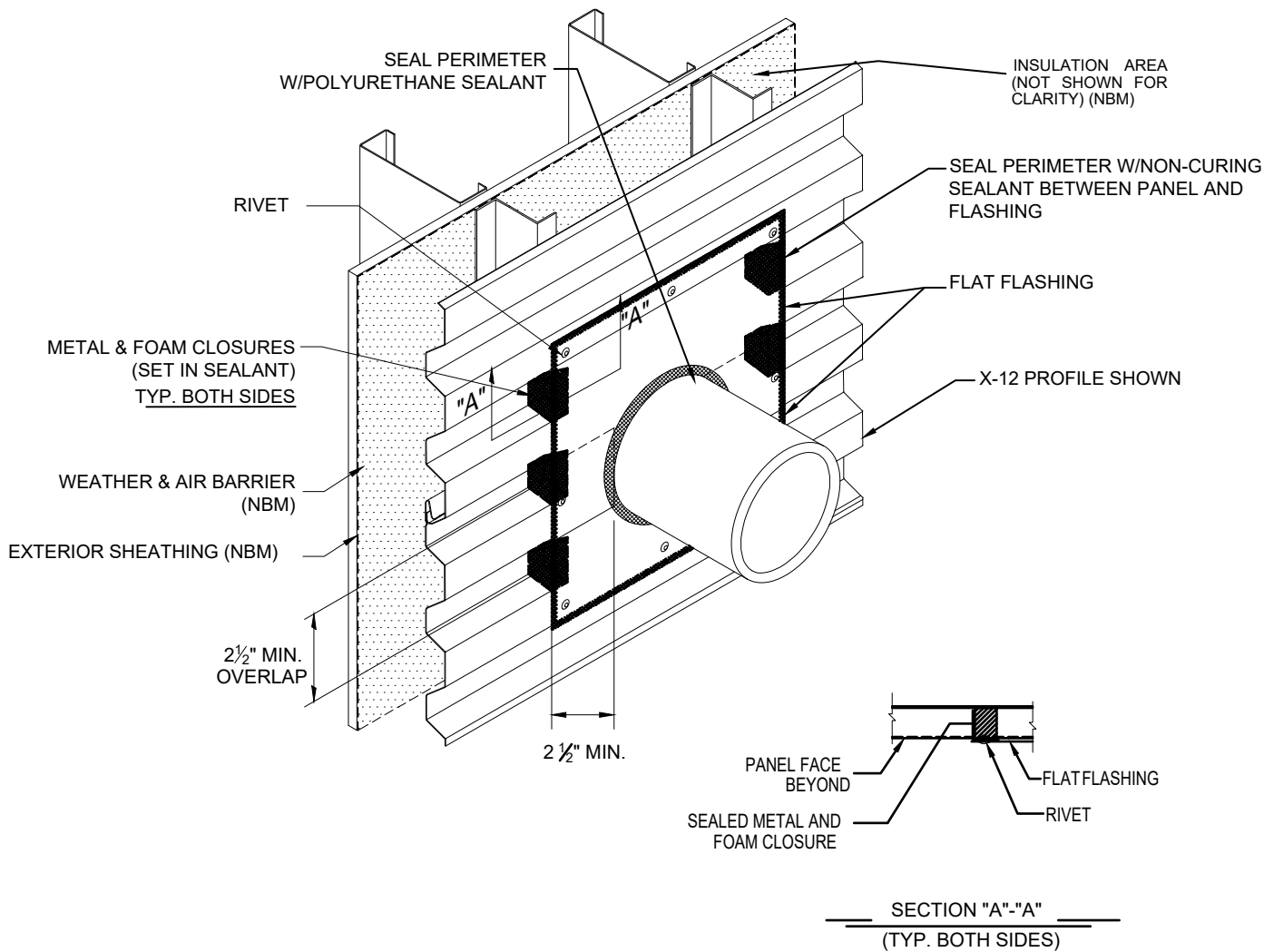
SEE PAGE 39

INSIDE CORNER DETAIL

*NBM=(NOT BY MORIN)

Morin Integrity Series

Horizontal Installation

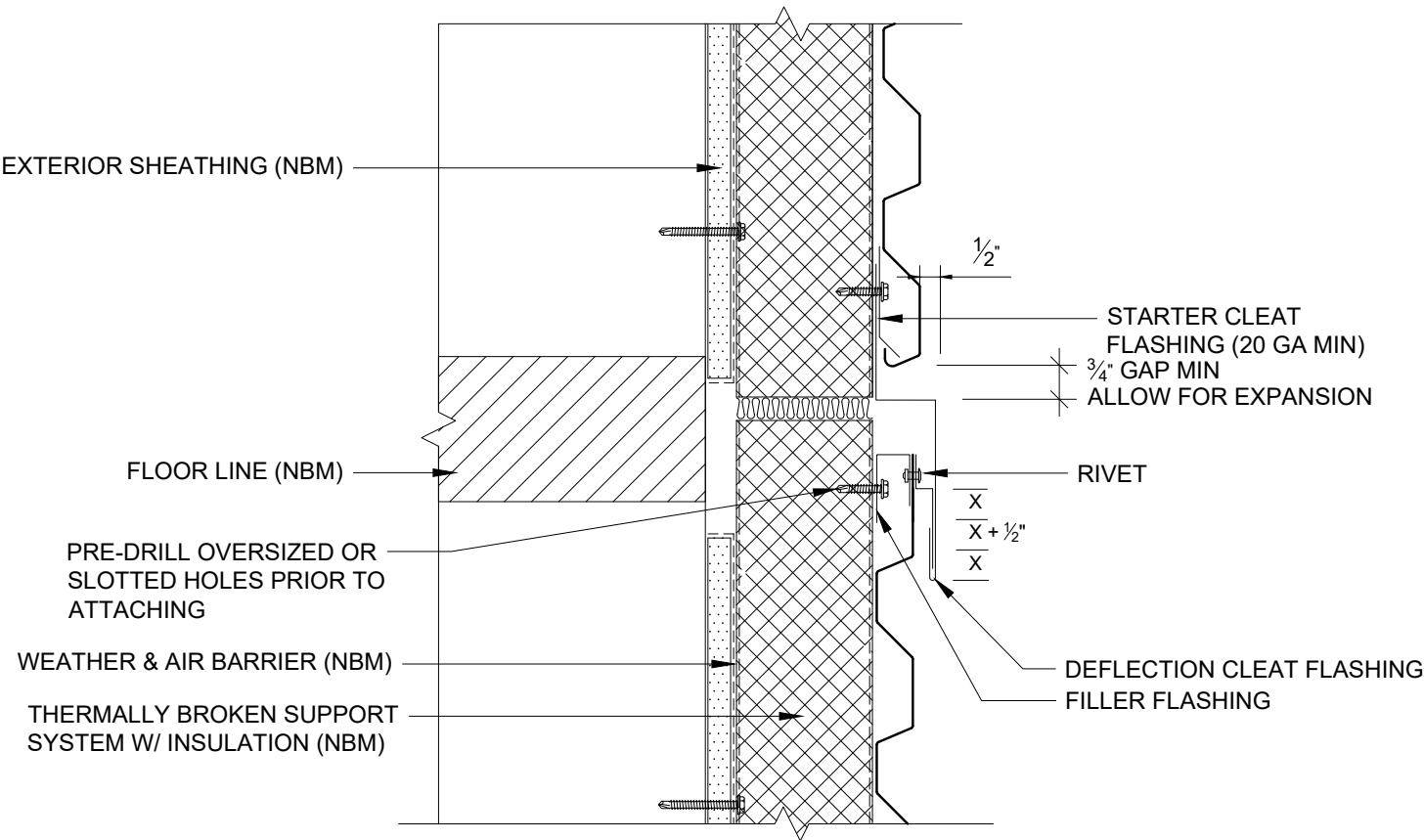


PENETRATION DETAIL

*NBM=(NOT BY MORIN)

Morin Integrity Series

Horizontal Installation



DEFLECTION/FLOOR SHRINKAGE JOINT DETAIL

*NBM=(NOT BY MORIN)

Contact Details

USA

HQ / East

685 Middle Street | Bristol
CT 06010

T: 1-800-640-9501

West

10707 Commerce Way | Fontana
CA 92337

T: 1-800-700-6140

South

1975 Eidson Drive | DeLand
FL 32724

T: 1-800-640-9501

Central

15000 Panatela Parkway | Little Rock
AR 72206

T: 1-800-640-9501

www.morincorp.com



For the latest product information please visit www.morincorp.com

Care has been taken to ensure that the contents of this publication are accurate, but Morin Corporation does not accept responsibility for errors or for information that is found to be misleading. Suggestions for, or description of, the end use or application of products or methods of working are for information only and Morin Corporation accepts no liability in respect thereof.

Morin[®]
By Kingspan