

Metal Wall & Roof Systems
North America



Morin Matrix Series™ Trimless Ends Architectural Metal Wall System Installation Guide

Innovative Single Element Building Envelope Solution



Morin®
By Kingspan

Horizontal Installation

Trimless Ends Profile Options:

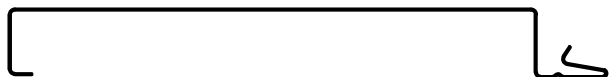
- MX-6
- MX-6-2
- MX-7
- MX-7-2
- MX-8
- MX-8-2

NOTE FOR STAGGERED JOINTS:

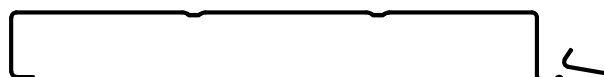
*Finish color is required on both sides of panel if used in a staggered pattern since back is visible at the connection of two panels.

Option: Use touch up paint where needed as opposed to finish color on both sides.

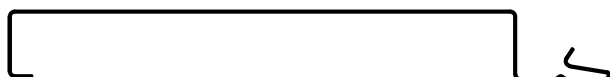
MX-6



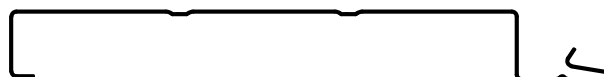
MX-6-2



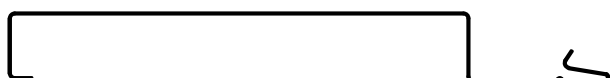
MX-7



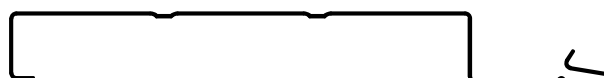
MX-7-2



MX-8



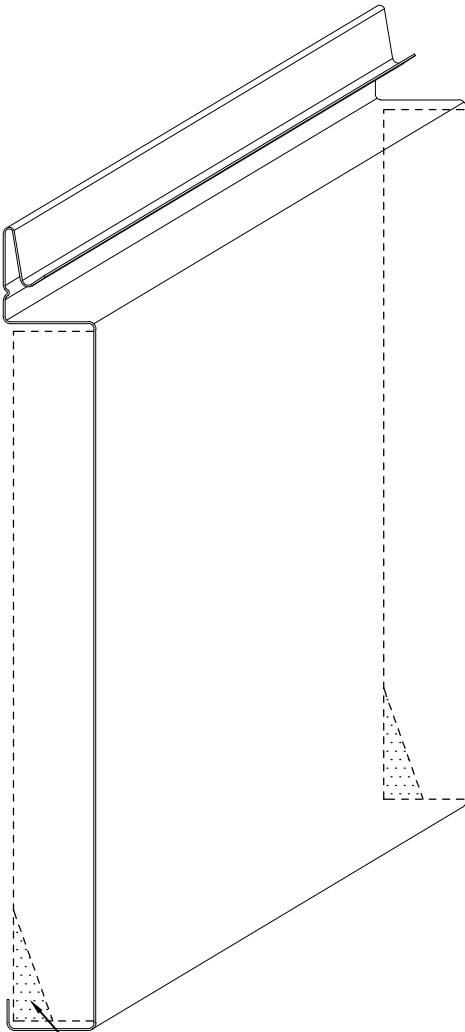
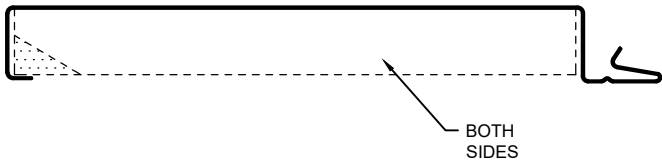
MX-8-2



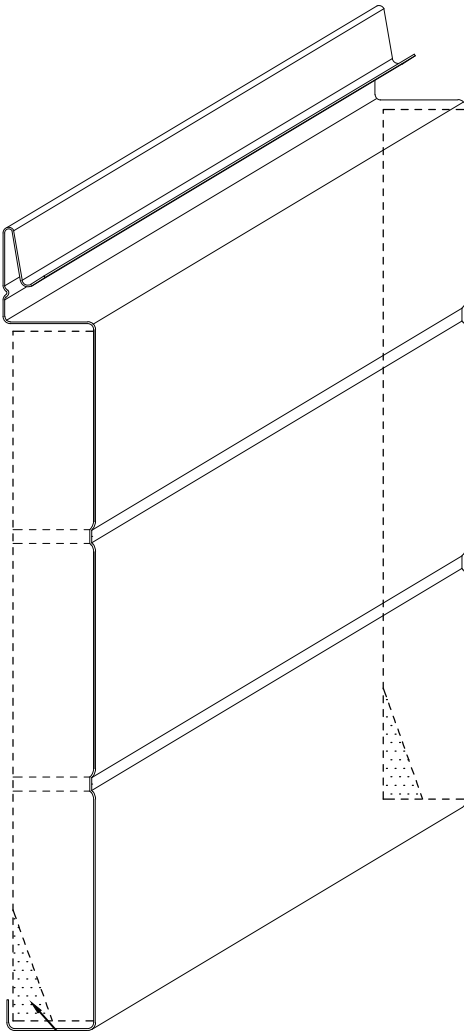
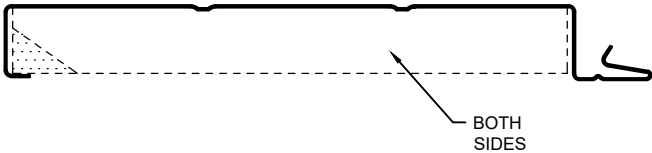
NOTE: REFER TO MORIN INSTALLATION MANUAL FOR ADDITIONAL INFORMATION

Horizontal Installation

MX-6



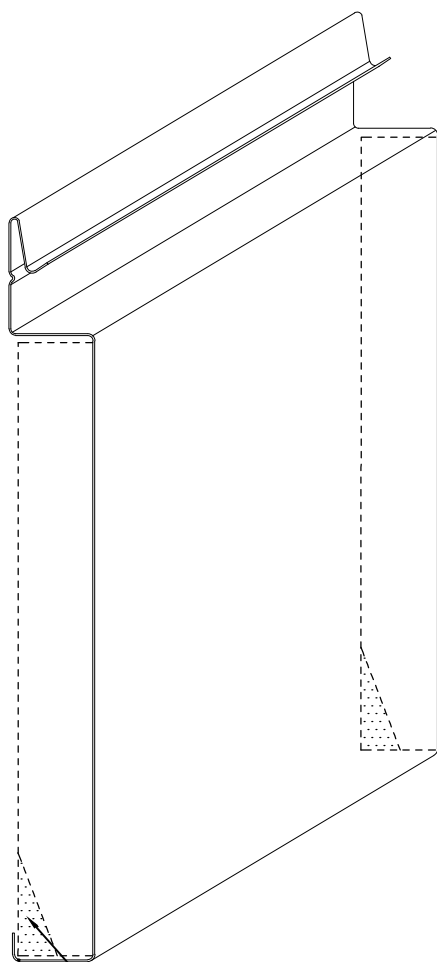
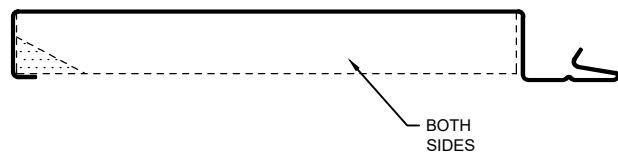
MX-6-2



REFER TO MORIN INSTALLATION MANUAL FOR ADDITIONAL INFORMATION

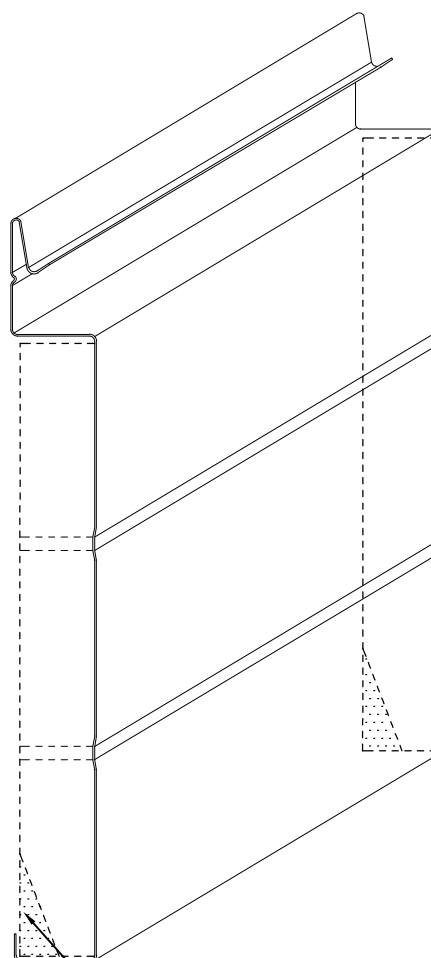
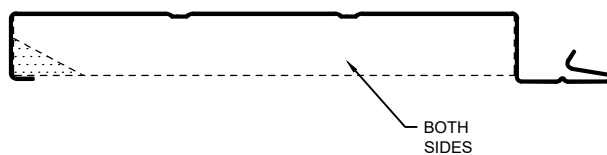
Horizontal Installation

MX-7



IF PANELS ARE STAGGERED THIS
AREA IS TO BE FIELD CUT AND
REMOVED (TYP. BOTH SIDES)

MX-7-2

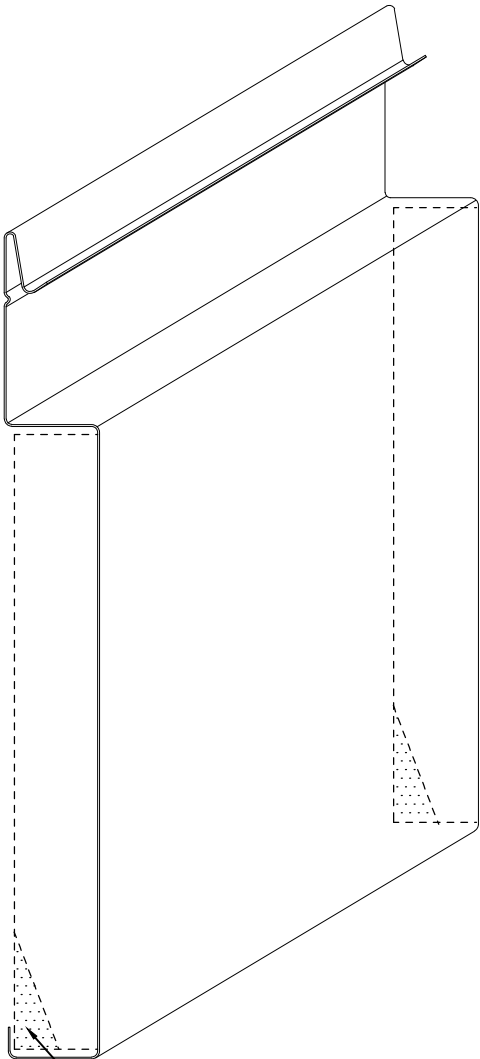
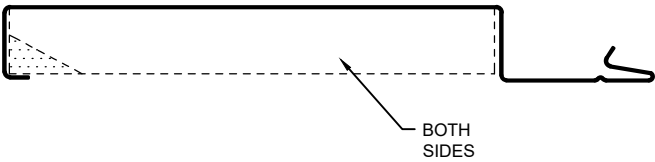


IF PANELS ARE STAGGERED THIS
AREA IS TO BE FIELD CUT AND
REMOVED (TYP. BOTH SIDES)

REFER TO MORIN INSTALLATION MANUAL FOR ADDITIONAL INFORMATION

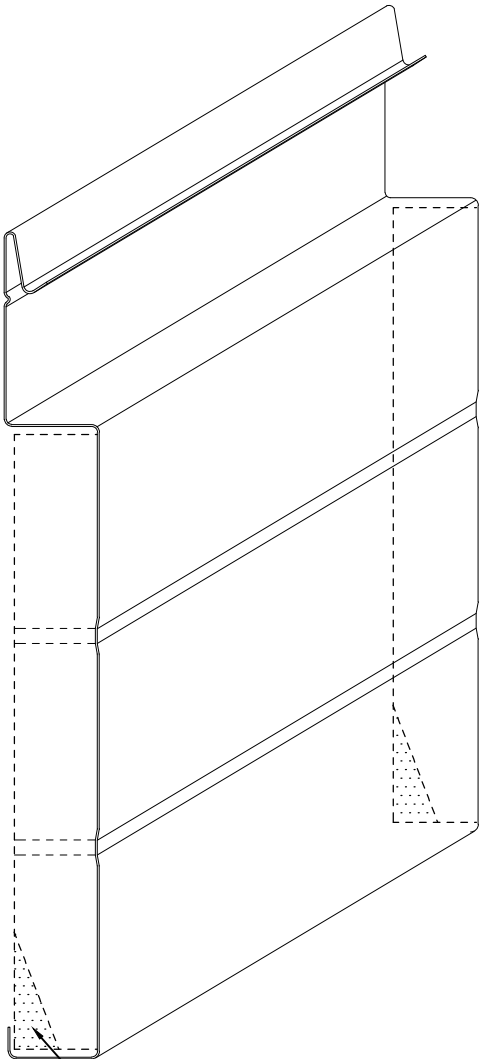
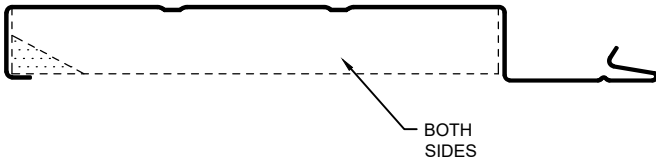
Horizontal Installation

MX-8



IF PANELS ARE STAGGERED THIS
AREA IS TO BE FIELD CUT AND
REMOVED (TYP. BOTH SIDES)

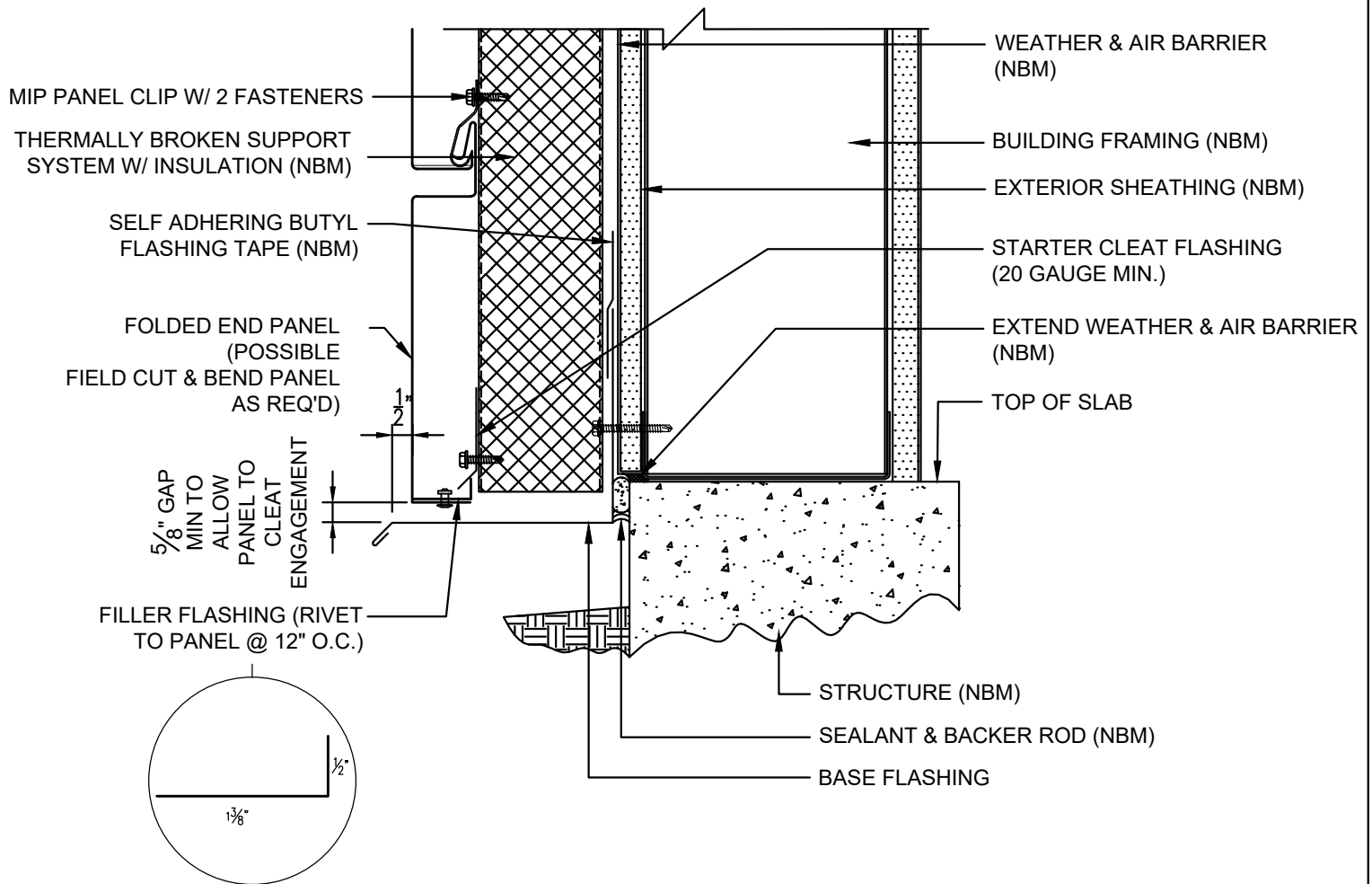
MX-8-2



IF PANELS ARE STAGGERED THIS
AREA IS TO BE FIELD CUT AND
REMOVED (TYP. BOTH SIDES)

REFER TO MORIN INSTALLATION MANUAL FOR ADDITIONAL INFORMATION

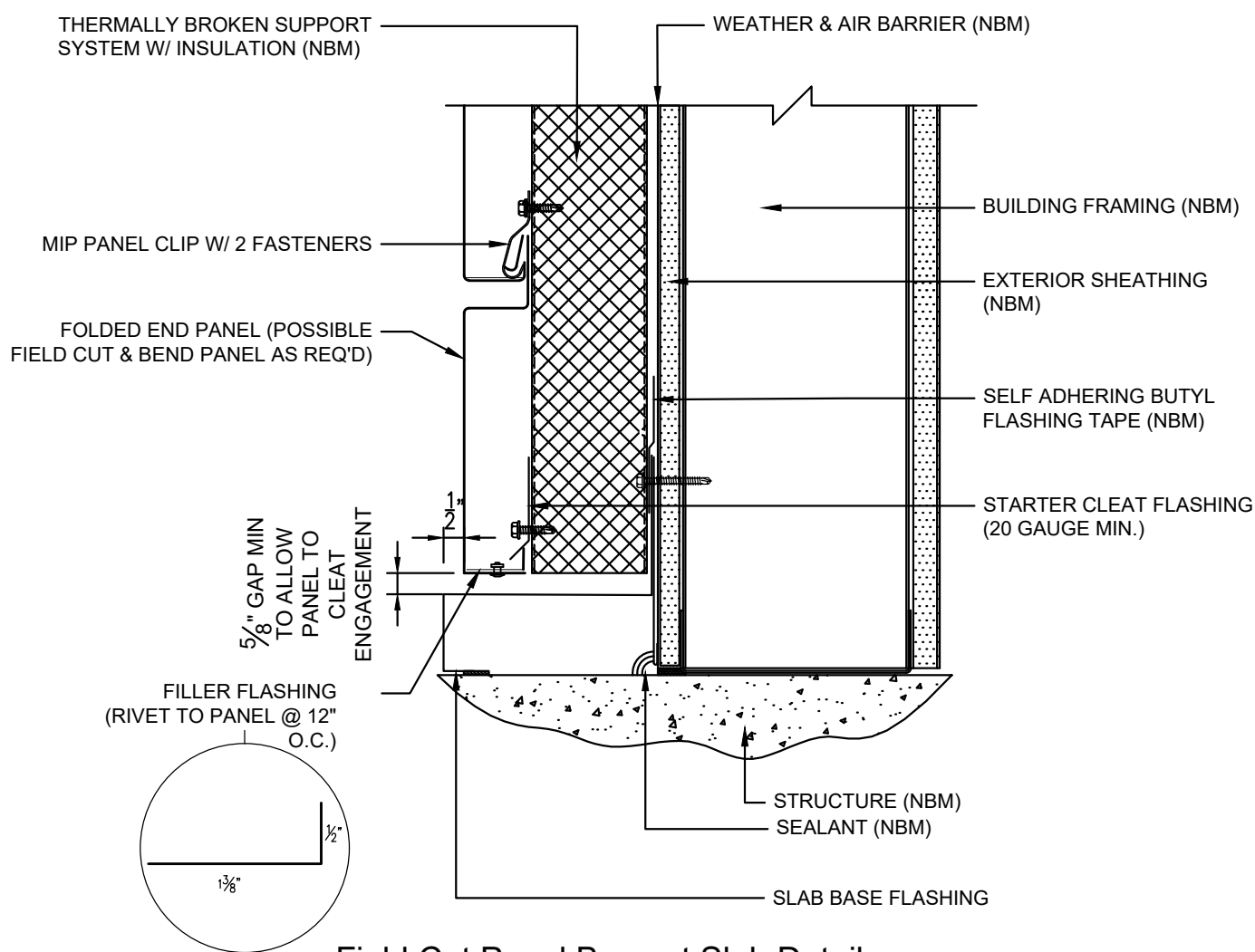
Horizontal Installation



Field Cut Panel Base at Curb or Edge of Slab Detail

NOTE: (NBM) = NOT BY MORIN
REFER TO MORIN INSTALLATION MANUAL FOR ADDITIONAL INFORMATION

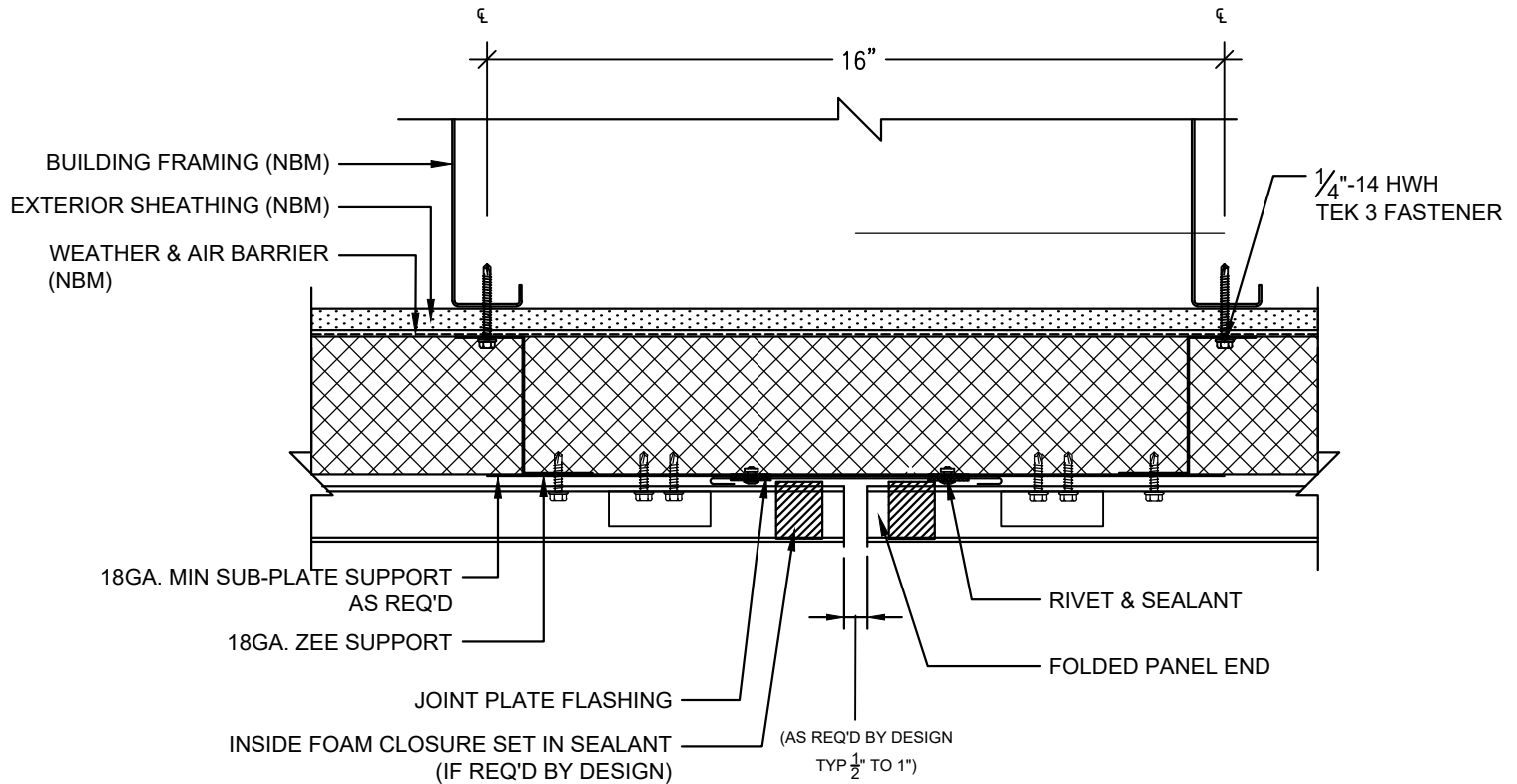
Horizontal Installation



Field Cut Panel Base at Slab Detail

NOTE: (NBM) = NOT BY MORIN
REFER TO MORIN INSTALLATION MANUAL FOR ADDITIONAL INFORMATION

Horizontal Installation

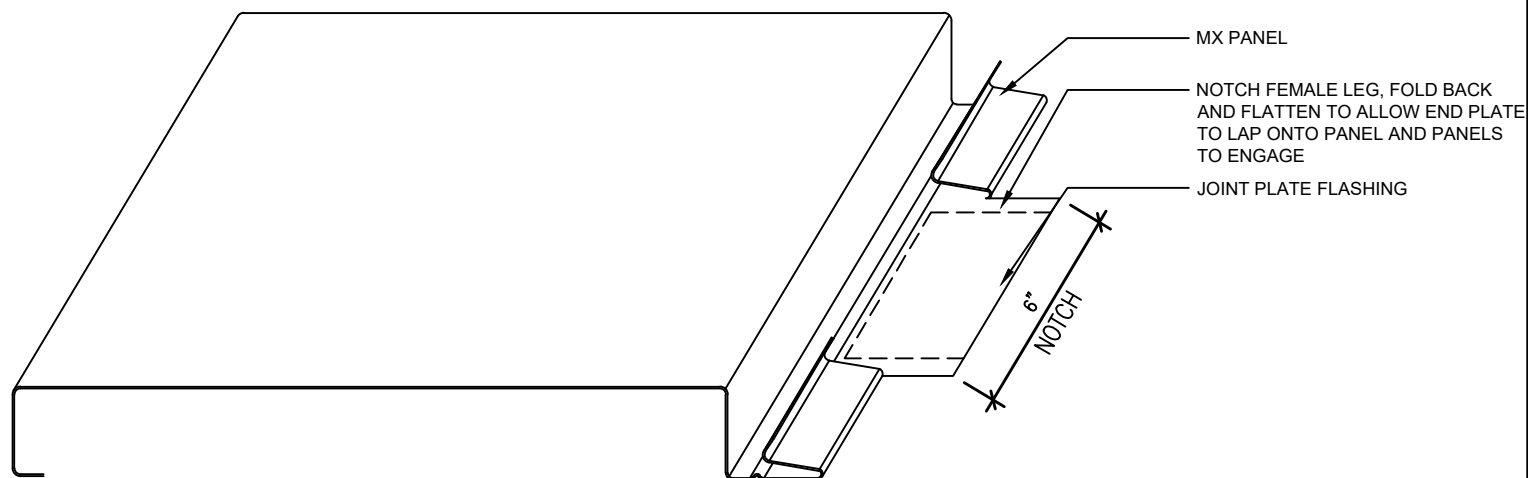


Joint Detail

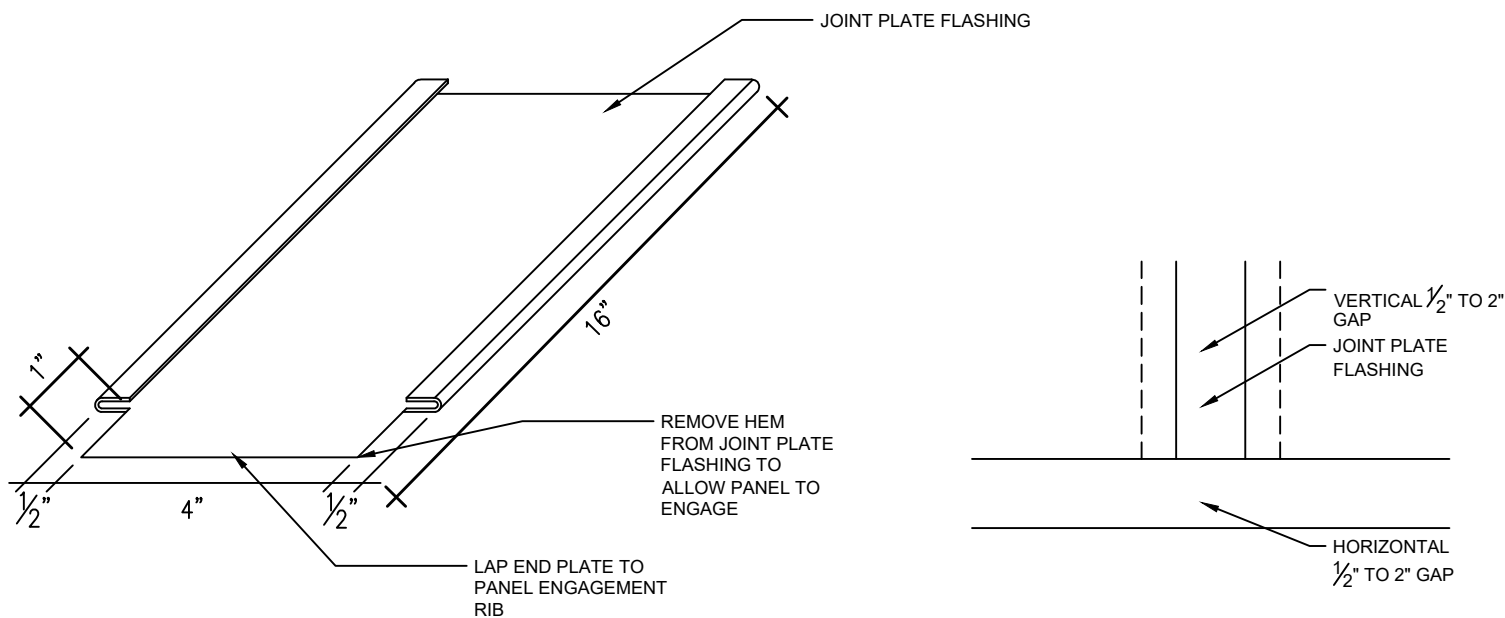
NOTE:
THIS DETAIL CAN BE USED
FOR STRAIGHT JOINT DETAIL
OR STAGGERED JOINT
DETAIL (SEE NEXT PAGE
FOR MORE INFO).

NOTE: (NBM) = NOT BY MORIN
REFER TO MORIN INSTALLATION MANUAL FOR ADDITIONAL INFORMATION

Horizontal Installation



ADJUSTMENT OF PANEL

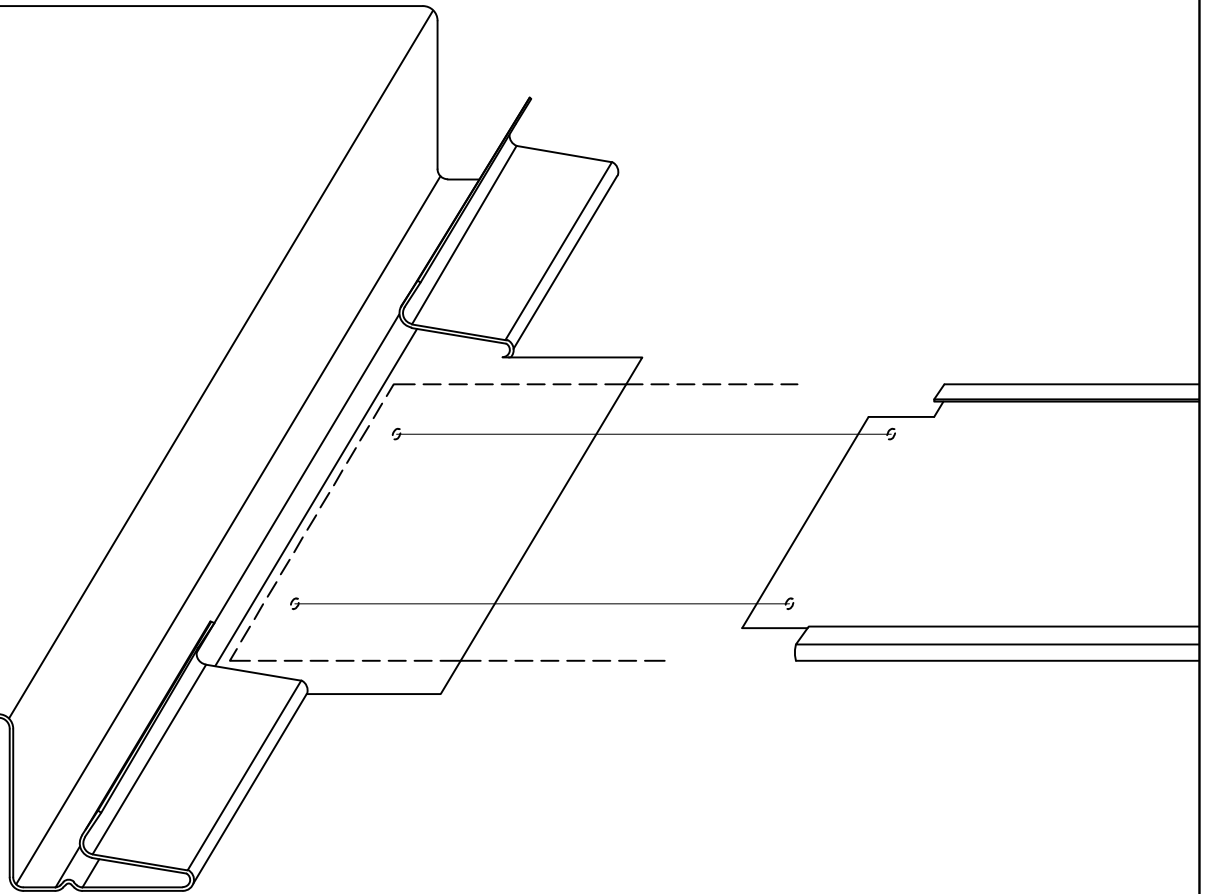


JOINT PLATE FLASHING

Staggered Joint Detail

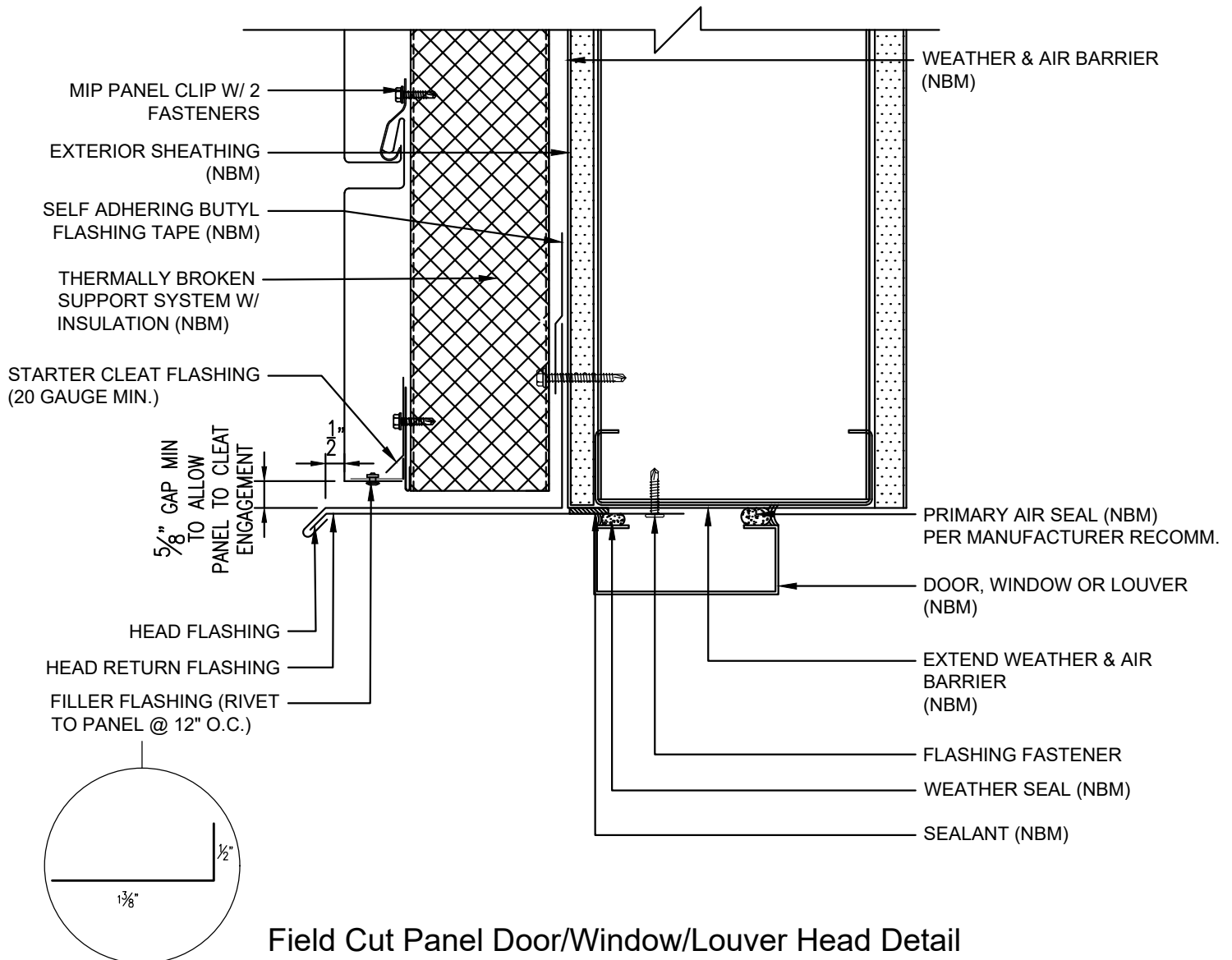
*SEE NEXT PAGE FOR ADDITIONAL
INFORMATION

Horizontal Installation



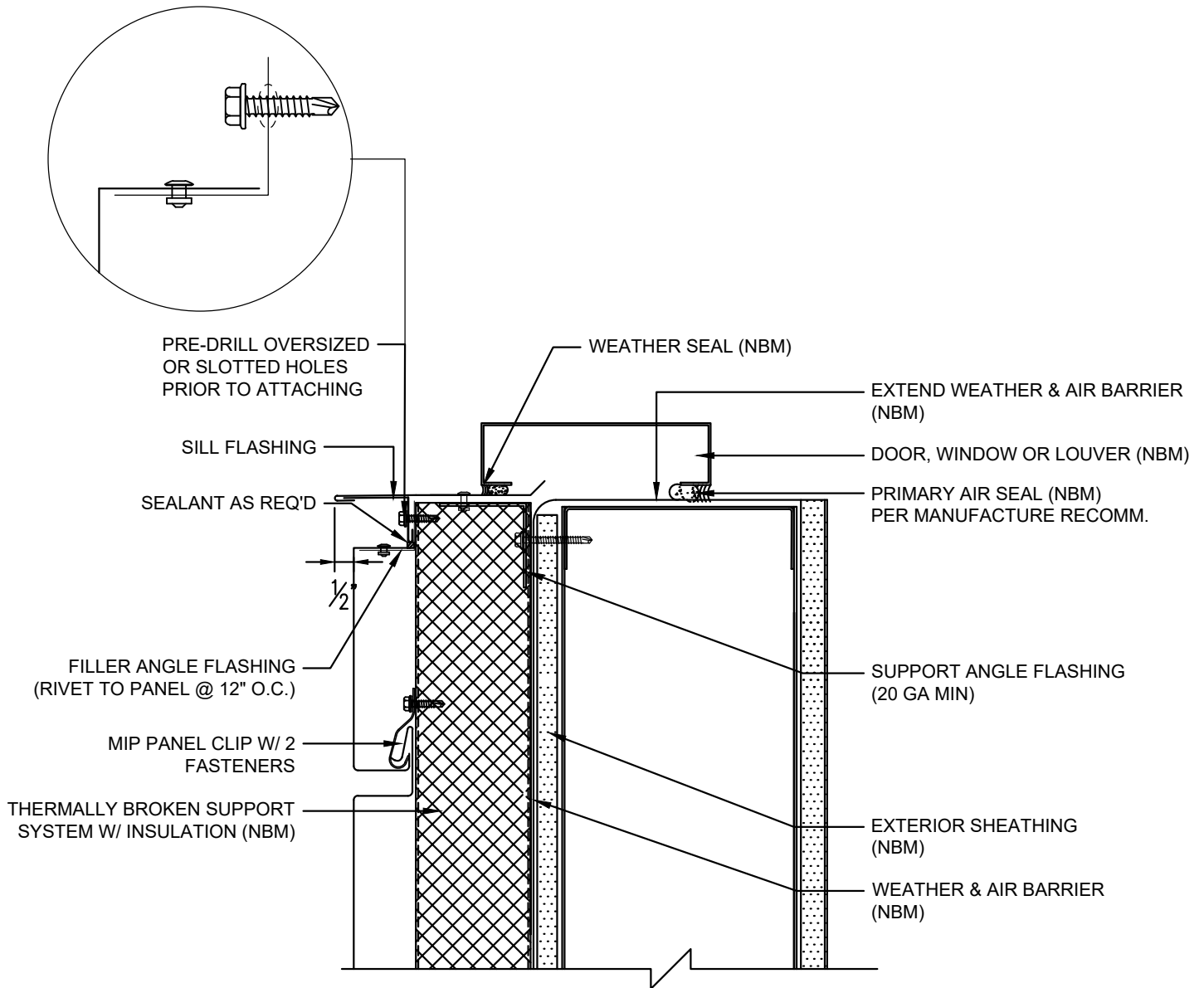
INSTALLATION OF JOINT PLATE FLASHING

Horizontal Installation



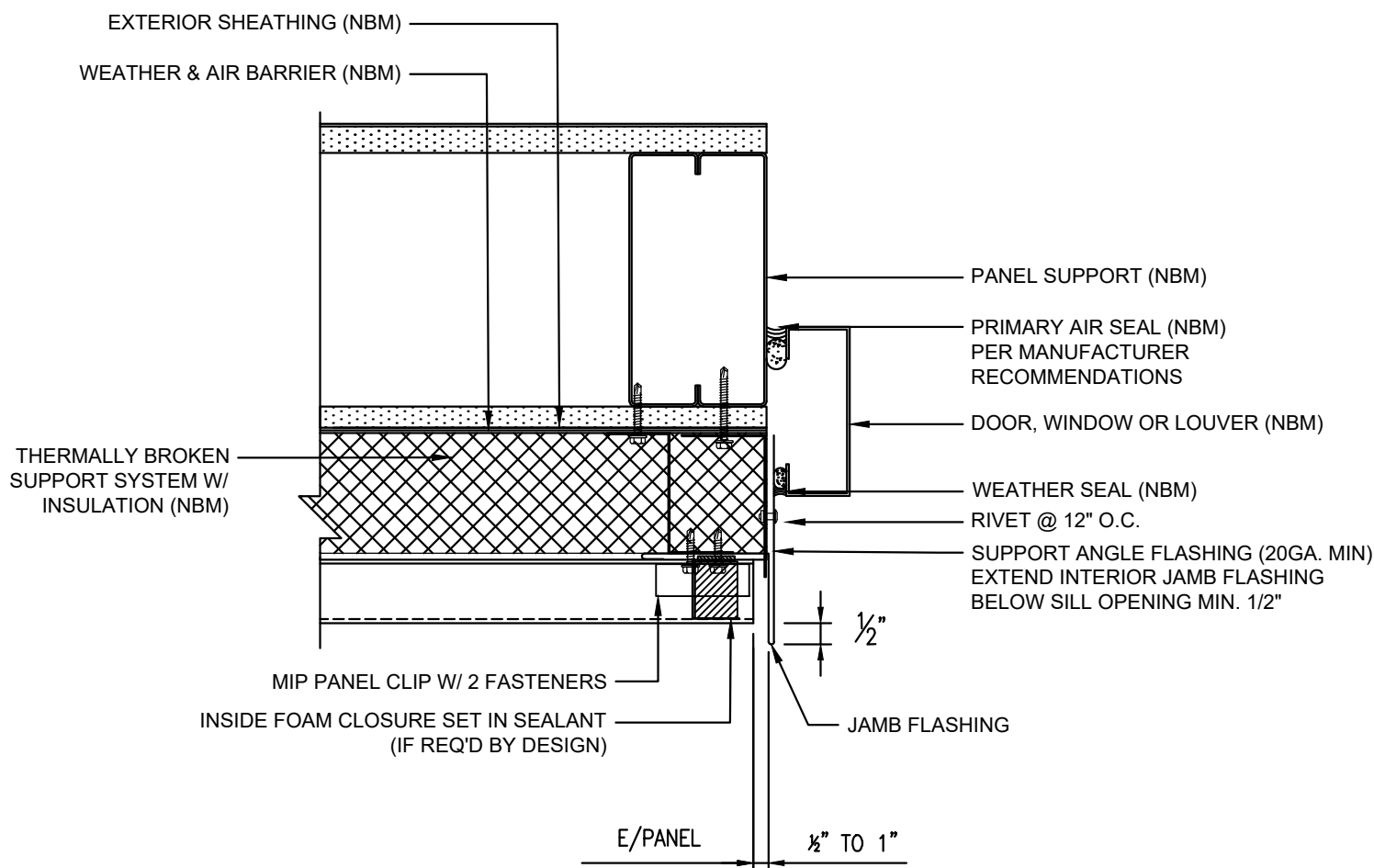
NOTE: (NBM) = NOT BY MORIN
REFER TO MORIN INSTALLATION MANUAL FOR ADDITIONAL INFORMATION

Horizontal Installation



NOTE: (NBM) = NOT BY MORIN
REFER TO MORIN INSTALLATION MANUAL FOR ADDITIONAL INFORMATION

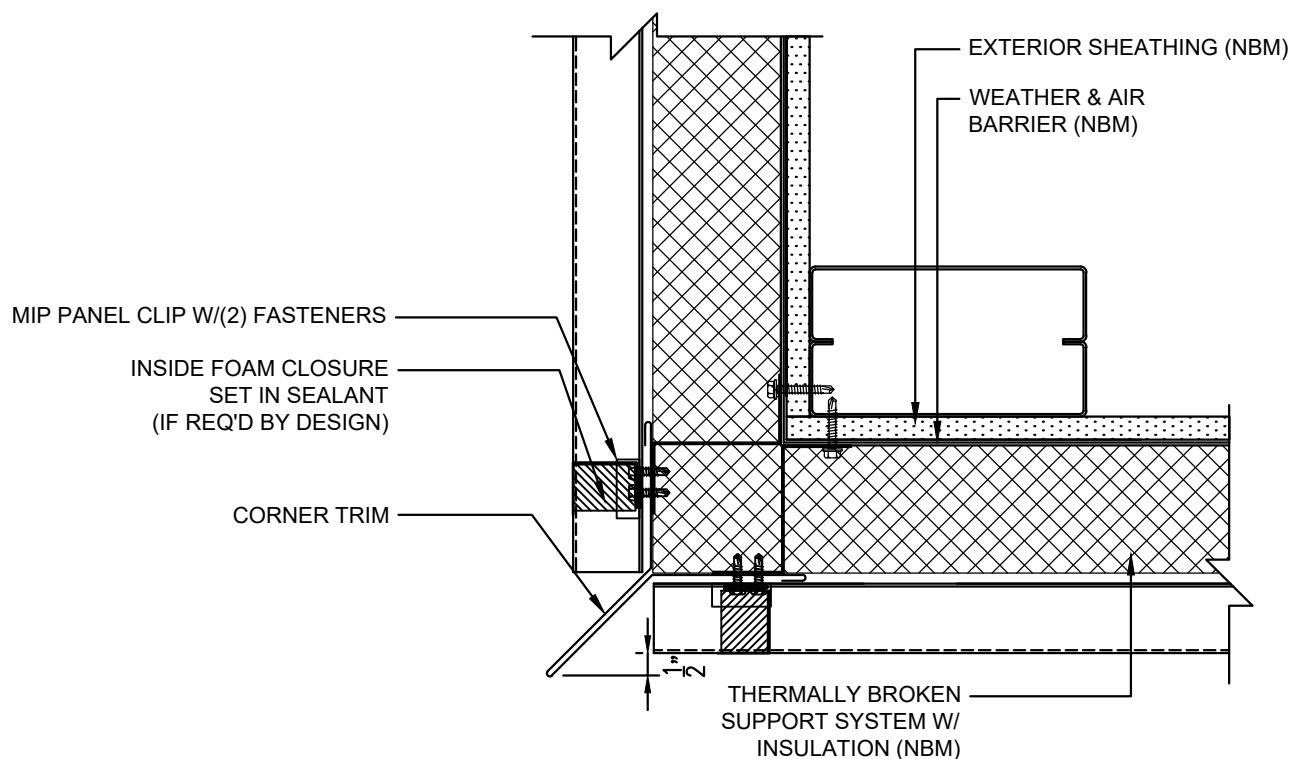
Horizontal Installation



Door/Window/Louver Jamb Detail

NOTE: (NBM) = NOT BY MORIN
REFER TO MORIN INSTALLATION MANUAL FOR ADDITIONAL INFORMATION

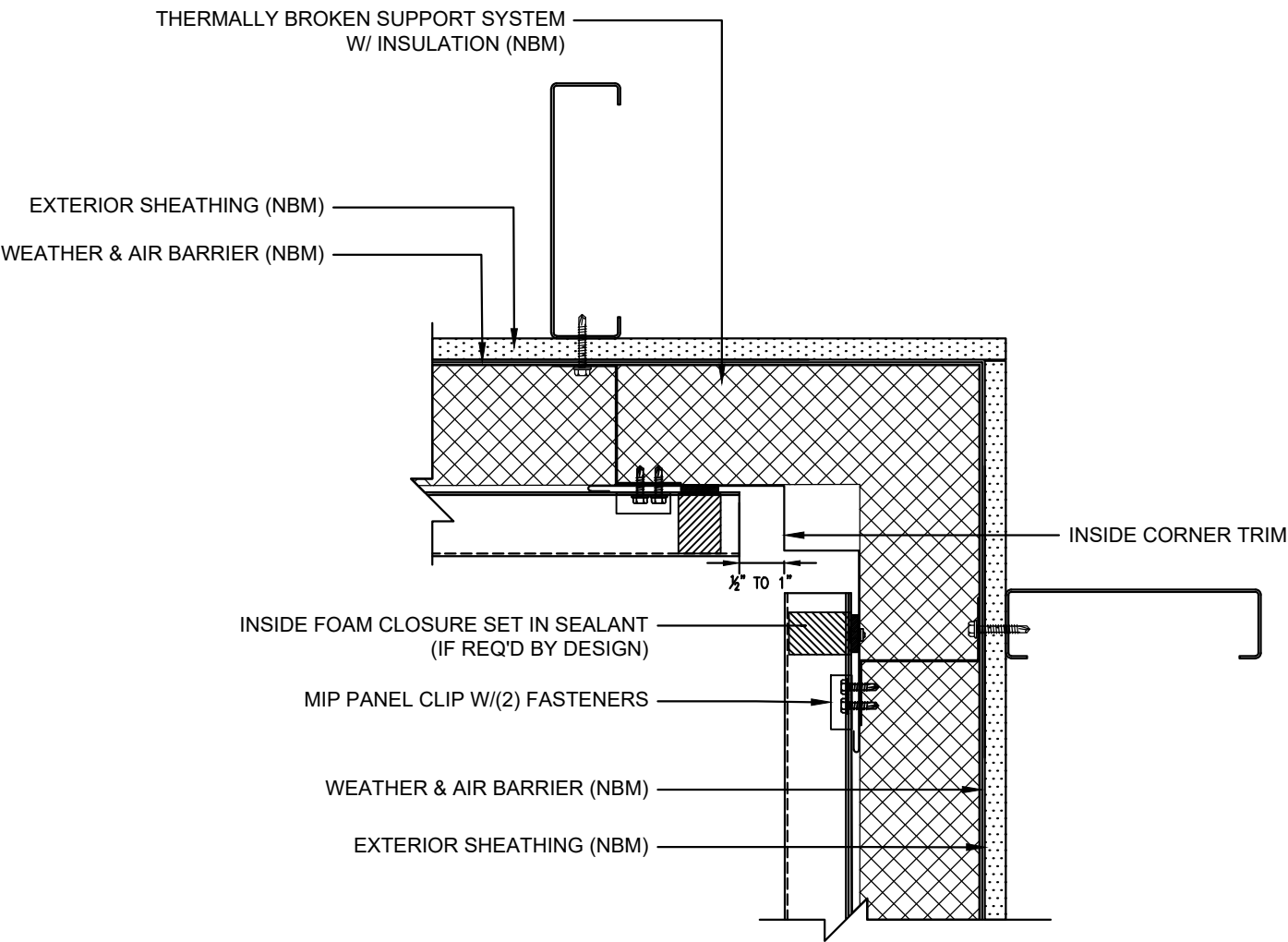
Horizontal Installation



Outside Corner Detail

NOTE: (NBM) = NOT BY MORIN
REFER TO MORIN INSTALLATION MANUAL FOR ADDITIONAL INFORMATION

Horizontal Installation



Inside Corner Detail

NOTE: (NBM) = NOT BY MORIN
REFER TO MORIN INSTALLATION MANUAL FOR ADDITIONAL INFORMATION

Contact Details

USA

HQ / East

685 Middle Street | Bristol
CT 06010

T: 1-800-640-9501

West

10707 Commerce Way | Fontana
CA 92337

T: 1-800-700-6140

South

1975 Eidson Drive | DeLand
FL 32724

T: 1-800-640-9501

Central

15000 Panatela Parkway | Little Rock
AR 72206

T: 1-800-640-9501

www.morincorp.com



For the latest product information please visit www.morincorp.com

Care has been taken to ensure that the contents of this publication are accurate, but Morin Corporation does not accept responsibility for errors or for information that is found to be misleading. Suggestions for, or description of, the end use or application of products or methods of working are for information only and Morin Corporation accepts no liability in respect thereof.

Morin[®]
By Kingspan