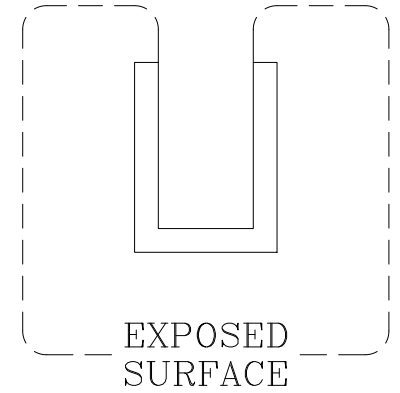
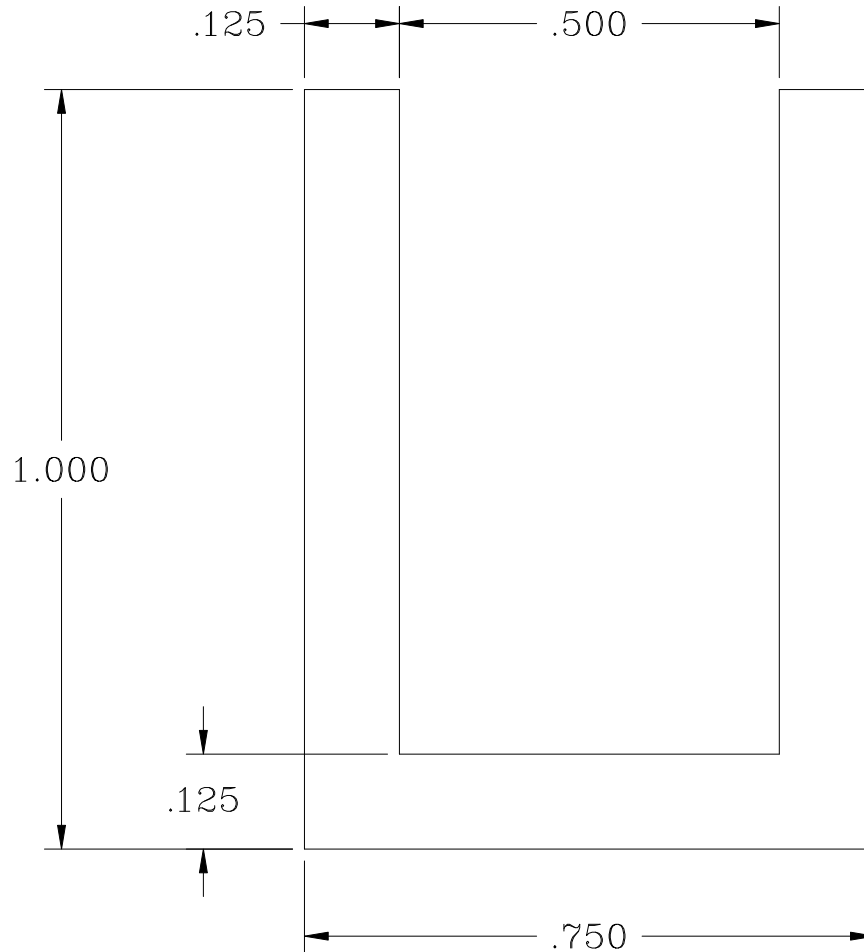


NOTES:



**MORSE**  
INDUSTRIES  
Working Solutions in Aluminum, Plastics and Stainless Steel

DR BY: ADAM FINCH	8/27/03	PART NUMBER: A40-1100
CUT LENGTH	12' & 16'	DESCRIPTION:
FINISH		UNSPECIFIED CORNERS: 0.007
AREA: 0.3125 INCH <sup>2</sup>	WPF: 0.367 LB	ALLOY: 6063-T5 WALL: 0.125

±1/64	FRACTION
	X.X
±0.1600	X.XX
±0.0160	X.XXX
±0.0005	X.XXXX
SUBTRACT 5 PTS. FOR EACH UNIT OF TOL. ANGLE ±1°	

Telephone: (253) 852-1399  
Fax: (253) 520-9972  
www.morseindustries.com