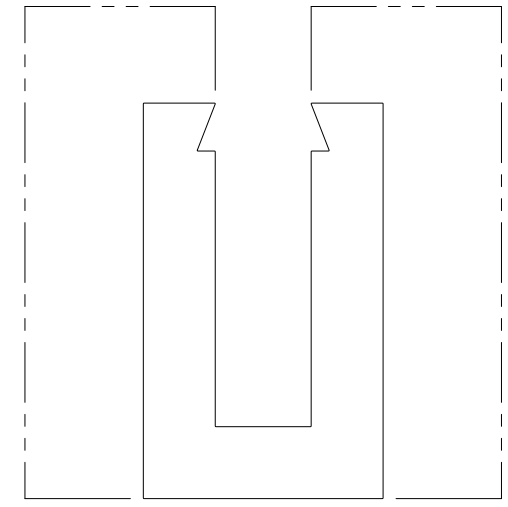
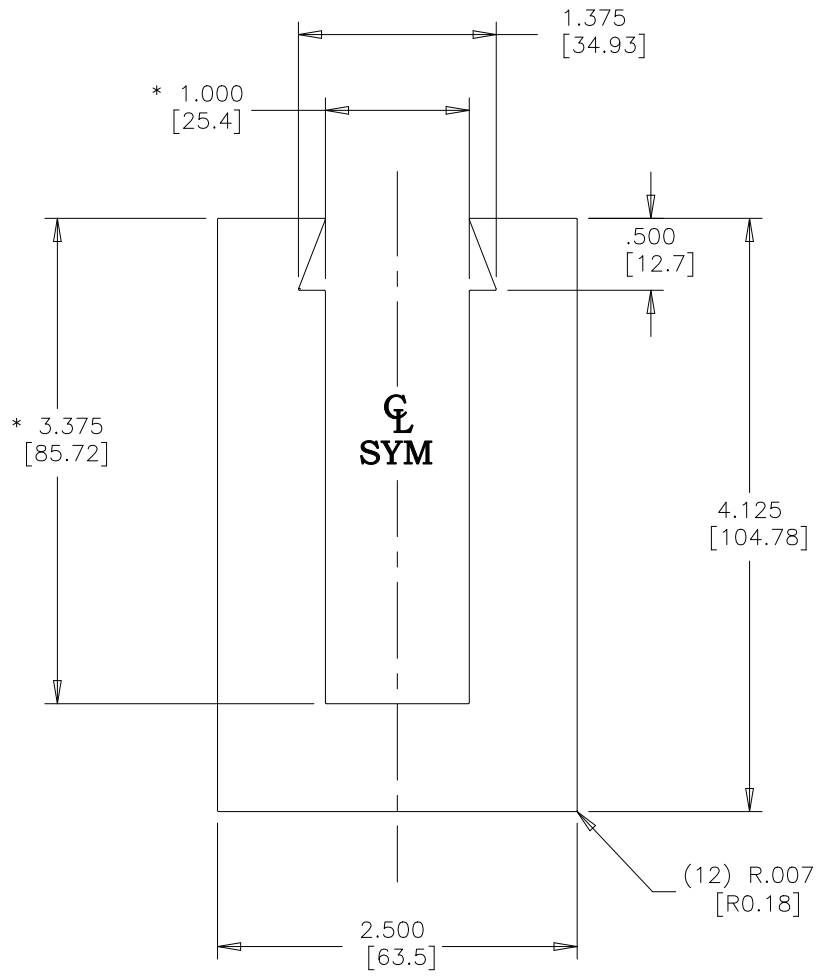


- Notes: 1. Dimensions Typical, Where Applicable  
 2. \* Denotes Critical Dimension

Rev	Date	Int	Description
.	.	.	.



Exposed Surfaces  
 Scale 1 : 2

**A42-0090**

**Units Of Tolerance : IN**

Angular:	± .....	1°
Fractional:	± ....	1/64
Decimal:		
0.000 - 0.124 ± ....		0.007
0.125 - 0.249 ± ....		0.008
0.250 - 0.499 ± ....		0.009
0.500 - 0.749 ± ....		0.010
0.750 - 0.999 ± ....		0.012
1.000 - 1.499 ± ....		0.014
1.500 - 1.999 ± ....		0.015
2.000 - 3.999 ± ....		0.025
4.000 - 6.000 ± ....		0.035
> 6.000 ± ....		0.050

<b>Unspecified:</b> Radius: ..... 0.000 Wall: ..... 0.750	<b>PROPRIETARY &amp; CONFIDENTIAL:</b> THE INFORMATION CONTAINED IN THIS DRAWING IS THE SOLE PROPERTY OF MORSE INDUSTRIES. ANY REPRODUCTION IN PART OR AS A WHOLE WITHOUT THE WRITTEN PERMISSION OF MORSE INDUSTRIES IS PROHIBITED. ALL RIGHTS RESERVED.	<b>Title:</b> Extruded Base Shoe		<b>Fits To:</b>	
		<b>Material:</b> Aluminum	<b>Grade:</b> 6063	<b>Temper:</b> T 5	
<b>Scale:</b> 3 : 4		<b>Finishes:</b> Mill 5 (AEY)		<b>Engineer:</b> G.J. Worthy	
<b>Plot Size:</b> A		<b>Cut Lengths:</b> (144") 12.000' ± .000" (240") 20.000' ± .000"		<b>Date:</b> 09/16/2005	
<b>Sheet:</b> 1 of 1		<b>Per.</b> 20.409 in	<b>Total Per.</b> 20.409 in	<b>Area:</b> 6.8437 in <sup>2</sup>	<b>Weight:</b> 8.0482 lb/ft

**MORSE INDUSTRIES**  
 Working Solutions in Aluminum, Plastics and Stainless Steel

Telephone: (800) 325-7513  
 Fax: (800) 411-8226  
 www.morseindustries.com