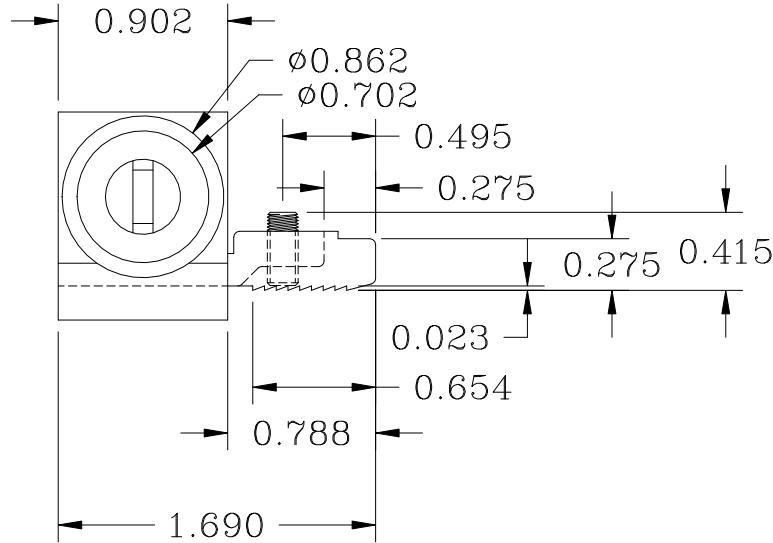
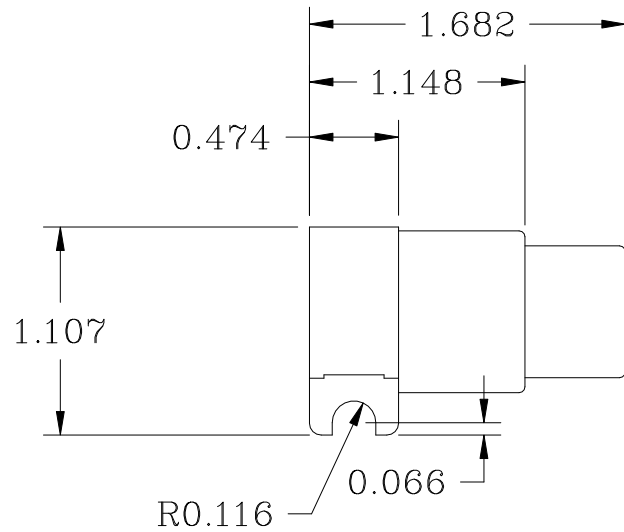
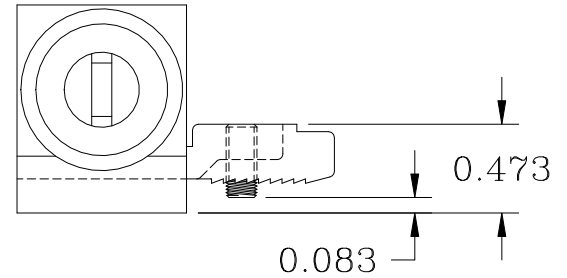
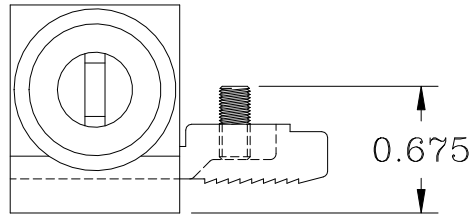
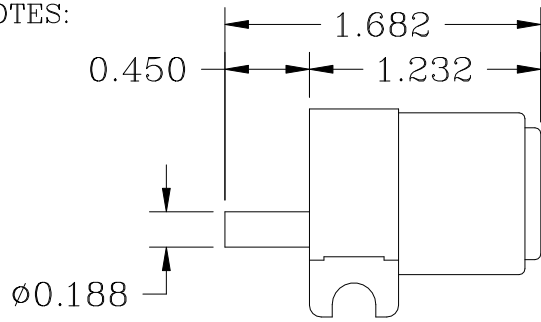


NOTES:



Telephone: (253) 852-1399  
 Fax: (253) 520-9972  
 www.morseindustries.com

DR BY: ADAM FINCH 3/21/03

PART NUMBER: F93-2000

CUT LENGTH

DESCRIPTION:

FINISH:

UNSPECIFIED CORNERS 0.007

AREA: inch<sup>2</sup> WPF: lb

ALLOY: WALL: 0.000

±1/64	FRACTION
±0.0100	X.X
±0.0010	X.XX
±0.0005	X.XXX
	X.XXXX
SUBTRACT 5 PTS. FOR EACH UNIT OF TOL. ANGLE ±1°	