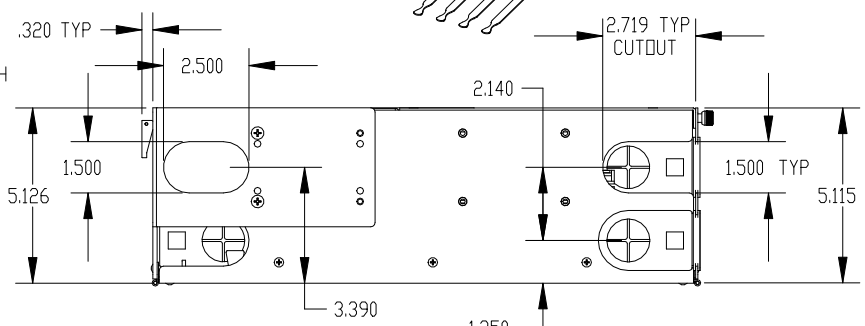
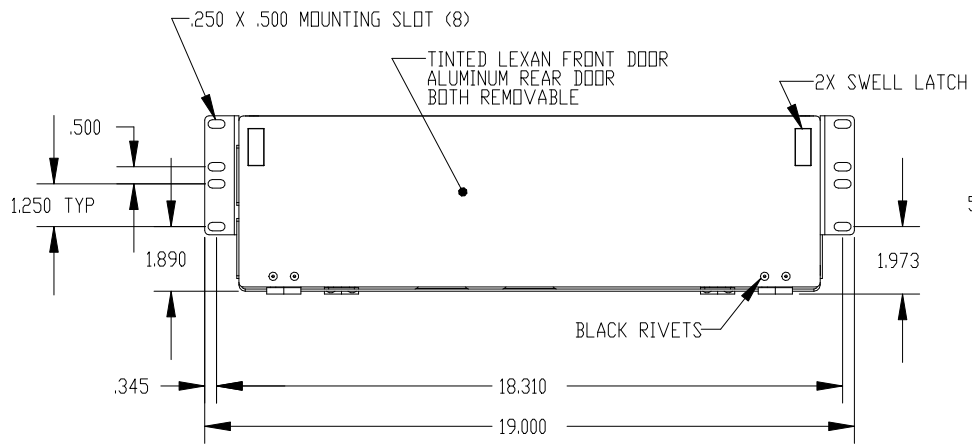
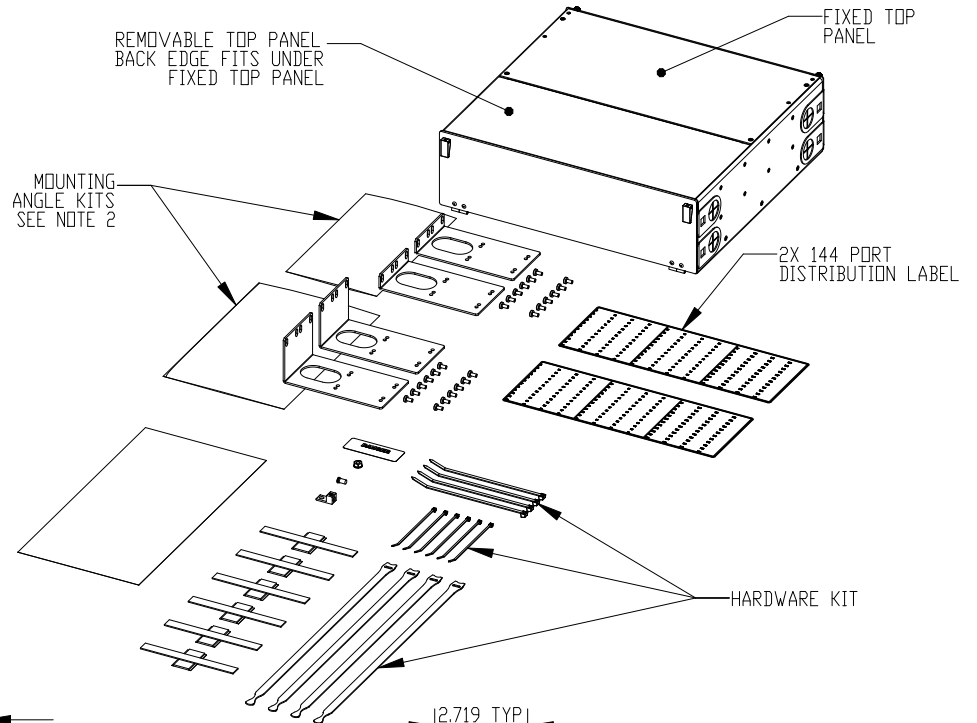
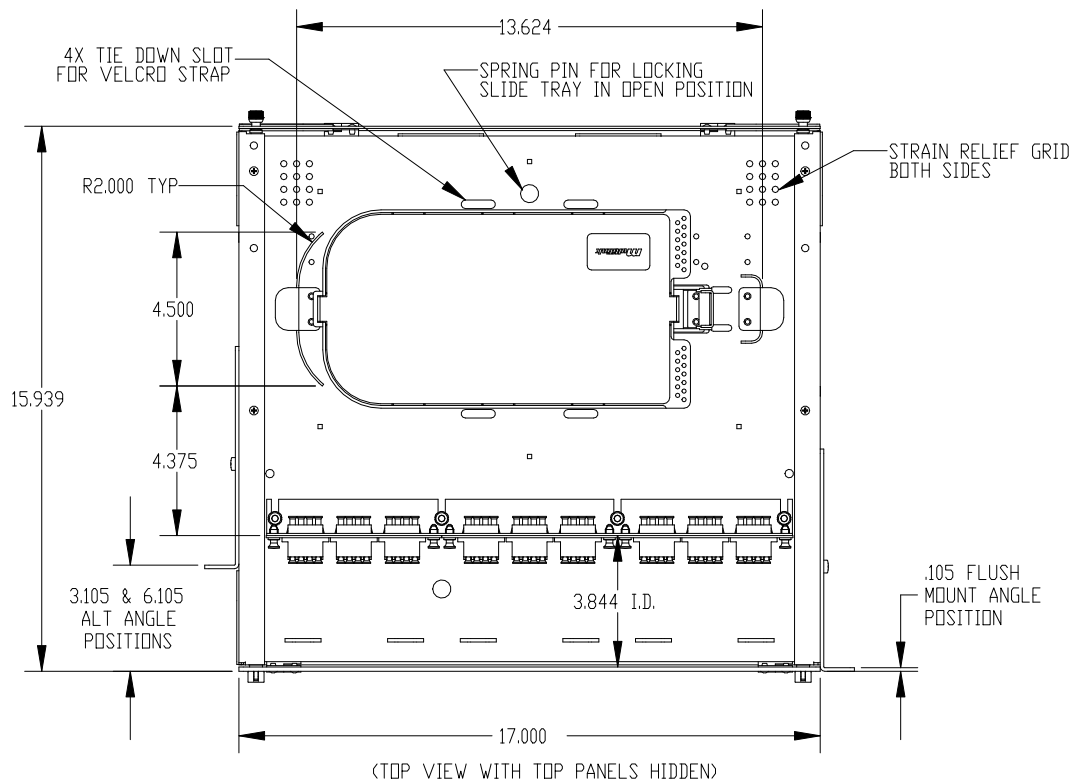


| REV. | ECN # | DESCRIPTION OF CHANGE | DATE | BY | MFG ENG |
|------|-------|-----------------------------|----------|-----|---------|
| 01 | N/A | INITIAL RELEASE | 06/18/10 | SAB | |
| 04 | 2355 | UPDATED DWG PER CURRENT REV | 06/06/11 | SAB | |
| 05 | N/A | UPDATED DRAWING | 07/06/12 | SAB | |
| 07 | N/A | UPDATED DRAWING | 11/04/15 | SAB | |



NOTES:
 1. SPLICE TRAYS AND ADAPTER PANELS SHOWN FOR REFERENCE ONLY.
 2. MOUNTING ANGLES ARE INCLUDED FOR 19 AND 23 INCH RACK.

| | | | | | |
|---|--|--|--|---|--|
| UNLESS OTHERWISE SPECIFIED DIMENSIONS ARE IN INCHES TOLERANCES ARE: FRACTIONS: ±1/32 DECIMALS: .XXX = ±.03 .XXX = ±.010 ANGLES: ±1° | | THIS DOCUMENT AND THE INFORMATION CONTAINED THEREIN ARE CONFIDENTIAL & PROPRIETARY TO MULTILINK AND MAY NOT BE COPIED OR DISCLOSED TO OTHERS WITHOUT A WRITTEN CONSENT FROM MULTILINK. THE INFORMATION IS TO BE PROMPTLY RETURNED TO MULTILINK UPON REQUEST. | | m ultilink | |
| ALL FLATS TO BE .005 NO SHARP EDGES OR BURRS ALLOWED | | DRAWN BY: SAB DATE: 06/18/2010 | | FRM-3RU-9X-TS-HD BK | |
| MATERIAL: SEE B.O.M. | | CHECKED: DATE: | | SIZE: B | |
| FINISH: BLACK TEXTURED | | MFG ENG: DATE: | | DWG. NO: 045-418-10REF | |
| DO NOT SCALE DRAWING | | QUALITY ENG: DATE: | | REV: 07 | |
| | | | | SCALE: 1/4 CAD FILE: 045-418-10REF SHEET 1 OF 2 | |