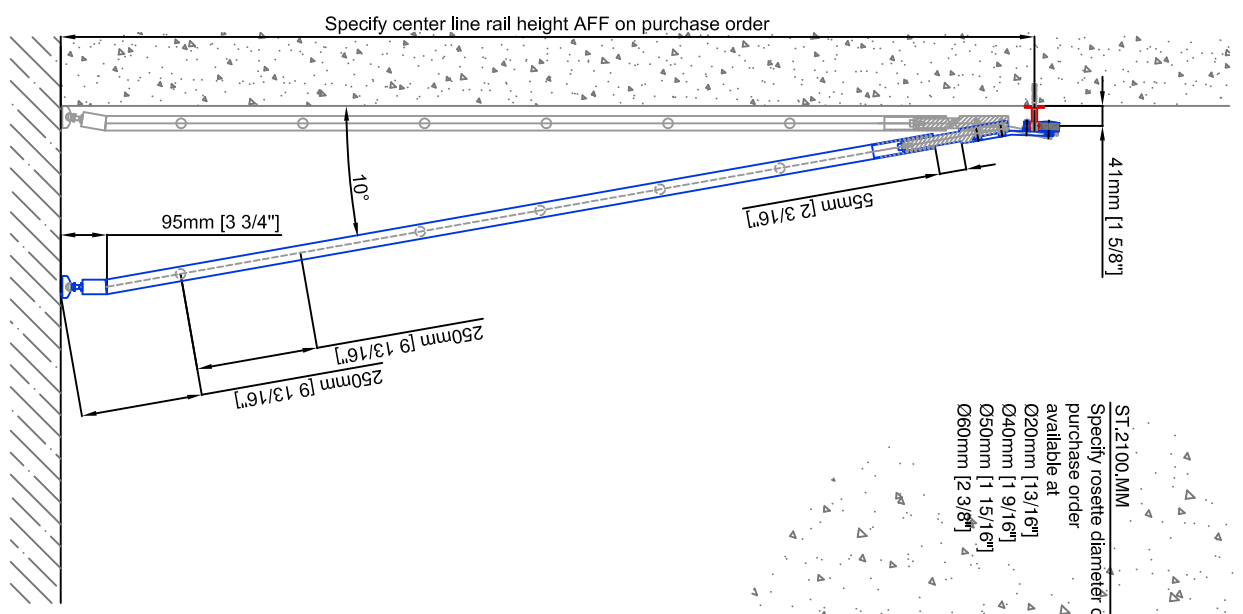
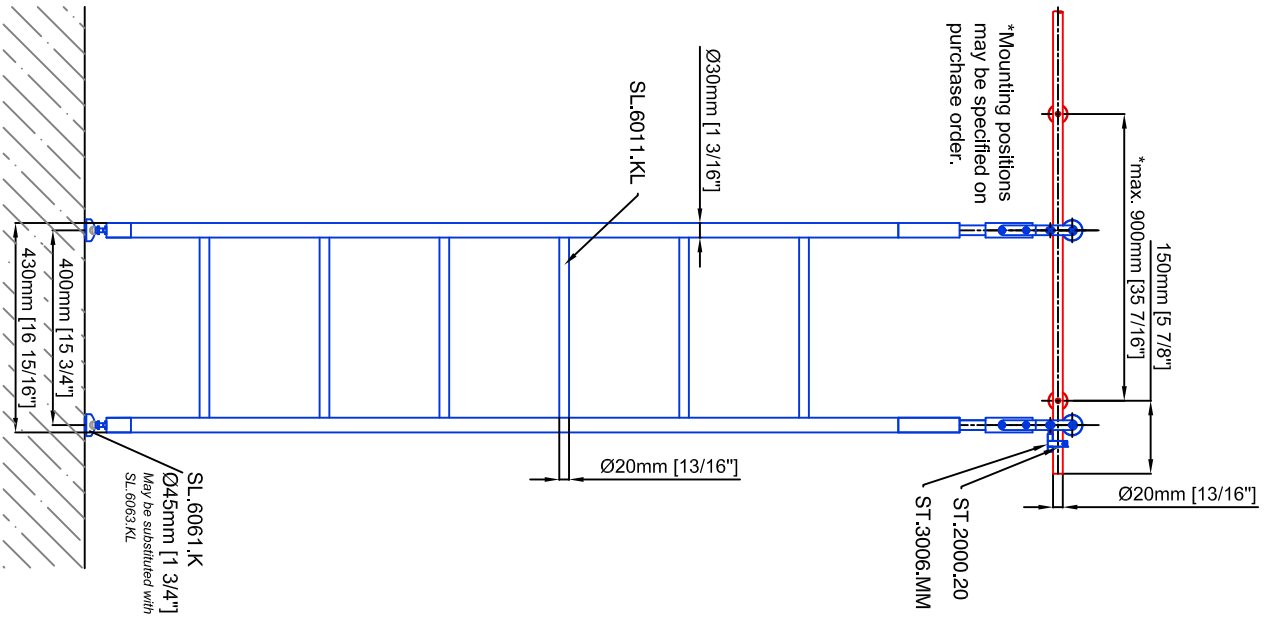
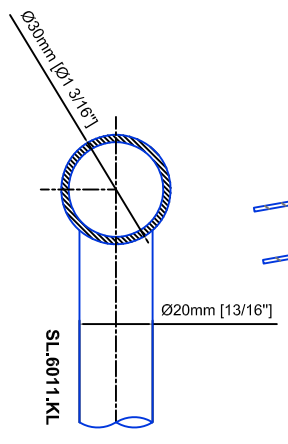


Technical drawings are subject to change without notice.
 All millimeter dimensions are exact and supersede inch conversions.
Ladder height at or above 3000mm [118 1/8"]
 require safety side rails SL.6052.KL

Copyright MWE NA Inc., all rights reserved. Reproduction or other use
 of these designs without written consent from MWE NA Inc. is prohibited.
 All ladder systems require reinforced walls, cabinets, or shelving.



ST.2100.MM
 Specify rosette diameter on
 purchase order
 available at
 Ø20mm [13/16"]
 Ø40mm [1 9/16"]
 Ø50mm [1 15/16"]
 Ø60mm [2 3/8"]



Telescopic Ladder SL.6003.KL

Date Prepared: October 2018 | Prepared By: CDA | JRT