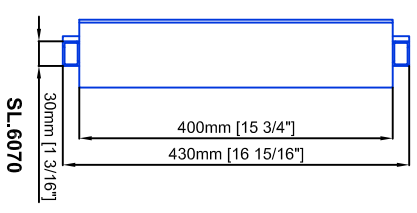
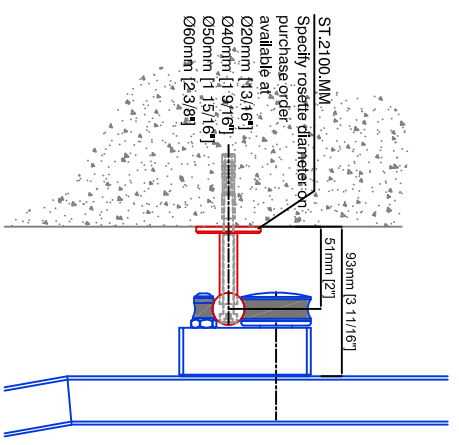
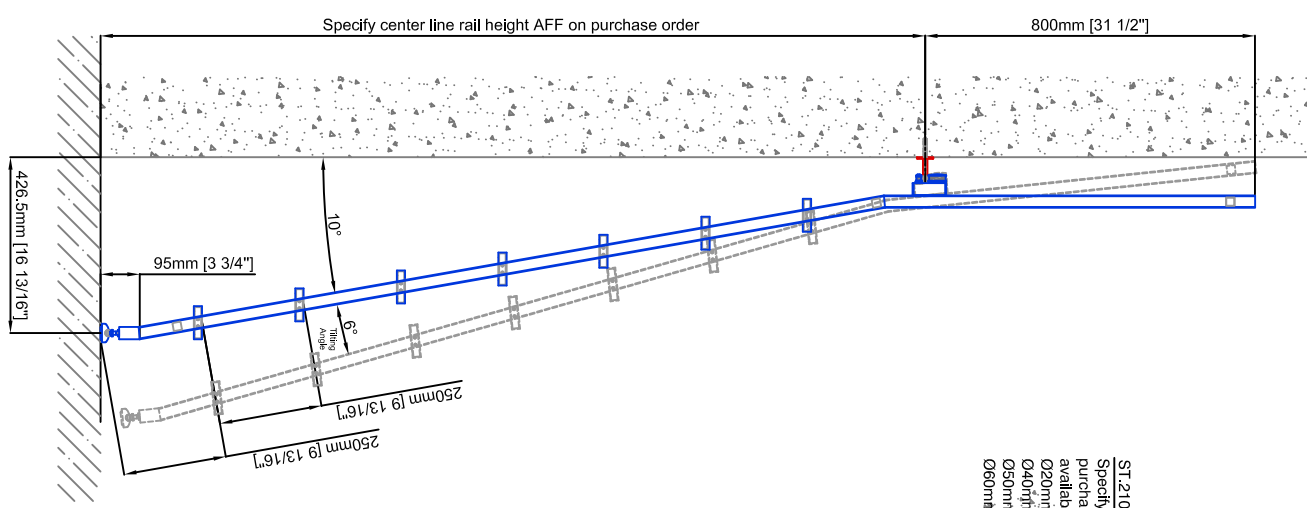
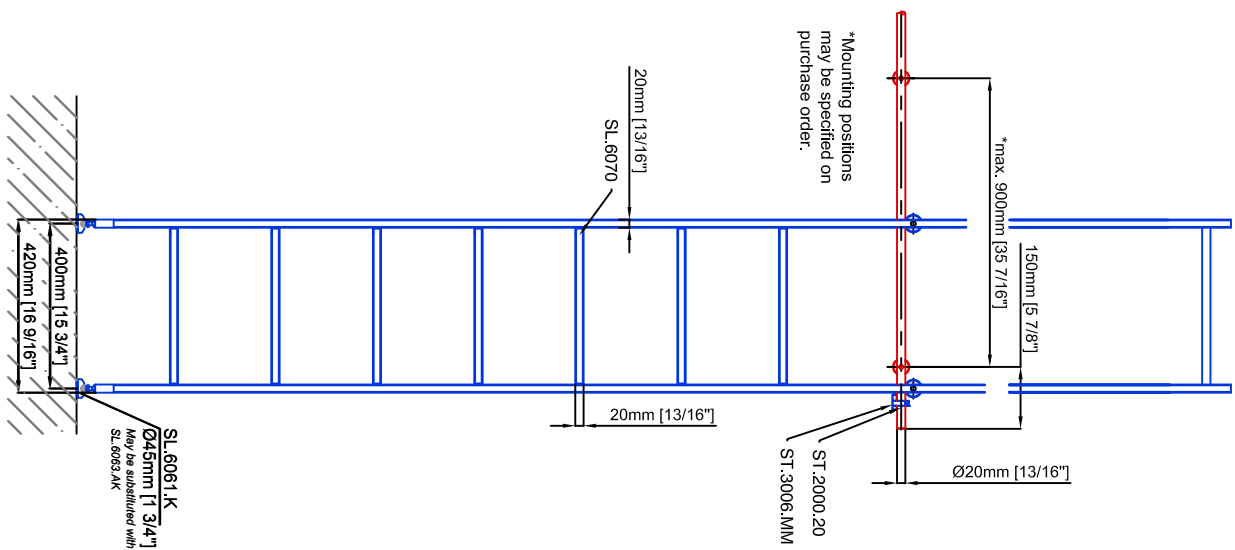


Technical drawings are subject to change without notice.
 All millimeter dimensions are exact and supersede inch conversions.

Ladder height at or above 3000mm [118 1/8"]
 require safety slide rails SL.6052.AK



Tangens Ladder SL.6006.AK.E

Date Prepared: October 2018 Prepared By: CDA | JRT

Copyright MWE NA Inc. all rights reserved. Reproduction or other use of these designs without written consent from MWE NA Inc. is prohibited.
 All ladder systems require reinforced walls, cabinets, or shelving.

