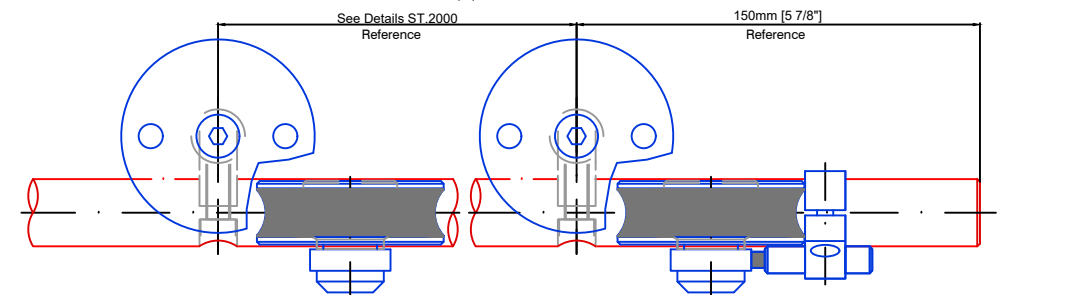
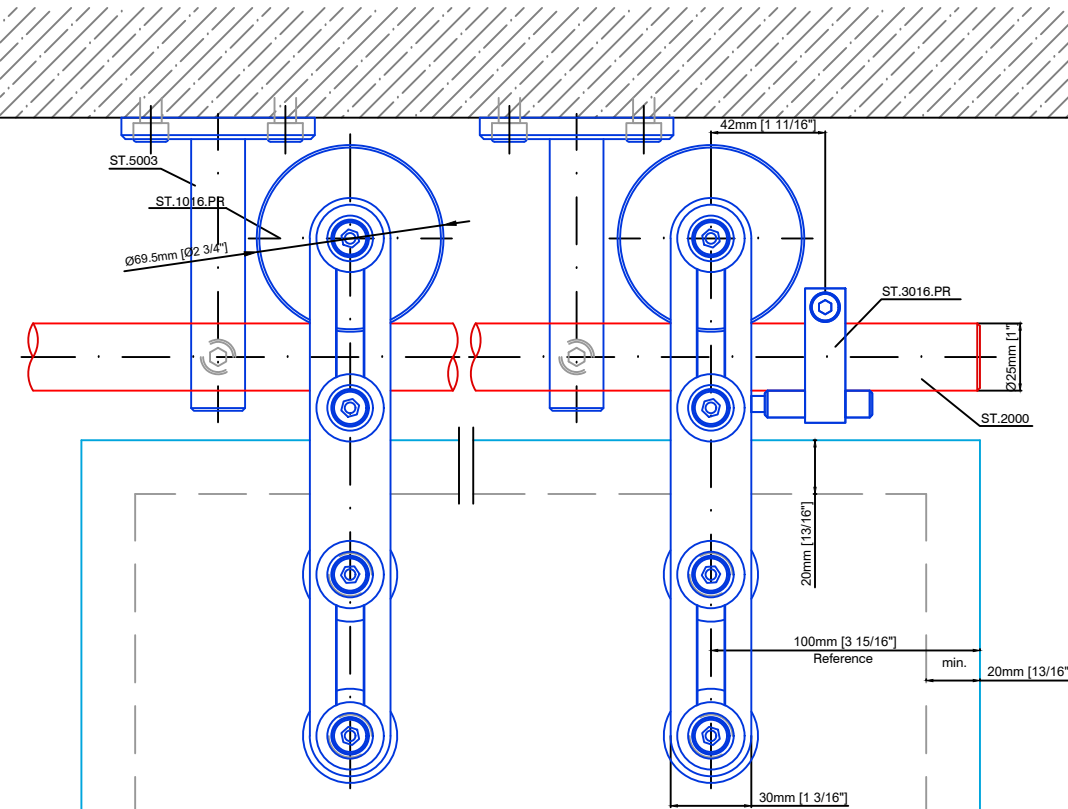
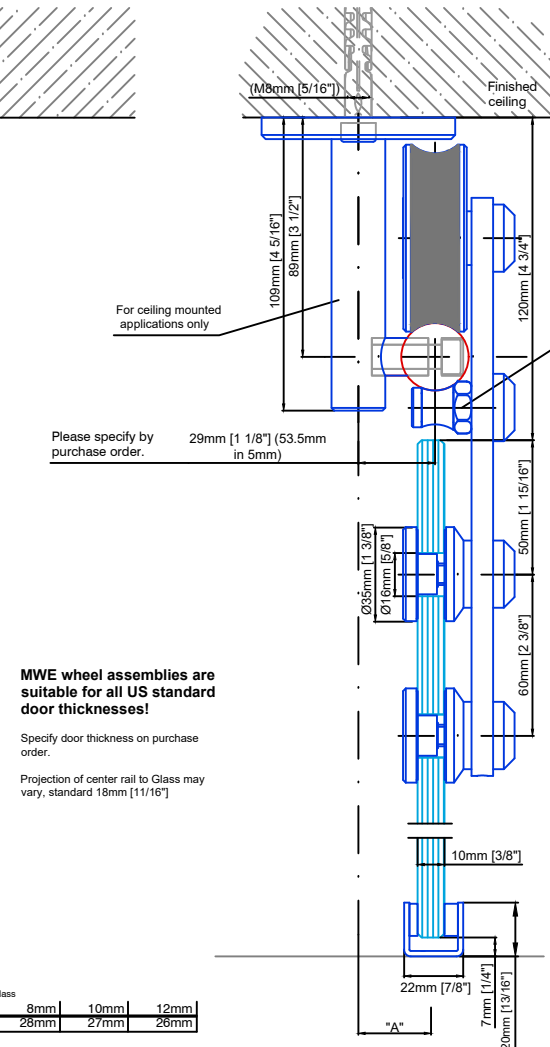


Technical drawings are subject to change without notice.
All millimeter dimensions are exact and supersede inch conversions.

Copyright MWE NA Inc., all rights reserved. Reproduction or other use of these designs without written consent from MWE NA Inc. is prohibited.



ESG
Tempered Glass
Maximum door
weight 231 Lbs.



Please specify by purchase order. 29mm [1 1/8"] (53.5mm in 5mm)

Please Note:
Anti-jump wheel is adjustable via the eccentric hole.

MWE wheel assemblies are suitable for all US standard door thicknesses!

Specify door thickness on purchase order.

Projection of center rail to Glass may vary, standard 18mm [11/16"]

dimension	Glass	8mm	10mm	12mm
A		28mm	27mm	26mm

dimension	Glass	5/16"	3/8"	1/2"
A		1 1/8"	1 1/16"	1"

Protec ST.1016.PR

Date Prepared: July 2018

Prepared By: CDA | JRT



Email: info@mwe-na.com
www.mwe-na.com