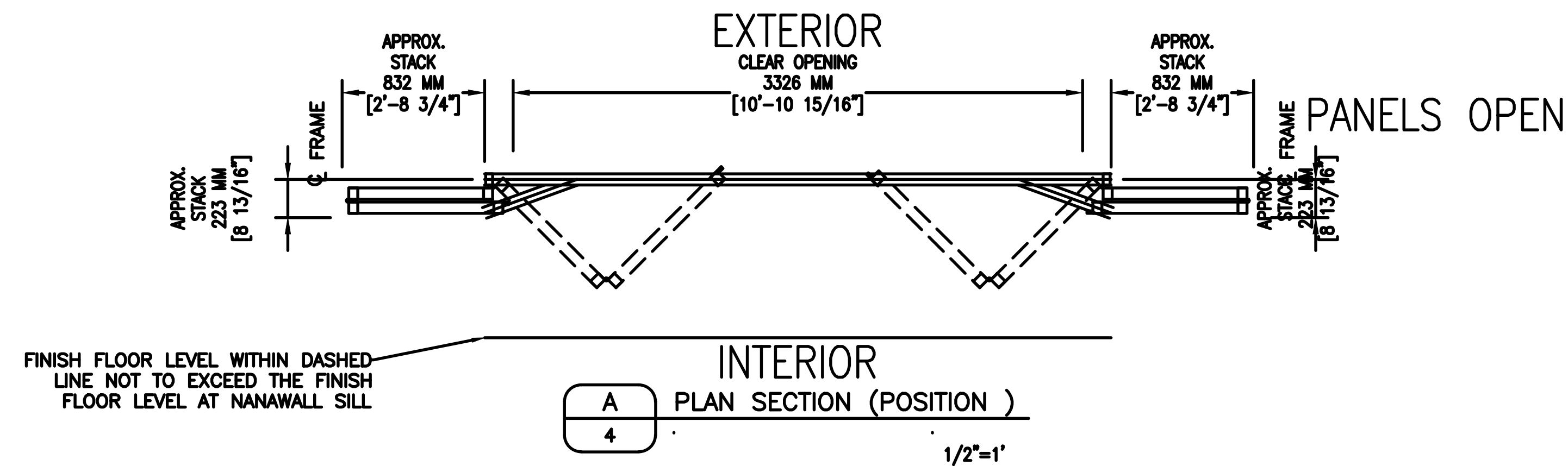
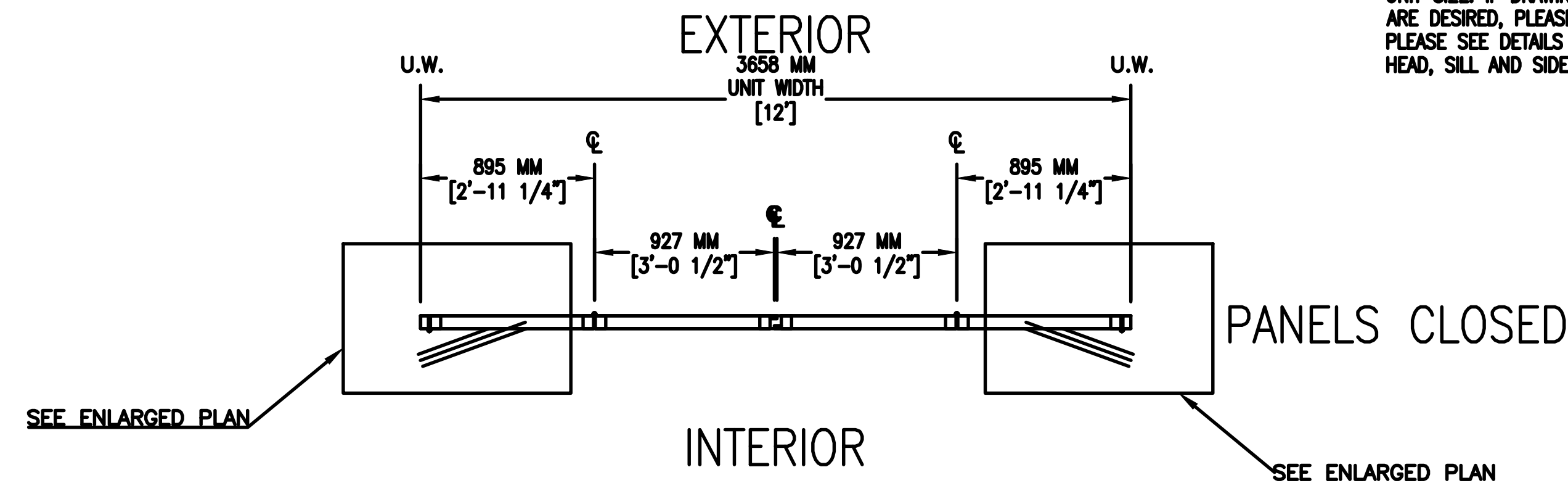
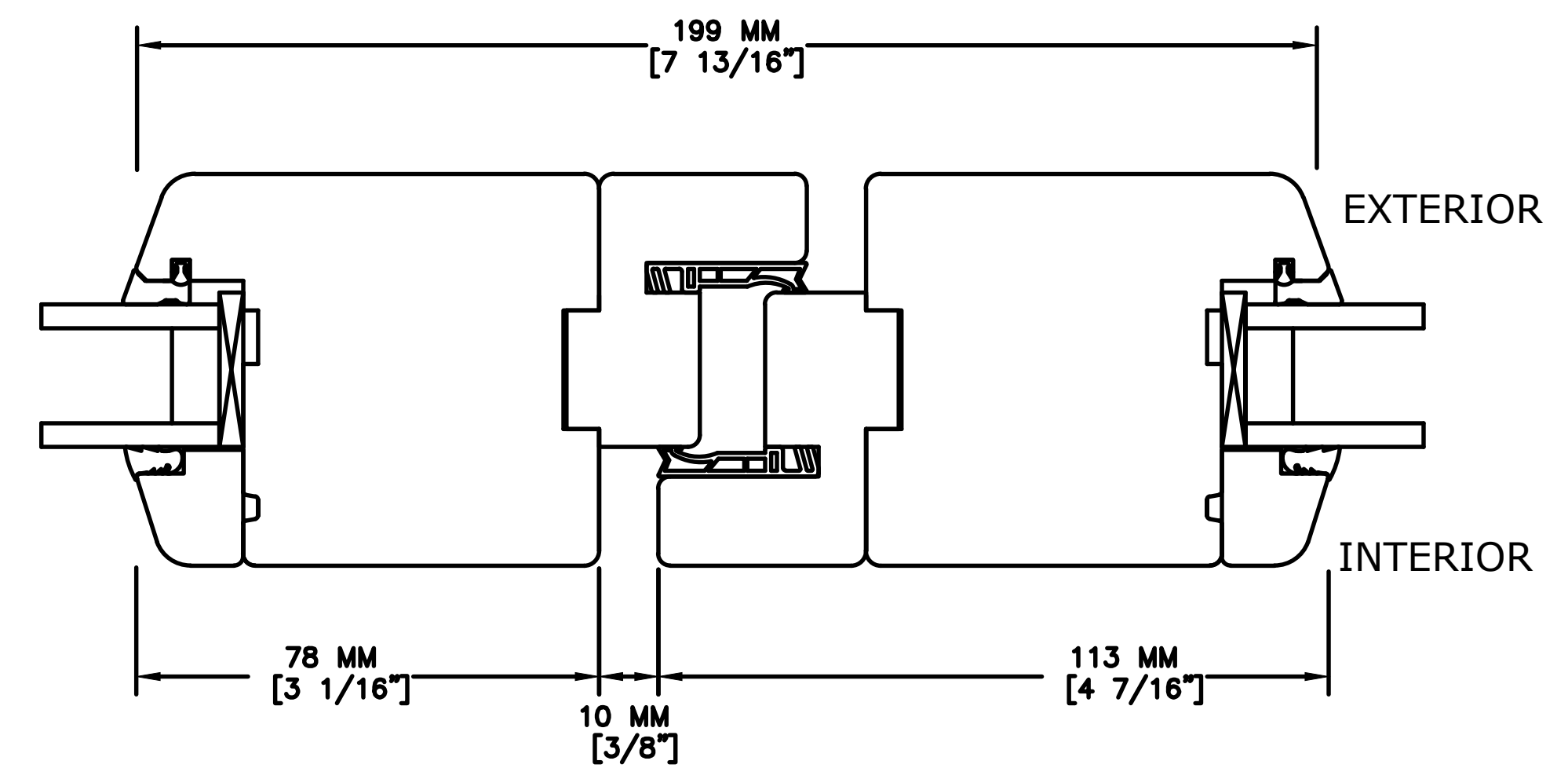
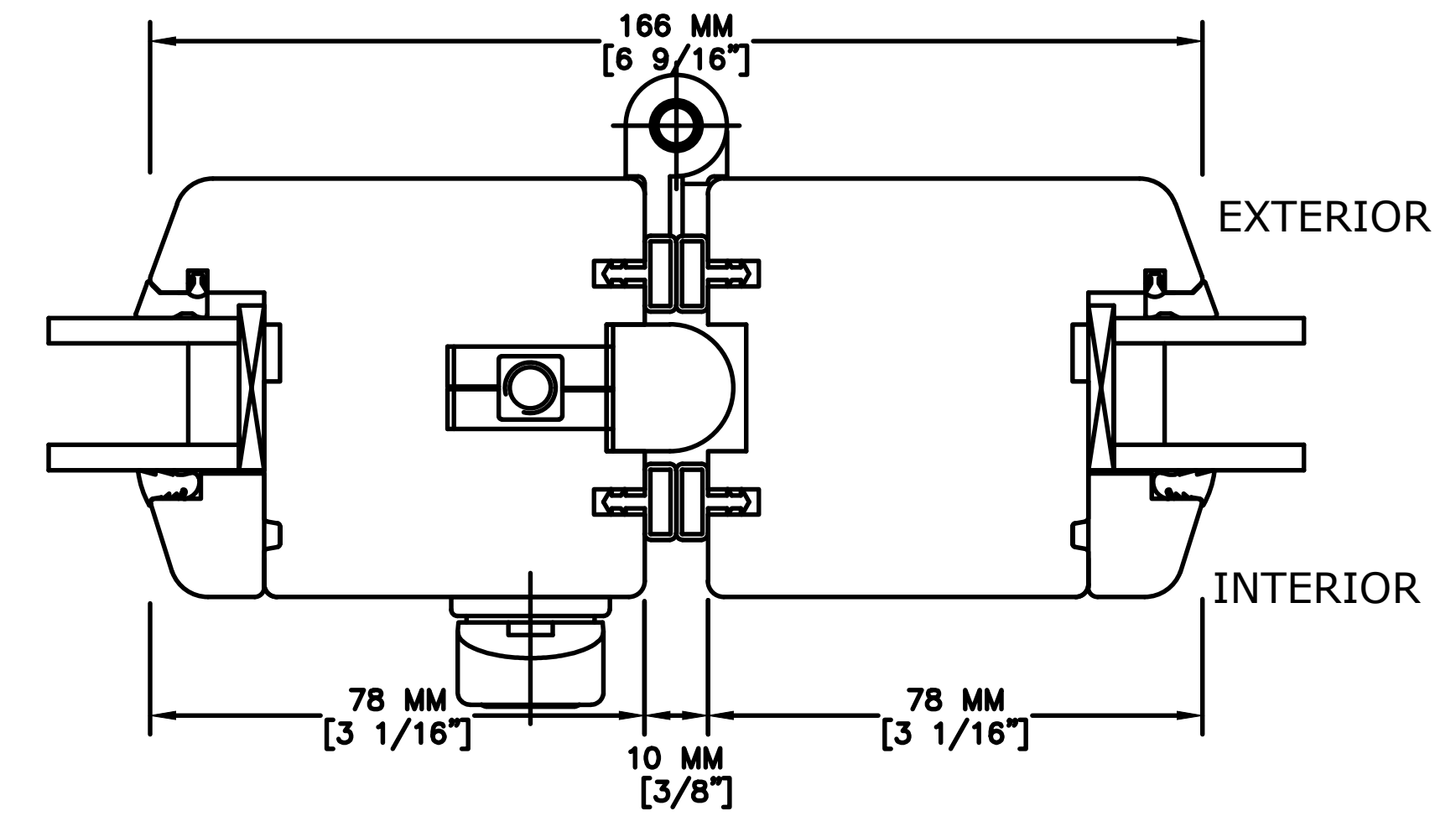
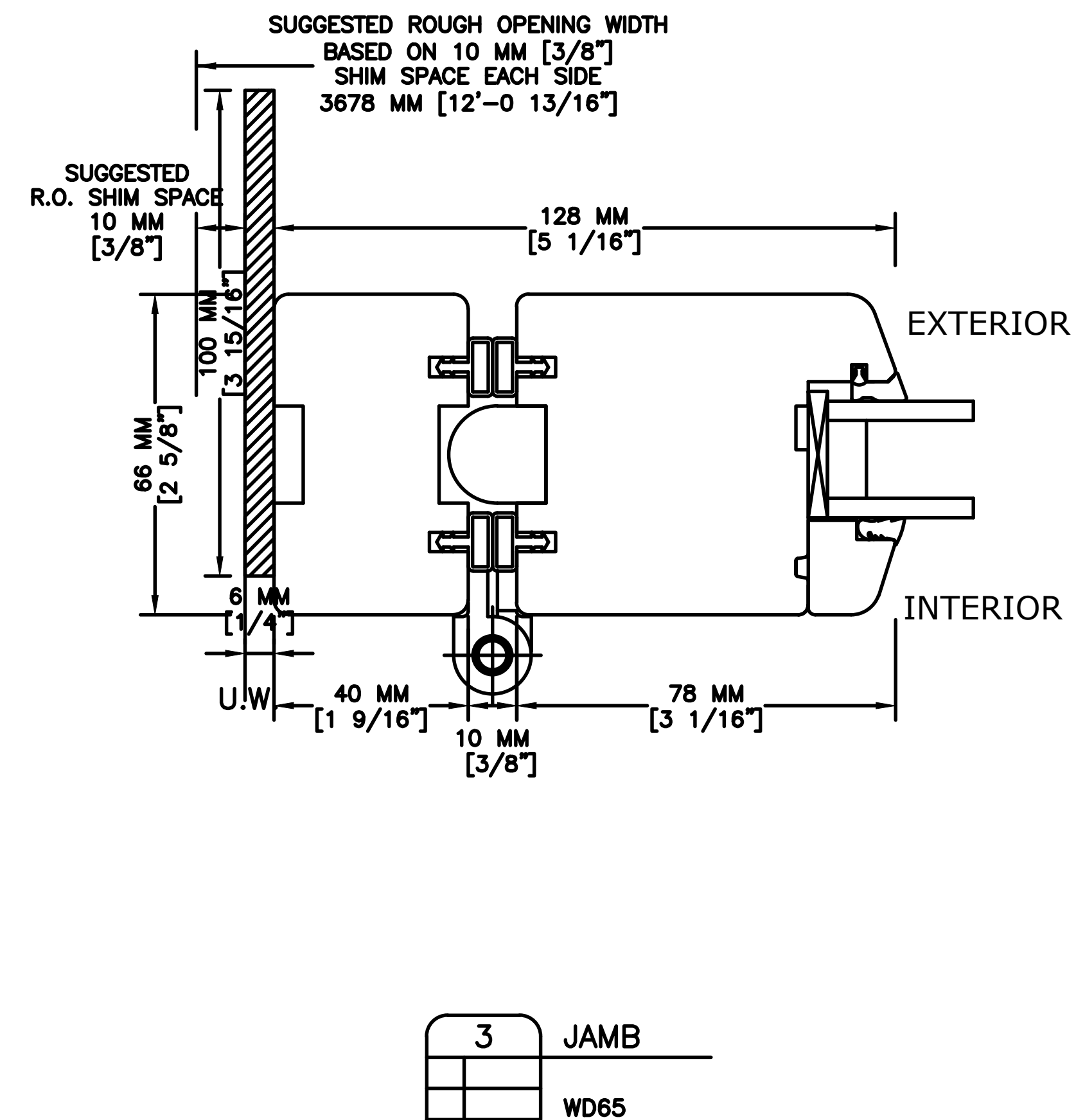
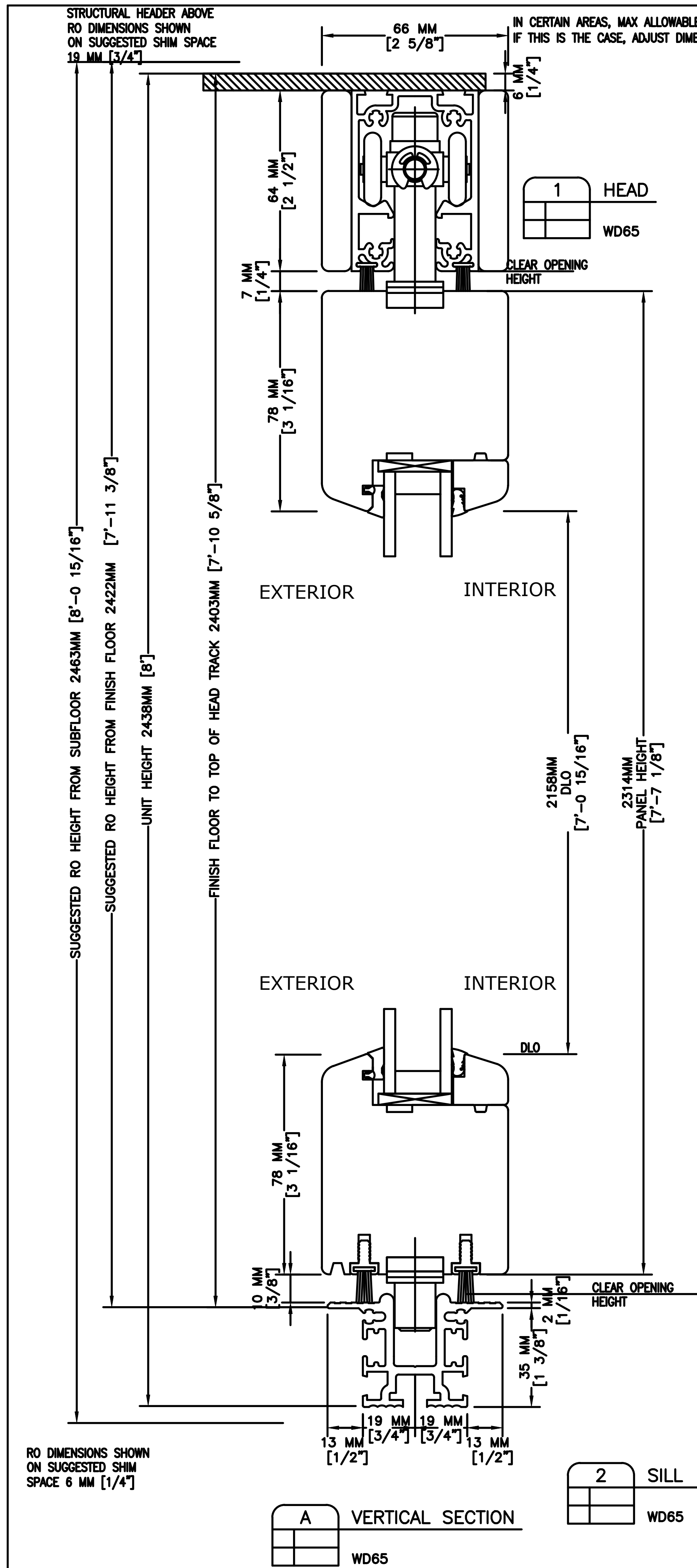


NANA WALL WD65 FOLDING SYSTEMS (WOOD)
 CONFIGURATION: INWARD 2 LEFT - INWARD 2 RIGHT
 SILL TYPE: NON-THERMALLY BROKEN FLUSH SILL (NO RATING AGAINST WIND DRIVEN RAIN OR SURFACE WATER)
 MOUNT OPTION: TOP

* FIRST PANEL OPEN

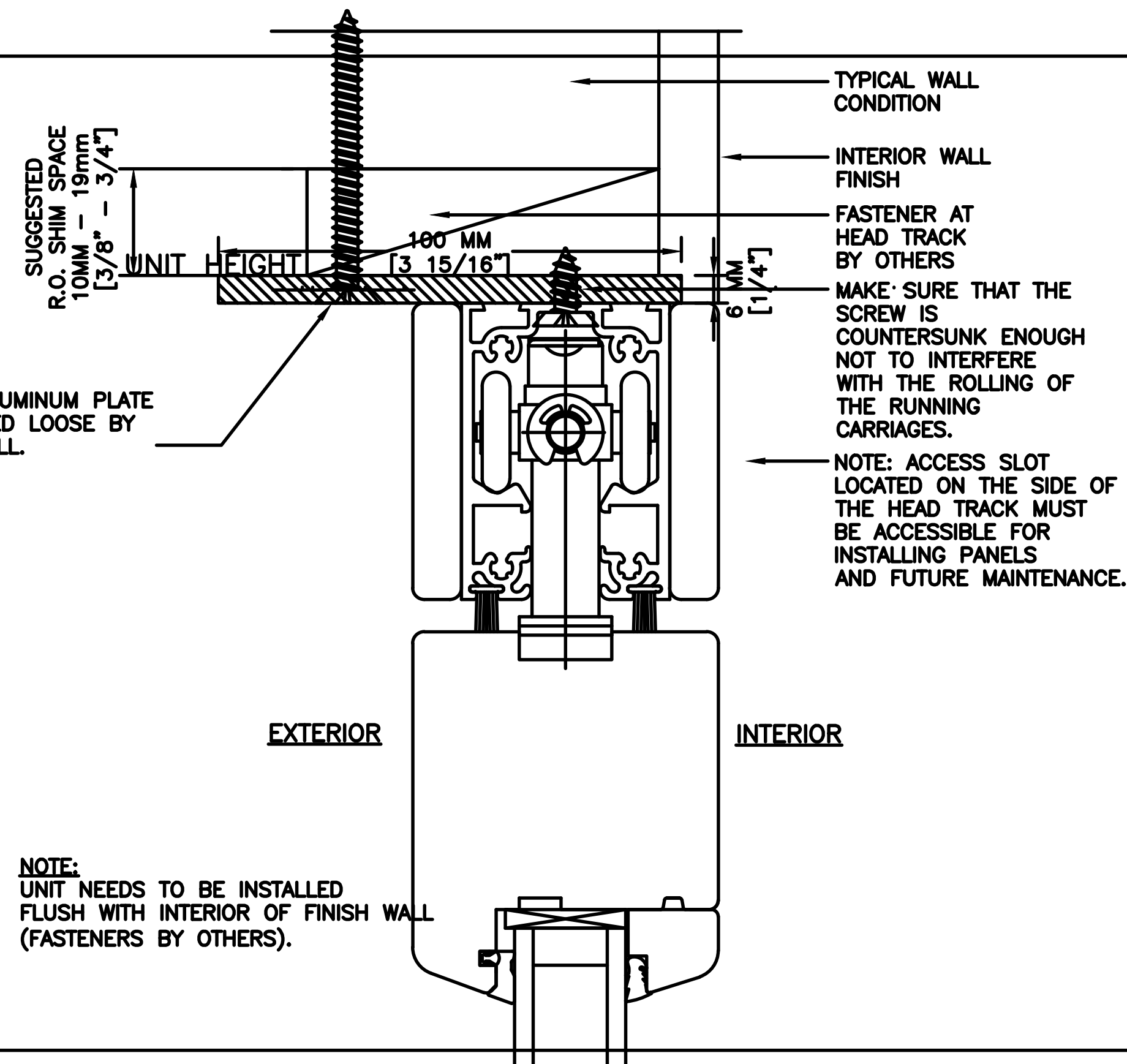
NOTE:
 FOR SUGGESTED ROUGH OPENING DIMENSION PLEASE SEE FRAME SECTION DETAILS ON FOLLOWING DETAIL SHEET
 THESE DRAWINGS ARE BASED ON A UNIT HEIGHT OF 8' AND UNIT WIDTH IN INCREMENTS OF 3' FOR EACH PANEL. THE PURPOSE IS ONLY TO SHOW RELEVANT CROSS SECTION DETAILS AND VARIOUS DIMENSIONS APPLICABLE ONLY FOR THIS SPECIFIC UNIT SIZE. IF DRAWINGS FOR OTHER UNIT SIZES ARE DESIRED, PLEASE CONTACT NANA WALL.
 PLEASE SEE DETAILS TAB FOR CROSS SECTIONS OF HEAD, SILL AND SIDE JAMB





WD65 FOLDFLAT
INWARD OPENING
SUGGESTED TYPICAL INSTALLATION
For Panels to be able to fold flat against the adjacent wall, unit will need to be installed flush with the outer most projection of the adjacent wall. Since the structural wall is offset the standard method of installing with screw through the center of the frame will not be possible. Alternate method using a flat Aluminum plate as shown will be needed.

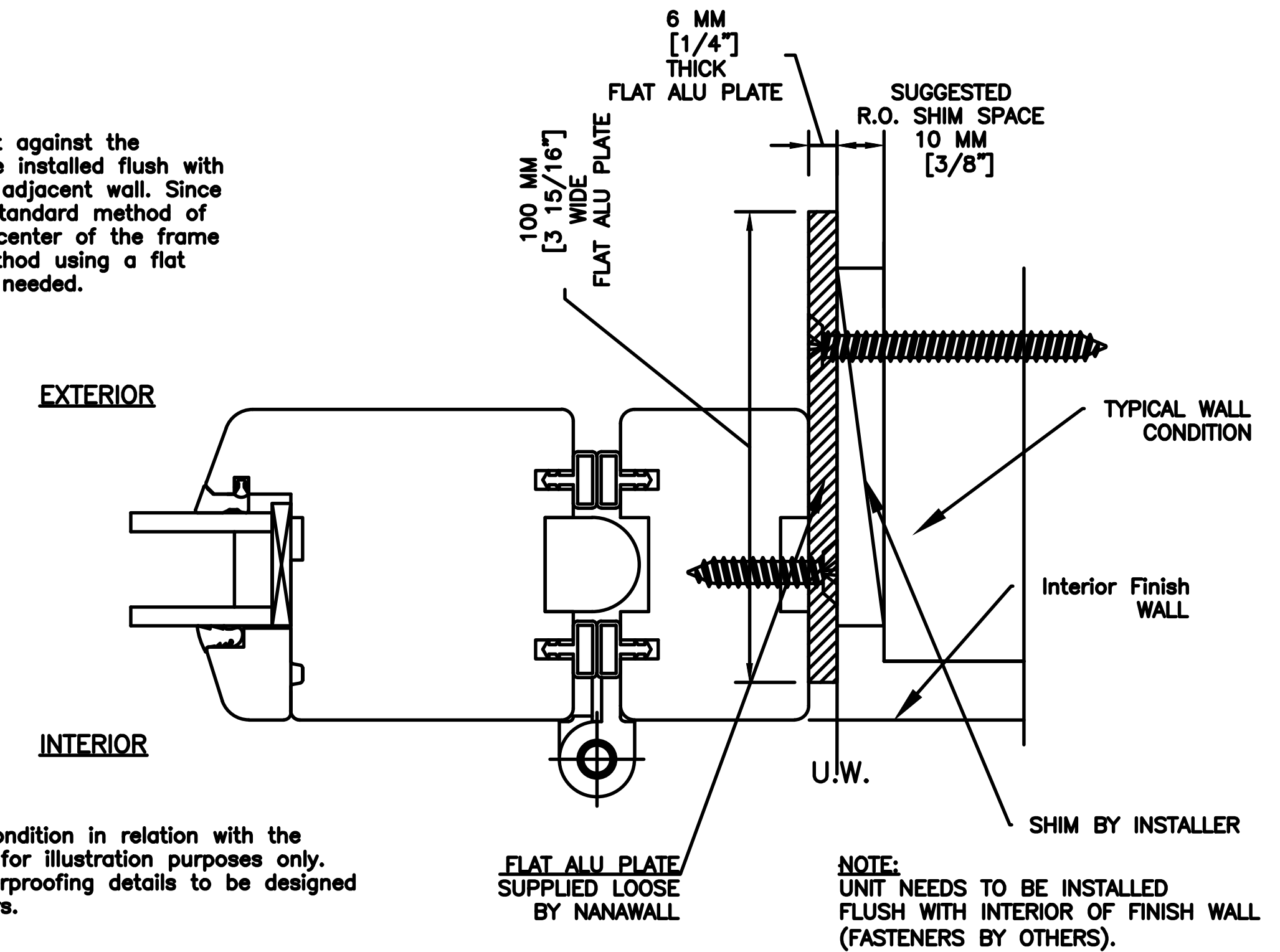
FLAT ALUMINUM PLATE
SUPPLIED LOOSE BY
NANAWALL.



NOTE:
General typical wall condition in relation with the folding unit is shown for illustration purposes only. Construction and waterproofing details to be designed and provided by others.

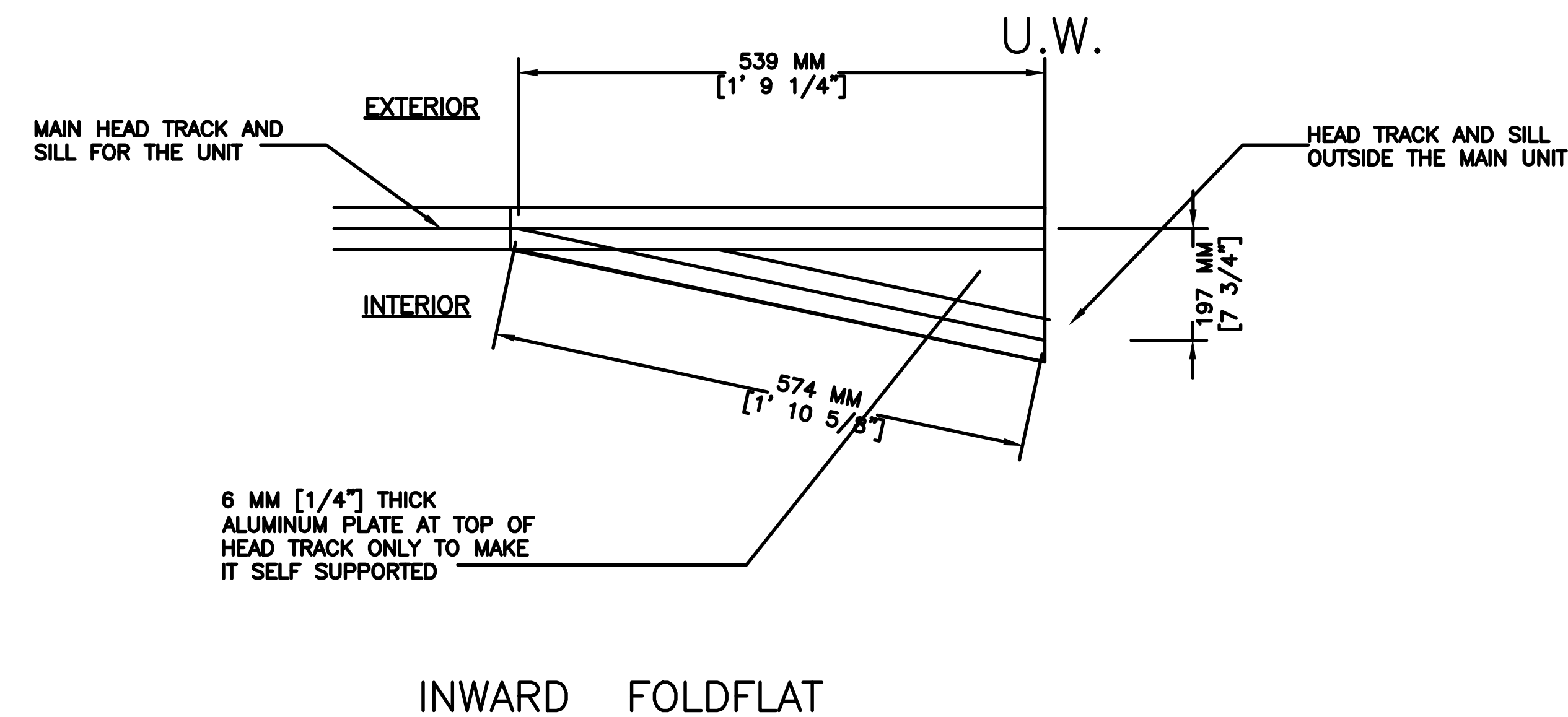
NOTE:
UNIT NEEDS TO BE INSTALLED FLUSH WITH INTERIOR OF FINISH WALL (FASTENERS BY OTHERS).

WD65 FOLDFLAT
INWARD OPENING
SUGGESTED TYPICAL INSTALLATION
For Panels to be able to fold flat against the adjacent wall, unit will need to be installed flush with the outer most projection of the adjacent wall. Since the structural wall is offset the standard method of installing with screw through the center of the frame will not be possible. Alternate method using a flat Aluminum plate as shown will be needed.



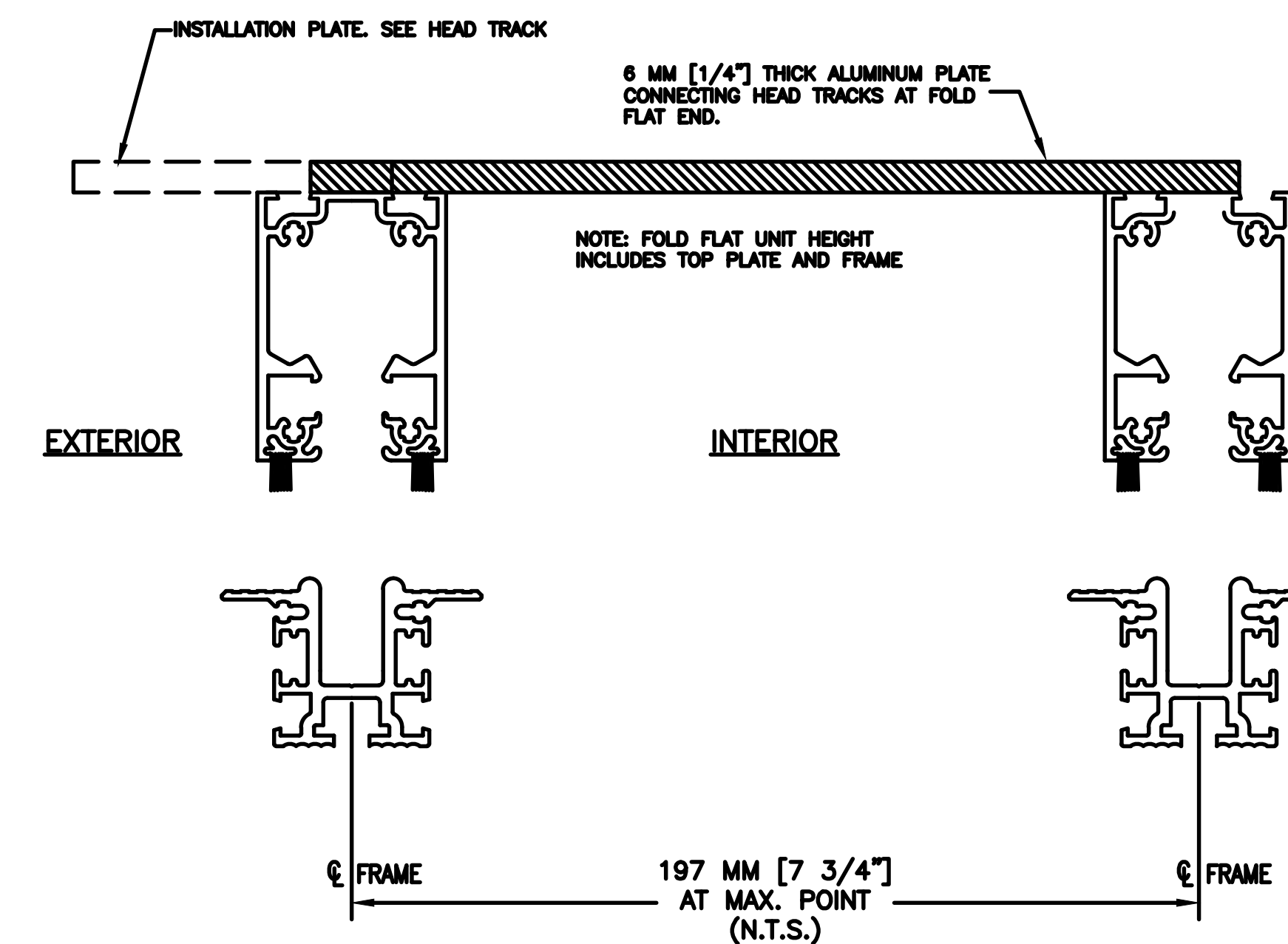
NOTE:
General typical wall condition in relation with the folding unit is shown for illustration purposes only. Construction and waterproofing details to be designed and provided by others.

(IN) SUGGESTED TYPICAL HEAD JAMB INSTALLATION - INWARD OPENING



(S) TYPICAL PLAN VIEW OF HEAD TRACK AND SILL LAYOUT AT THE END OF FOLDFLAT UNIT

(IN) SUGGESTED TYPICAL SIDE JAMB INSTALLATION - INWARD OPENING



(V) TYPICAL HEAD TRACK AND SILL VERTICAL SECTION I - FOLDFLAT