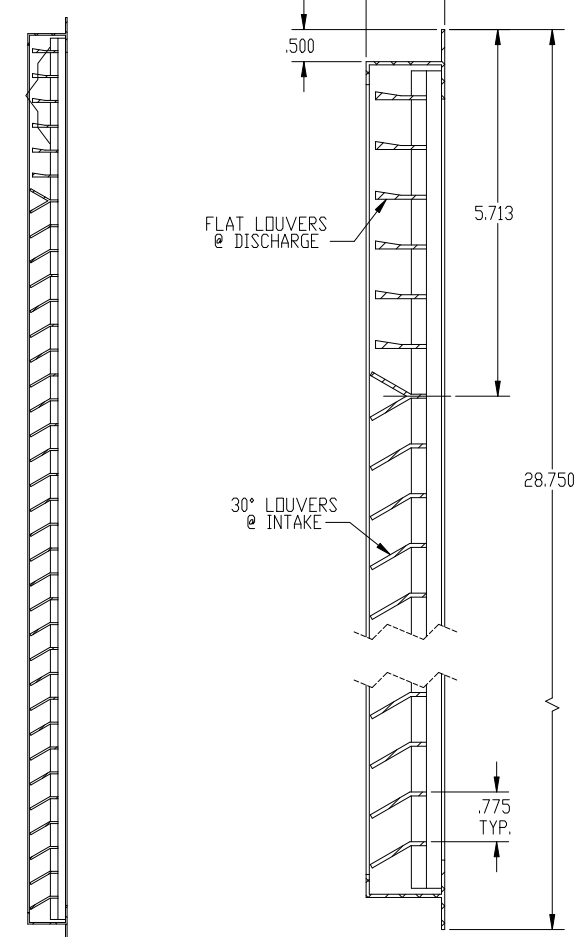


DISCHARGE



(R1)
5/8" x 1/2"
NOTCH
(4)

(R2)

FLAT LOUVERS
@ DISCHARGE

30° LOUVERS
@ INTAKE

.775
TYP.

PROPRIETARY AND CONFIDENTIAL

ALL DIMENSIONS ARE IN INCHES
TOLERANCES: EXCEPT WHERE SPECIFIED:
FRACTIONAL: MACH 1/64" FAB 1/32"
ANGULAR: MACH 0° BEND 1"
DECIMAL: .005

THE INFORMATION CONTAINED IN THIS
DRAWING IS THE SOLE PROPERTY OF
NATIONAL COMFORT PRODUCTS. ANY
REPRODUCTION IN PART OR AS A WHOLE
WITHOUT THE WRITTEN PERMISSION OF
NATIONAL COMFORT PRODUCTS IS
PROHIBITED.

MATERIAL: EXTRUDED ALUMINUM
TYPE: 6063-T5
FINISH: BRUSHED

R2	1/2/2013	JK	5/8" WAS 9/16" (NOTCHES)
R1	9/28/12	JK	ADDED (4) NOTCHES

REV	DATE	REV BY	DESCRIPTION
-----	------	--------	-------------

ARCHITECTURAL GRILLE
NCP 1000 SERIES



NATIONAL COMFORT PRODUCTS
539 DUNKSFERRY RD. BENSALEM, PA. 19020

DATE:	09-05-12	DWG. NO.	
SCALE:	1:3		
NAME:	JK		142-69-035