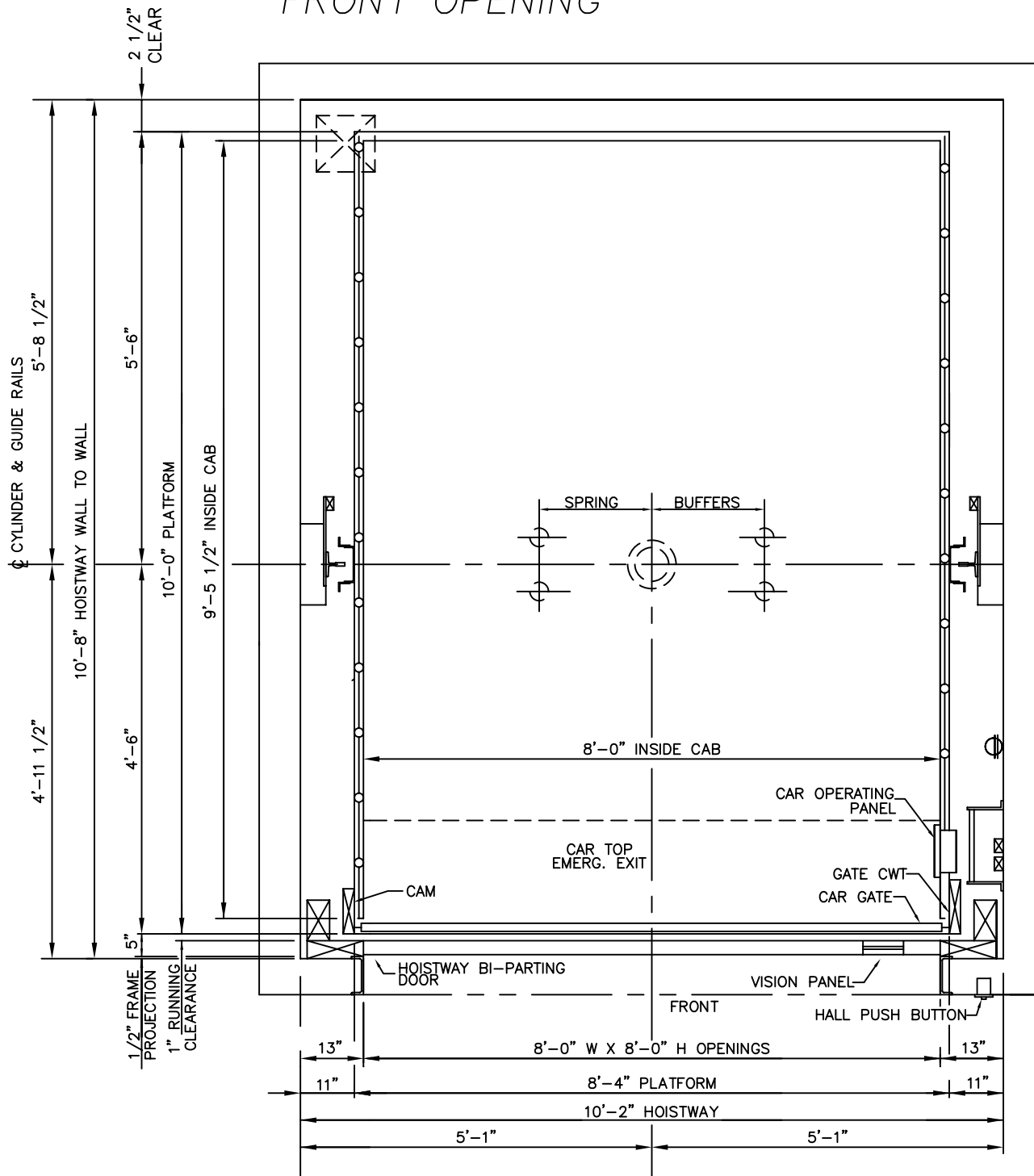


# 6000 LBS. FREIGHT INGROUND HYDRAULIC FRONT OPENING



CYLINDER & PLATFORM  
A

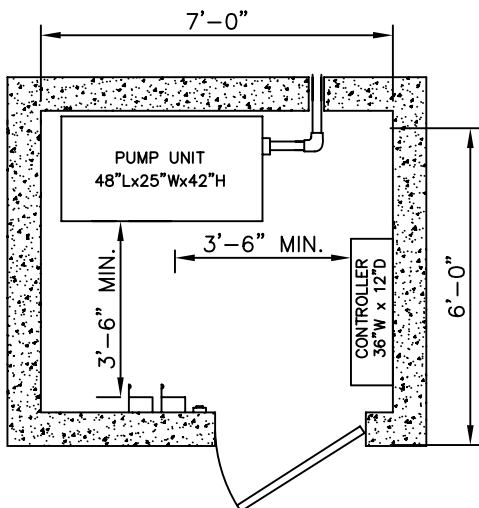
## HOISTWAY PLAN

ALL DIMENSIONS ARE SUBJECT TO CHANGE WITHOUT NOTICE.  
 CONSULT NATIONWIDE LIFTS CO. FOR CONFIRMATION.

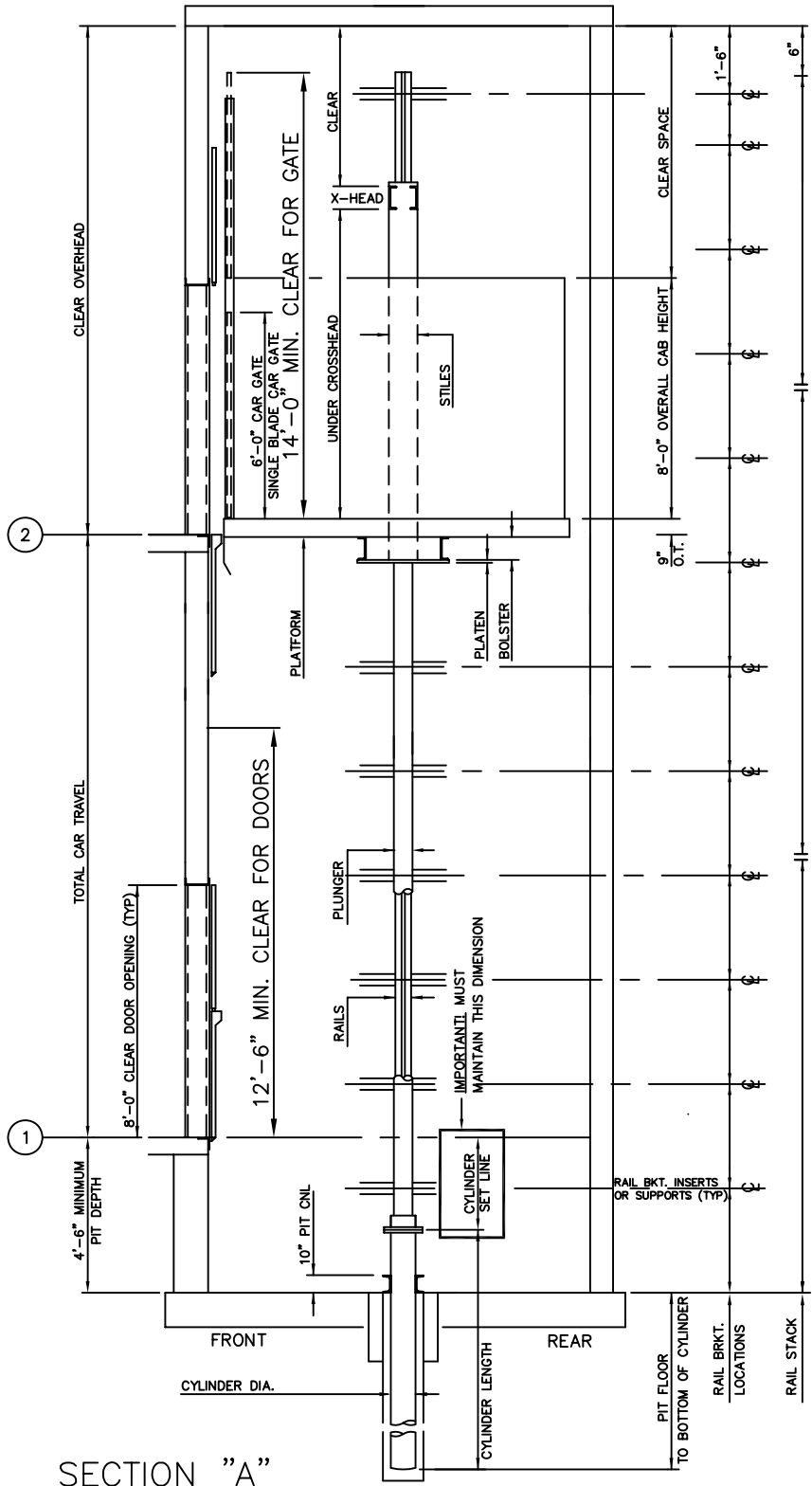


P: 888-695-4387, E: info@elevators.com

# 6000 LBS. FREIGHT INGROUND HYDRAULIC FRONT OPENING



MACHINE ROOM DETAIL



SECTION "A"

ELEVATION PLAN


**Nationwide Lifts**  
[www.elevators.com](http://www.elevators.com)

P: 888-695-4387, E: info@elevators.com