

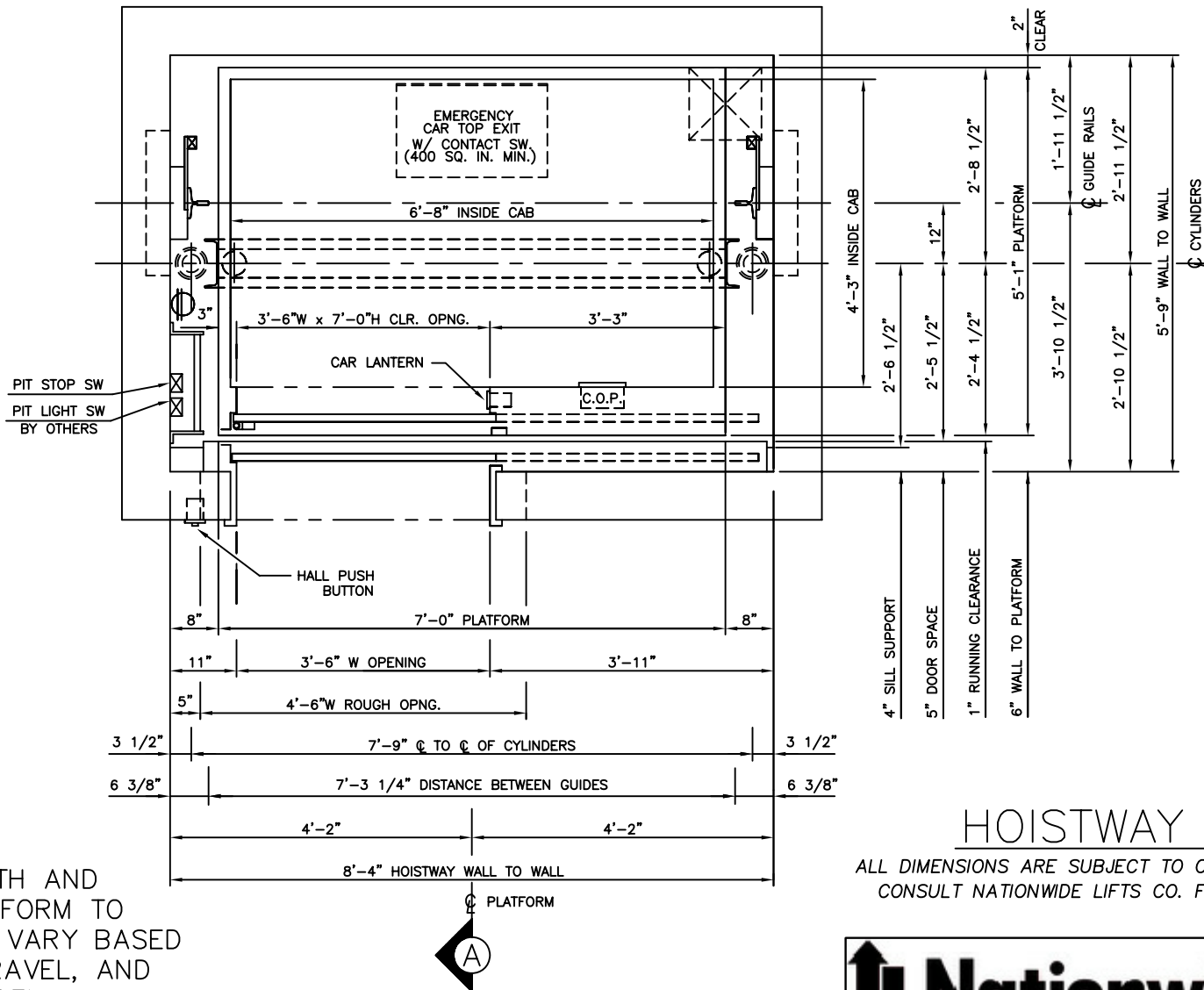
NOTE: HOISTWAY WIDTH AND DISTANCE FROM PLATFORM TO HOISTWAY WALL WILL VARY BASED ON SIZE OF JACK, TRAVEL, AND CAPACITY. CONSULT DEI ENGINEERING.

HOISTWAY PLAN
 ALL DIMENSIONS ARE SUBJECT TO CHANGE WITHOUT NOTICE.
 CONSULT NATIONWIDE LIFTS CO. FOR CONFIRMATION.

*2500 LBS. 2 STAGE HOLELESS HYDRAULIC
 FRONT RIGHT OPENING*



P: 888-695-4387, E: info@elevators.com



NOTE: HOISTWAY WIDTH AND DISTANCE FROM PLATFORM TO HOISTWAY WALL WILL VARY BASED ON SIZE OF JACK, TRAVEL, AND CAPACITY. CONSULT DEI ENGINEERING.

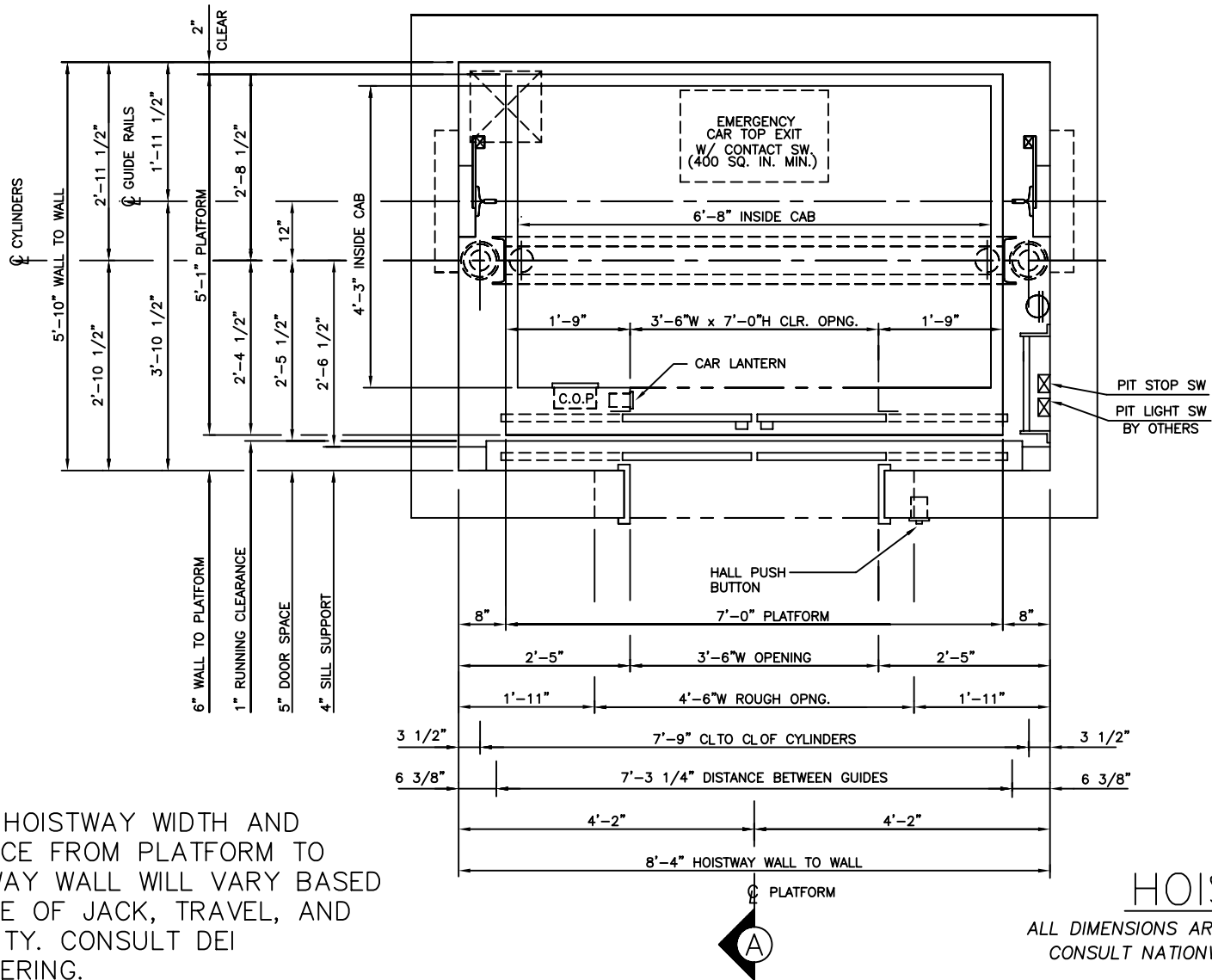
*2500 LBS. 2 STAGE HOLELESS HYDRAULIC
FRONT LEFT OPENING*

HOISTWAY PLAN

ALL DIMENSIONS ARE SUBJECT TO CHANGE WITHOUT NOTICE.
CONSULT NATIONWIDE LIFTS CO. FOR CONFIRMATION.



P: 888-695-4387, E: info@elevators.com



NOTE: HOISTWAY WIDTH AND DISTANCE FROM PLATFORM TO HOISTWAY WALL WILL VARY BASED ON SIZE OF JACK, TRAVEL, AND CAPACITY. CONSULT DEI ENGINEERING.

HOISTWAY PLAN

ALL DIMENSIONS ARE SUBJECT TO CHANGE WITHOUT NOTICE.
CONSULT NATIONWIDE LIFTS CO. FOR CONFIRMATION.

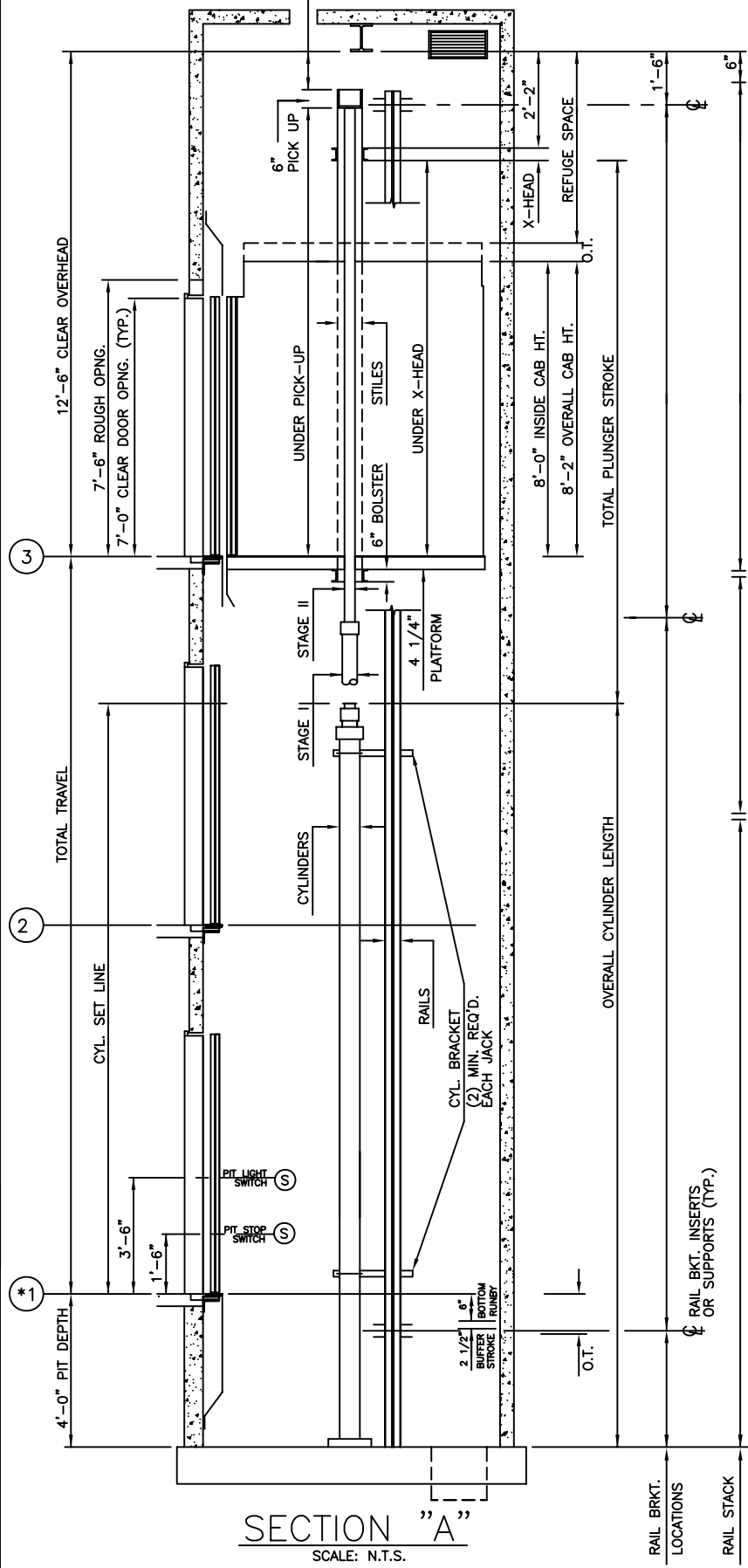
2500 LBS. 2 STAGE HOLELESS HYDRAULIC
FRONT CENTER OPENING

Nationwide Lifts
www.elevators.com

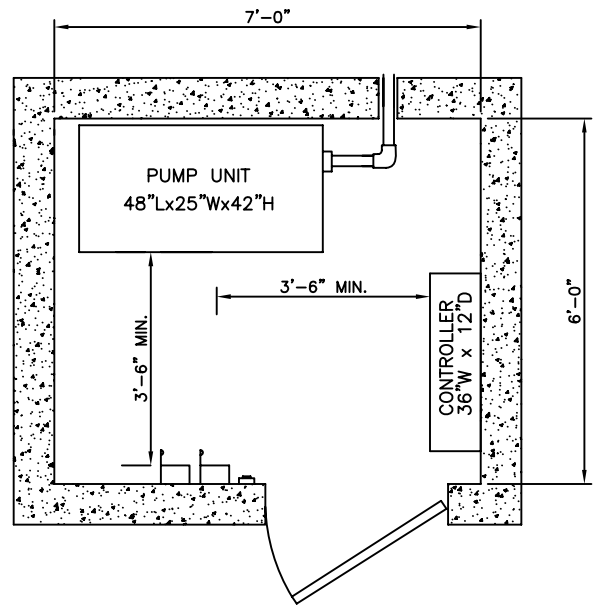
P: 888-695-4387, E: info@elevators.com

2500 LBS. 2 STAGE HOLELESS HYDRAULIC

FRONT OPENING



SECTION "A"
SCALE: N.T.S.



MACHINE ROOM DETAIL

ELEVATION PLAN

 **Nationwide Lifts**
www.elevators.com

P: 888-695-4387, E: info@elevators.com