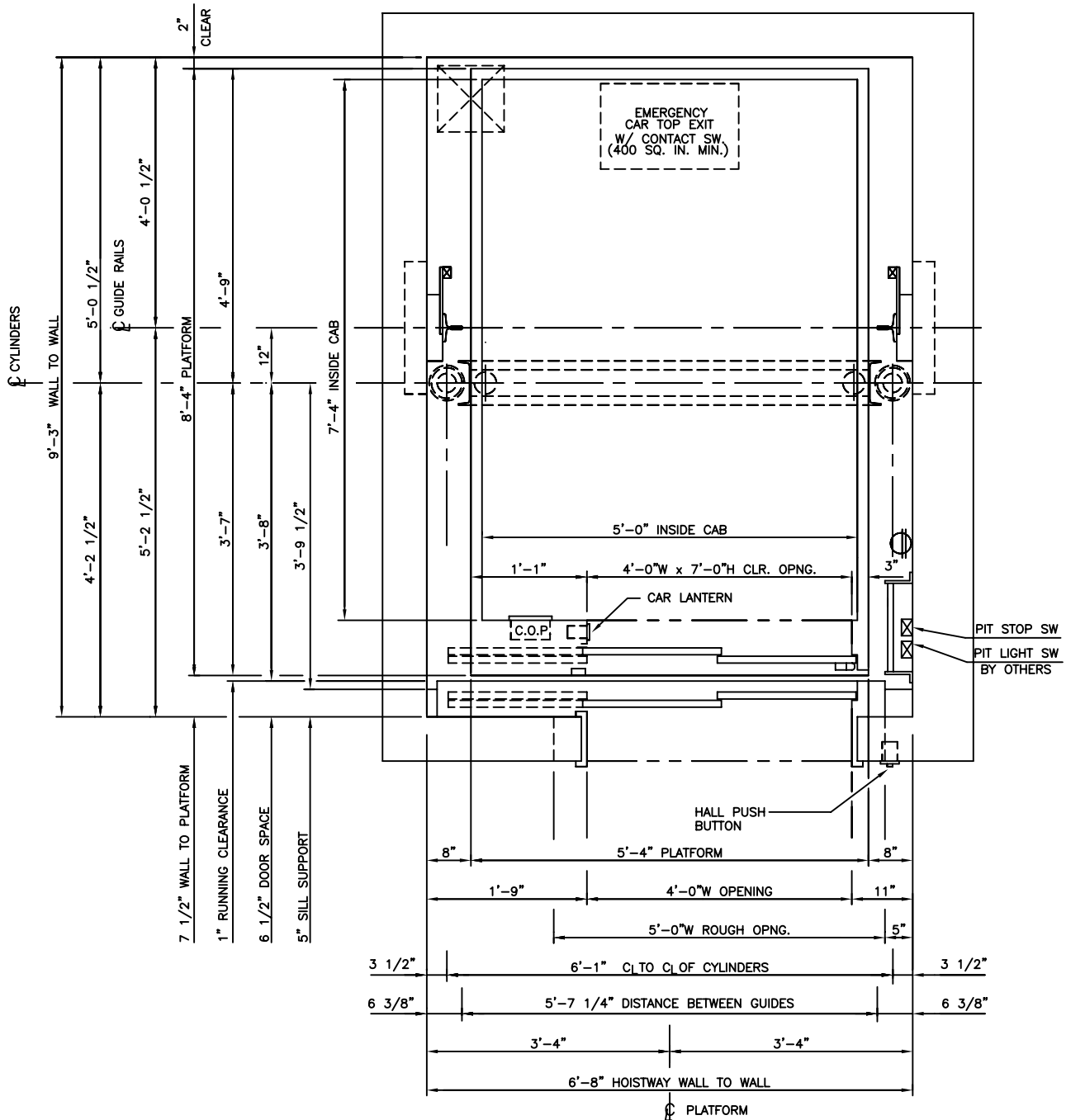


3500 LBS. HOSPITAL 2 STAGE HOLELESS HYDRAULIC FRONT RIGHT OPENING



NOTE: HOISTWAY WIDTH AND DISTANCE FROM PLATFORM TO HOISTWAY WALL WILL VARY BASED ON SIZE OF JACK, TRAVEL, AND CAPACITY. CONSULT DEI ENGINEERING.

MEETS 24" X 84"
STRETCHER REQUIREMENTS



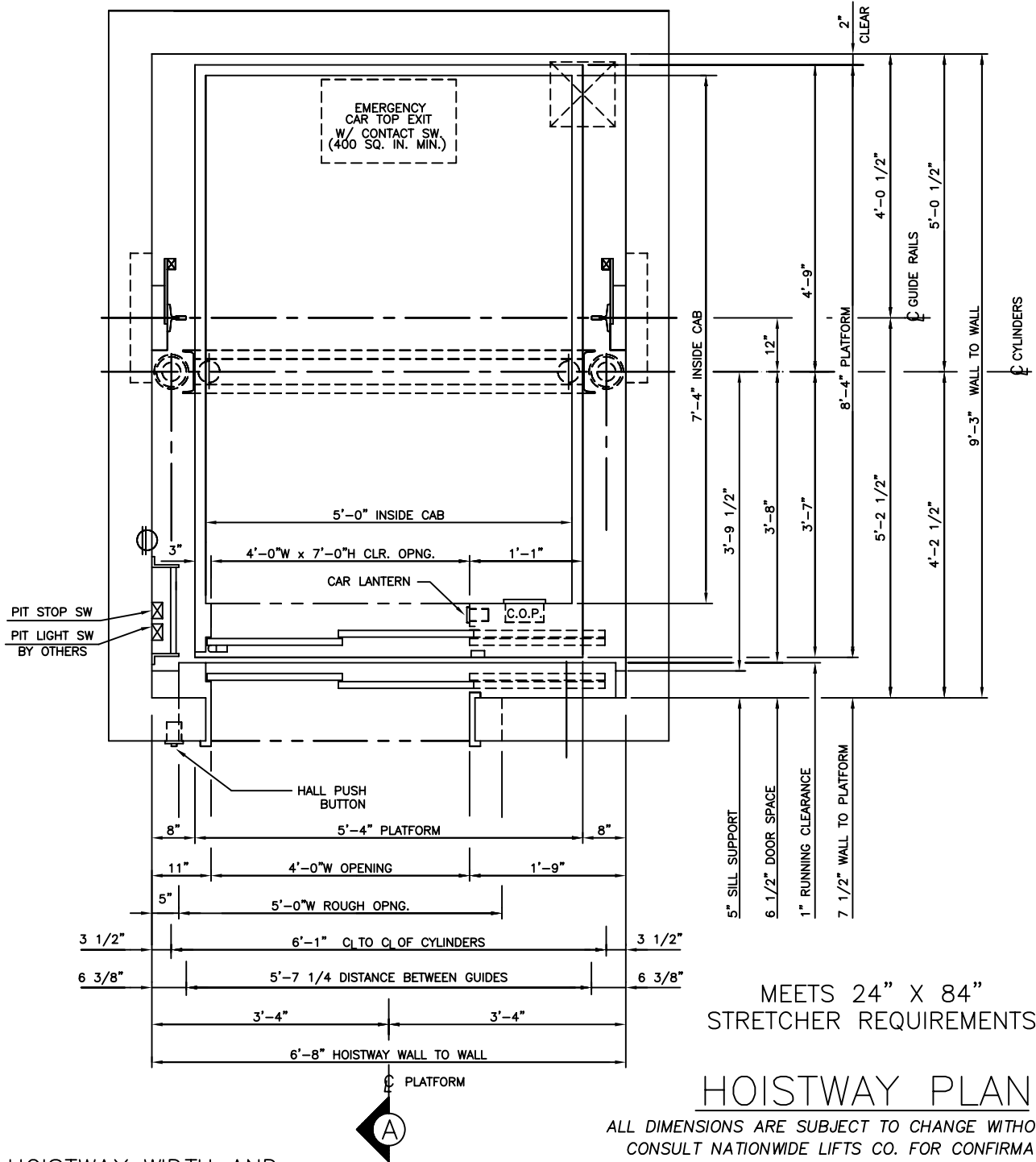
HOISTWAY PLAN

ALL DIMENSIONS ARE SUBJECT TO CHANGE WITHOUT NOTICE.
CONSULT NATIONWIDE LIFTS CO. FOR CONFIRMATION.



P: 888-695-4387, E: info@elevators.com

3500 LBS. HOSPITAL 2 STAGE HOLELESS HYDRAULIC FRONT LEFT OPENING

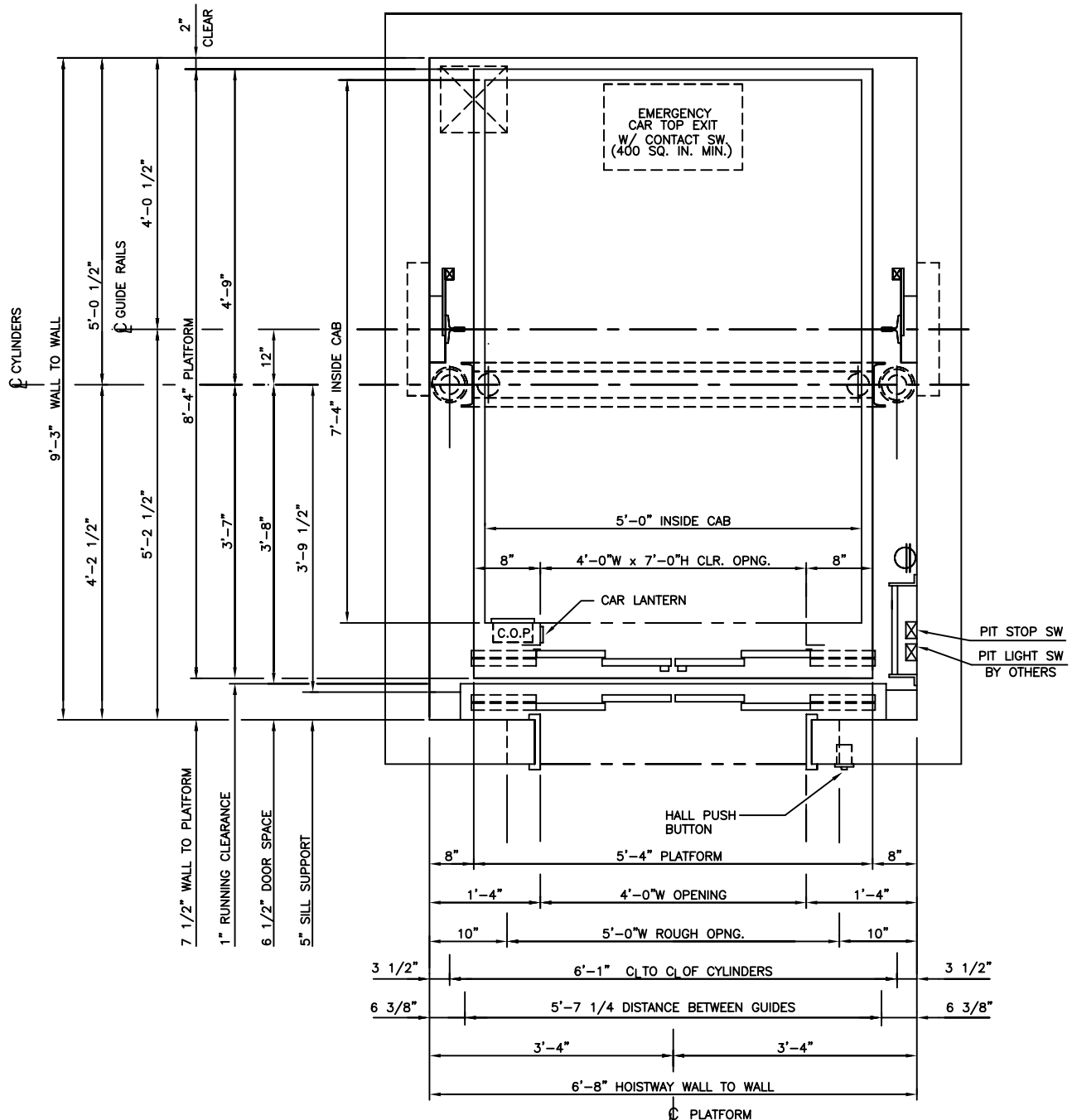


NOTE: HOISTWAY WIDTH AND DISTANCE FROM PLATFORM TO HOISTWAY WALL WILL VARY BASED ON SIZE OF JACK, TRAVEL, AND CAPACITY. CONSULT DEI ENGINEERING.



P: 888-695-4387, E: info@elevators.com

3500 LBS. HOSPITAL 2 STAGE HOLELESS HYDRAULIC FRONT CENTER OPENING



NOTE: HOISTWAY WIDTH AND DISTANCE FROM PLATFORM TO HOISTWAY WALL WILL VARY BASED ON SIZE OF JACK, TRAVEL, AND CAPACITY. CONSULT DEI ENGINEERING.

MEETS 24" X 84"
STRETCHER REQUIREMENTS



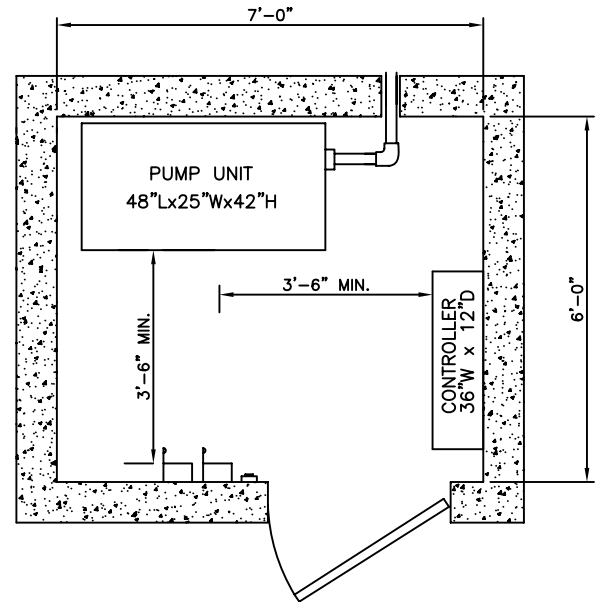
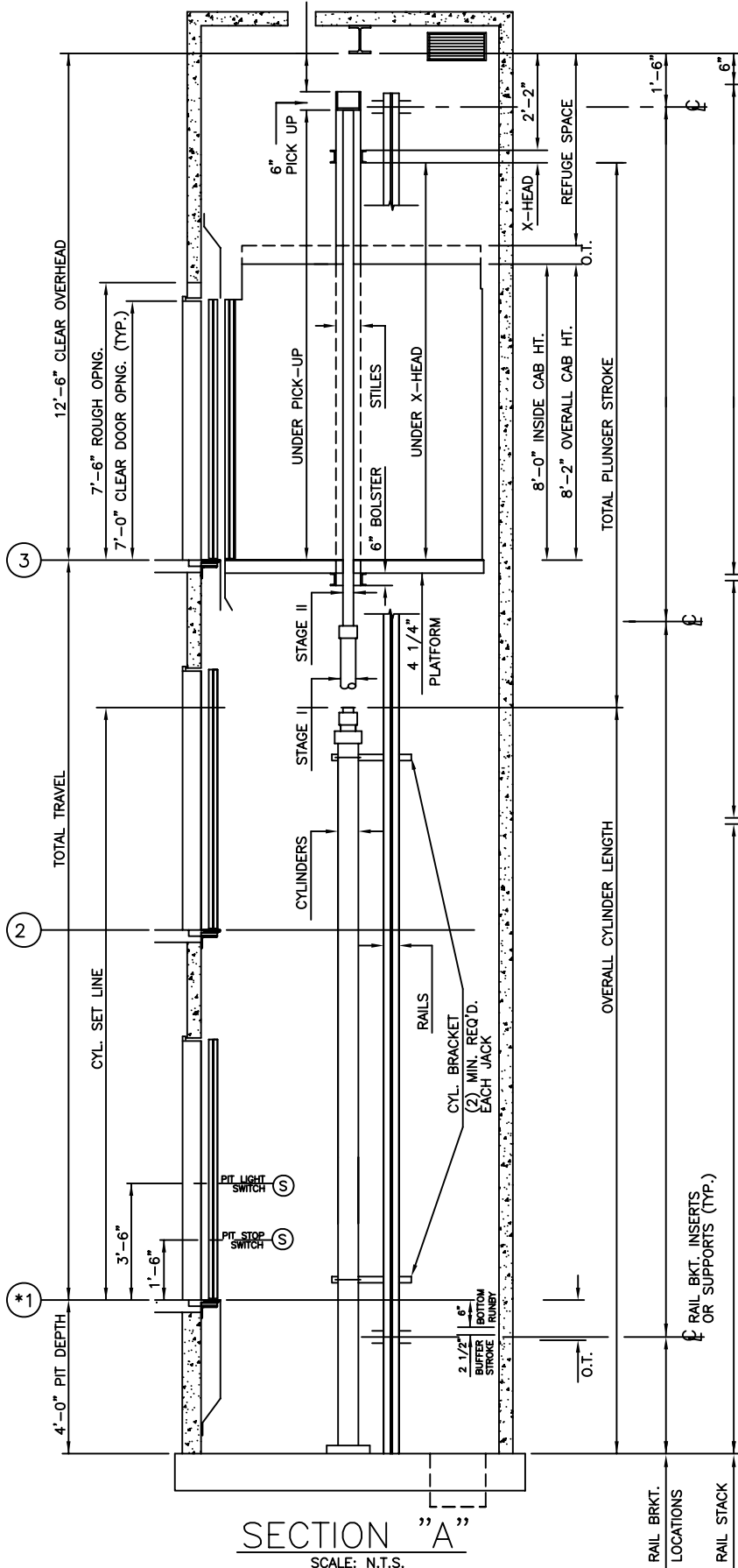
HOISTWAY PLAN

ALL DIMENSIONS ARE SUBJECT TO CHANGE WITHOUT NOTICE.
CONSULT NATIONWIDE LIFTS CO. FOR CONFIRMATION.



P: 888-695-4387, E: info@elevators.com

3500 LBS. HOSPITAL 2 STAGE HOLELESS HYDRAULIC FRONT OPENING



ELEVATION PLAN



P: 888-695-4387, E: info@elevators.com