

NOTE: HOISTWAY WIDTH AND DISTANCE FROM PLATFORM TO HOISTWAY WALL WILL VARY BASED ON SIZE OF JACK, TRAVEL, AND CAPACITY. CONSULT DEI ENGINEERING.

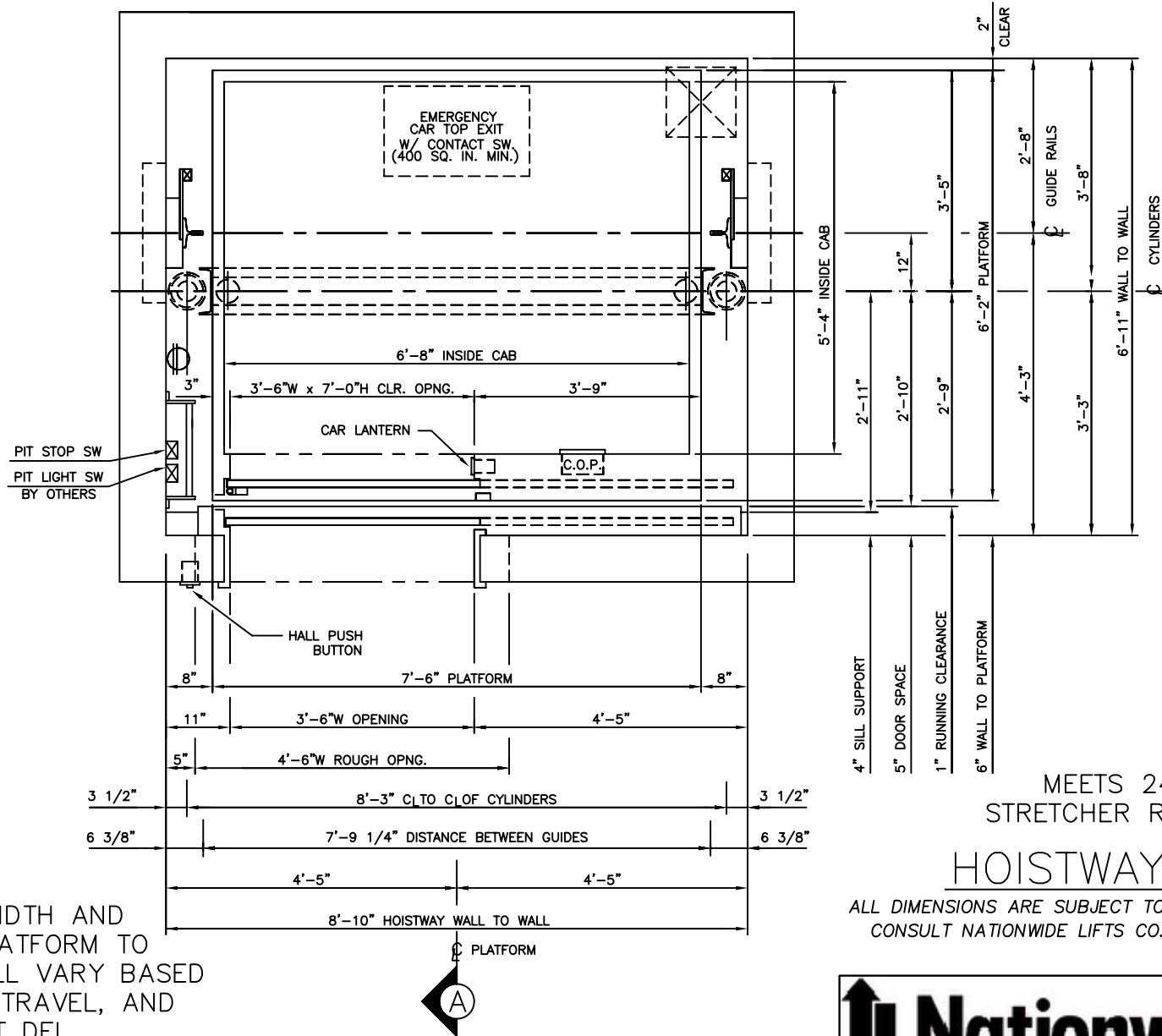
MEETS 24" X 84"  
STRETCHER REQUIREMENTS  
**HOISTWAY PLAN**

ALL DIMENSIONS ARE SUBJECT TO CHANGE WITHOUT NOTICE.  
CONSULT NATIONWIDE LIFTS CO. FOR CONFIRMATION.

*3500 LBS. STRETCHER 2 STAGE HOLELESS HYDRAULIC  
FRONT RIGHT OPENING*



P: 888-695-4387, E: info@elevators.com



NOTE: HOISTWAY WIDTH AND DISTANCE FROM PLATFORM TO HOISTWAY WALL WILL VARY BASED ON SIZE OF JACK, TRAVEL, AND CAPACITY. CONSULT DEI ENGINEERING.

*3500 LBS. STRETCHER 2 STAGE HOLELESS HYDRAULIC FRONT LEFT OPENING*

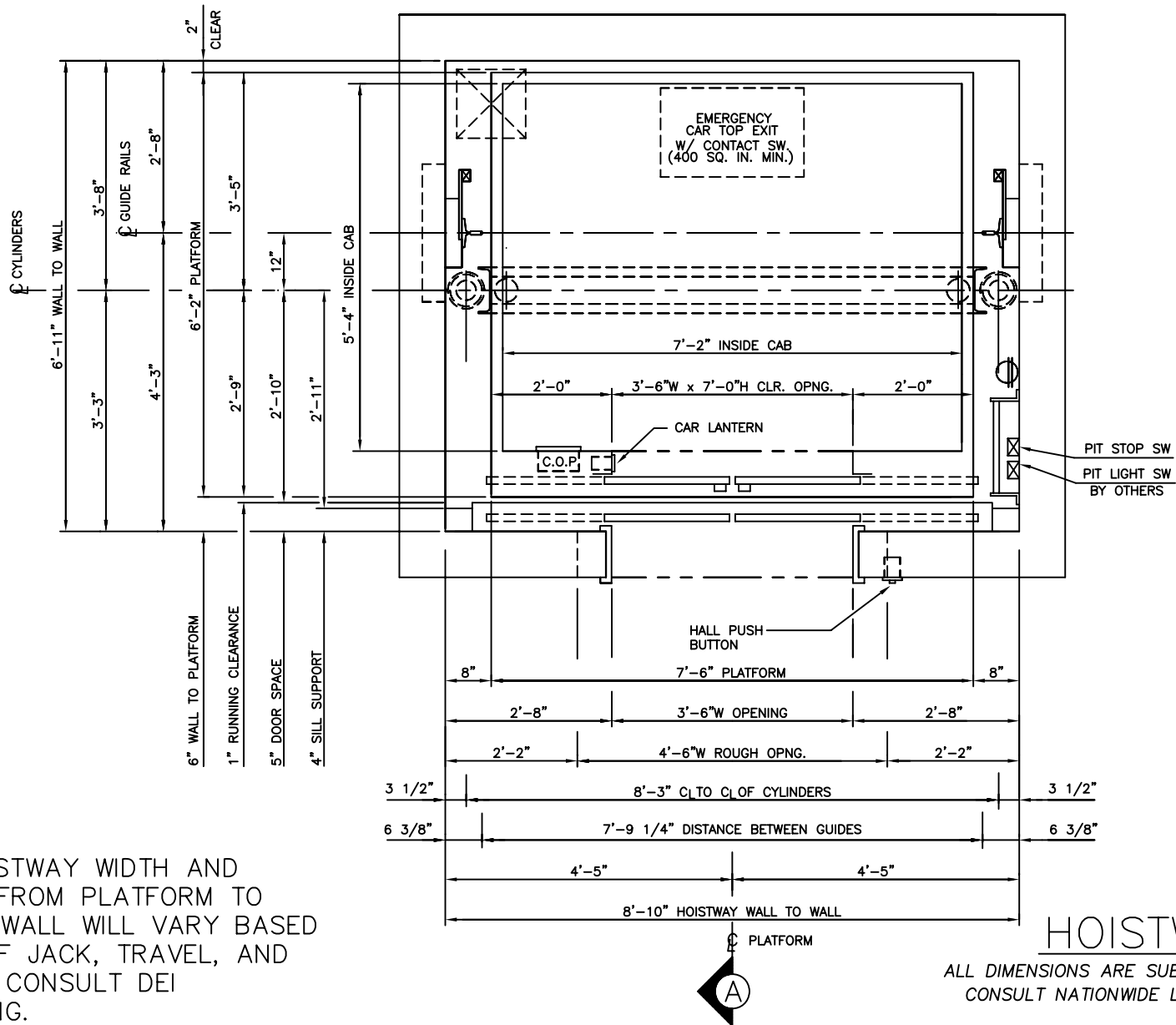
MEETS 24" X 84" STRETCHER REQUIREMENTS

## HOISTWAY PLAN

ALL DIMENSIONS ARE SUBJECT TO CHANGE WITHOUT NOTICE. CONSULT NATIONWIDE LIFTS CO. FOR CONFIRMATION.



P: 888-695-4387, E: info@elevators.com

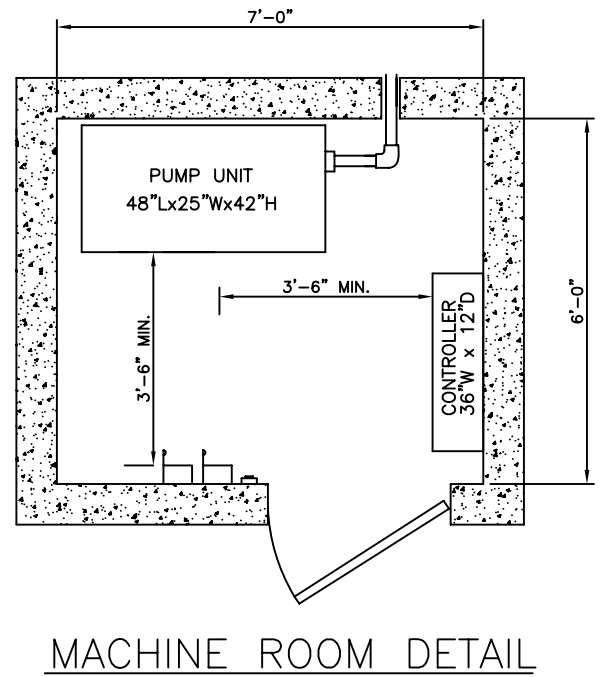
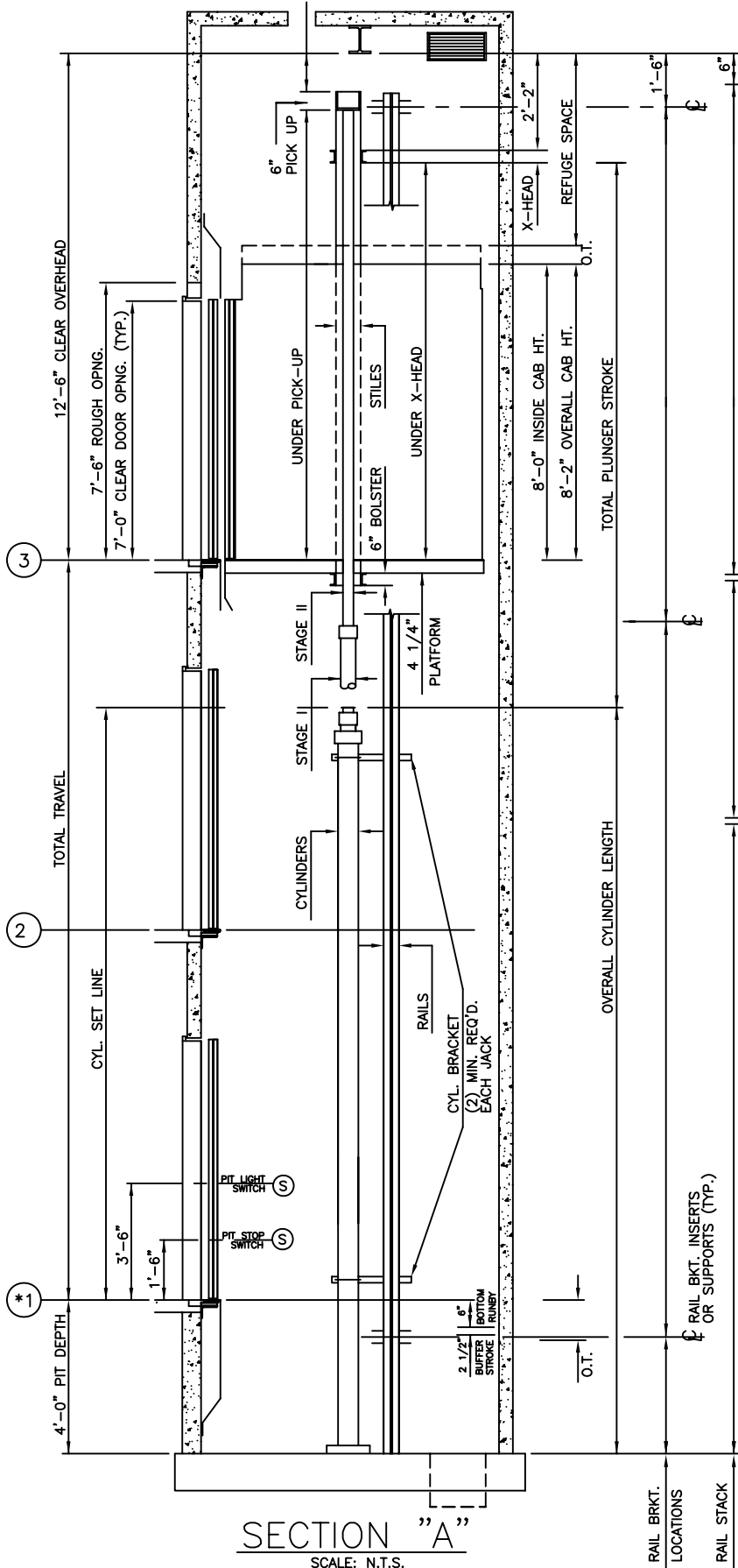


3500 LBS. STRETCHER 2 STAGE HOLELESS HYDRAULIC  
FRONT CENTER OPENING

**Nationwide Lifts**  
www.elevators.com

P: 888-695-4387, E: info@elevators.com

# 3500 LBS. STRETCHER 2 STAGE HOLELESS HYDRAULIC FRONT OPENING



ELEVATION PLAN

 **Nationwide Lifts**  
www.elevators.com

P: 888-695-4387, E: info@elevators.com