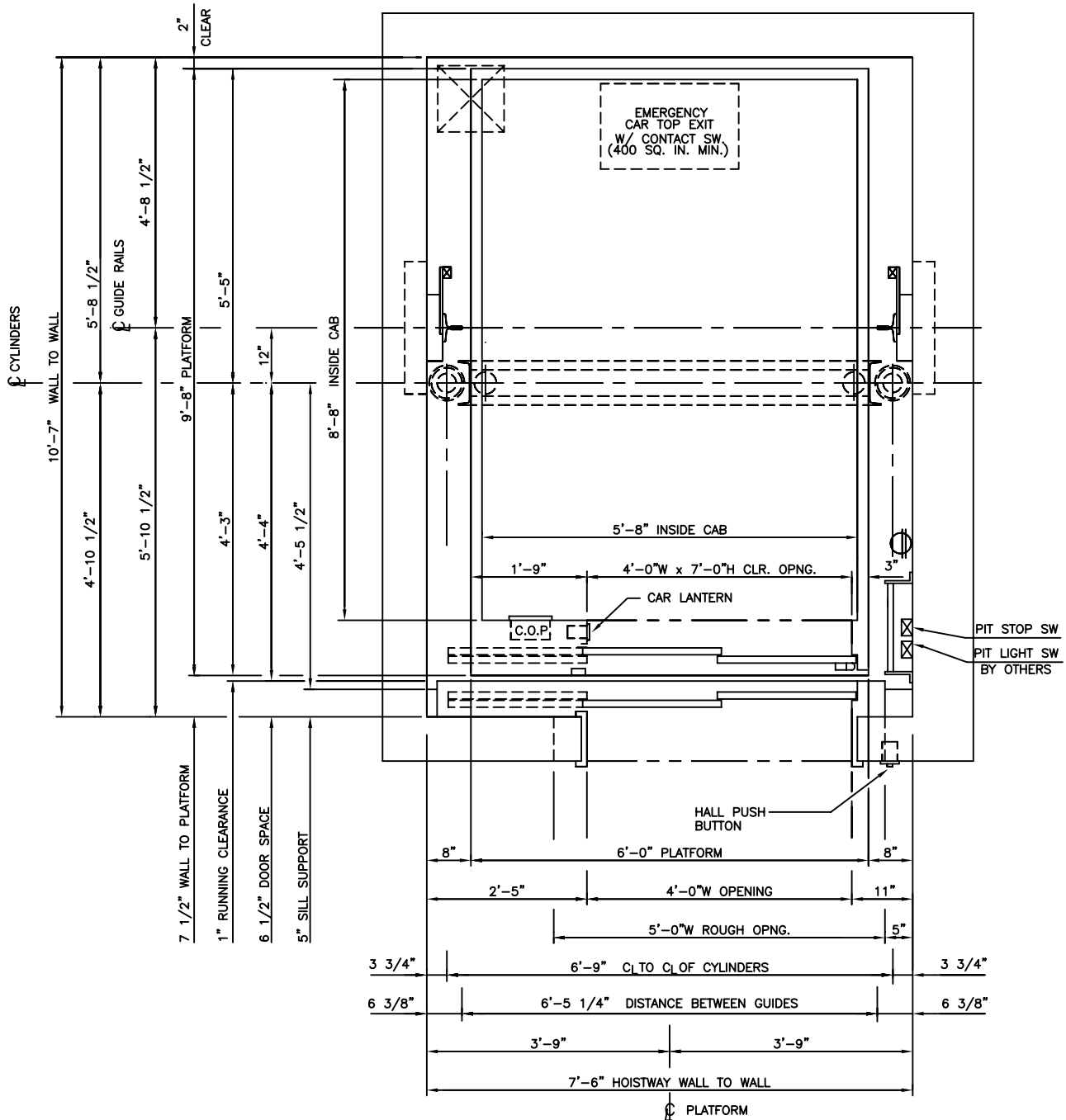


5000 LBS. HOSPITAL 2 STAGE HOLELESS HYDRAULIC FRONT RIGHT OPENING



NOTE: HOISTWAY WIDTH AND DISTANCE FROM PLATFORM TO HOISTWAY WALL WILL VARY BASED ON SIZE OF JACK, TRAVEL, AND CAPACITY. CONSULT DEI ENGINEERING.



HOISTWAY PLAN

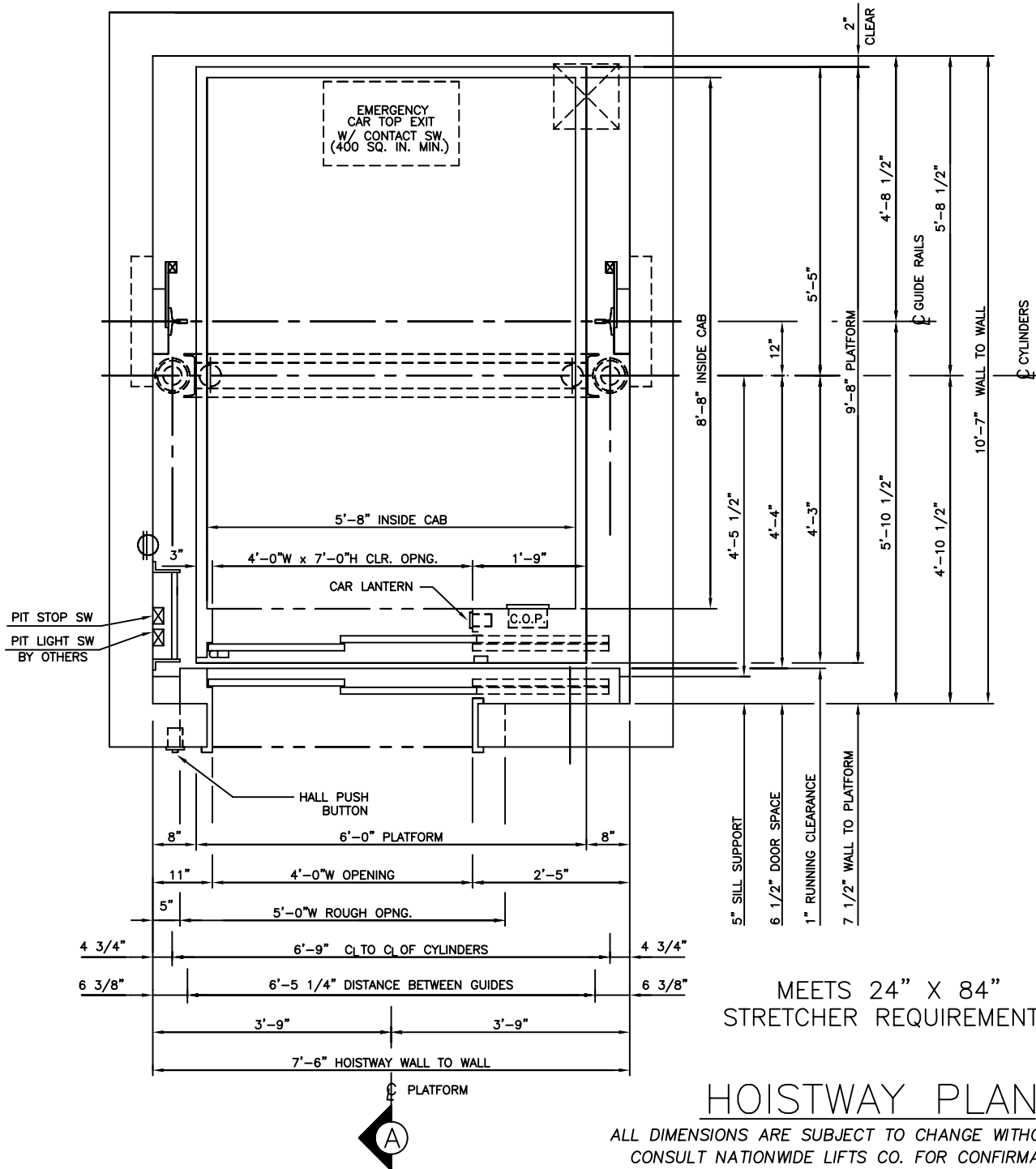
ALL DIMENSIONS ARE SUBJECT TO CHANGE WITHOUT NOTICE.
CONSULT NATIONWIDE LIFTS CO. FOR CONFIRMATION.

MEETS 24" X 84"
STRETCHER REQUIREMENTS

Nationwide Lifts
www.elevators.com

P: 888-695-4387, E: info@elevators.com

5000 LBS. HOSPITAL 2 STAGE HOLELESS HYDRAULIC FRONT LEFT OPENING

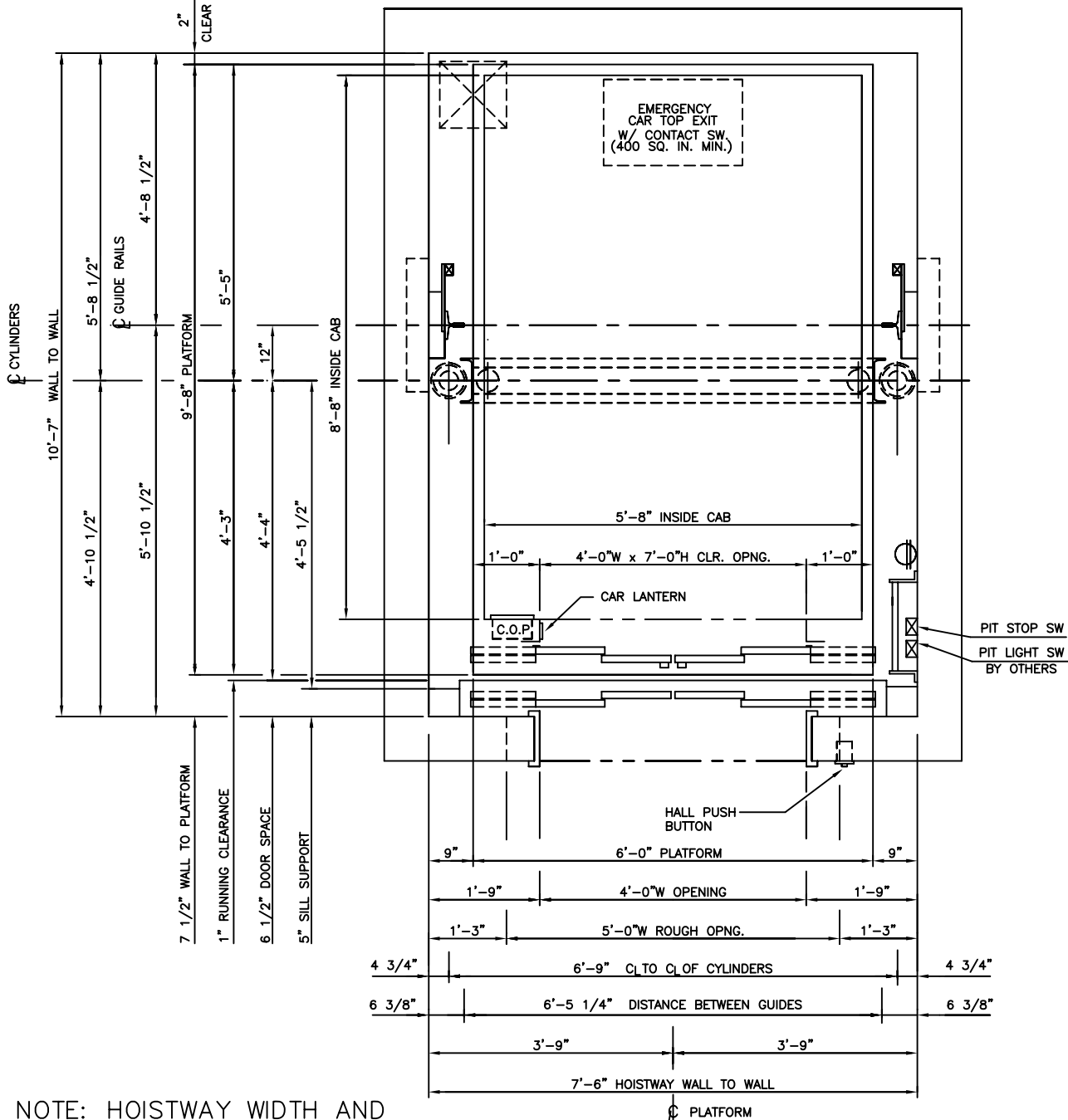


NOTE: HOISTWAY WIDTH AND DISTANCE FROM PLATFORM TO HOISTWAY WALL WILL VARY BASED ON SIZE OF JACK, TRAVEL, AND CAPACITY. CONSULT DEI ENGINEERING.

Nationwide Lifts
www.elevators.com

P: 888-695-4387, E: info@elevators.com

5000 LBS. HOSPITAL 2 STAGE HOLELESS HYDRAULIC FRONT CENTER OPENING



NOTE: HOISTWAY WIDTH AND DISTANCE FROM PLATFORM TO HOISTWAY WALL WILL VARY BASED ON SIZE OF JACK, TRAVEL, AND CAPACITY. CONSULT DEI ENGINEERING.



HOISTWAY PLAN

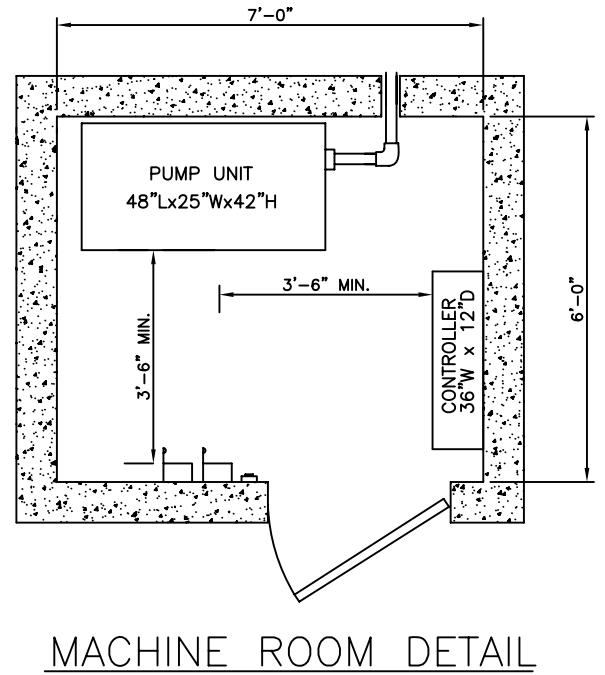
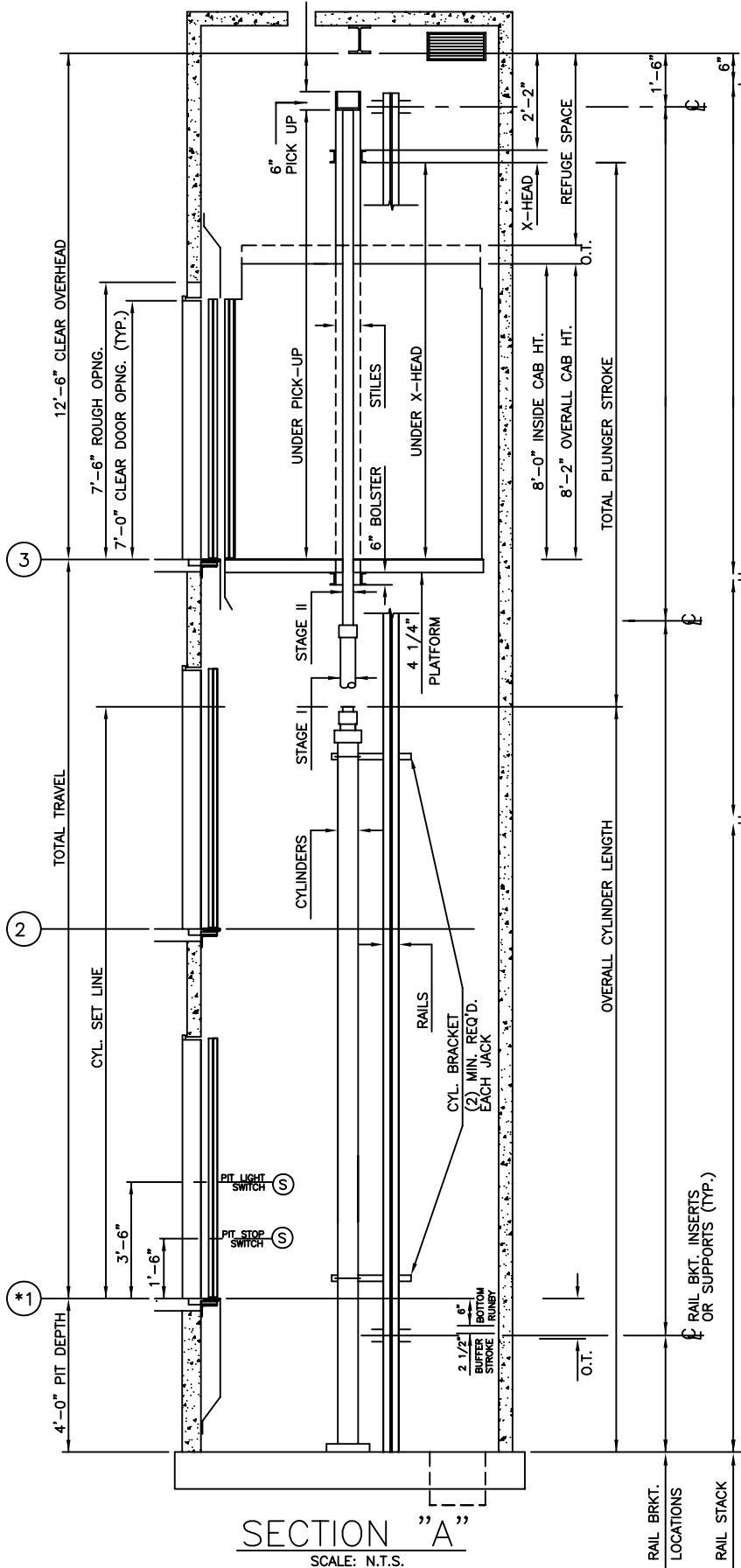
ALL DIMENSIONS ARE SUBJECT TO CHANGE WITHOUT NOTICE. CONSULT NATIONWIDE LIFTS CO. FOR CONFIRMATION.

MEETS 24" X 84"
STRETCHER REQUIREMENTS



P: 888-695-4387, E: info@elevators.com

5000 LBS. HOSPITAL 2 STAGE HOLELESS HYDRAULIC FRONT OPENING



ELEVATION PLAN

 **Nationwide Lifts**
www.elevators.com

P: 888-695-4387, E: info@elevators.com