

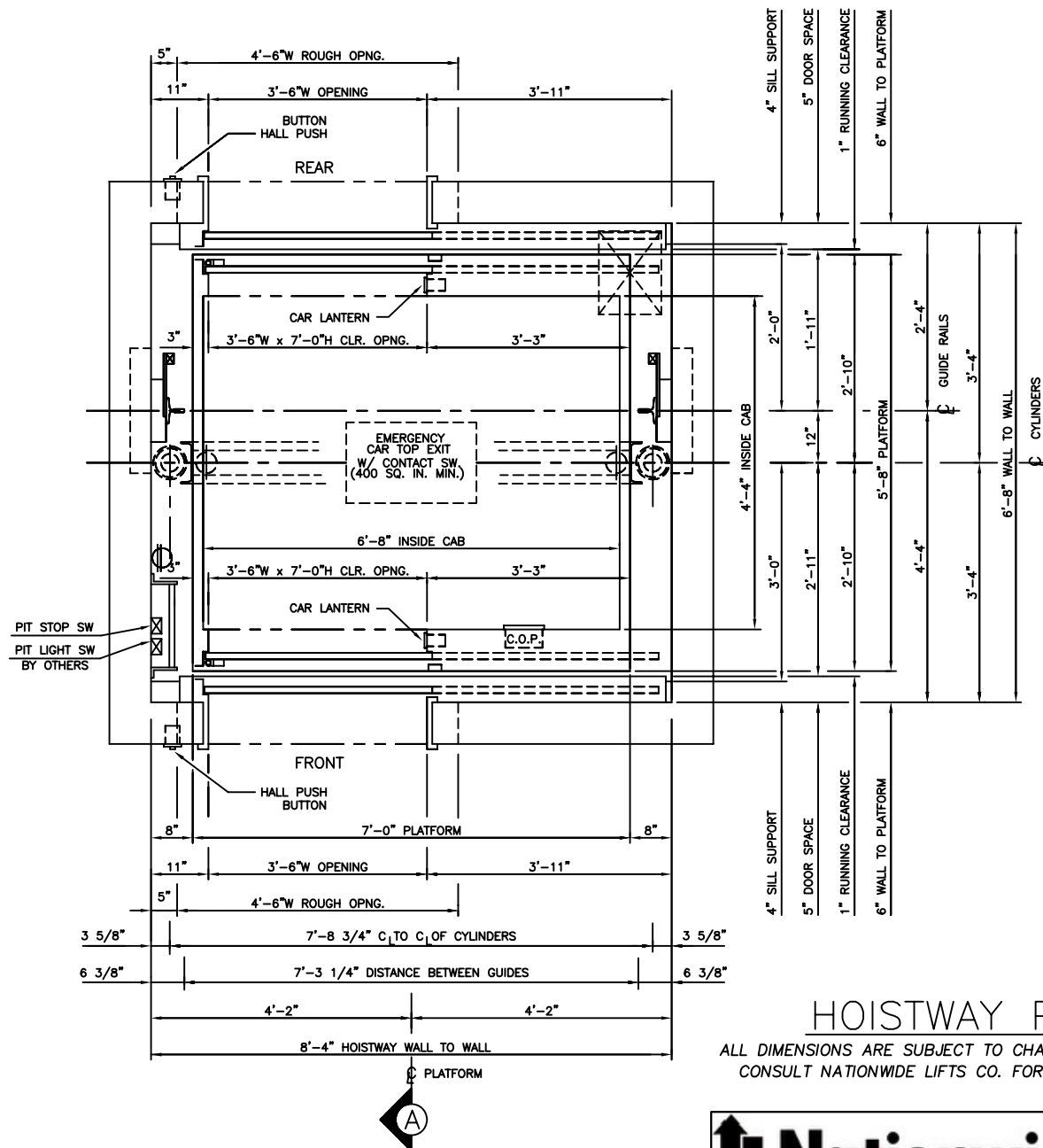
2500 LBS. HOLELESS HYDRAULIC  
FRONT & REAR RIGHT OPENING

**HOISTWAY PLAN**  
ALL DIMENSIONS ARE SUBJECT TO CHANGE WITHOUT NOTICE.  
CONSULT NATIONWIDE LIFTS CO. FOR CONFIRMATION.



**Nationwide Lifts**  
[www.elevators.com](http://www.elevators.com)

P: 888-695-4387, E: info@elevators.com



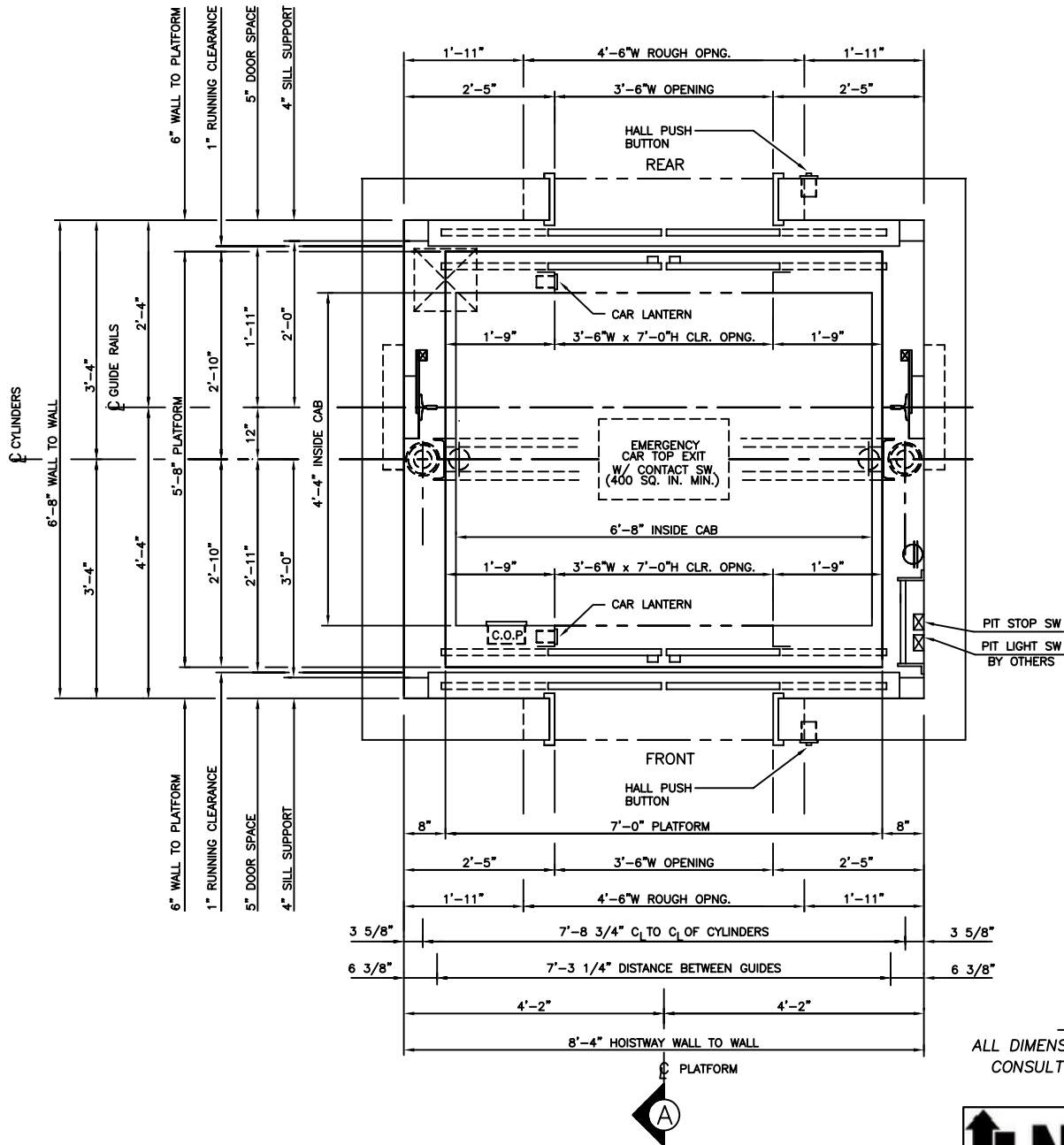
## HOISTWAY PLAN

ALL DIMENSIONS ARE SUBJECT TO CHANGE WITHOUT NOTICE.  
CONSULT NATIONWIDE LIFTS CO. FOR CONFIRMATION.

2500 LBS. HOLELESS HYDRAULIC  
FRONT & REAR LEFT OPENING



P: 888-695-4387, E: info@elevators.com



2500 LBS. HOLELESS HYDRAULIC  
FRONT & REAR CENTER OPENING

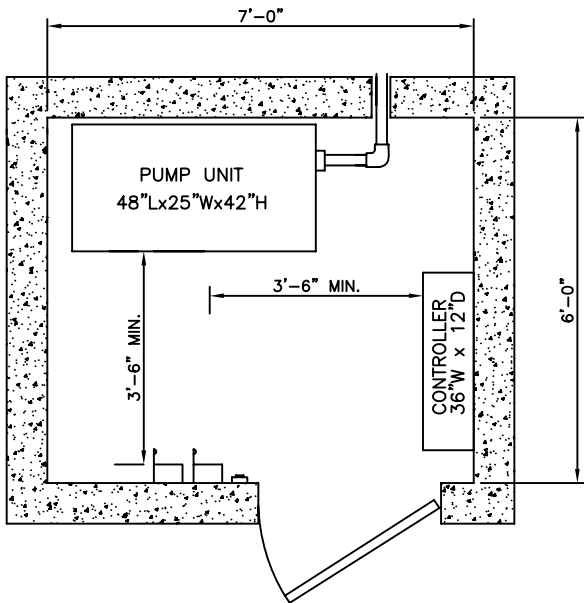
HOISTWAY PLAN  
ALL DIMENSIONS ARE SUBJECT TO CHANGE WITHOUT NOTICE.  
CONSULT NATIONWIDE LIFTS CO. FOR CONFIRMATION.



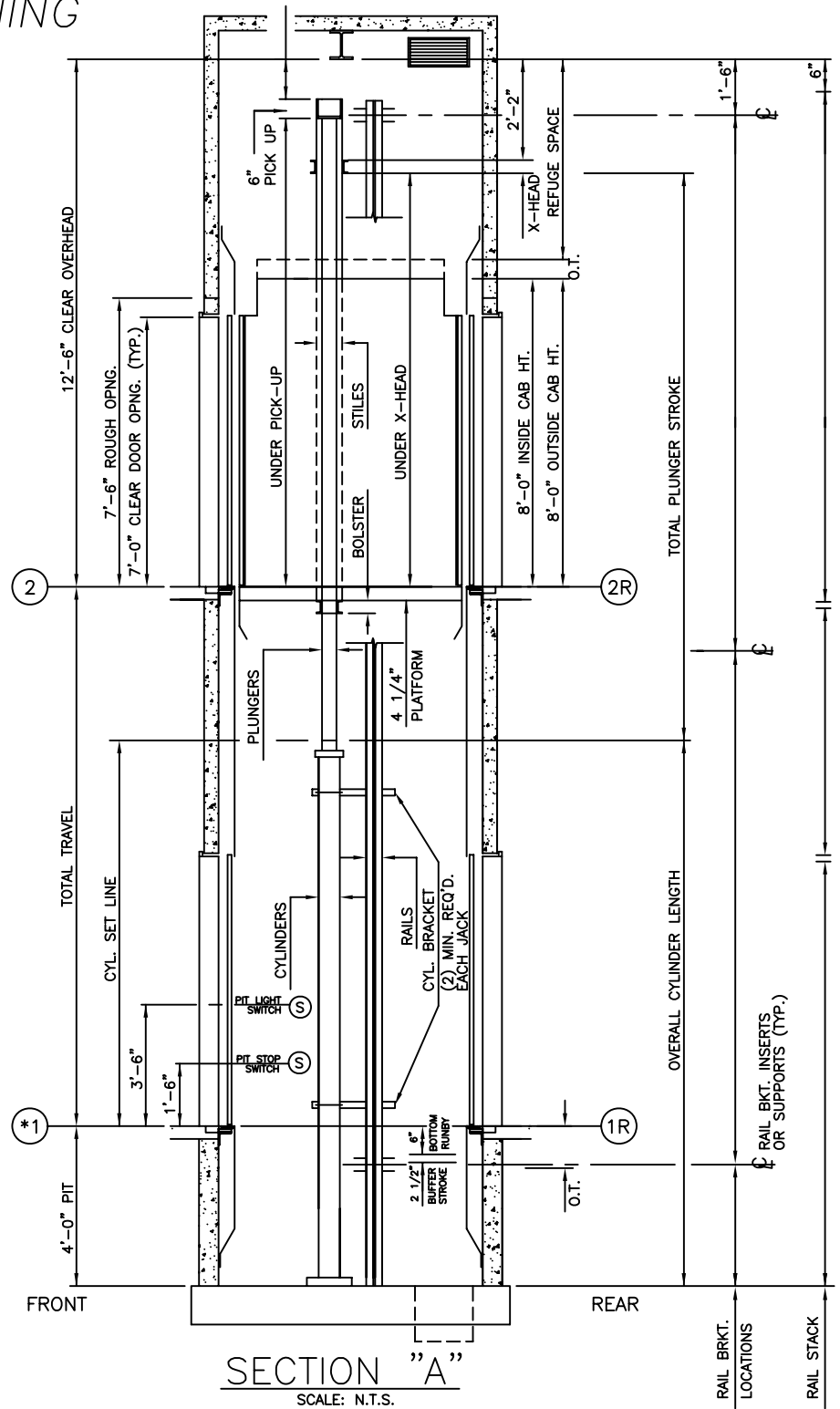
P: 888-695-4387, E: info@elevators.com

# 2500 LBS. HOLELESS HYDRAULIC FRONT & REAR OPENING

NOTE:  
WITH STANDARD 4'-0" PIT AND 12'-6"  
OVERHEAD, MAXIMUM TRAVEL AT  
100 F.P.M. IS 13'-0". FOR TRAVELS  
EXCEEDING 13'-0", CONSULT D.E.I.  
ENGINEERING DEPARTMENT.



MACHINE ROOM DETAIL



ELEVATION PLAN



P: 888-695-4387, E: info@elevators.com