

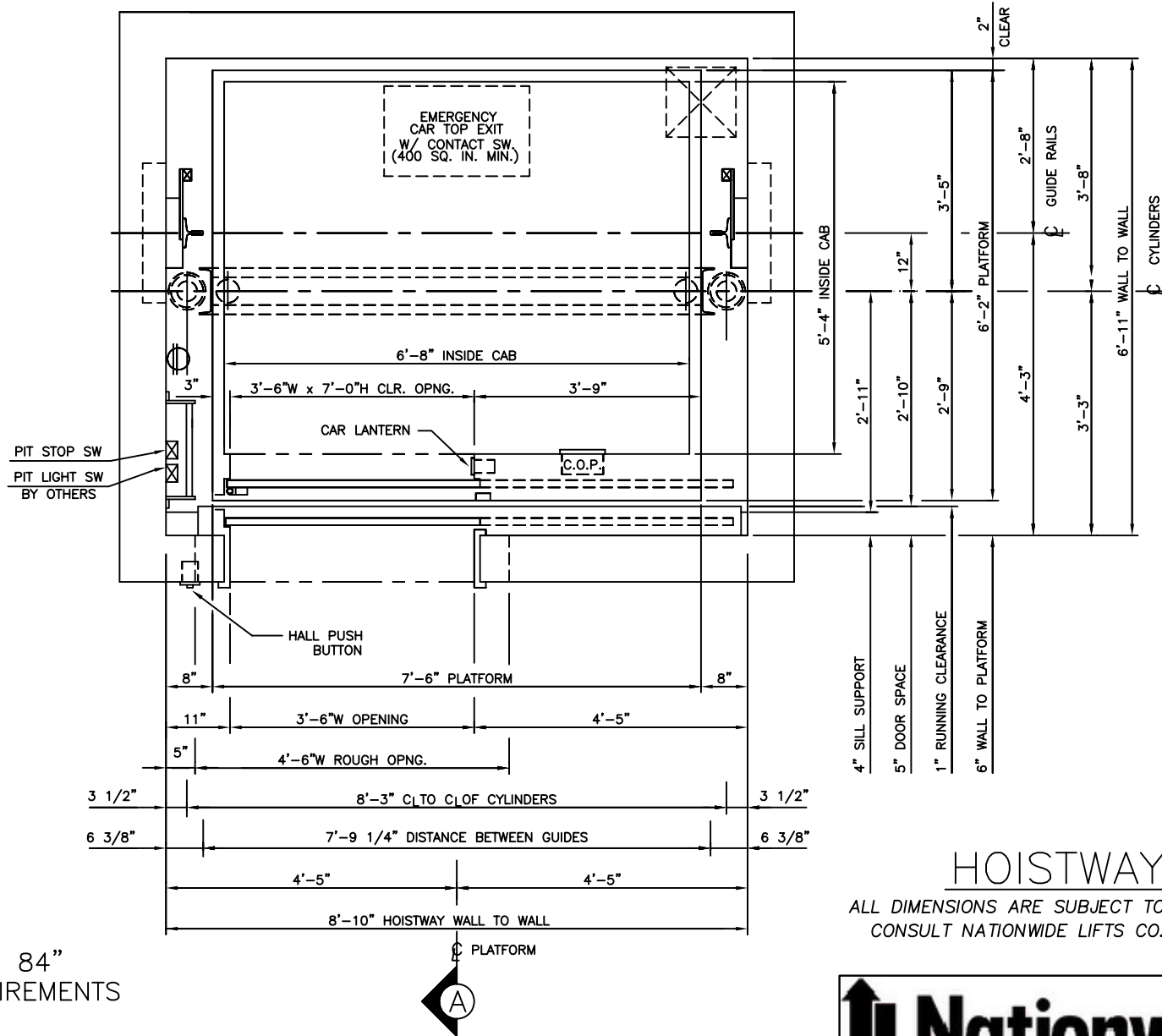
MEETS 24" X 84"  
STRETCHER REQUIREMENTS

*3500 LBS. STRETCHER HOLELESS HYDRAULIC  
FRONT RIGHT OPENING*

**HOISTWAY PLAN**  
ALL DIMENSIONS ARE SUBJECT TO CHANGE WITHOUT NOTICE.  
CONSULT NATIONWIDE LIFTS CO. FOR CONFIRMATION.



P: 888-695-4387, E: info@elevators.com



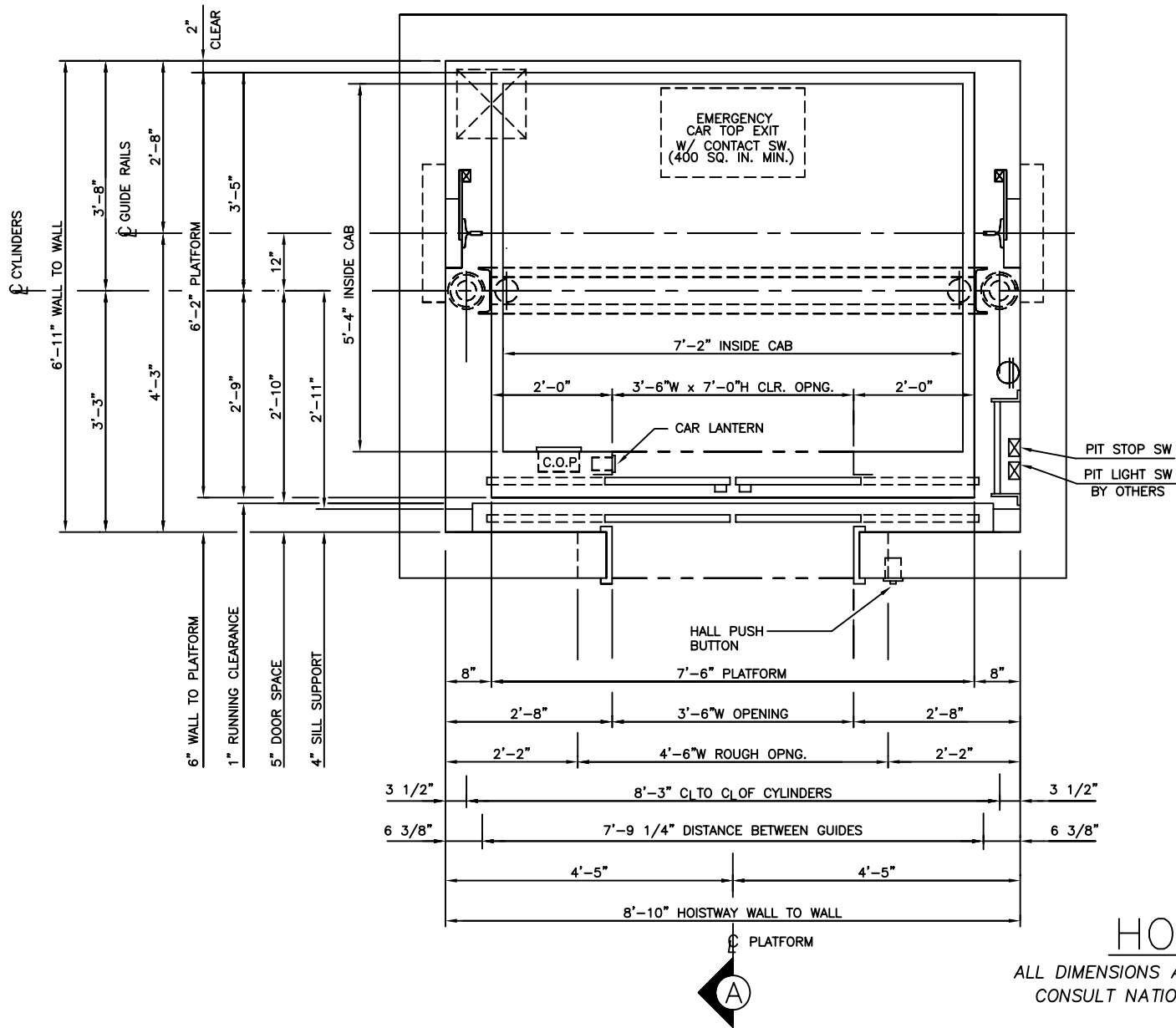
MEETS 24" X 84"  
STRETCHER REQUIREMENTS

*3500 LBS. STRETCHER HOLELESS HYDRAULIC  
FRONT LEFT OPENING*

**HOISTWAY PLAN**  
ALL DIMENSIONS ARE SUBJECT TO CHANGE WITHOUT NOTICE.  
CONSULT NATIONWIDE LIFTS CO. FOR CONFIRMATION.

**Nationwide Lifts**  
[www.elevators.com](http://www.elevators.com)

P: 888-695-4387, E: info@elevators.com



## HOISTWAY PLAN

ALL DIMENSIONS ARE SUBJECT TO CHANGE WITHOUT NOTICE.  
CONSULT NATIONWIDE LIFTS CO. FOR CONFIRMATION.

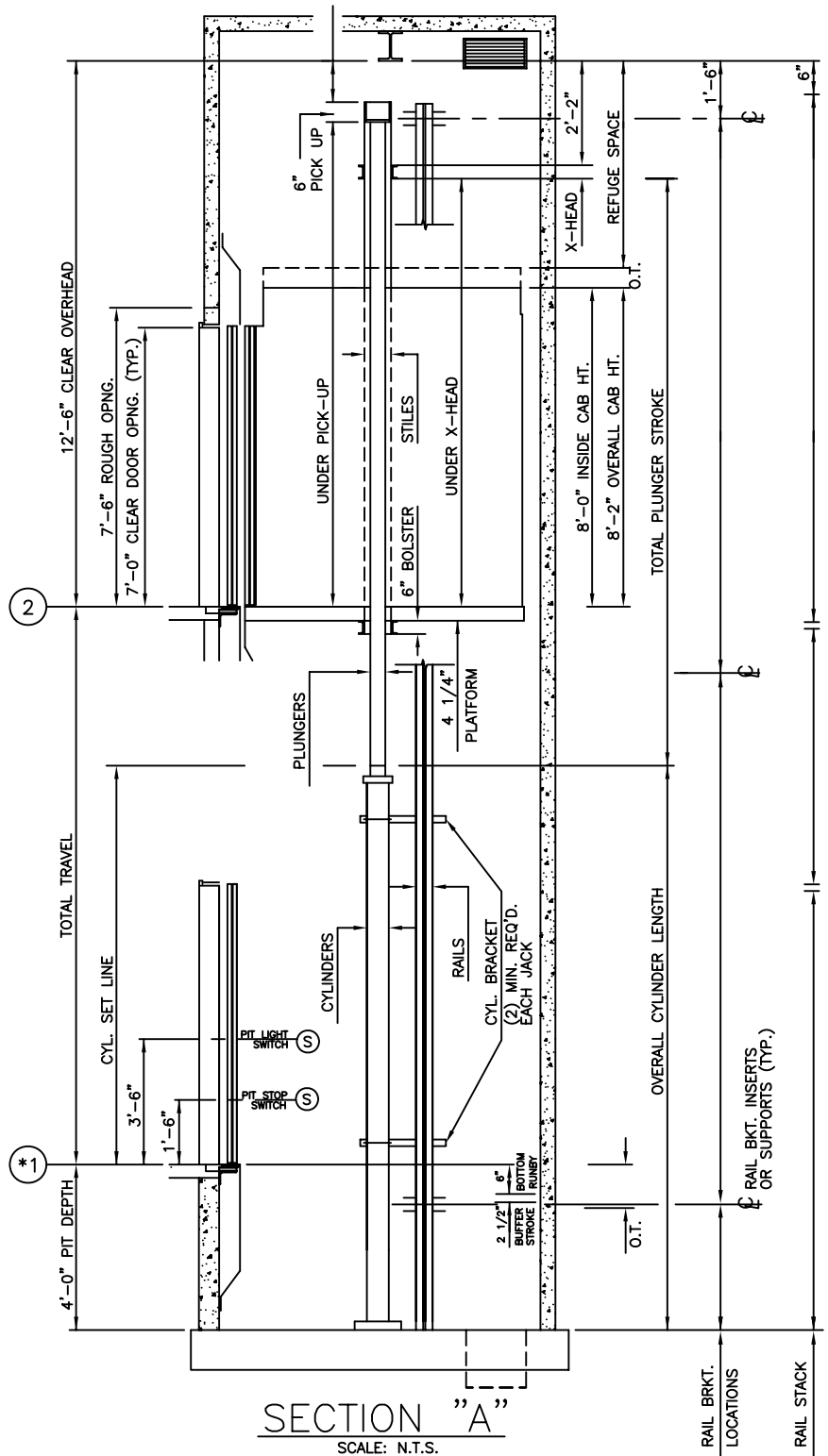
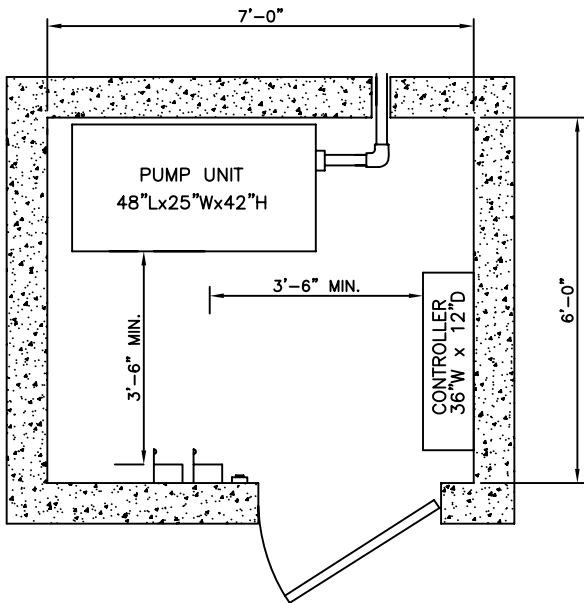
3500 LBS. STRETCHER HOLELESS HYDRAULIC  
FRONT CENTER OPENING

 **Nationwide Lifts**  
www.elevators.com

P: 888-695-4387, E: info@elevators.com

# 3500 LBS. STRETCHER HOLELESS HYDRAULIC FRONT OPENING

NOTE:  
WITH STANDARD 4'-0" PIT AND 12'-6"  
OVERHEAD, MAXIMUM TRAVEL AT  
100 F.P.M. IS 13'-0". FOR TRAVELS  
EXCEEDING 13'-0", CONSULT D.E.I.  
ENGINEERING DEPARTMENT.



## ELEVATION PLAN

MACHINE ROOM DETAIL



P: 888-695-4387, E: info@elevators.com