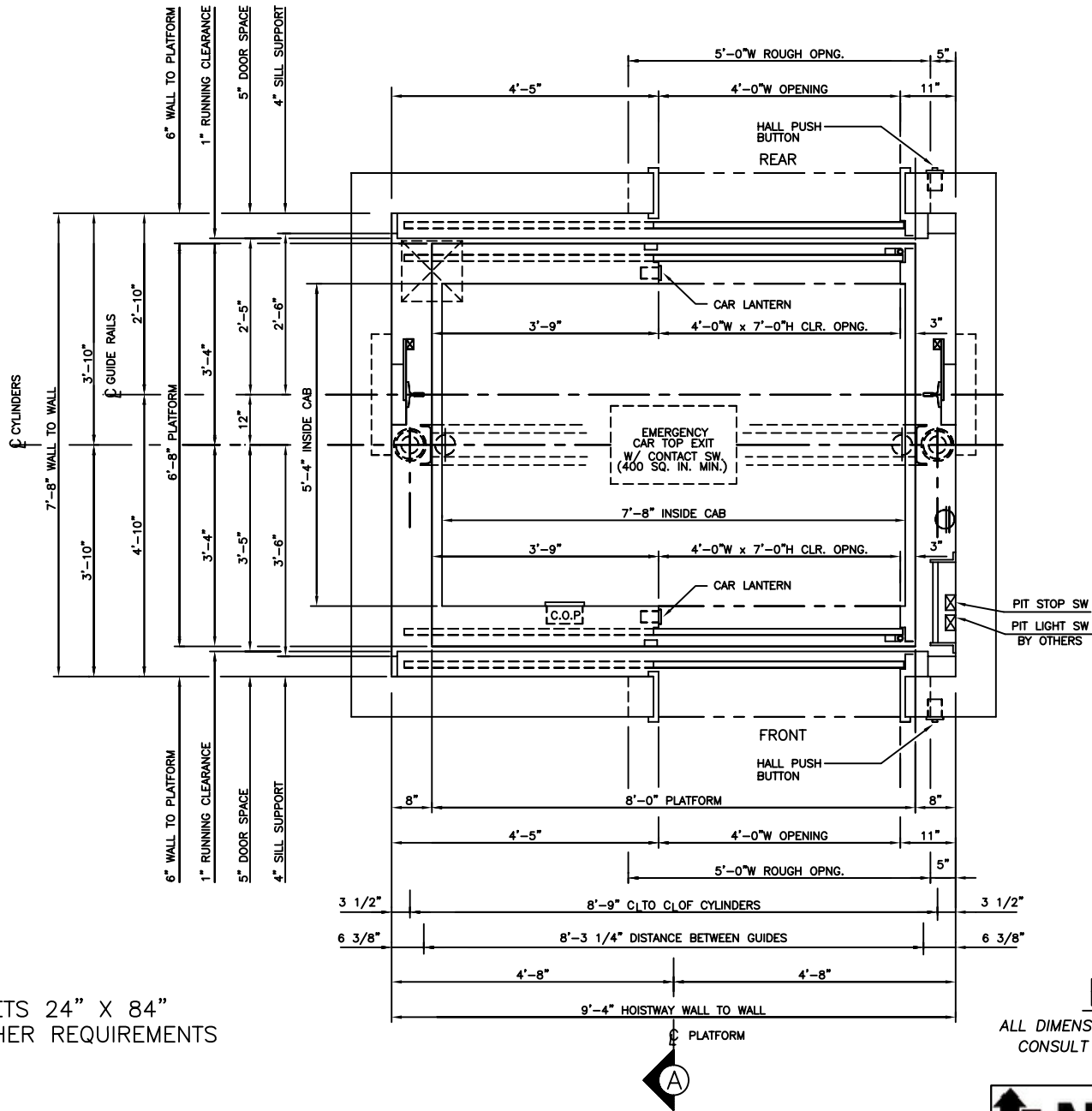


MEETS 24" X 84"
STRETCHER REQUIREMENTS



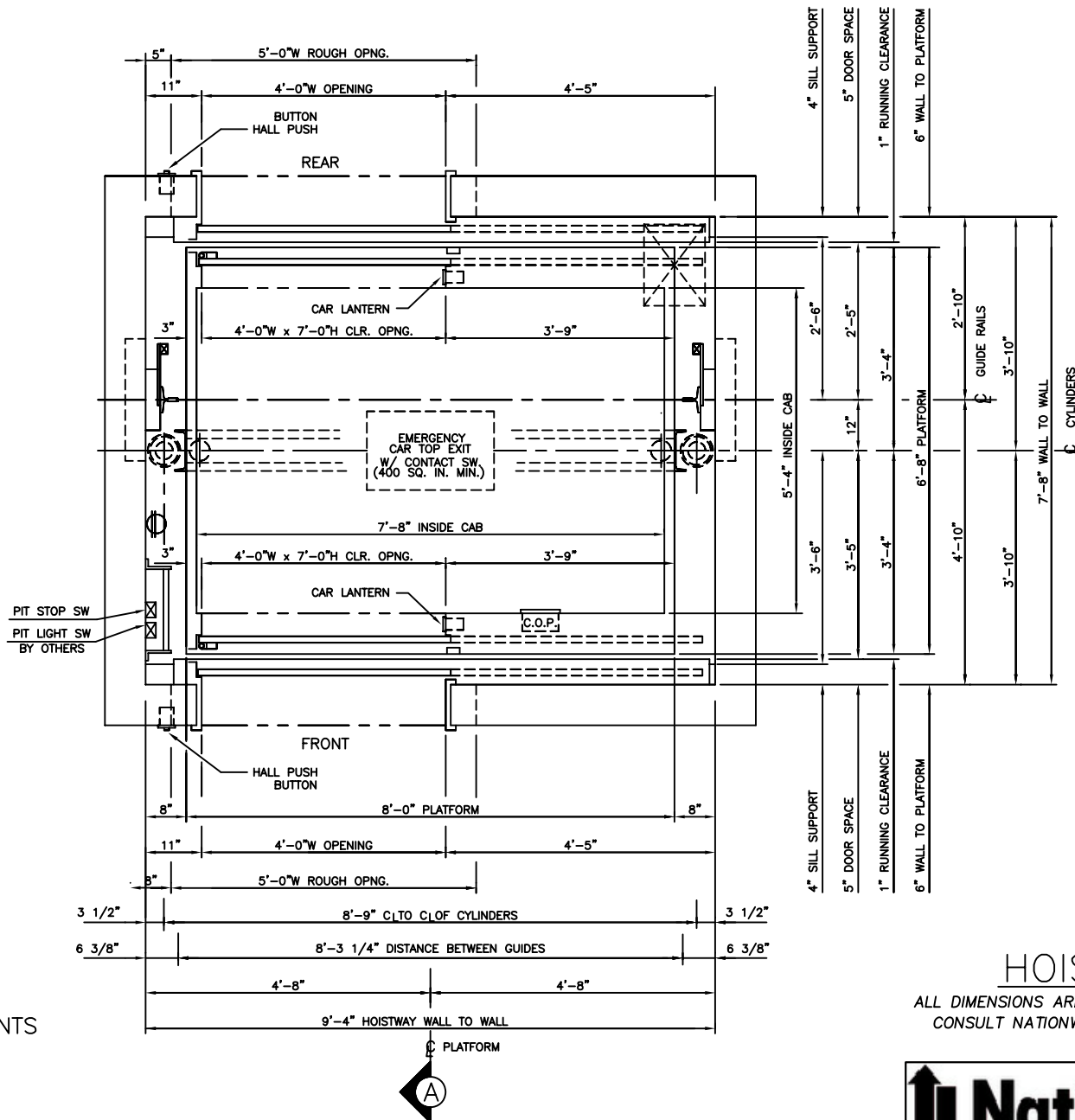
*4000 LBS. HOLELESS HYDRAULIC
FRONT & REAR RIGHT OPENING*

HOISTWAY PLAN

ALL DIMENSIONS ARE SUBJECT TO CHANGE WITHOUT NOTICE.
CONSULT NATIONWIDE LIFTS CO. FOR CONFIRMATION.



P: 888-695-4387, E: info@elevators.com



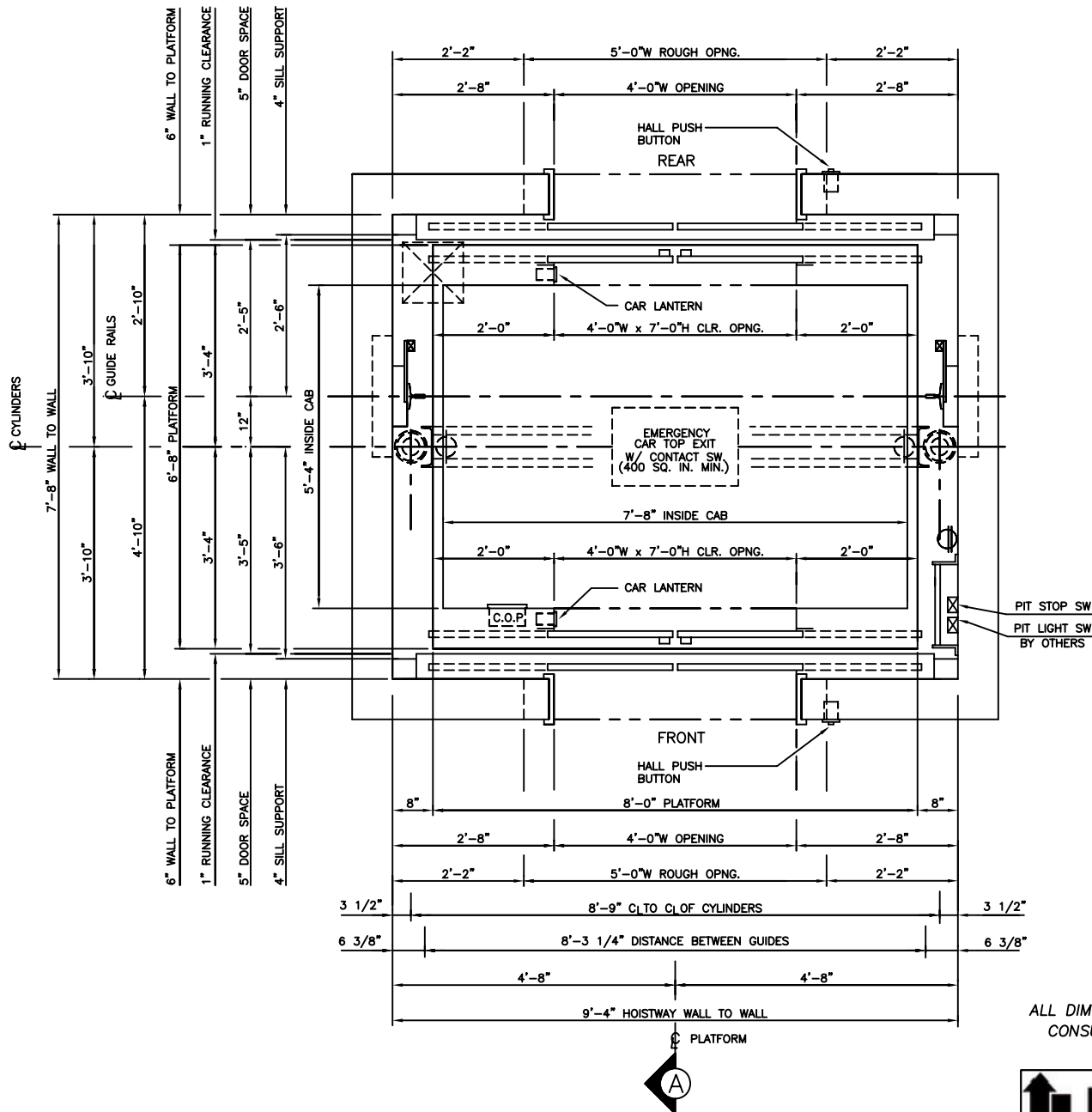
MEETS 24" X 84" STRETCHER REQUIREMENTS

4000 LBS. HOLELESS HYDRAULIC FRONT & REAR LEFT OPENING

HOISTWAY PLAN
 ALL DIMENSIONS ARE SUBJECT TO CHANGE WITHOUT NOTICE.
 CONSULT NATIONWIDE LIFTS CO. FOR CONFIRMATION.



P: 888-695-4387, E: info@elevators.com



HOISTWAY PLAN

ALL DIMENSIONS ARE SUBJECT TO CHANGE WITHOUT NOTICE.
CONSULT NATIONWIDE LIFTS CO. FOR CONFIRMATION.

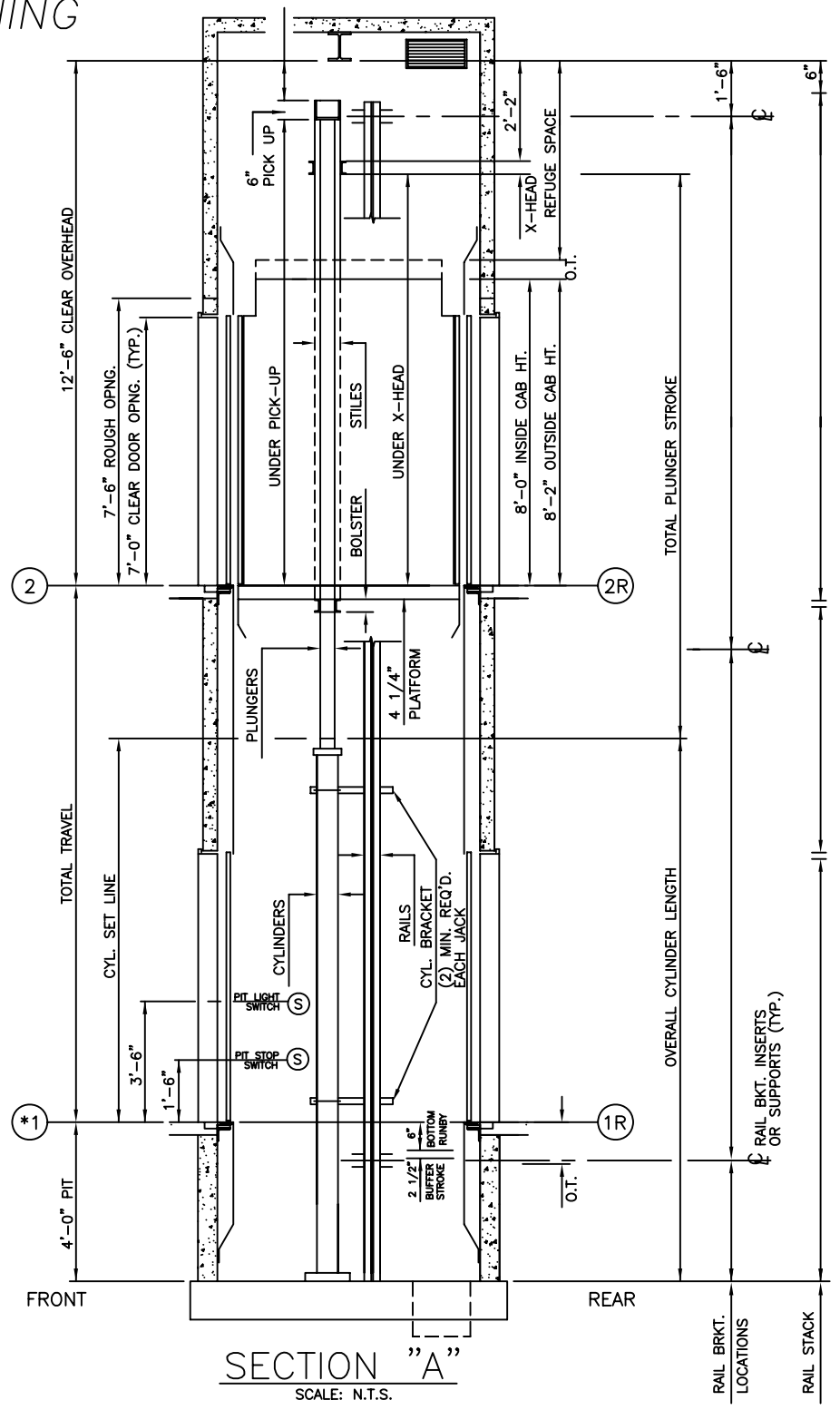
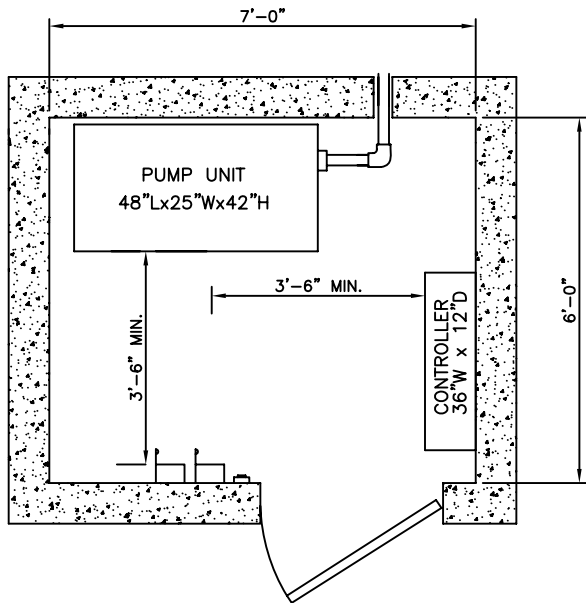


P: 888-695-4387, E: info@elevators.com

4000 LBS. HOLELESS HYDRAULIC
 FRONT & REAR CENTER OPENING

4000 LBS. HOLELESS HYDRAULIC FRONT & REAR OPENING

NOTE:
 WITH STANDARD 4'-0" PIT AND 12'-6"
 OVERHEAD, MAXIMUM TRAVEL AT
 100 F.P.M. IS 13'-0". FOR TRAVELS
 EXCEEDING 13'-0", CONSULT D.E.I.
 ENGINEERING DEPARTMENT.



ELEVATION PLAN



P: 888-695-4387, E: info@elevators.com