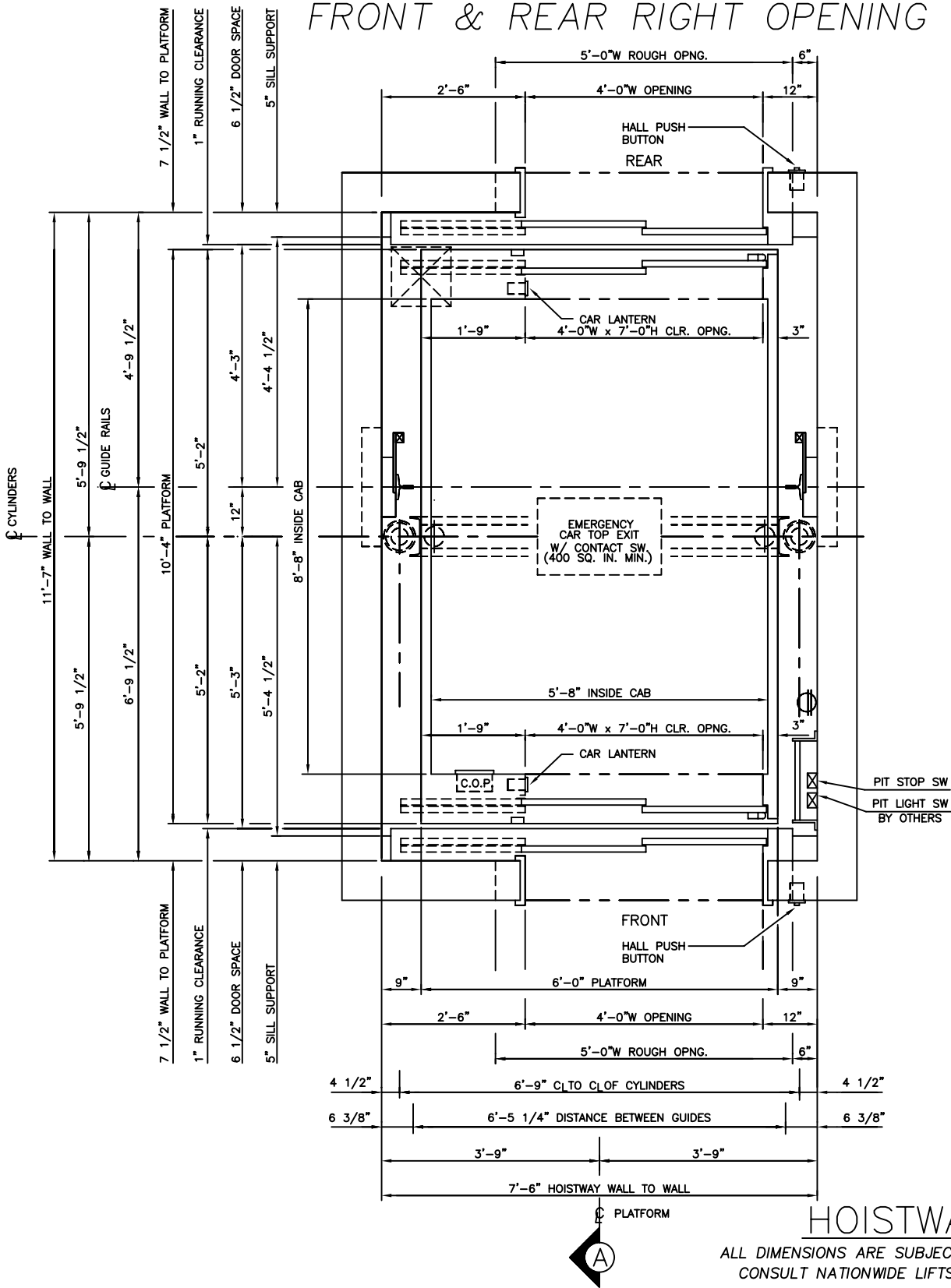


5000 LBS. HOSPITAL HOLELESS HYDRAULIC FRONT & REAR RIGHT OPENING



HOISTWAY PLAN

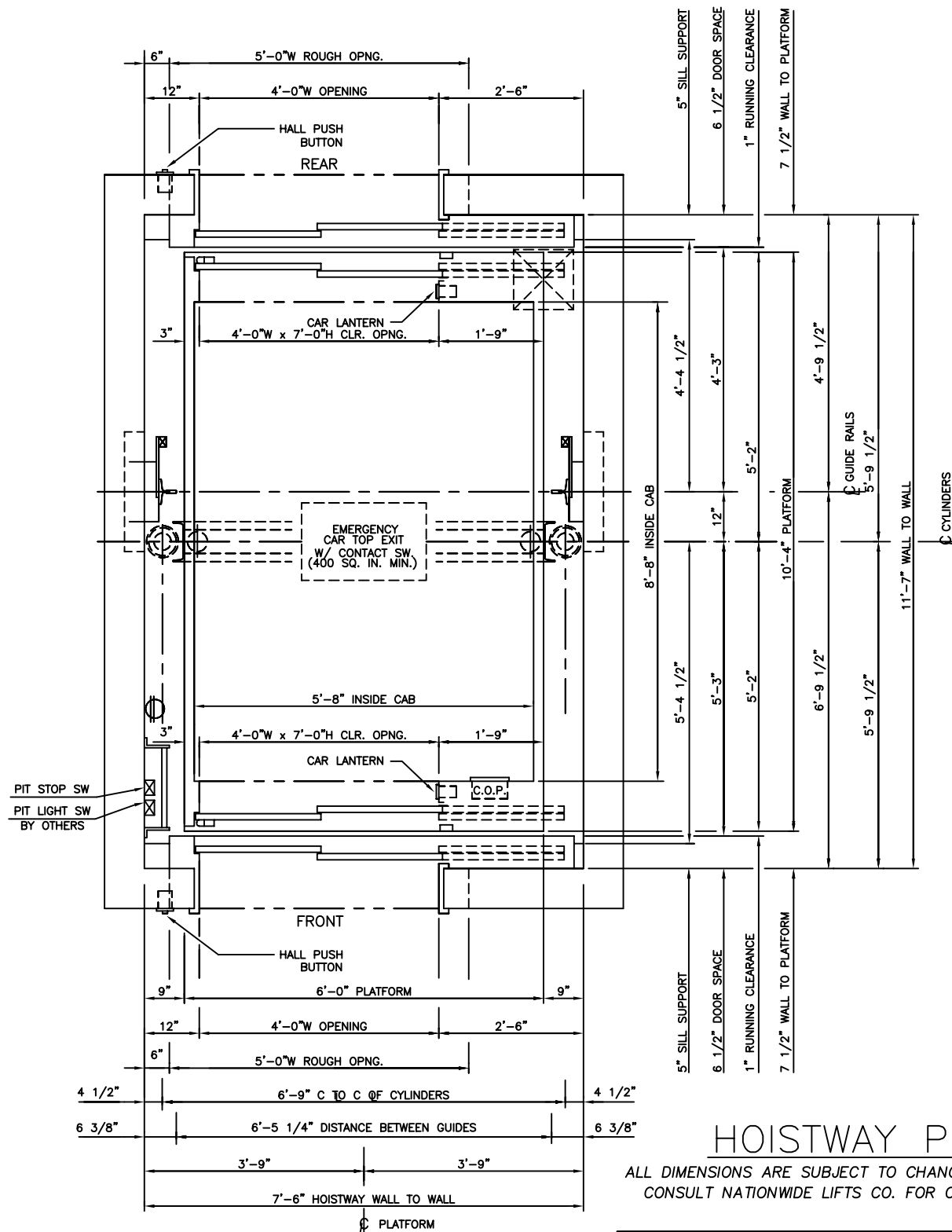
ALL DIMENSIONS ARE SUBJECT TO CHANGE WITHOUT NOTICE.
CONSULT NATIONWIDE LIFTS CO. FOR CONFIRMATION.

MEETS 24" X 84"
STRETCHER REQUIREMENTS



P: 888-695-4387, E: info@elevators.com

5000 LBS. HOSPITAL HOLELESS HYDRAULIC FRONT & REAR LEFT OPENING



HOISTWAY PLAN

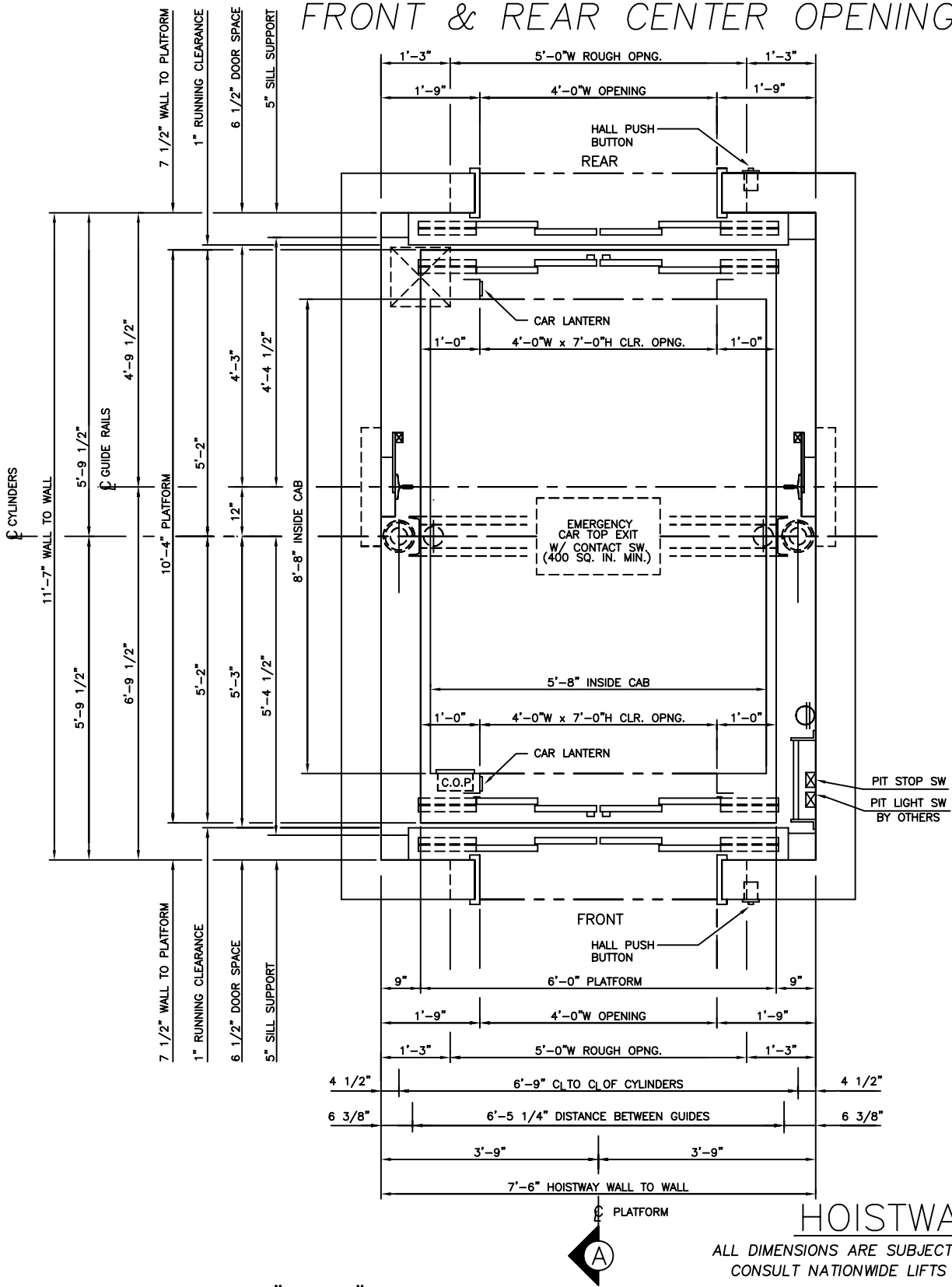
ALL DIMENSIONS ARE SUBJECT TO CHANGE WITHOUT NOTICE.
CONSULT NATIONWIDE LIFTS CO. FOR CONFIRMATION.

MEETS 24" X 84"
STRETCHER REQUIREMENTS



P: 888-695-4387, E: info@elevators.com

5000 LBS. HOSPITAL HOLELESS HYDRAULIC FRONT & REAR CENTER OPENING



MEETS 24" X 84"
STRETCHER REQUIREMENTS

HOISTWAY PLAN

ALL DIMENSIONS ARE SUBJECT TO CHANGE WITHOUT NOTICE.
CONSULT NATIONWIDE LIFTS CO. FOR CONFIRMATION.

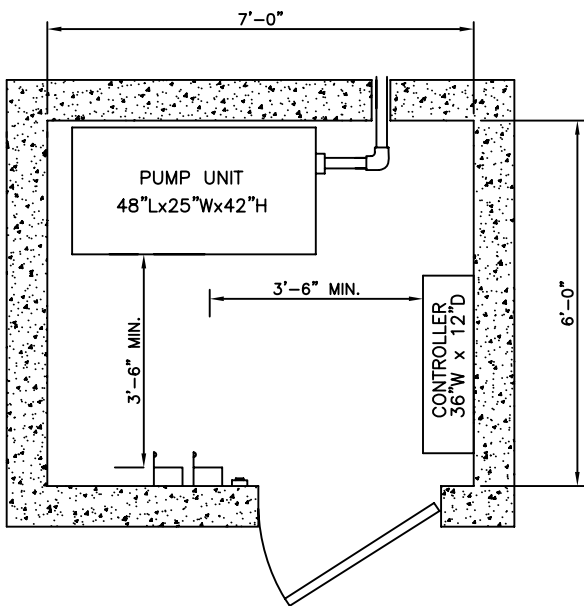
Nationwide Lifts

www.elevators.com

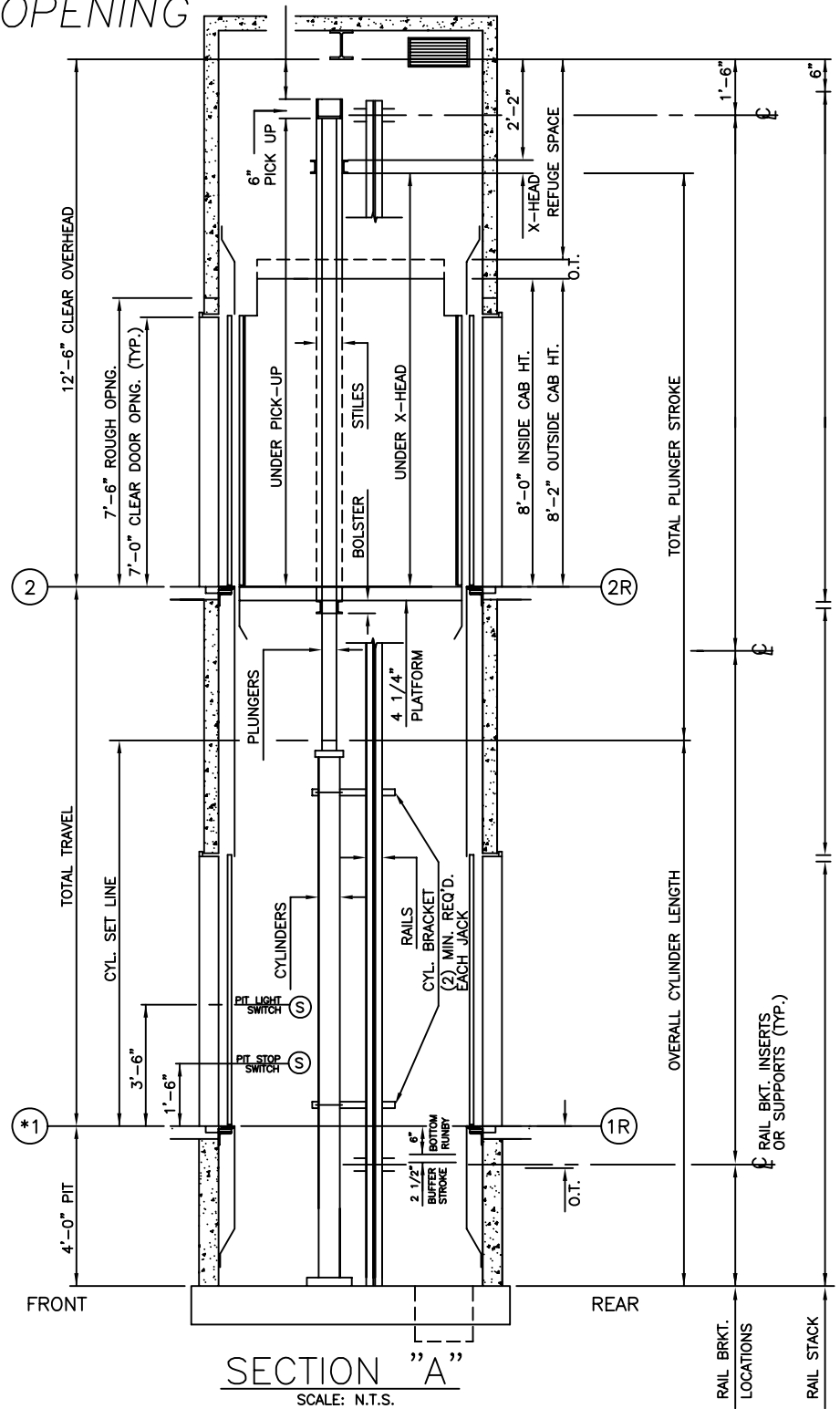
P: 888-695-4387, E: info@elevators.com

5000 LBS. HOSPITAL HOLELESS HYDRAULIC FRONT & REAR LEFT OPENING

NOTE:
WITH STANDARD 4'-0" PIT AND 12'-6"
OVERHEAD, MAXIMUM TRAVEL AT
100 F.P.M. IS 13'-0". FOR TRAVELS
EXCEEDING 13'-0", CONSULT D.E.I.
ENGINEERING DEPARTMENT.



MACHINE ROOM DETAIL



ELEVATION PLAN



P: 888-695-4387, E: info@elevators.com