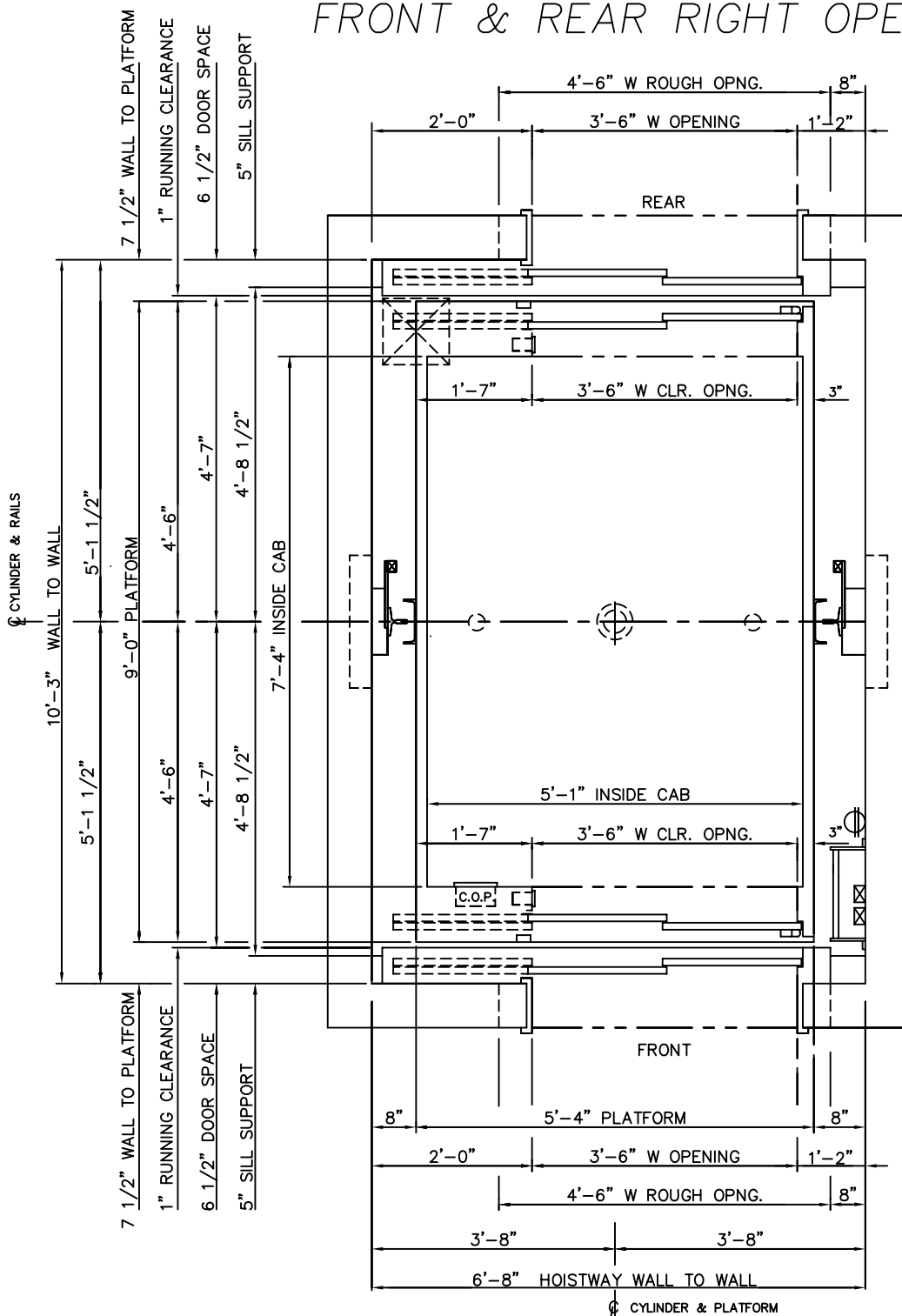


3500 LBS. H INGROUND HYDRAULIC FRONT & REAR RIGHT OPENING



MEETS 24" X 84"
STRETCHER REQUIREMENTS



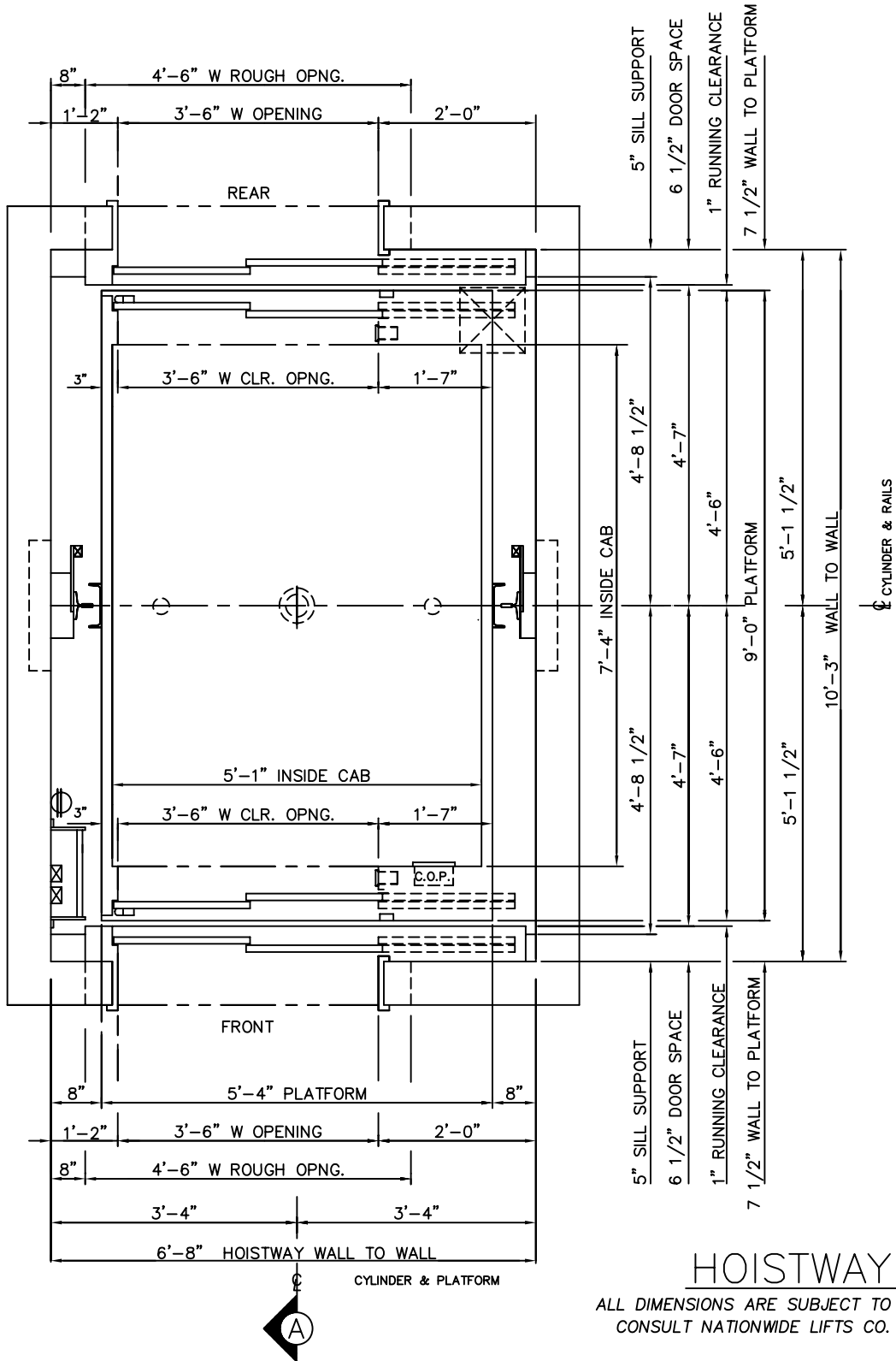
HOISTWAY PLAN

ALL DIMENSIONS ARE SUBJECT TO CHANGE WITHOUT NOTICE.
CONSULT NATIONWIDE LIFTS CO. FOR CONFIRMATION.



P: 888-695-4387, E: info@elevators.com

3500 LBS. H INGROUND HYDRAULIC FRONT & REAR LEFT OPENING



HOISTWAY PLAN

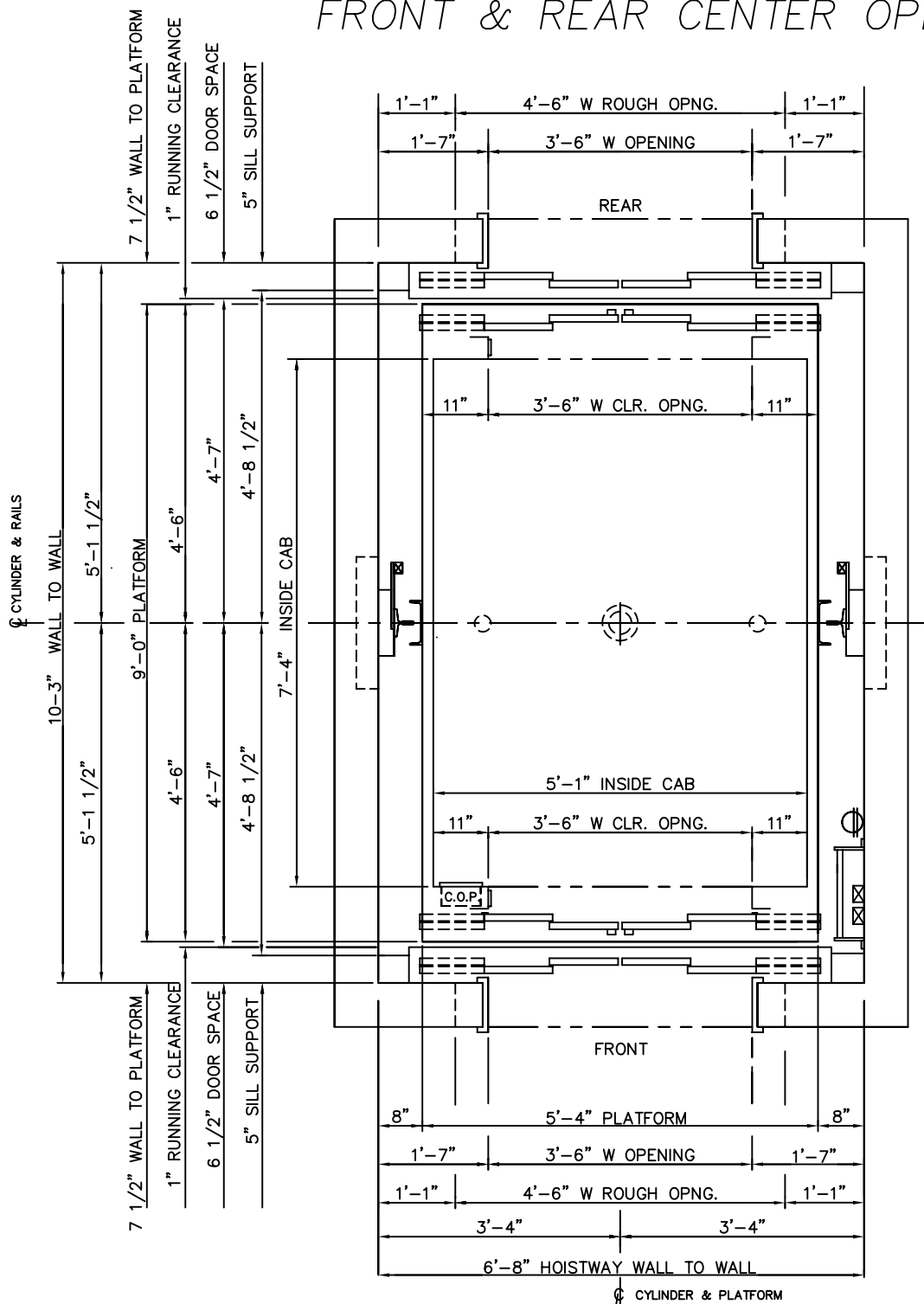
ALL DIMENSIONS ARE SUBJECT TO CHANGE WITHOUT NOTICE.
CONSULT NATIONWIDE LIFTS CO. FOR CONFIRMATION.

MEETS 24" X 84"
STRETCHER REQUIREMENTS


Nationwide Lifts
www.elevators.com

P: 888-695-4387, E: info@elevators.com

3500 LBS. H INGROUND HYDRAULIC FRONT & REAR CENTER OPENING



MEETS 24" X 84"
STRETCHER REQUIREMENTS



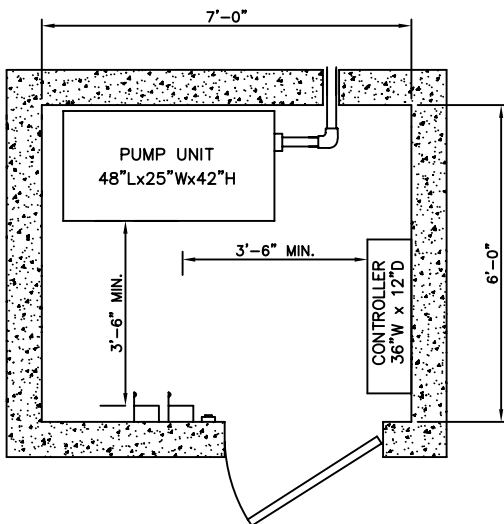
HOISTWAY PLAN

ALL DIMENSIONS ARE SUBJECT TO CHANGE WITHOUT NOTICE.
CONSULT NATIONWIDE LIFTS CO. FOR CONFIRMATION.

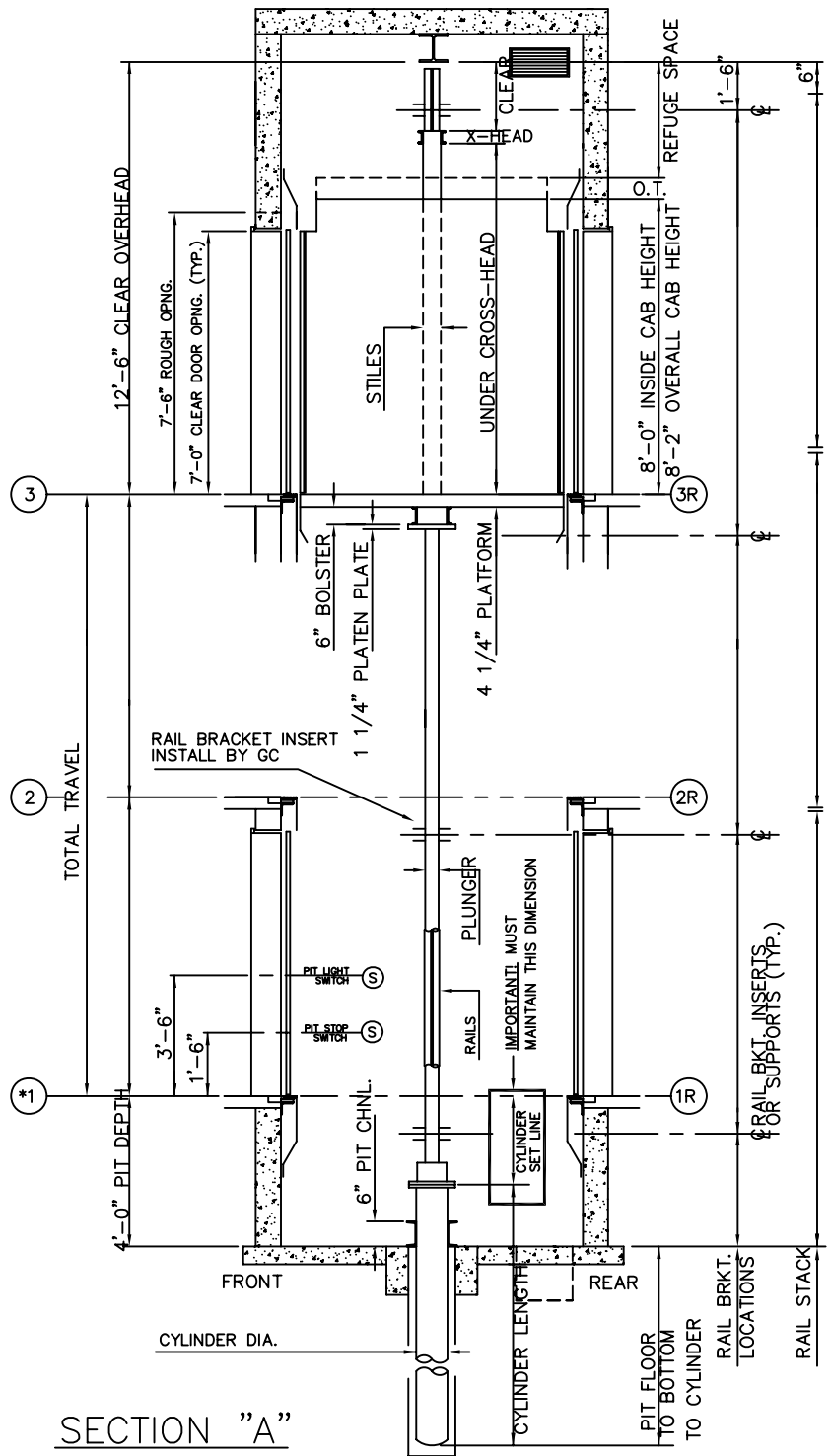


P: 888-695-4387, E: info@elevators.com

3500 LBS. H INGROUND HYDRAULIC FRONT & REAR OPENING



MACHINE ROOM DETAIL



SECTION "A"

ELEVATION PLAN


Nationwide Lifts
www.elevators.com

P: 888-695-4387, E: info@elevators.com