

MEETS 24" X 84"
STRETCHER REQUIREMENTS

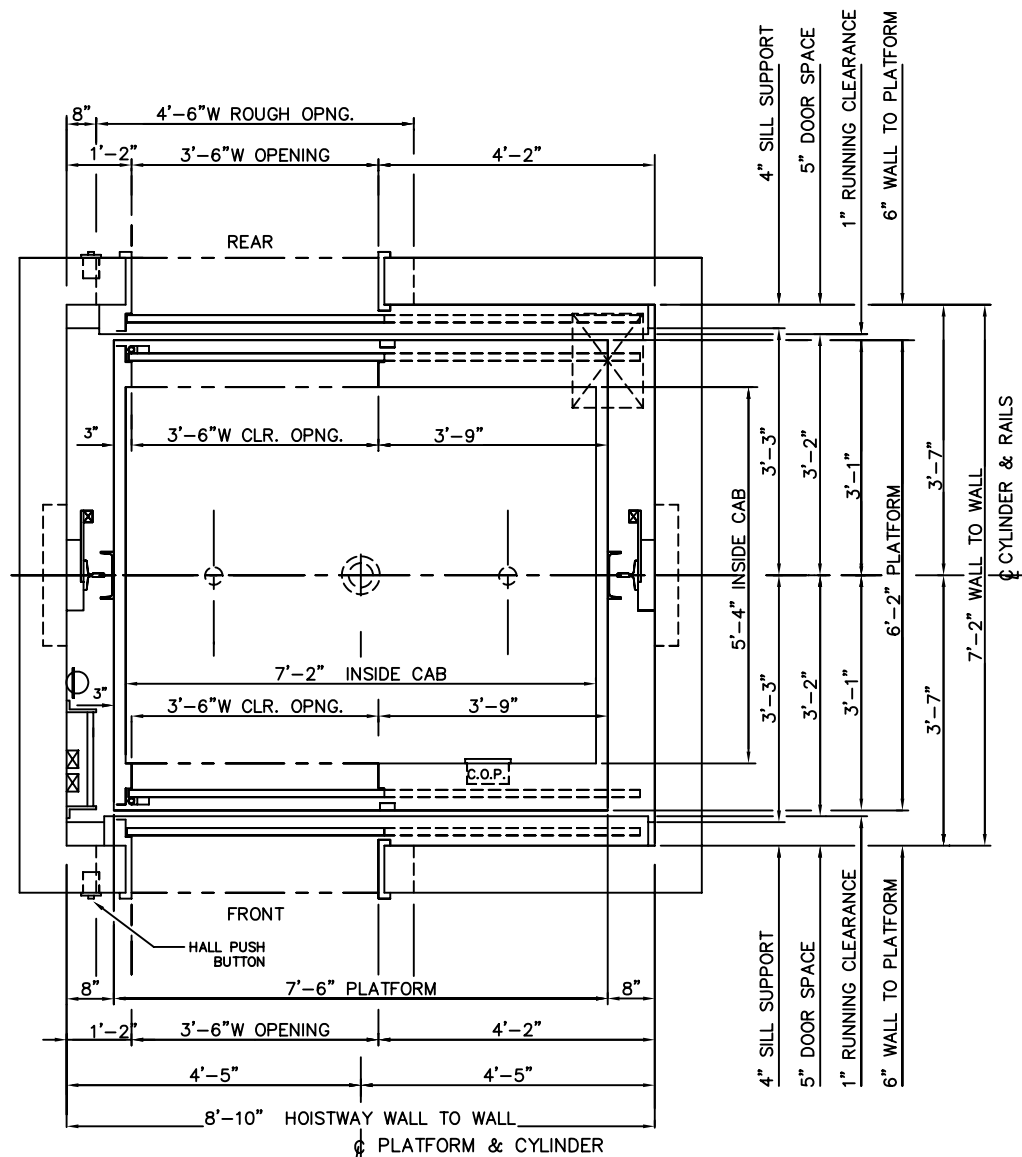
3500 LBS. STRETCHER INGROUND HYDRAULIC
FRONT & REAR RIGHT OPENING

HOISTWAY PLAN

ALL DIMENSIONS ARE SUBJECT TO CHANGE WITHOUT NOTICE.
CONSULT NATIONWIDE LIFTS CO. FOR CONFIRMATION.



P: 888-695-4387, E: info@elevators.com



MEETS 24" X 84"
STRETCHER REQUIREMENTS



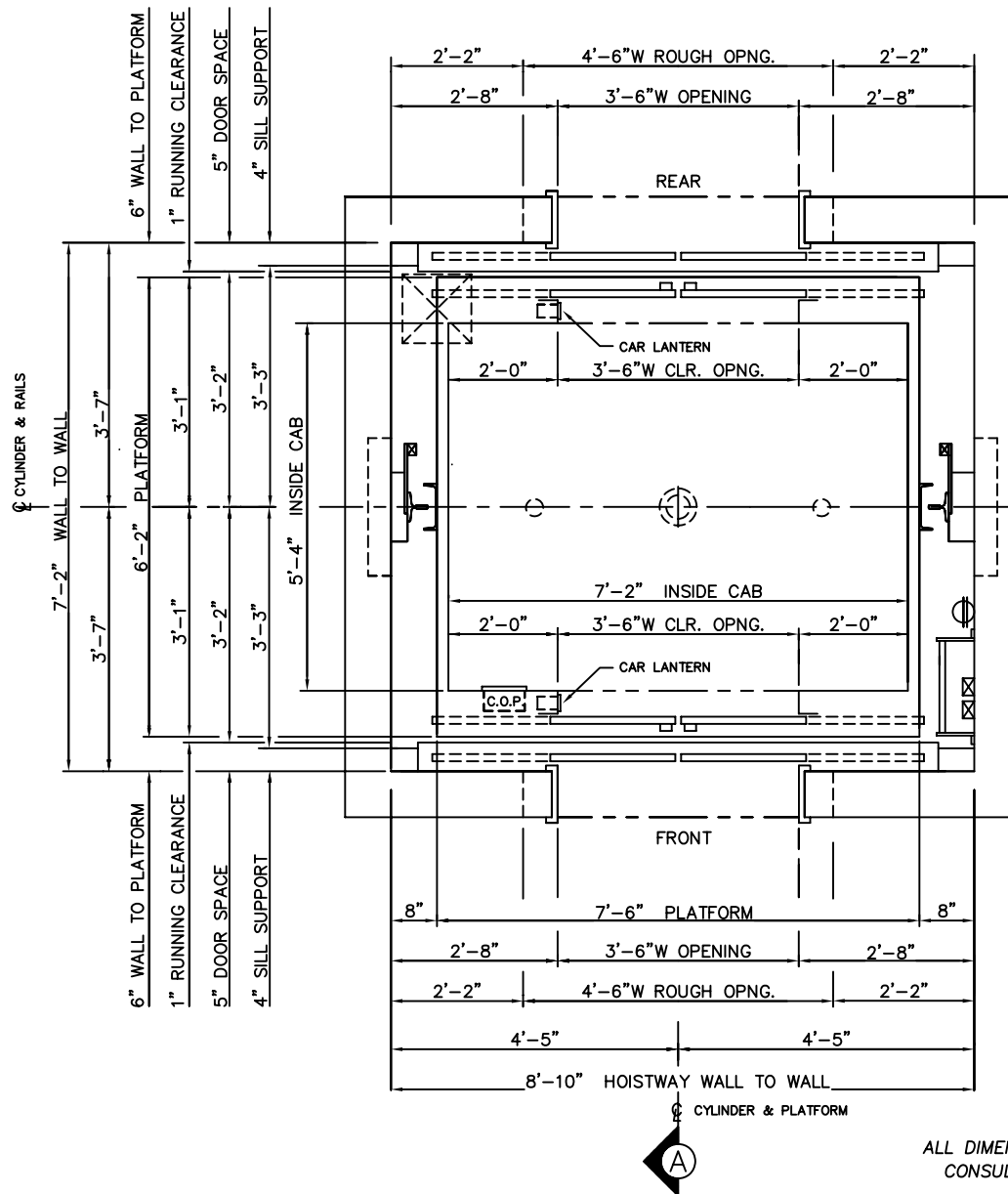
HOISTWAY PLAN

ALL DIMENSIONS ARE SUBJECT TO CHANGE WITHOUT NOTICE.
CONSULT NATIONWIDE LIFTS CO. FOR CONFIRMATION.

*3500 LBS. STRETCHER INGROUND HYDRAULIC
FRONT & REAR LEFT OPENING*



P: 888-695-4387, E: info@elevators.com



HOISTWAY PLAN

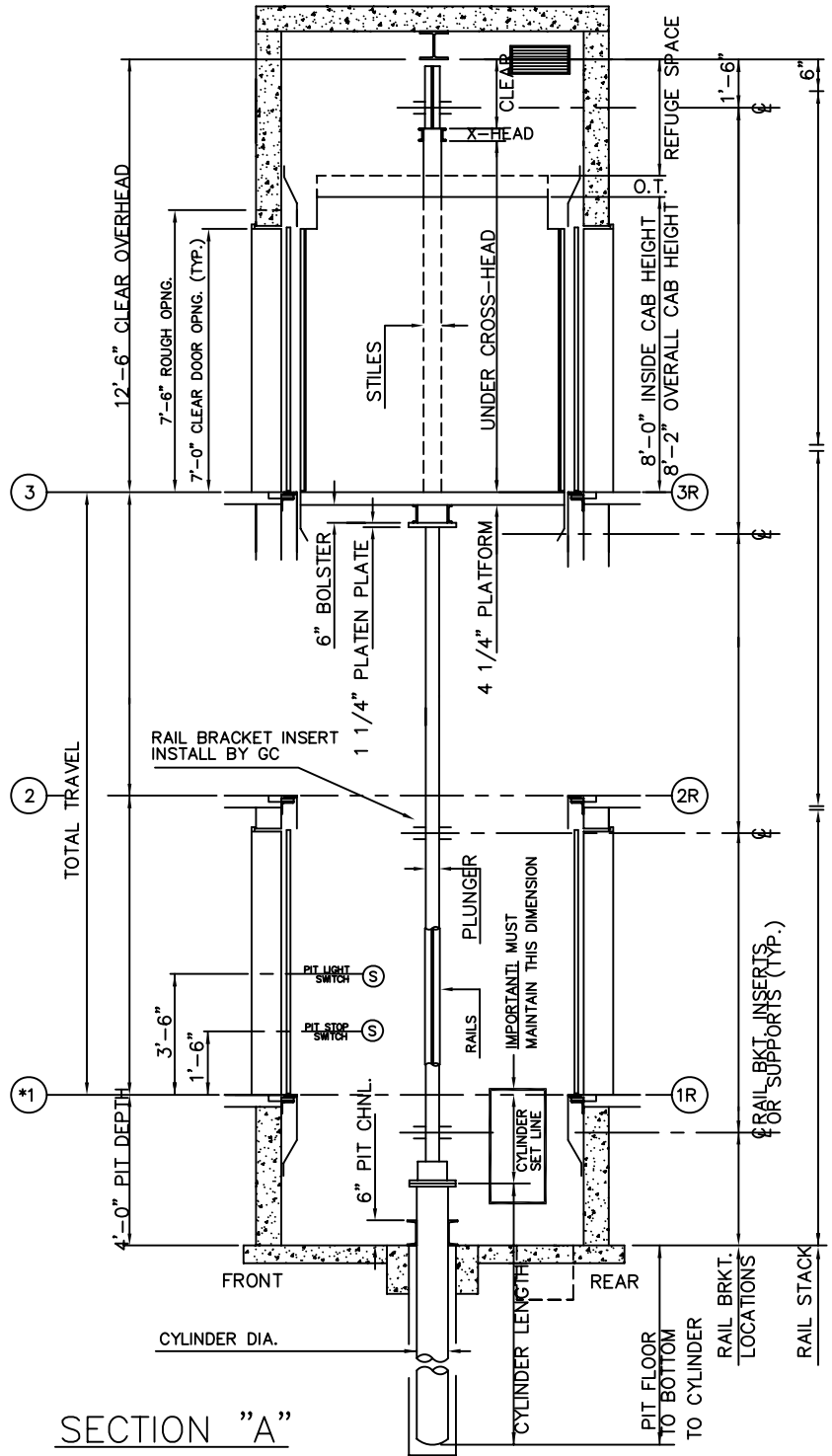
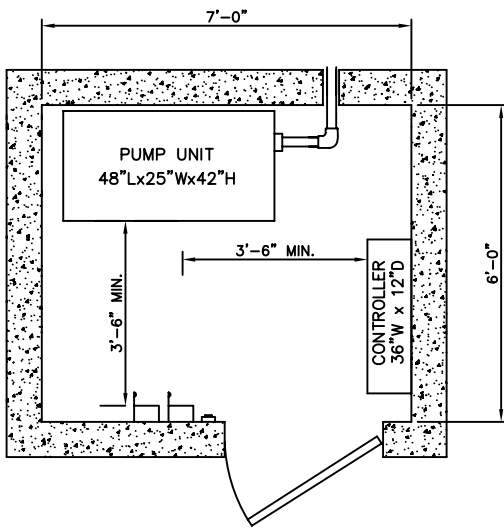
ALL DIMENSIONS ARE SUBJECT TO CHANGE WITHOUT NOTICE.
CONSULT NATIONWIDE LIFTS CO. FOR CONFIRMATION.

3500 LBS. STRETCHER INGROUND HYDRAULIC
FRONT & REAR CENTER OPENING

Nationwide Lifts
www.elevators.com

P: 888-695-4387, E: info@elevators.com

3500 LBS. STRETCHER INGROUND HYDRAULIC FRONT & REAR LEFT OPENING



ELEVATION PLAN

Nationwide Lifts
www.elevators.com