

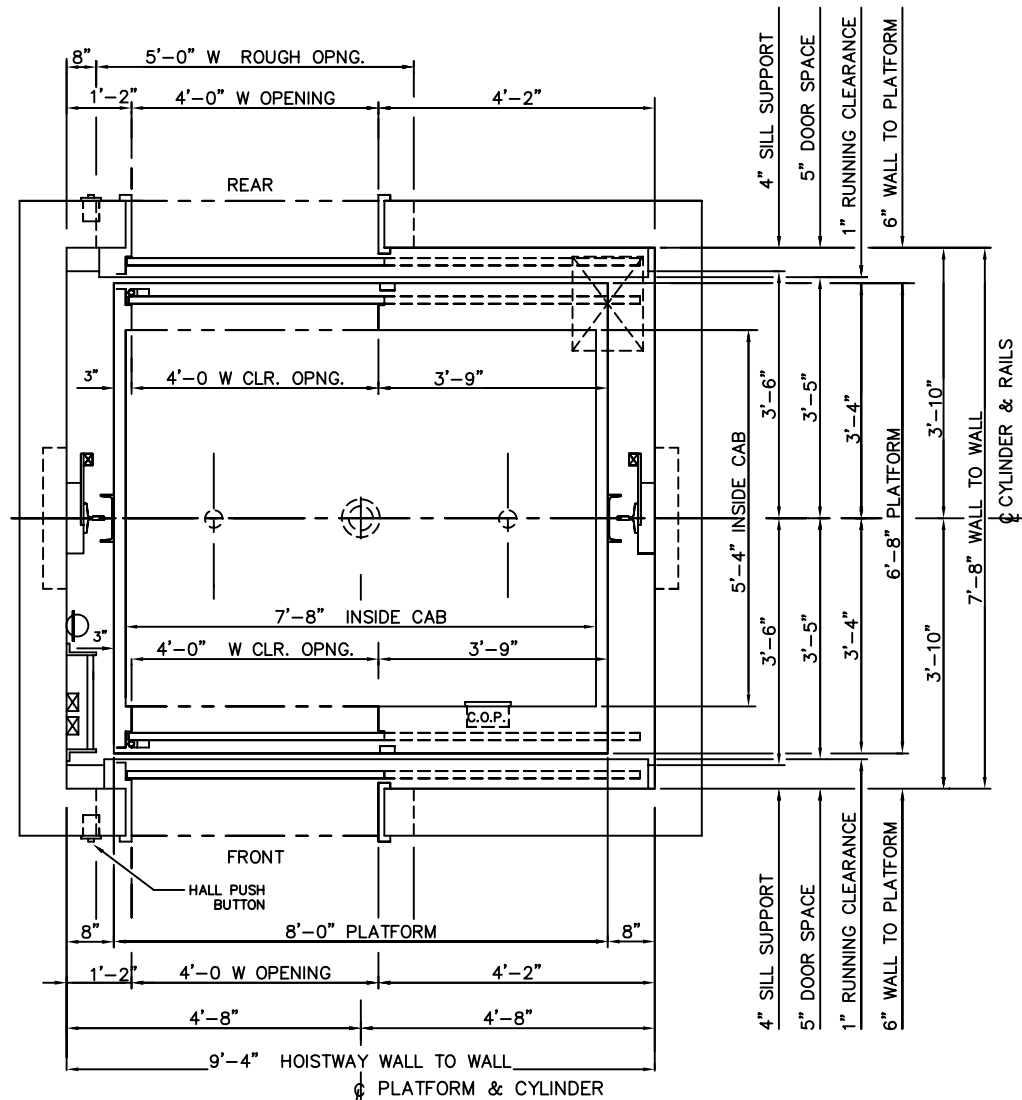
MEETS 24" X 84"  
STRETCHER REQUIREMENTS

*4000 LBS. INGROUND HYDRAULIC  
FRONT & REAR RIGHT OPENING*

**HOISTWAY PLAN**  
ALL DIMENSIONS ARE SUBJECT TO CHANGE WITHOUT NOTICE.  
CONSULT NATIONWIDE LIFTS CO. FOR CONFIRMATION.



P: 888-695-4387, E: info@elevators.com



MEETS 24" X 84"  
STRETCHER REQUIREMENTS



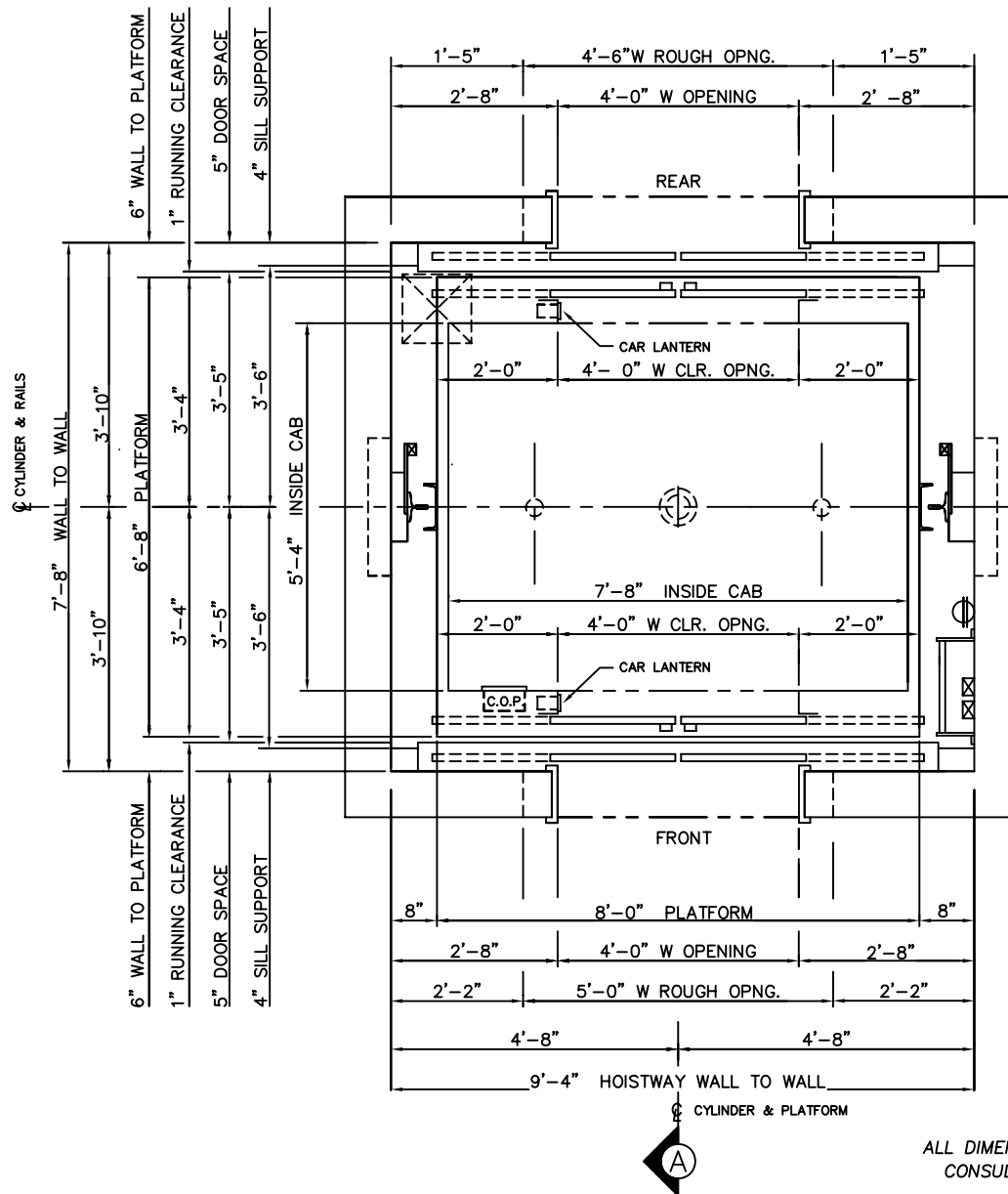
### HOISTWAY PLAN

ALL DIMENSIONS ARE SUBJECT TO CHANGE WITHOUT NOTICE.  
CONSULT NATIONWIDE LIFTS CO. FOR CONFIRMATION.

*4000 LBS. INGROUND HYDRAULIC  
FRONT & REAR LEFT OPENING*



P: 888-695-4387, E: info@elevators.com



### HOISTWAY PLAN

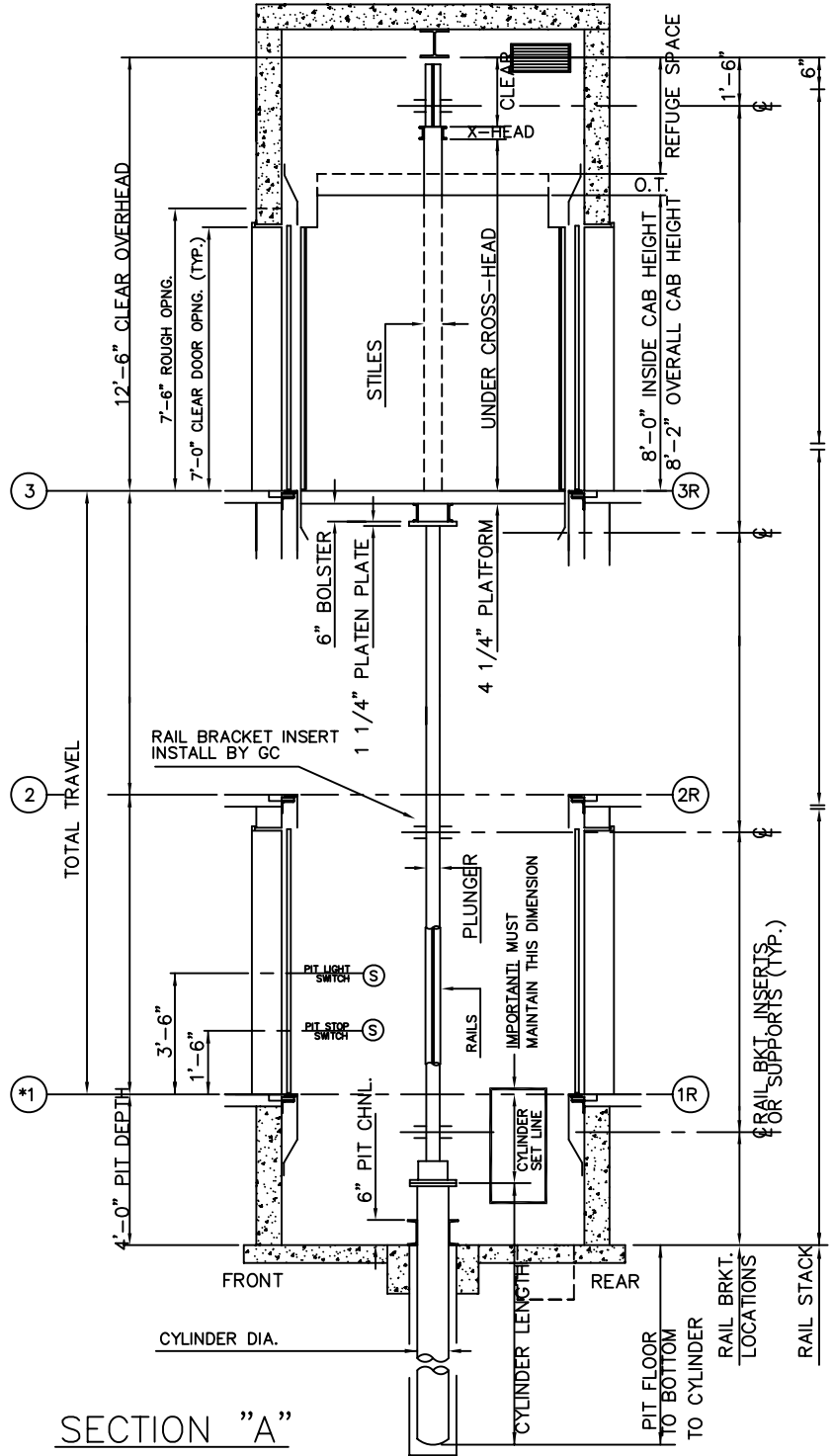
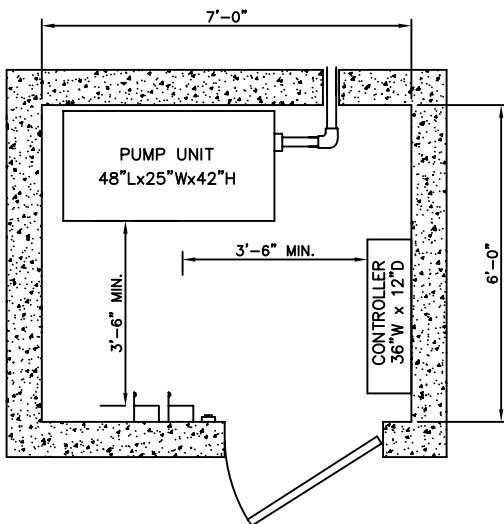
ALL DIMENSIONS ARE SUBJECT TO CHANGE WITHOUT NOTICE.  
CONSULT NATIONWIDE LIFTS CO. FOR CONFIRMATION.

*4000 LBS. INGROUND HYDRAULIC  
FRONT & REAR CENTER OPENING*



P: 888-695-4387, E: info@elevators.com

# 4000 LBS. INGROUND HYDRAULIC FRONT & REAR OPENING



ELEVATION PLAN

**Nationwide Lifts**  
[www.elevators.com](http://www.elevators.com)

P: 888-695-4387, E: info@elevators.com