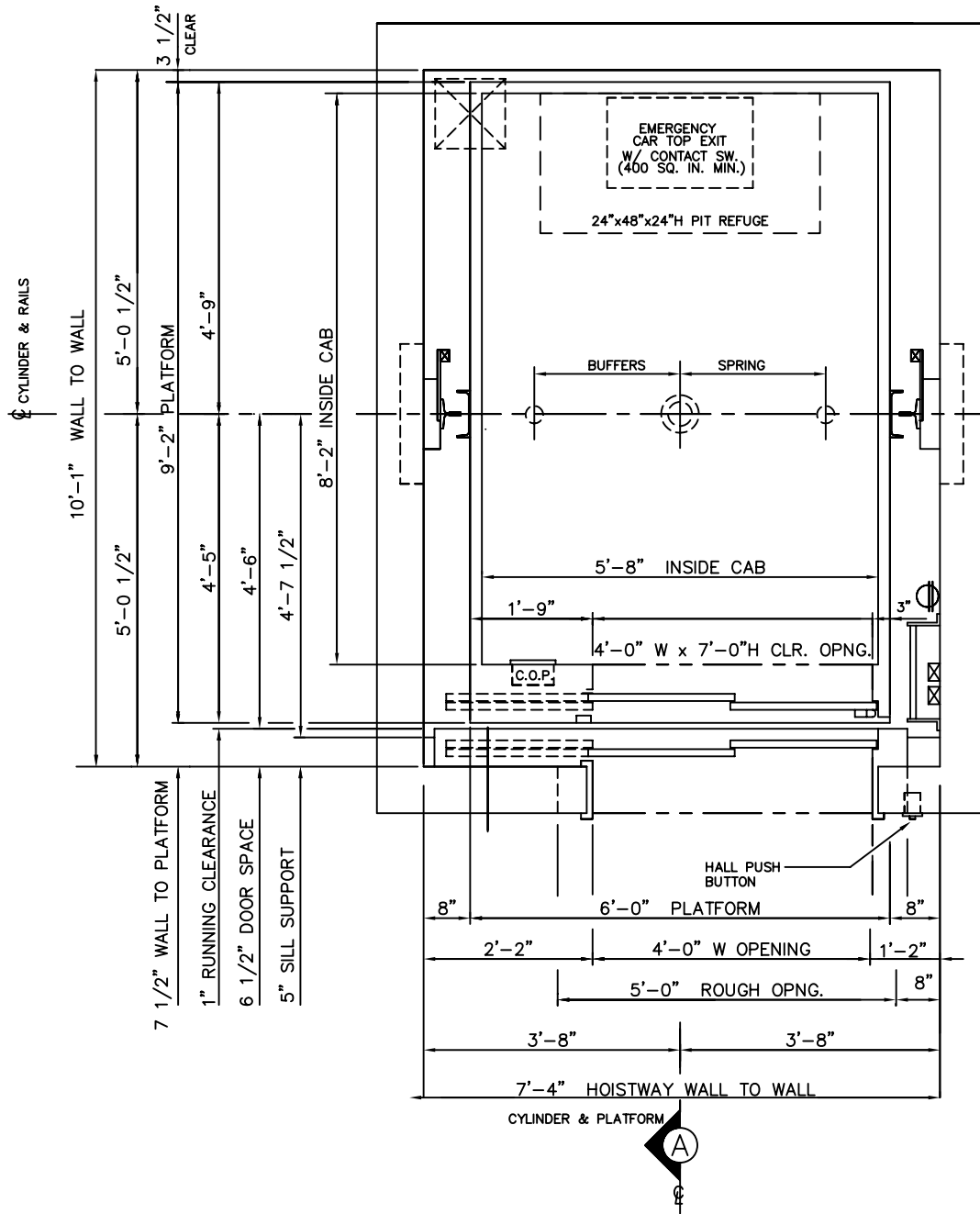


# 4500 LBS. HOSPITAL INGROUND HYDRAULIC FRONT RIGHT OPENING



MEETS 24" X 84"  
STRETCHER REQUIREMENTS

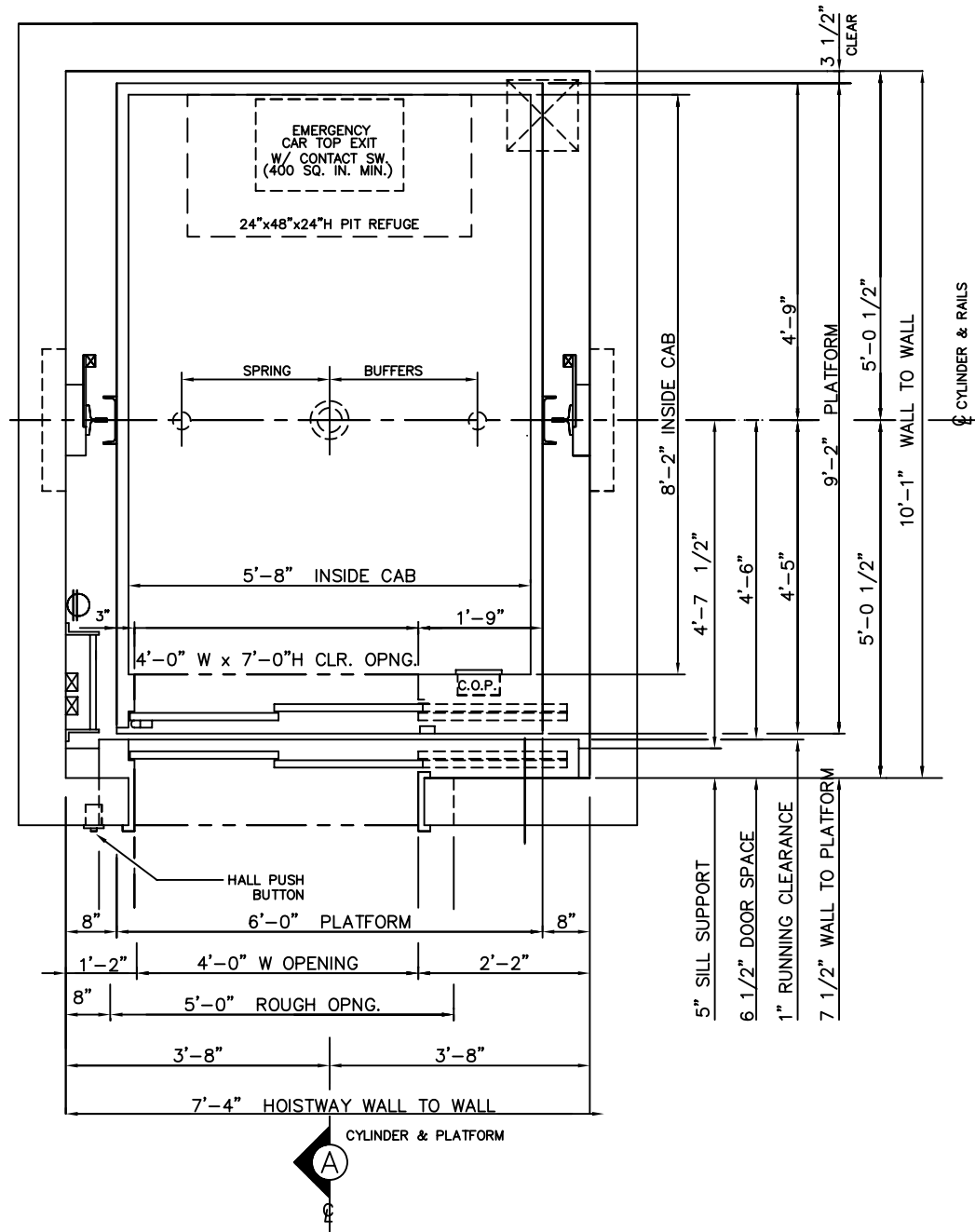
## HOISTWAY PLAN

ALL DIMENSIONS ARE SUBJECT TO CHANGE WITHOUT NOTICE.  
CONSULT NATIONWIDE LIFTS CO. FOR CONFIRMATION.



P: 888-695-4387, E: info@elevators.com

# 4500 LBS. HOSPITAL INGROUND HYDRAULIC FRONT LEFT OPENING



MEETS 24" X 84"  
STRETCHER REQUIREMENTS

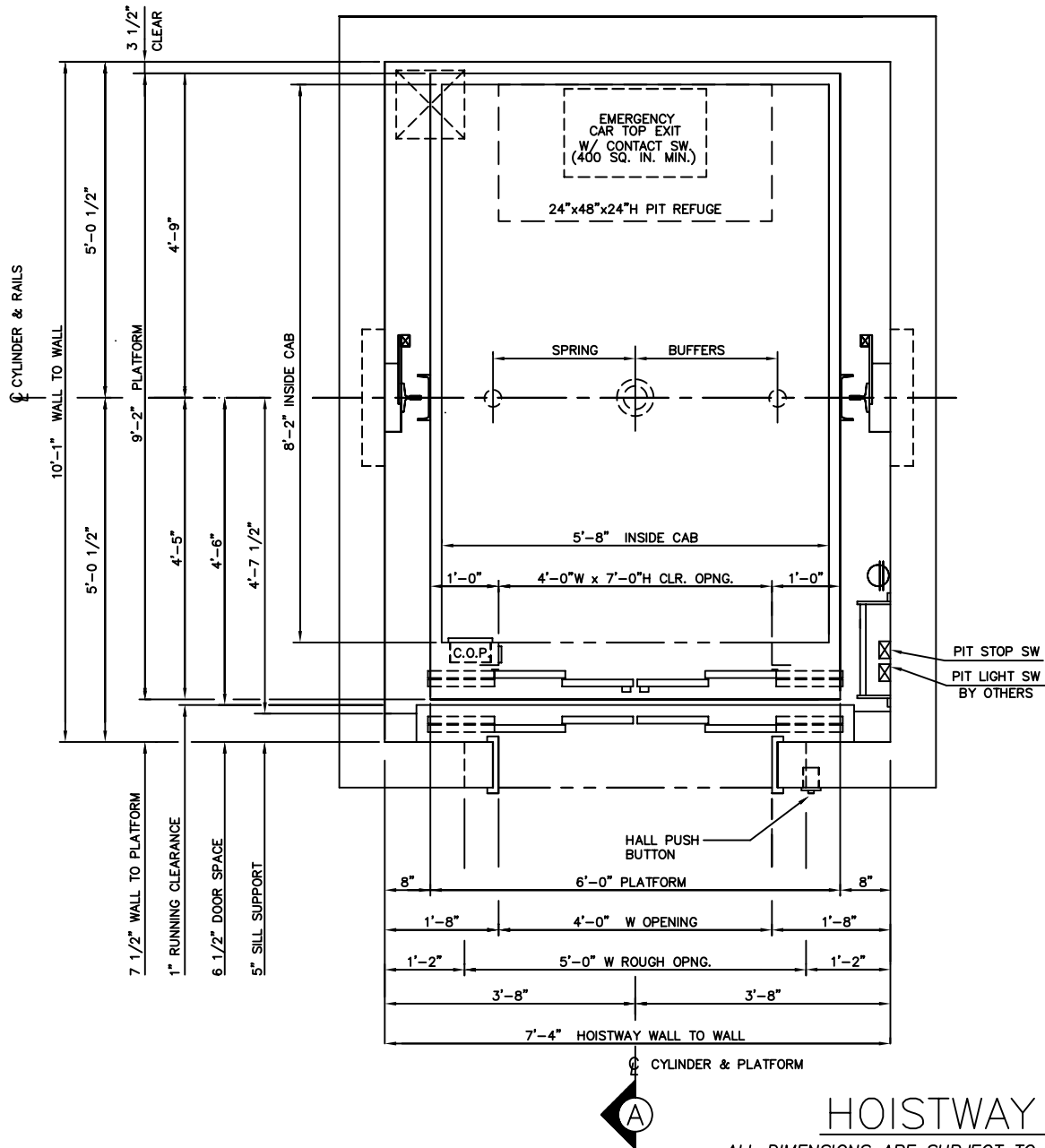
## HOISTWAY PLAN

ALL DIMENSIONS ARE SUBJECT TO CHANGE WITHOUT NOTICE.  
CONSULT NATIONWIDE LIFTS CO. FOR CONFIRMATION.



P: 888-695-4387, E: info@elevators.com

# 4500 LBS. HOSPITAL INGROUND HYDRAULIC FRONT CENTER OPENING



## HOISTWAY PLAN

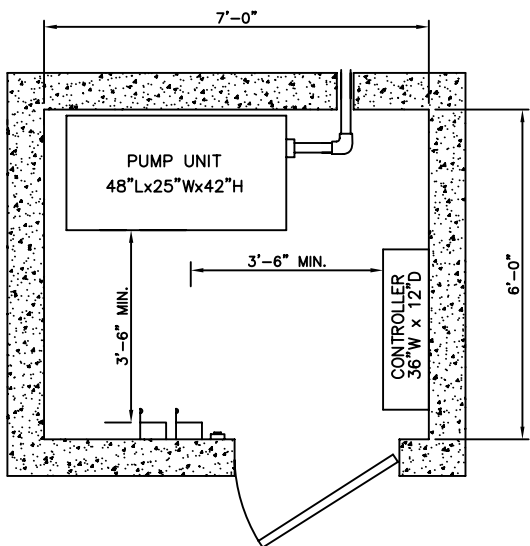
ALL DIMENSIONS ARE SUBJECT TO CHANGE WITHOUT NOTICE.  
CONSULT NATIONWIDE LIFTS CO. FOR CONFIRMATION.

MEETS 24" X 84"  
STRETCHER REQUIREMENTS

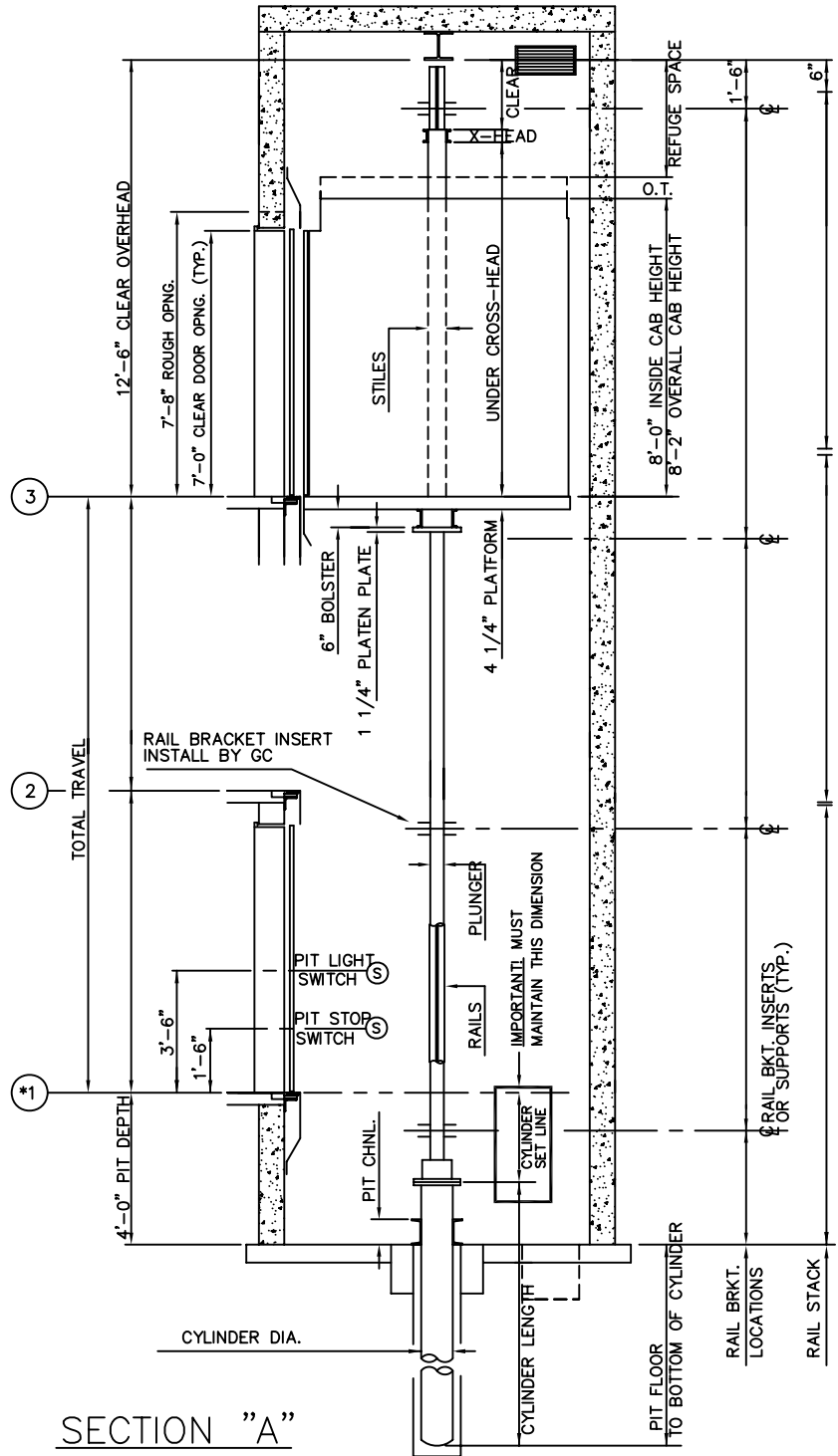


P: 888-695-4387, E: info@elevators.com

# 4500 LBS. HOSPITAL INGROUND HYDRAULIC FRONT OPENING



MACHINE ROOM DETAIL



ELEVATION PLAN



P: 888-695-4387, E: info@elevators.com