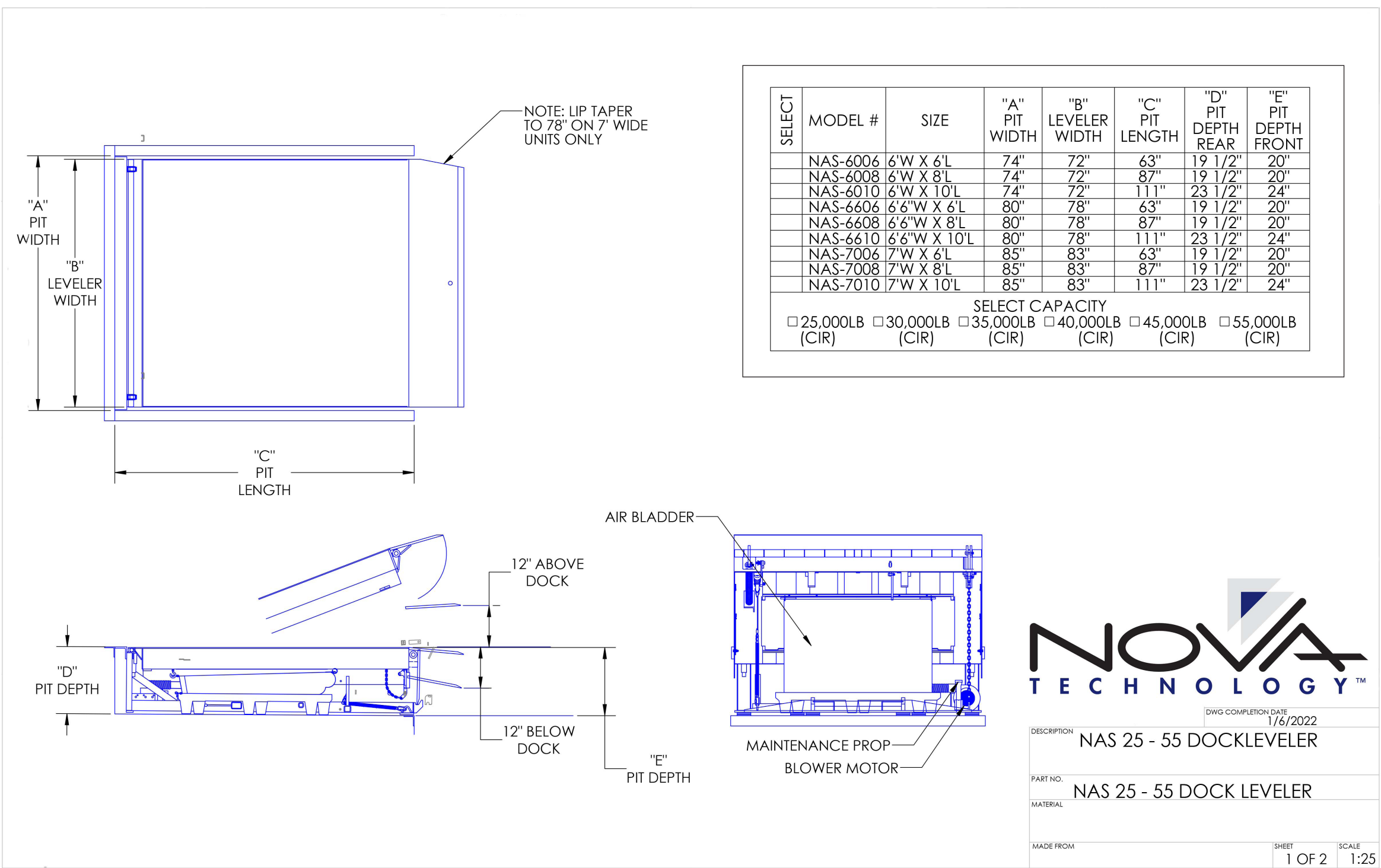
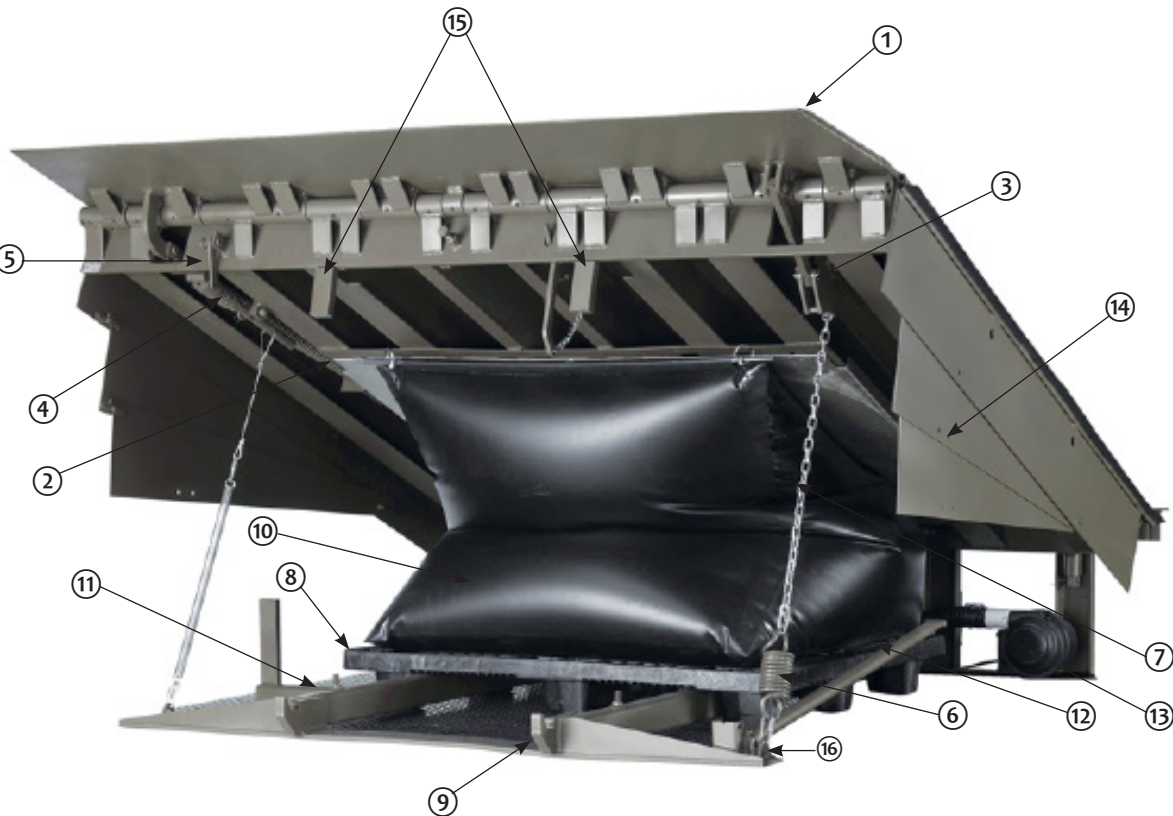


# NOVA NAS AIR POWERED DOCK LEVELER

ARCHITECTURAL DRAWING



# NOVA NAS AIR POWERED DOCK LEVELER



- |                                |                                 |                                    |
|--------------------------------|---------------------------------|------------------------------------|
| 1 — LIP                        | 6 — LIP ACTUATOR SNUBBER SPRING | 11 — MAIN FRAME                    |
| 2 — LIP ASSIST ROD             | 7 — LIP ACTUATOR CHAIN          | 12 — MAINTENANCE PROP              |
| 3 — LIP LINKAGE ASSEMBLY       | 8 — AIR BAG SUPPORT PALLET      | 13 — BLOWER MOTOR                  |
| 4 — LIP LATCH ASSEMBLY         | 9 — LIP KEEPERS (2 USED)        | 14 — FULL RANGE TOE GUARD (2 USED) |
| 5 — LIP MAINTENANCE PROP PIVOT | 10 — AIR BAG                    | 15 — SAFETY LEGS                   |
|                                |                                 | 16 — PROP PIN AND CLIP             |

## STANDARD FEATURES

- ☒ Single-phase 115V motor w/single button control
- ☒ Multi-position structural steel safety legs
- ☒ Below dock end loading control
- ☒ Full-range telescoping toe guards
- ☒ 16-inch yieldable lip
- ☒ Grease fittings
- ☒ Easy clean frame design
- ☒ Night locks, cross-traffic support
- ☒ NEMA 4 (push button box)
- ☒ Steel channel deck support members 25,000, 30,000, 35,000 and 40,000 pound units)
- ☒ Structural steel support members (45,000 and 55,000 pound units)
- ☒ Three-wheel fork truck protection (45,000 and 55,000 pound units)
- ☒ Two 4-inch 1014 laminated bumpers

## OPTIONAL FEATURES

- ☐ Rubber weather seal
- ☐ Brush weather seal
- ☐ Optional bumper sizes and types available
- ☐ Three-wheel support (25,000 pound to 40,000 pound units)
- ☐ 5-inch barrier lip; 8 feet or longer only 35,000+ pound units
- ☐ 18-inch lip
- ☐ 20-inch lip
- ☐ 24-inch riser kit (24-inch pit depth is standard on all 10 foot long levelers)
- ☐ Wash down
- ☐ 2-inch foam insulation
- ☐ Spray metalized
- ☐ Control box stanchion
- ☐ Cut down leveler length and width
- ☐ Stainless steel pins and lip rods
- ☐ Steel pan: 4-sided
- ☐ Quick pit: 3-sided
- ☐ Three-wheel support
- ☐ IntelliDock Combination Control Box

