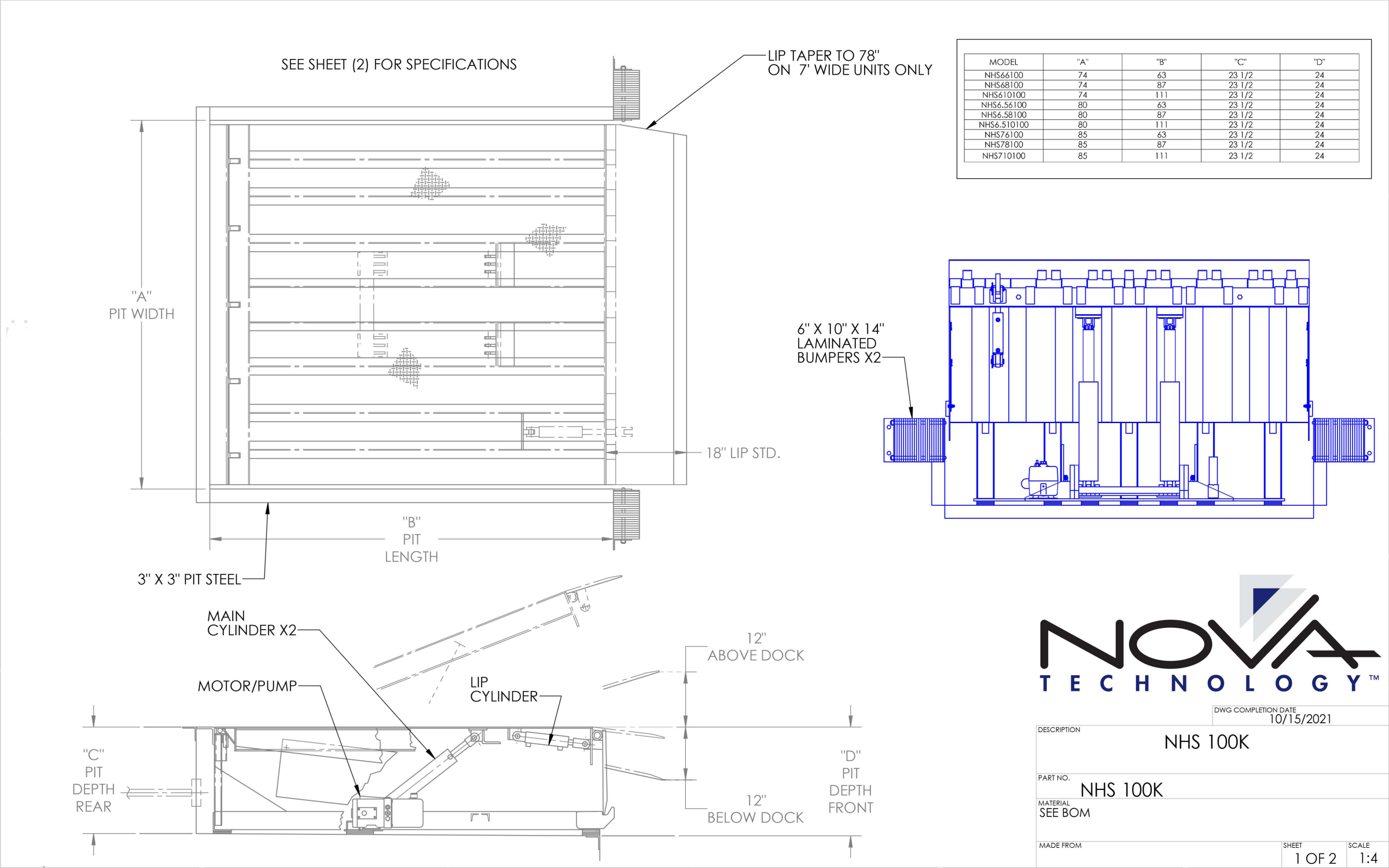


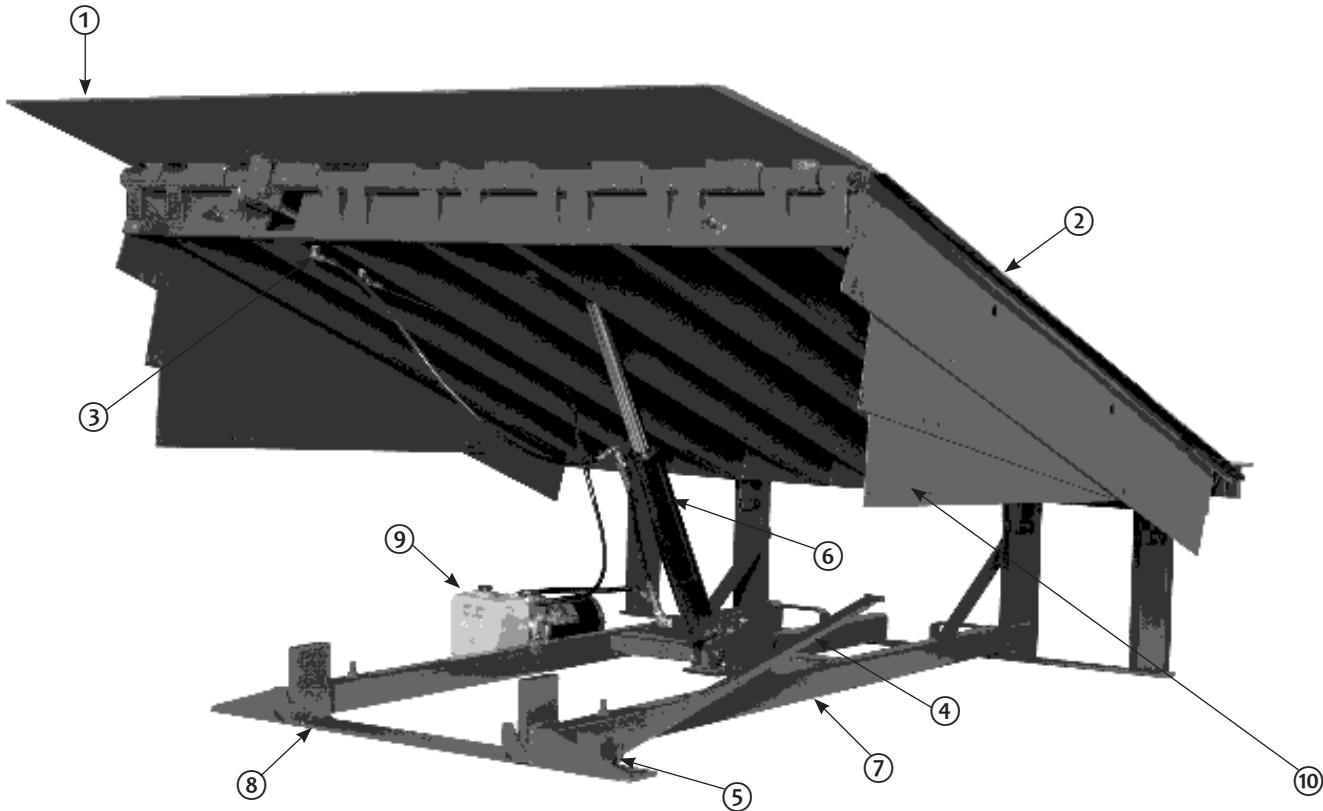
NOVA NHS HYDRAULIC DOCK LEVELER

ARCHITECTURAL DRAWING



NOVA NHS HYDRAULIC DOCK LEVELER

(45K-100K)



- 1 — LIP
2 — PLATFORM
3 — LIP CYLINDER
4 — MAINTENANCE PROP
- 5 — PROP PIN AND CLIP
6 — PLATFORM CYLINDER
7 — MAIN FRAME
- 8 — LIP KEEPERS (2 USED)
9 — POWERPACK (MOTOR/PUMP/RESERVOIR)
10 — FULL RANGE TOE GUARD (2 USED)

STANDARD FEATURES

- ☒ 1 1/4 HP frame-mounted single- or three-phase motor
- ☒ Full-range yellow telescoping toe guards
- ☒ B410-14 laminated dock bumpers
- ☒ B610-14 laminated dock bumpers (standard on 75,000 and 100,000 pound units)
- ☒ Night locks, cross-traffic support
- ☒ Integral tamper-proof velocity safety stop
- ☒ 16-inch yieldable lip (45,000 and 55,000 pound units)
- ☒ 18-inch yieldable lip (75,000 and 100,000 pound units)
- ☒ Easy clean frame design
- ☒ Below dock end load capability
- ☒ Positive lip extension and retraction with true regenerative hydraulic control
- ☒ NEMA 12 panel
- ☒ Structural steel support members

OPTIONAL FEATURES

- ☐ Rubber weather seal
- ☐ Brush weather seal
- ☐ Optional bumper sizes and types available
- ☐ Three-wheel support
- ☐ 5-inch barrier lip
- ☐ 18-inch lip (standard on 75,000 and 100,000 pound units)
- ☐ 20-inch lip
- ☐ 24-inch riser kit (24-inch pit depth is standard on all 10 foot long levelers and 75,000 and 100,000 pound units)
- ☐ Wash down
- ☐ 2-inch foam insulation
- ☐ Auto-return to dock
- ☐ E-stop/independent lip
- ☐ NEMA 4 (push-button box)
- ☐ Spray metalized
- ☐ Control box stanchion
- ☐ Cut down leveler length and width
- ☐ Stainless steel pins and lip rods
- ☐ Steel pan: 4-sided
- ☐ IntelliDock Combination Control Box

