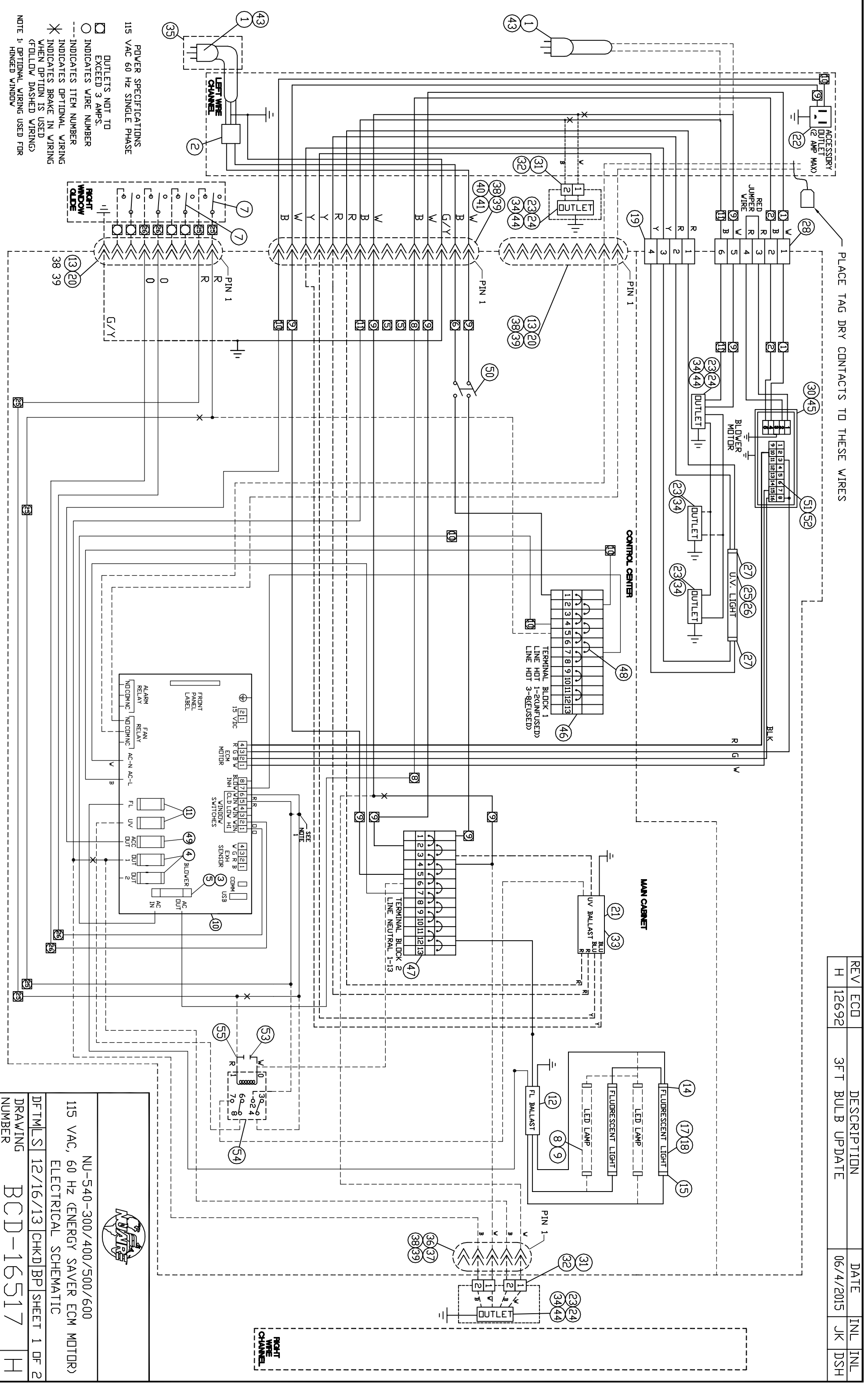


REV	ECD	DESCRIPTION	DATE	INL	INL
H	12692	3FT BULB UPDATE	06/4/2015	JK	DSH



POWER SPECIFICATIONS
115 VAC 60 HZ SINGLE PHASE

- OUTLETS NOT TO EXCEED 3 AMPS.
- INDICATES WIRE NUMBER
- INDICATES ITEM NUMBER
- INDICATES OPTIONAL WIRING
- INDICATES BRAKE IN WIRING
- INDICATES OPTIONAL WIRING WHEN OPTION IS USED
- (FOLLOW DASHED WIRING)
- NOTE 1: OPTIONAL WIRING USED FOR HANGED WINDOW

WIRE

NU-540--300/400/500/600
115 VAC, 60 HZ (ENERGY SAVER ECM MOTOR)
ELECTRICAL SCHEMATIC

DFTML	S	12/16/13	CHKD	BP	SHEET	1	OF	2
DRAWING NUMBER	BCD-16517							H