

VIEW A-A  
(WORK SURFACE)

POLYPROPYLENE  
1/4 THK WORK SURFACE  
PERFORATED AT FRONT  
AND BACK 50% OPEN.

SIDE ACCESS FOR  
COUNTER BALANCE  
SERVICE

PLASTIC  
MOTORIZED  
IMPELLER

WOOD FRAMED  
SEPARATORLESS  
HEPA FILTER WITH  
FILTER PLENUM  
24" x 84" x 5-7/8"

LARGE ACCESS  
PANEL (2)  
(FLUSH MOUNTED)

SMALL ACCESS  
PANEL FLUSH  
MOUNTED (2)  
(INTERIOR)

SMALL ACCESS  
PANEL FLUSH  
MOUNTED (2)  
(INTERIOR)

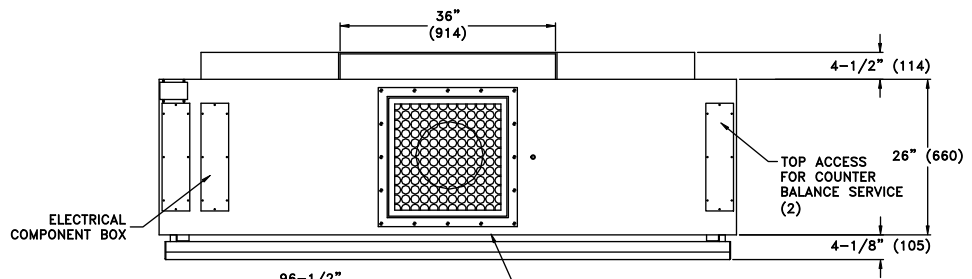
28-1/4"  
(718)

4"  
(102)

1-1/4"  
(32)  
MAX

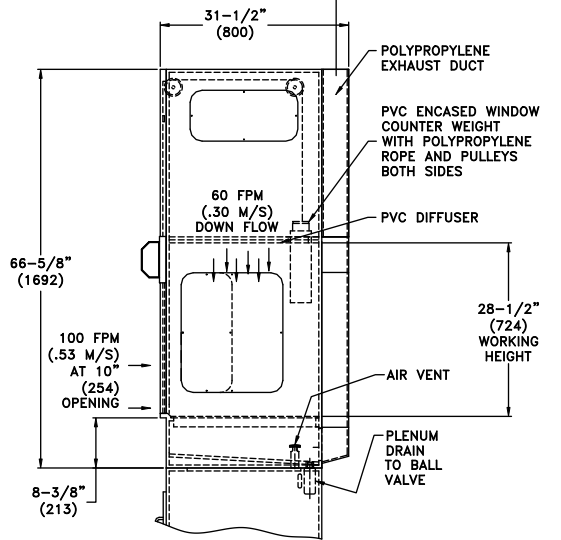
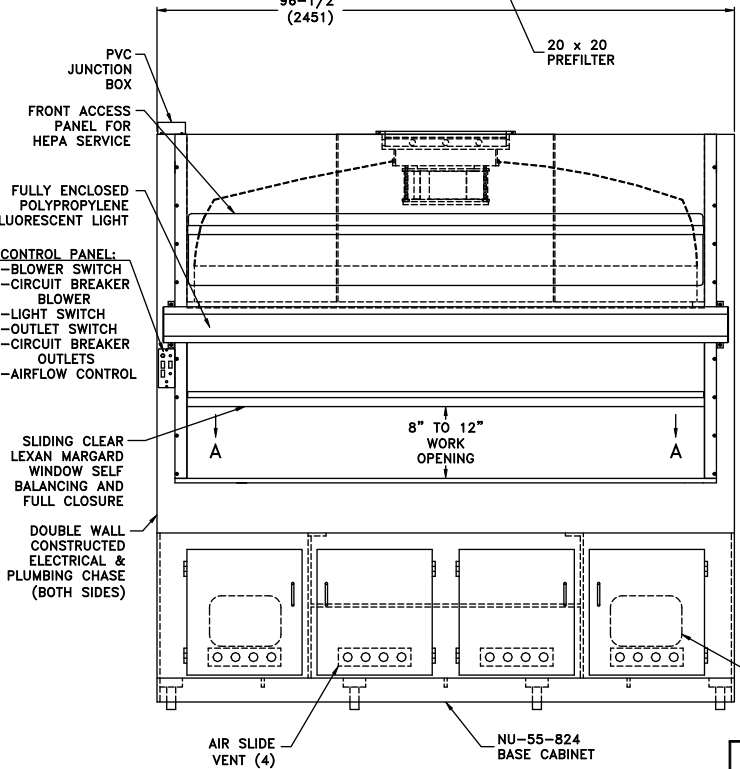
3"  
(76)

26"  
(660)



**POWER SPECIFICATIONS:**  
115V/60Hz SINGLE PHASE  
OUTLETS NOT TO EXCEED  
15 AMP TOTAL CIRCUIT

EXHAUST:  
1705 CFM  
(2897 CMH)  
STATIC:  
1.5" (38mm) W.G.



REAR ACCESS  
PANEL (2)

UNLESS OTHERWISE SPECIFIED DIMENSIONS ARE IN INCHES -TOLERANCES- DECIMALS ±.063 ANGLES ±2°			
		NU-156-824 - BENCH TOP VERTICAL AIRFLOW FUME HOOD (HIGH ACID/CLEAN ROOM)	
DFTM		CHKD	BR
DRAWING NUMBER		BCD-00000	
		SHEET 1 OF 1	