

CONTRACTOR TO VERIFY:

(A) _____ OVERALL LADDER HEIGHT

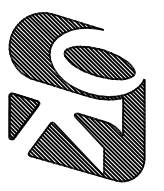
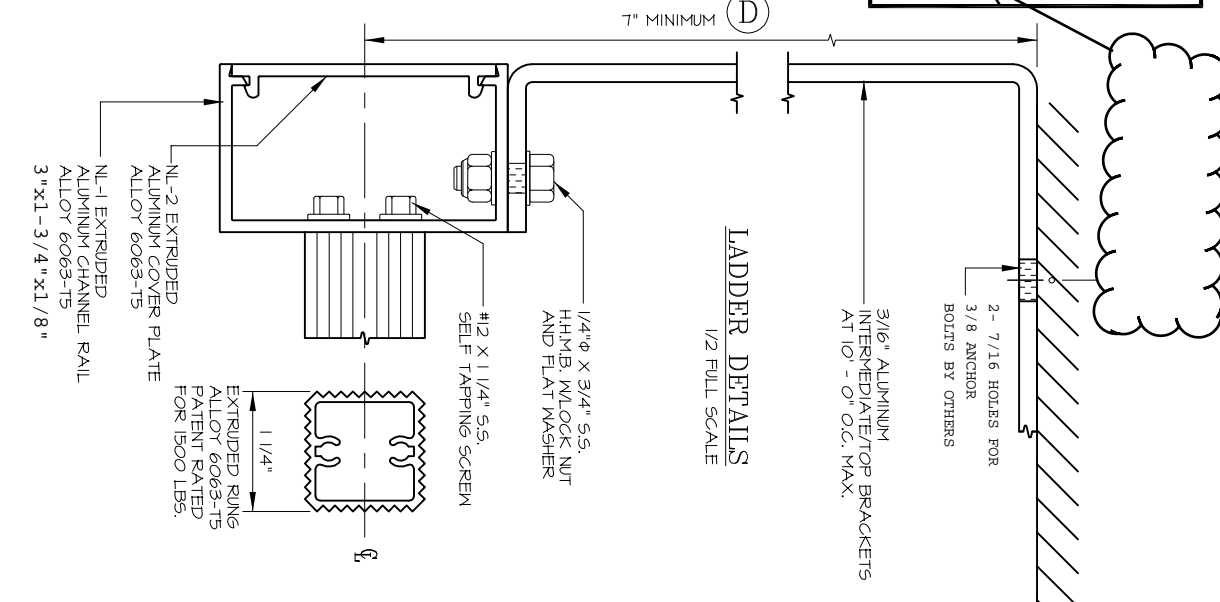
(B) _____ F.F. TO TOP OF PARAPET

(C) _____ LADDER WIDTH

(D) _____ WALL TO ϕ OF LADDER

APPROVED BY: _____

DATE: _____



O'KEEFE'S, INC.
 100 N HILL DR, STE 12
 BRISBANE, CA 94005
 TEL: (888) 653-3333
 FAX: (888) 653-4444
 www.okeefes.com

HEAVY DUTY TUBULAR RAIL ALUMINUM LADDER
 LOW PARAPET ACCESS W/ROOF OVER RAIL EXTENSIONS MODEL 502

- QUANTITY _____
- SECURITY DOOR
- ALTERNATE BOTTOM SUPPORT
- INTERMEDIATE BRACKET
- MILL FINISH
- POWDER COATING
- BRONZE ANODIZED
- CLEAR ANODIZED

SALE NO.

DRAWN : _____

DATE : _____

SHEET : _____ OF _____