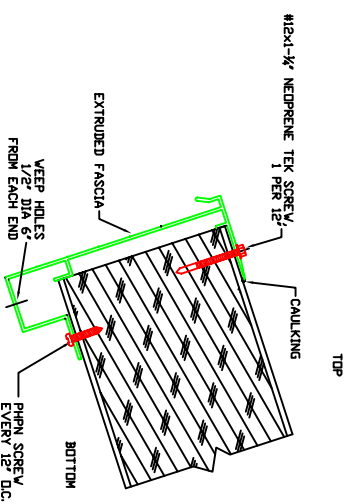
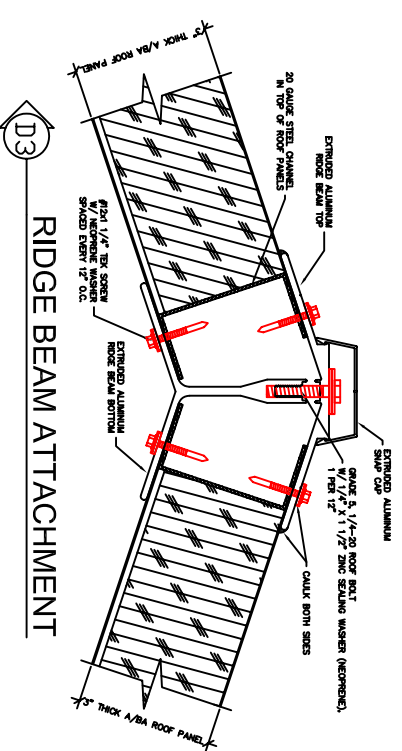


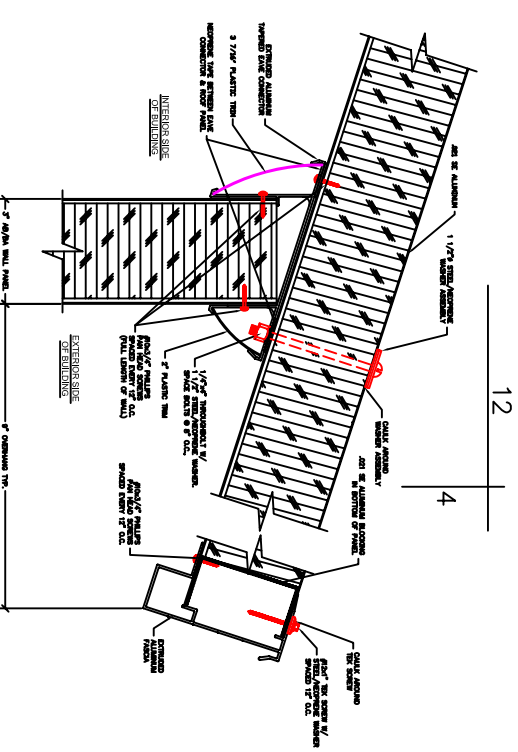
D1 CORNER POST ATTACHMENT



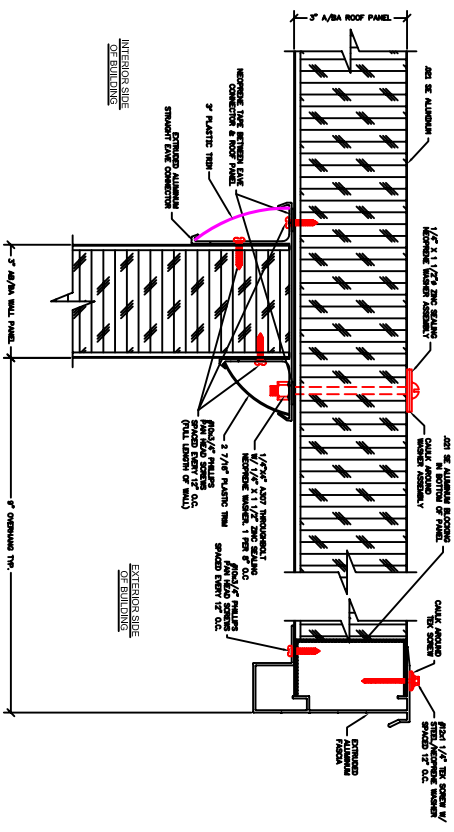
D2 FASCIA ATTACHMENT



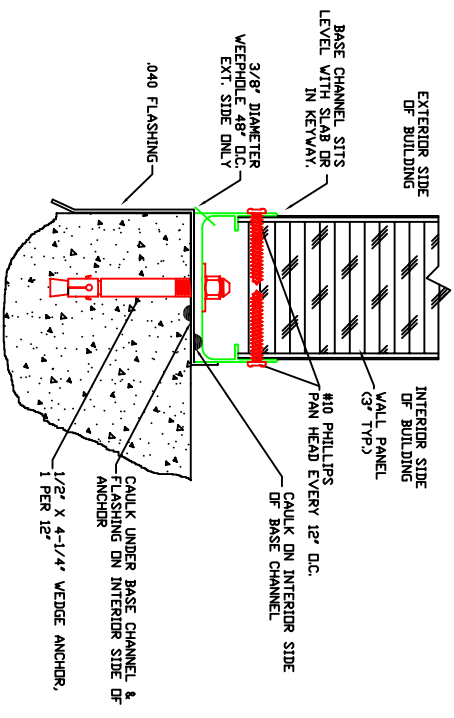
D3 RIDGE BEAM ATTACHMENT



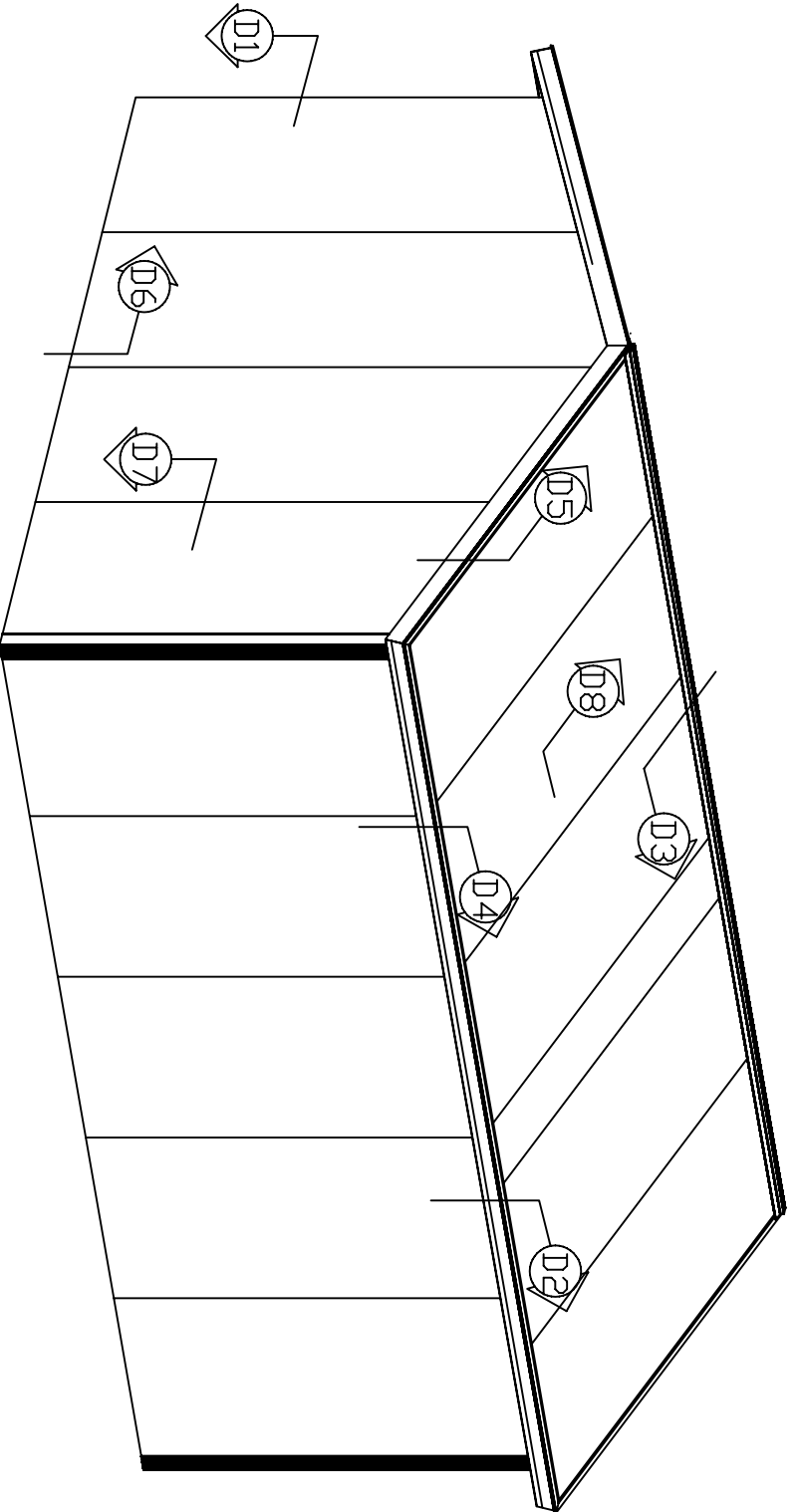
D4 TAPERED EAVE CONNECTOR & FASCIA ATTACHMENT



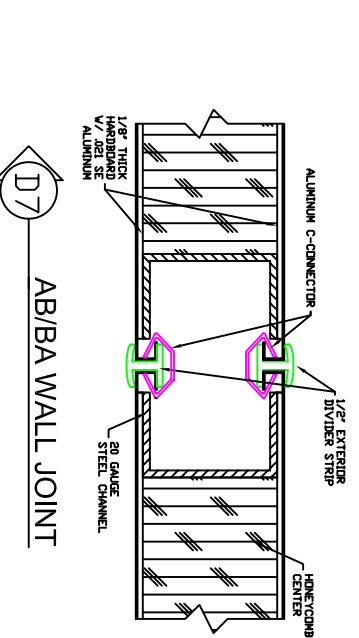
D5 STRAIGHT EAVE CONNECTOR & FASCIA ATTACHMENT



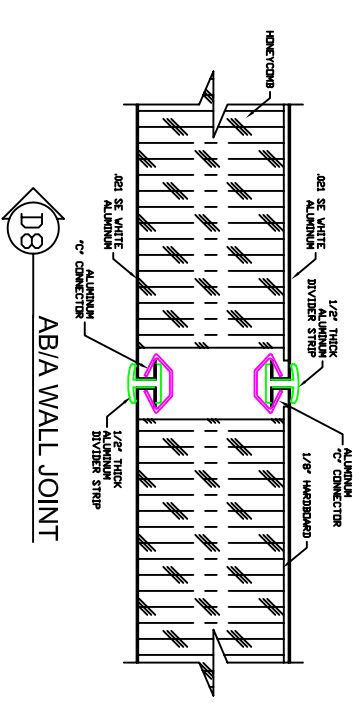
D6 EXTERIOR BASE CHANNEL TO CONCRETE ATTACHMENT



1. SEE INSTALLATION INSTRUCTIONS FOR ASSEMBLY PROCEDURES
2. ROOF THICKNESS VARIES WITH SPAN AND LOADING REQUIREMENTS.
3. MAKE SURE ROOF PANELS ARCH IN SAME DIRECTION.
4. ROOF PITCH IS 4"/12"



D7 AB/BA WALL JOINT



D8 ABA/WALL JOINT

WALL AND ROOF PANELS SHOWN HERE ARE FOR CONCEPTUAL PURPOSES ONLY. CONSULT YOUR SPECIFIC JOB DRAWINGS FOR DETAILS ON YOUR JOB.

C:\P\BUILT\BUILDINGDETAILS\EXT.DETAILS

Date: 07/23/98

THIS DRAWING IS THE PROPERTY OF PANEL-BUILT, INC. AND MAY NOT BE USED WITHOUT EXPRESS WRITTEN PERMISSION OF PANEL-BUILT, INC. ALL INFORMATION SHOWN ON THIS DRAWING IS THE PROPERTY OF PANEL-BUILT, INC. AND MAY NOT BE USED IN WHOLE OR PART WITHOUT SPECIFIC WRITTEN PERMISSION OF PANEL-BUILT, INC.

**PANEL-BUILT, INC.**  
Gable Roof Exterior Building Details

Phone: 706-745-6540  
FAX: 706-745-1450  
Designed by: M. Johnson  
Checked by: T. Breind  
Approved:  
PAGE 1 OF 1  
Revision: -