

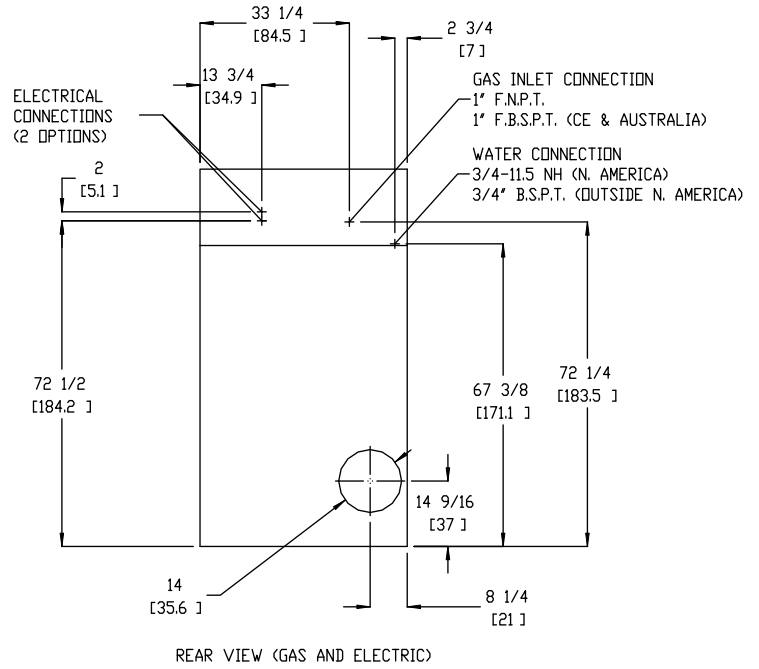
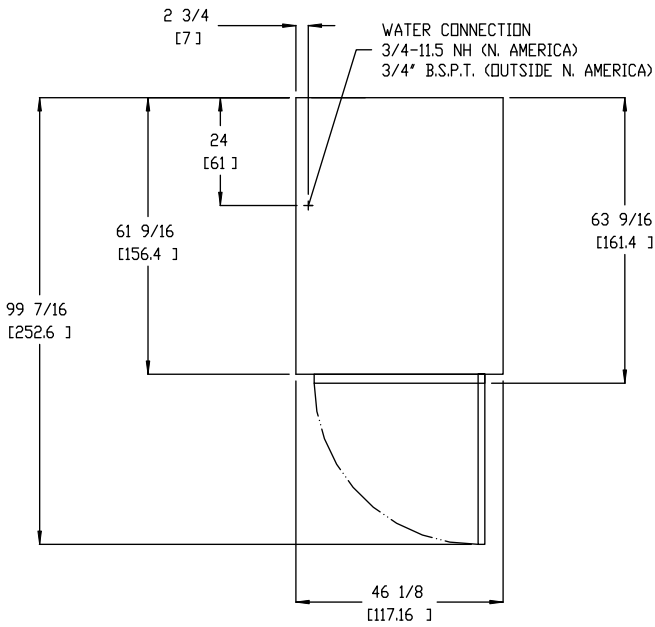
M115

DRYER NOTES:

- * OPERATING HEIGHT OF ELECTRIC DRYER IS 98 [248.9]
- * TOP SECTION CAN BE REMOVED FOR EASY INSTALLATION.
- * DUCTWORK SIZE VARIES WITH INSTALLATION CONDITIONS.
- * EXHAUST STATIC PRESSURE MUST BE NO LESS THAN 0 AND MUST NOT EXCEED 0.3" (0.74 mb) WATER COLUMN.
- * EXHAUST THIMBLE (14" (35.56 cm)) IS SHIPPED INSIDE DRYER.

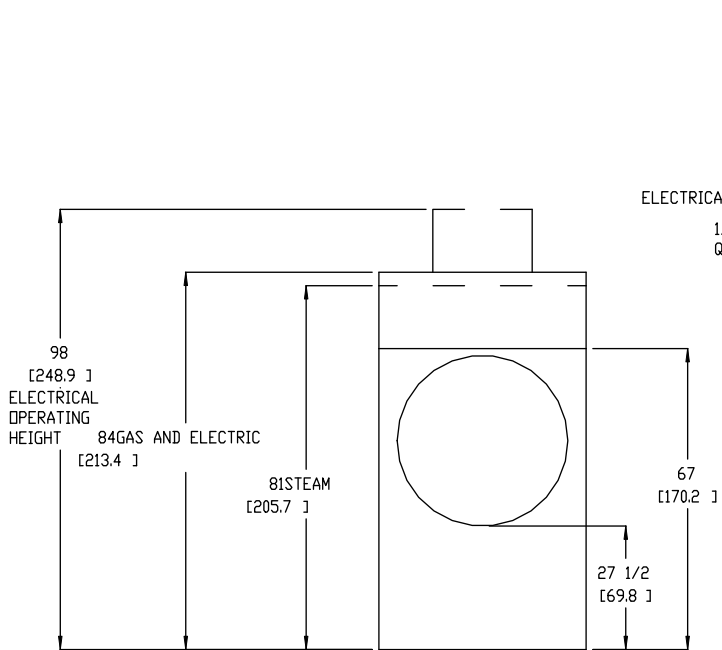
STEAM DRYER NOTES:

- * SIZE OF PIPING TO DRYER VARIES WITH INSTALLATION CONDITIONS. CONTACT FACTORY FOR ASSISTANCE.
- * STEAM DRYERS MUST BE PROVIDED WITH CLEAN, DRY, REGULATED 80 PSI ± 10 PSI (5.5 BAR ± 0.69 BAR) AIR SUPPLY.

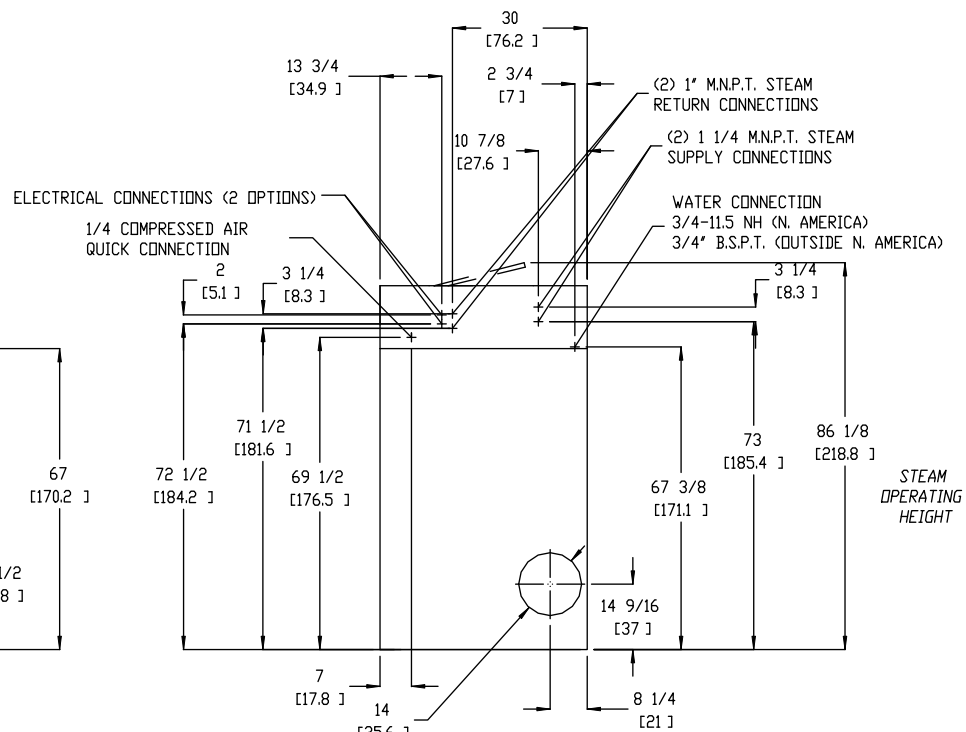


PLAN VIEW

REAR VIEW (GAS AND ELECTRIC)



FRONT VIEW



REAR VIEW (STEAM)

STEAM OPERATING HEIGHT