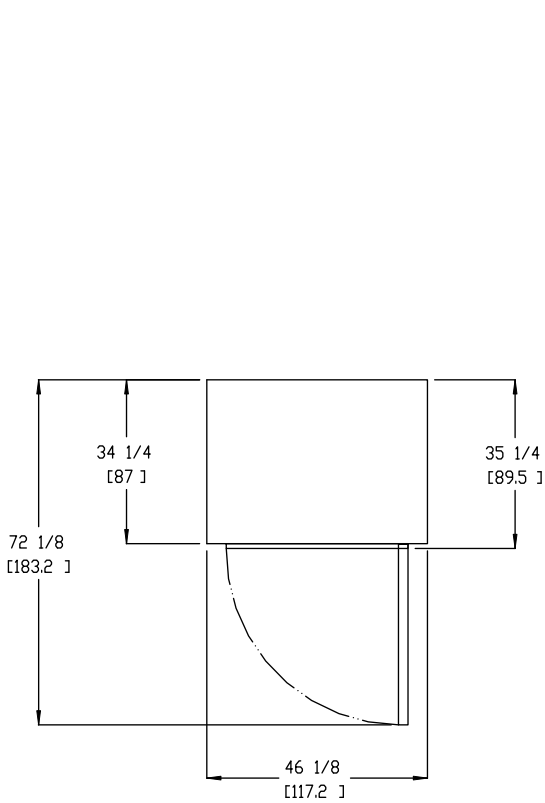


ML-96

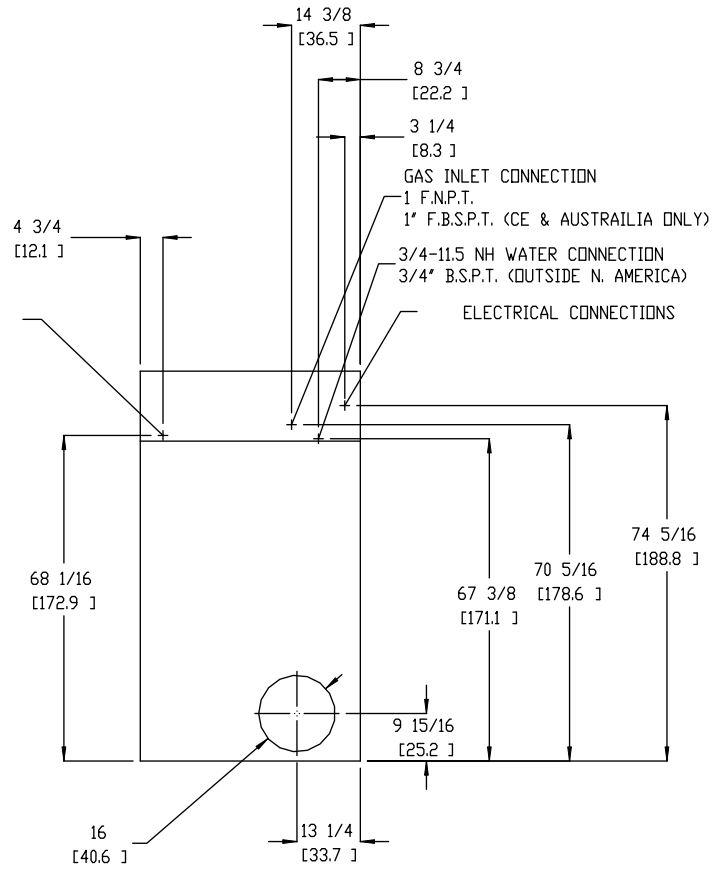
DRYER NOTES:

- * A MINIMUM OF 1 in PIPE MUST BE SUPPLIED TO THE GAS INLET FOR EACH DRYER. SIZE OF PIPING TO DRYER VARIES WITH INSTALLATION CONDITIONS.
- * TOP SECTION CAN BE REMOVED FOR EASY INSTALLATION. WITH TOP MODULE REMOVED THE HEIGHT OF THE CABINET IS REDUCED TO 67 1/4 in. (170.8 cm).
- * DUCTWORK FOR HORIZONTAL VENTING MUST BE A MINIMUM OF 16 in (40.6 cm) DIA.
- * EXHAUST STATIC PRESSURE MUST BE NO LESS THAN 0 AND MUST NOT EXCEED 0.3" (0.74 MB) WATER COLUMN.

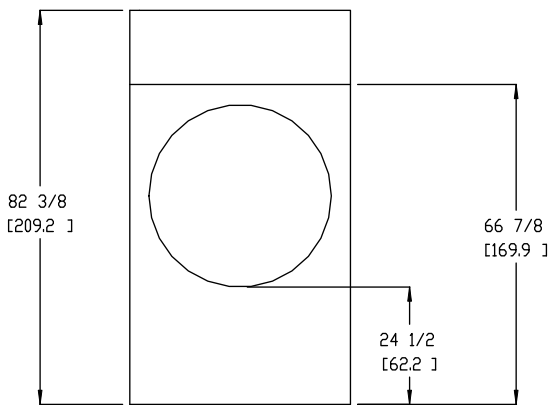


PLAN VIEW

1/4" COMPRESSED AIR QUICK CONNECTION



REAR VIEW



FRONT VIEW