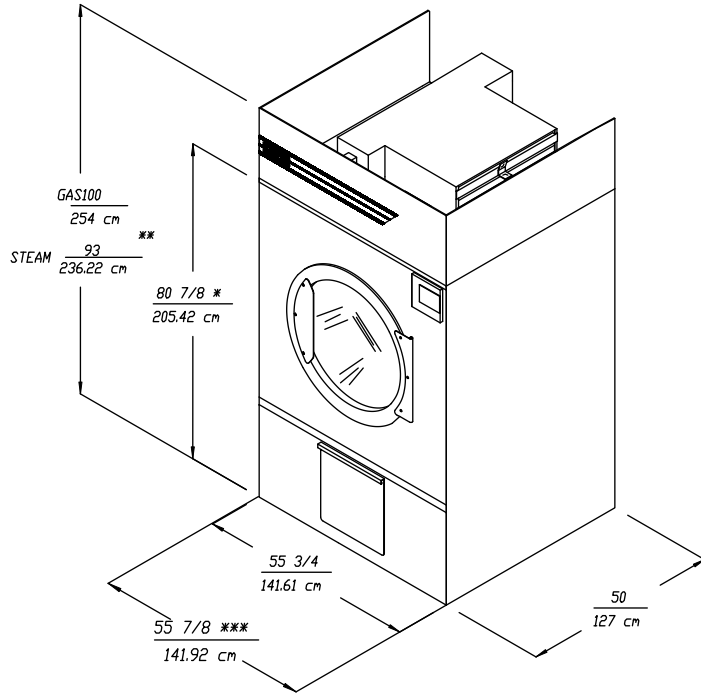
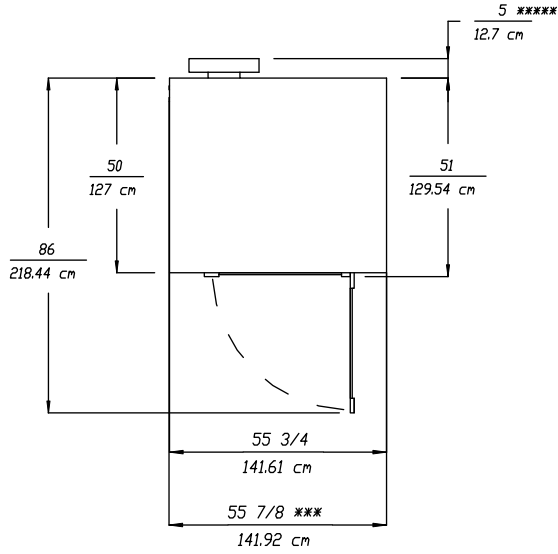
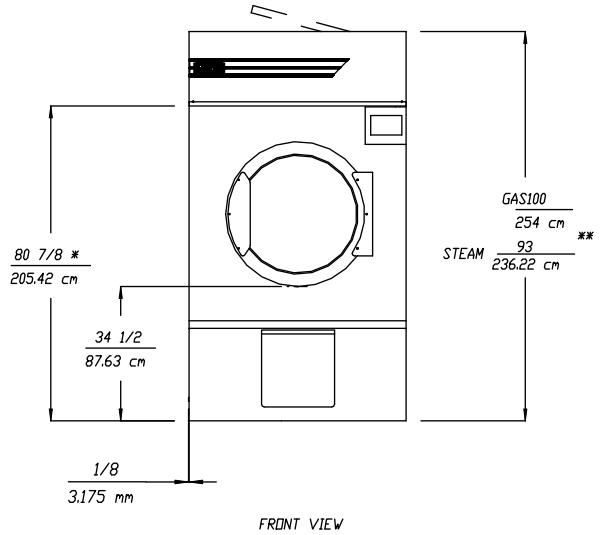
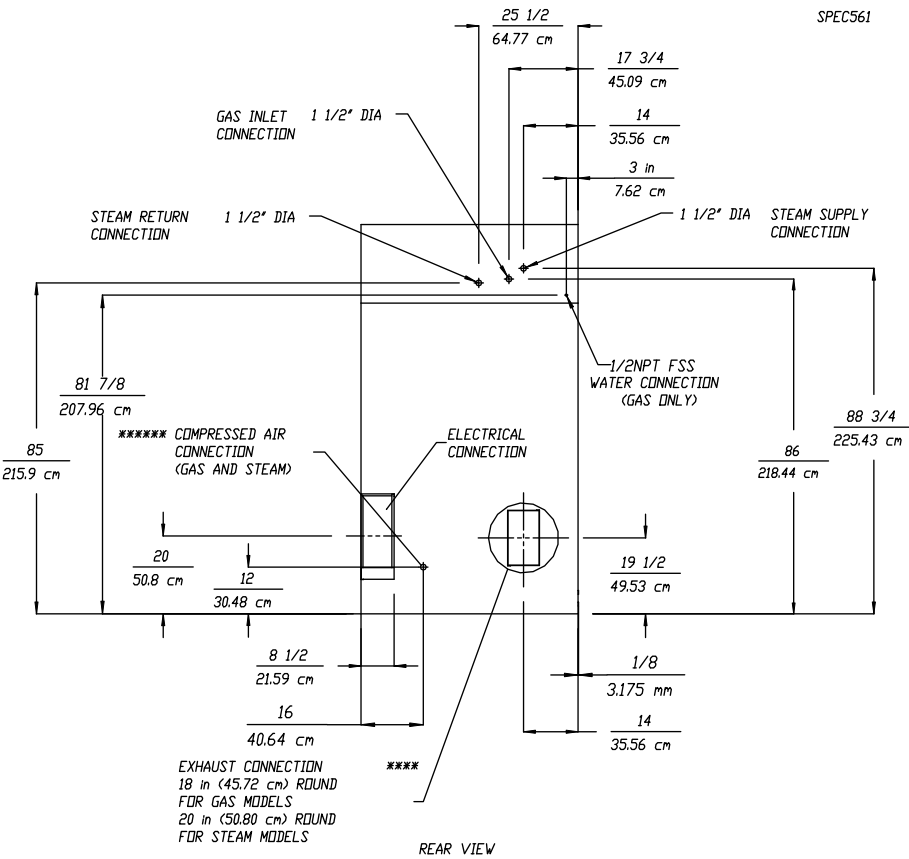


# M175



SPEC561

- \* TOP SECTION CAN BE REMOVED FOR EASY INSTALLATION.
- \*\* OPERATING HEIGHT OF STEAM DRYER IS 101" (256.54 cm).
- \*\*\* BOLTS (4) PROTRUDING 1/8" (3.175 mm) ON LEFT SIDE OF DRYER.
- \*\*\*\* DUCTWORK MUST BE A MINIMUM OF 18" (45.72 cm) DIA FOR GAS AND 20" (50.8 cm) DIA FOR STEAM. DUCTWORK SIZE VARIES WITH INSTALLATION CONDITIONS.
- \*\*\*\*\* TRANSITION DUCT CAN BE REMOVED FOR EASY INSTALLATION.
- \*\*\*\*\* DRYER MUST BE PROVIDED WITH CLEAN, DRY, REGULATED 80 PSI ± 10 PSI (5.5 BAR ± .69 BAR) AIR SUPPLY.



FRONT VIEW