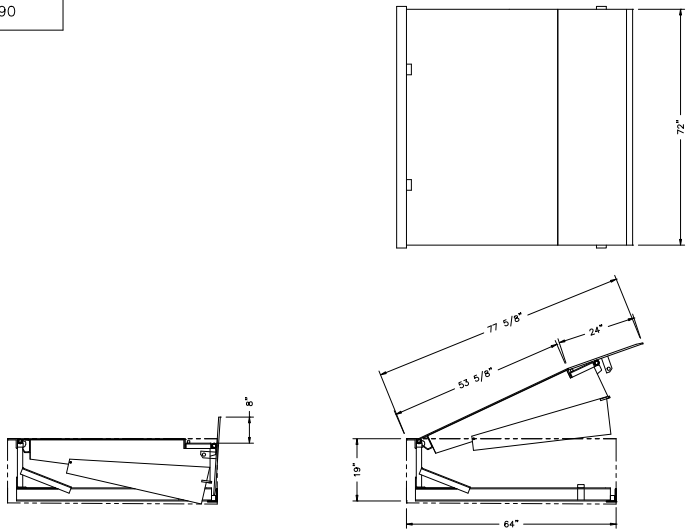



DRAWING NO. 260-6190



NOTE: Refer to appropriate pit construction drawing (available from your Pentallift representative), for dimensions and information relative to pit construction and conduit routing requirements.

		PENTALIFT EQUIPMENT CORPORATION MATERIALS HANDLING EQUIPMENT	
NOTICE: THIS DRAWING IN DESIGN AND DETAIL IS THE PROPERTY OF PENTALIFT EQUIPMENT CORPORATION AND IS LOANED SUBJECT TO RETURN ON DEMAND AND UNDER THE EXPRESS CONDITION THAT IT MUST NOT BE COPIED OR USED EXCEPT BY PERMISSION OF PENTALIFT EQUIPMENT CORPORATION.			DRAWN BY
			DATE
TITLE 6 FT x 6 FT DOCK LEVELER 25,000 TO 60,000 LBS CAPACITY		FOR SERIES HDRS, HURS	
SCALE	LOT QTY	DECIMAL TOLERANCES ± 0.25 (EXCEPT AS NOTED)	FRACTION TOLERANCES ± 1/4 (EXCEPT AS NOTED)
			DRAWING NO. 260-6190
			REV