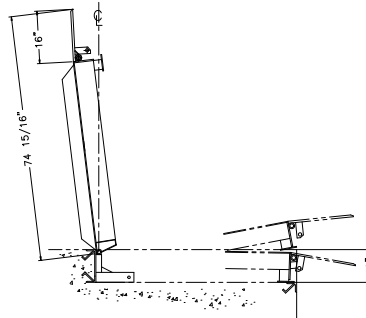
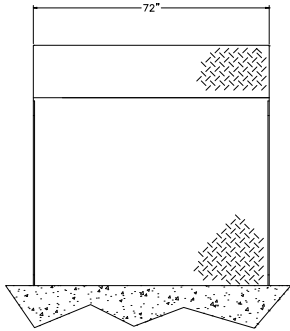



DRAWING NO. 260-6193



**NOTE:** Refer to appropriate pit construction drawing (available from your Pentlift representative), for dimensions and information relative to pit construction and conduit routing requirements.

		PENTALIFT EQUIPMENT CORPORATION MATERIALS HANDLING EQUIPMENT	
NOTICE: THIS DRAWING IN DESIGN AND DETAIL IS THE PROPERTY OF PENTALIFT EQUIPMENT CORPORATION AND IS LOANED SUBJECT TO RETURN ON DEMAND AND UNDER THE EXPRESS CONDITION THAT IT MUST NOT BE COPIED OR USED EXCEPT BY PERMISSION OF PENTALIFT EQUIPMENT CORPORATION.			DRAWN BY
TITLE: 6FTx6FT VERTICAL STORING DOCK			DATE
			FOR: SERIES HDV: 25K -50K HLV: 30K-45K
SCALE	LOT QTY	DECIMAL TOLERANCES ± 0.25 (EXCEPT AS NOTED)	FRACTION TOLERANCES ± 1/4 (EXCEPT AS NOTED)
			DRAWING NO. 260-6193
			REV